

Family

Colby looks back, ahead to New Year

At the beginning of a new year, we often reflect on the memories of the past 12 months. The past year has been pretty good for Colby.

It was a worrisome year, with high gasoline prices, travel numbers down on the highways and at state Visitor Centers. The good news is that occupancy rates and dollars spent for lodging were up in Colby and the folks that we saw at the Colby Visitor Center appreciated the hospitality and were quite friendly.

We did a complete refacing of our billboards, including two signs in honor of our international opera star, Sam Ramey. Sam has been good for Colby in his interviews — he never misses a chance to mention that Colby is his hometown — and now it is our turn to thank him.

The Bluegrass Festival was a huge success but the All-Kansas Air Tour was a nonevent due to the weather. All in all, it was a very satisfying year and now we move on to 2009.

January is always a very busy year in sports. The Colby Community College Wrestling Tournament of Champions will open at 10 a.m. Saturday at the Community Building.

The popular Paul Wintz/Tom Bowen Orange and Black Basketball Classic will be held Thursday to Saturday, Jan. 22 to 24. This tournament, put on by Colby High School, is recognized throughout the area. Games will begin at 3 p.m. Thursday and Friday and at noon on Saturday.

Saturday's festivities begin with a motivational speaker sponsored by Fellowship of Christian Athletes at 9 a.m. at the Community Building. That will be followed by the Supershot contest at 10 a.m. Game will be at both the High



Leilani Thomas

• On the Road Again!

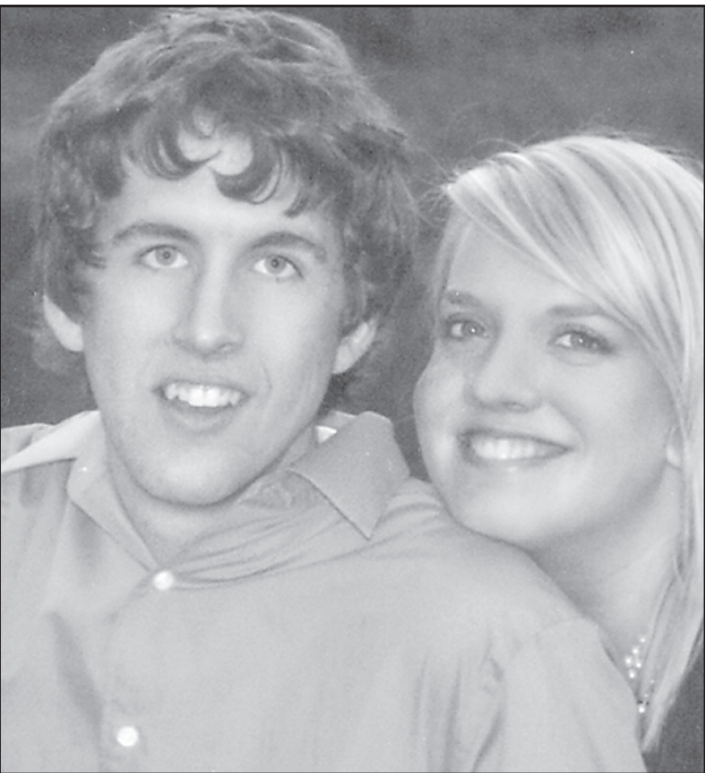
School and Community Building. Pheasants Forever will hold its annual banquet and auction tonight at the City Limits Convention Center.

I will be attending the Kansas City Sportsmen and Travel Show next Wednesday through Jan. 11 with members of Northwest Kansas Travel Council. Other members will also be working a travel show in Denver Jan. 21-25. These shows are a great opportunity to talk with sportsmen about coming to northwest Kansas to hunt and fish — and to bring their families to see the attractions. We really enjoy sharing the Colby story.

We are approaching the time when selection will begin for the 2009 Youth Leadership Program for sophomores. Applications will soon be available through the principal of each Thomas County high school. Classes will be twice a month February and continue through March. We hope these students will carry the skills they learn with them for a lifetime and be role models for their classmates.

The first quarterly calendar of events for 2009 is out. They are available at motels, banks, the city office, courthouse, library, the Colby Free Press and the Chamber office. We try to keep this as up to date as possible so that you know what is happening in your community.

Best wishes to all of you in 2009. Like you, we are looking forward to new challenges and opportunities in the coming year.



Brian Seemann and Wendy Ens

Couple to marry in Oklahoma Saturday

Brian Seemann and Wendy Ens of Corn, Okla., plan to be married on Saturday, Jan. 3, 2009, at the Corn Mennonite Brethren Church.

Brian is the son of Mr. and Mrs. Gary Seemann of Great Bend and Mr. and Mrs. Shorty Kulhanek of Colby. He is a grandson of Rosalie Seemann, Levant, and Gene and Helen

Normadin, Damar. He graduated from Corn Bible Academy in 2006 works for Jet Specialty Inc. of Eakly, Okla.

Wendy is the daughter of Mark and Connie Ens of Corn. She graduated from Duncan Brothers School of Hair Design and works at the Cottage in Weatherford, Okla.

Museum plans lunch programs

Mark your calendars for Thursdays, Jan. 15, Feb. 19, and March 19, and plan to attend the Prairie Museum's Food for Thought programs.

A light soup lunch will be provided, along with an informative, historical-themed program. A different presentation will be offered each month, with presenters

including Mike Baughn, Evelyn Hoyt-Ward, Doris Johnson and Ray Imhof.

These third-Thursday programs will run from noon to 1 p.m. Call the museum at (785) 460-4590 for details.

Markets

Quotes as of close of previous business day Hi-Plains Co-op	
Wheat (bushel)	\$5.35
Corn (bushel)	\$3.53
Milo (hundredweight)	\$5.14
Soybeans (bushel)	\$8.28

Deaths

Glen C. Carpenter

Glen C. Carpenter, 88, a retired Levant area farmer, died Sunday, Dec. 28, 2008, at the Prairie Senior Living Complex in Colby.

He was born in Thomas County on March 5, 1920. He was a farmer, horseman and cattleman for many years before retirement.

Mr. Carpenter was preceded in death by his wife Leola on July 2, 1985.

He is survived by three sons, Bob Carpenter, Phoenix; Bill Carpenter, Greeley, Colo.; and Randy (Lynn) Carpenter, Colby; three

grandchildren; and two great-grandchildren.

Services will be at 10:30 a.m. on Friday, Jan. 2, 2009, at the Kersenbrock Funeral Chapel in Colby, with burial in the Beulah Cemetery. Visitation will be from 2 to 8 p.m. Thursday at the funeral home.

The family suggests contributions to the Prairie Museum of Art and History, in care of the funeral home at 745 S. Country Club Dr., Colby, Kan., 67701.

Ag session planned for women

HUTCHINSON — “The Changing Face of Agriculture” is the theme for the 2009 Ag Conference for Women Feb. 12-14 at the Grand Prairie Hotel and Convention Center in Hutchinson.

The conference is for women who have chosen farm and ranch life and agribusiness as a career, said Kristy Archuleta, conference coordinator and a Kansas State University assistant professor in financial planning.

The two-day conference will include four keynote speakers who explore networking and its value in business, family and farm man-

agement, and tips for improving communications.

Twenty-five breakout sessions will follow up on key topics and offer ideas on ag basics, as well as enhancing agribusiness careers and personal life, Archuleta said.

The cost to attend is \$90, which covers all sessions, materials, two lunches and one breakfast.

More information about the Women Managing the Farm organization is available at www.womenmanagingthefarm.info. Registration information is available at (800) FARMKSU (327-6578) or e-mailing wmf@ksu.edu.

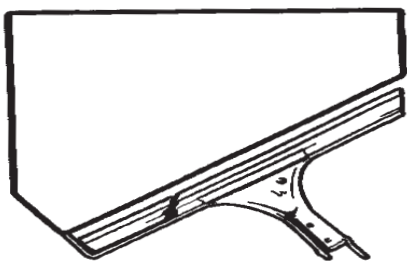
Corrections

The Colby Free Press wants to maintain an accurate record of our town. Please report any error or lack of clarity in a news story to us at 462-3963.

About Town

Butch Herbel recently attended the graduation of his son Alex from the University of Missouri, Columbia. He was accompanied by his mother, Jeannie Herbel.

Alex completed a tour of duty in Iraq before graduation on Dec. 19. He will be workings for the Mortgage Research Co. in Columbia.



NEW SYSTEM Professional WINDOW CLEANING

Colby, KS (800) 611-6735

COMMERCIAL - RESIDENTIAL - FREE ESTIMATES

FAMILY DENTAL CARE



The Latest Technology and Most Complete Care Available!

- Root Canals • Orthodontics
- Implants • Wisdom Tooth Surgery

New Patients Welcome

No Referral Necessary ~ Financing Avail.

1690 W. 4th St., Colby ~ 785-460-3999

Toll Free: 1-866-305-3999



SHAWN D. JENSEN, D.D.S.

ROOFMASTERS

Your Local Roofing Contractor

425 East Hill, Colby, KS

Licensed - Bonded - Insured

RESIDENTIAL

Tamko Shingles
GAF Shingles
Wood Shingles
Metal Roofs

1-800-536-6642

1-785-462-6642

FREE ESTIMATES

Elastomeric Rubber Coating For Metal Roofs

COMMERCIAL

Rubber Single Ply
White TPO Single Ply
Built Up Systems
Modified Systems

Strength. Stability. Service.

And us.



David L. Browne III
550 N Franklin Ave
Colby



Adriane Sims
550 N Franklin Ave
Colby



FARM BUREAU FINANCIAL SERVICES

Insurance • Investments

www.fbfs.com

(785) 462-3388

Auto / Home / Life / Business / College / Retirement

Farm Bureau Life Insurance Company*West Des Moines, IA. Farm Bureau Mutual Insurance Company*West Des Moines, IA. *Company of Farm Bureau Financial Services © 2007 FBL Financial Group, Inc. 346

Murray Roofing & Construction

Residential & Commercial
(785) 462-6908

Residential roofs
Flat & Low-Sloped Roofs
Metal Retro-Fit
Energy Efficient Roofing Solutions

Vinyl & Steel Siding
Decks & Patios
Wood & Vinyl Fencing
Soffit & Fascia

FREE ESTIMATES



FREE ESTIMATES

Jim Murray - Owner
(785) 443-1339

Introducing...

QTA Quality Title & Abstract

785-460-1858 * 275 La Casa Drive * Colby, KS

Partners of:

Western Appraisal Service

Owner and Operator-Paul F. Bailey

785-460-2839 * 275 La Casa Drive * Colby, KS

Call on us for your Appraisal and Title needs.

“Where one call...Does it all!”

Modern Woodmen
FRATERNAL FINANCIAL



Touching lives. Securing futures.®

Plan your financial future

Life insurance for the unexpected. Financial products to help you reach your goals. Your Modern Woodmen representative can help you choose the right products for you.

Modern Woodmen of America offers financial products and fraternal benefits. Call today to learn more.

modern-woodmen.org



Shawn Carney
1210 West 4th
Colby, KS
785-460-6921
shawn.carney@mwarep.org

Don't miss out on this GREAT RATE.

For a limited time only, State Farm Bank® is offering the following promotional term CD rate. Call me today for more information.

CERTIFICATE OF DEPOSIT

9 Months

3.17% APY*



Jane W. Johnson
State Farm Agent
Colby, KS 67701
Bus: 785-462-7525
jane.johnson.gh21@statefarm.com



Bank



ENDER

*Annual Percentage Yields as of 12/10/08. Rates subject to change without notice. Minimum balance to open an account and obtain the stated APY is \$500. Fees and charges may reduce earnings on your account. A penalty may be imposed for a withdrawal prior to maturity. Certificates automatically renew at maturity at the then current rate for the next longer standard rate. Some products and services not available in all areas.

statefarm.com