

Training tomorrow's city builders



Corbin Stephens admired Mark Ostmeyer's city-state project, while Ostmeyer carefully examined his work during a seminar class at Colby High School on Friday afternoon. See story, another photo on Page 1.

Some reflections a safety hazard

MANHATTAN — Anyone walking, working or driving in ice or snow has experienced it — blinding sunlight reflecting off of the frozen water.

What people may not realize, however, is that it's different enough from other types of reflections to be a real safety factor.

"The term 'albedo' is used to describe the amount of visible light reflected by a surface, as a percentage of the total visible light that's being cast on the surface," said State of Kansas Climatologist Mary Knapp. "The higher the number, the greater the amount of light being reflected."

This can vary widely, of course, depending on the conditions and the particular surface, said Knapp, who heads the Kansas Weather Data Library, based at Kansas State University.

Some approximate albedo values include wet sand at 9 percent; green forest at 3 to 10 percent, and bare ground at 10 to 20 percent. In contrast, the albedo of fresh snow is typically 80 to 85 percent.

"That is enough to make anyone want — and need — to reach for their shades," Knapp said.

Information about Kansas weather is available on the Web: <http://www.oznet.ksu.edu/wdl/>. "Weather Wonders" audio reports are also available on the site at <http://www.oznet.ksu.edu/radio/>.

School lunch menus

COLBY
Monday: Breakfast, sausage and cheese breakfast pizza, orange juice; Lunch, ham sandwich, crispy potatoes, green beans
Tuesday: Breakfast, pancakes, maple syrup, applesauce; Lunch, pizza, garlic bread, corn
BREWSTER
Monday: Breakfast, French toast & sausage or cereal, toast,

juice and milk.
Lunch: Sausage pizza, corn, 7-layer salad, baby carrots, applesauce, peaches, rolls, salad bar and milk.
Tuesday: Breakfast: Scrambled eggs and bacon or cereal, toast, juice and milk.
Lunch: Grilled cheese sandwich, veggie sticks, fruit.

Senior Center

Colby's Senior Progress Center will be hosting a Christmas Brunch Wednesday at 11 a.m. Activities this week include:
Monday: Sweets Day
Tuesday: 10 a.m. Exercise; 11 a.m. dart game
Wednesday: 11 a.m. Christmas Brunch, center closes and bus stops at noon.
Thursday: Center closed, no meals, no transportation.
Friday: Center closed, no meals, no transportation.
Menus for the week:
Monday: tuna noodle casserole, stewed tomatoes, cook's choice fruit, bread, pudding.
Tuesday: ham, sweet potatoes, cranberry apple salad, roll, cake.
Wednesday: sausage patties,

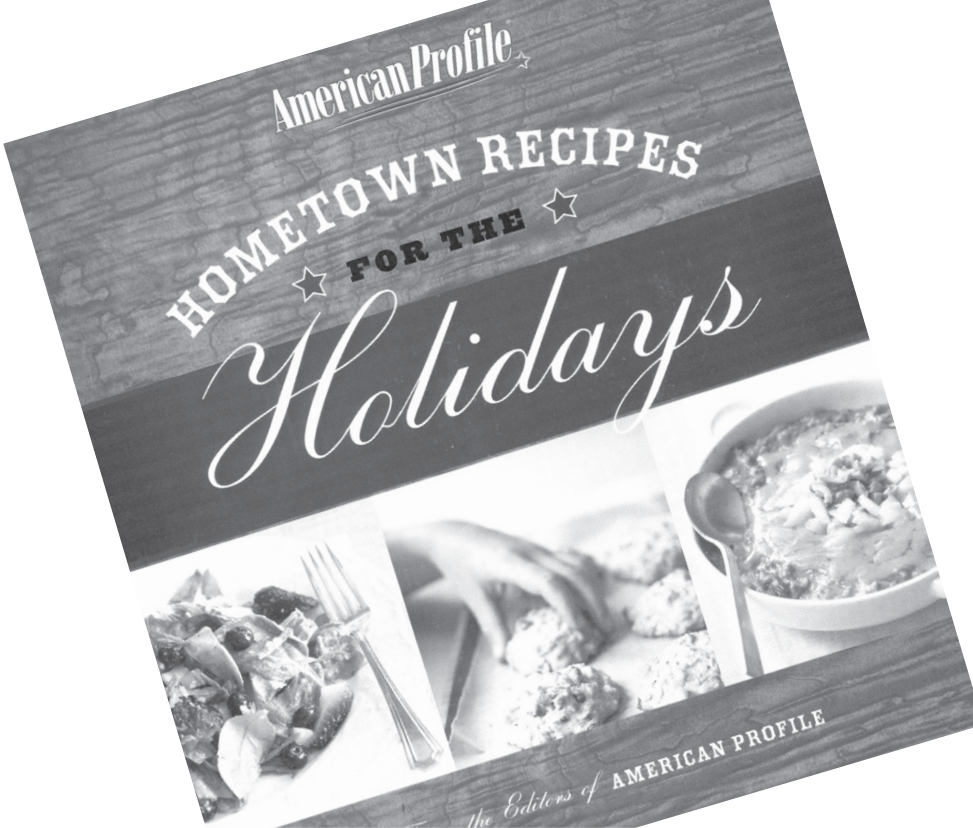
mashed potatoes and gravy, green beans, biscuit, peaches.
The Thomas County Nutrition Center in Colby wishes to invite those 60 and older and their guests to attend daily luncheons in Colby, Monday through Friday. reservations may be made by calling 785-460-2901 the day before by noon.
Home delivery is also available for those unable to attend due to

social or physical disabilities. We also invite those working who would like to pick up a meal to order by noon the day before. Those meals are available at 12 noon to be picked up. For individuals 60 and over, a contribution of \$2.75 per meal is requested. We also invite those under 60 years of age to attend, or pick up meals, at a cost of \$5 per meal. Persons under 60 receiving home delivery is \$5.75.

Soup to benefit Red Cross

Colby High School cheerleaders are asking everyone to mark their calendar for Saturday, Feb. 8, when they plan a soup-and-chili feed from noon to 2 p.m. at the

United Methodist Church. Donations will be accepted for the Thomas County Branch of the American Red Cross.



Give the gift of good taste ...and smell, fun and good memories

American Profile — yep, the magazine that comes in the local paper and always has a great recipe — now has

a great cookbook. Get 120 recipes categorized by holiday for yourself or as a gift. Just \$18.95 plus tax. Available at:



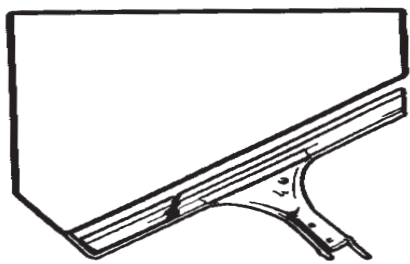
COLBY FREE PRESS

155 W. 5th, Colby

785-462-3963

BUSINESS DIRECTORY

To have your ad placed in the Business Directory call Jasmine or Heather today at 462-3963.



NEW SYSTEM Professional WINDOW CLEANING

Colby, KS (800) 611-6735
COMMERCIAL - RESIDENTIAL - FREE ESTIMATES

FAMILY DENTAL CARE

The Latest Technology and Most Complete Care Available!

- Root Canals • Orthodontics
- Implants • Wisdom Tooth Surgery

New Patients Welcome
No Referral Necessary ~ Financing Avail.
1690 W. 4th St., Colby ~ 785-460-3999
Toll Free: 1-866-305-3999



SHAWN D. JENSEN, D.D.S.

ROOFMASTERS

Your Local Roofing Contractor
425 East Hill, Colby, KS
Licensed - Bonded - Insured

RESIDENTIAL Tamko Shingles GAF Shingles Wood Shingles Metal Roofs	1-800-536-6642 1-785-462-6642	COMMERCIAL Rubber Single Ply White TPO Single Ply Built Up Systems Modified Systems
--	----------------------------------	--

FREE ESTIMATES
Elastomeric Rubber Coating For Metal Roofs

Strength. Stability. Service.

And us.



David L. Browne III
550 N Franklin Ave
Colby



Adriane Sims
550 N Franklin Ave
Colby



Insurance • Investments

www.fbfs.com

(785) 462-3388

Auto / Home / Life / Business / College / Retirement

Farm Bureau Life Insurance Company*West Des Moines, IA. Farm Bureau Mutual Insurance Company*West Des Moines, IA. *Company of Farm Bureau Financial Services © 2007 FBL Financial Group, Inc. 346

Murray Roofing & Construction

Residential & Commercial
(785) 462-6908

Residential roofs
Flat & Low-Sloped Roofs
Metal Retro-Fit
Energy Efficient Roofing Solutions

Vinyl & Steel Siding
Decks & Patios
Wood & Vinyl Fencing
Soffit & Fascia

FREE ESTIMATES



FREE ESTIMATES

Jim Murray - Owner
(785) 443-1339

Introducing...

QTA Quality Title & Abstract

785-460-1858 * 275 La Casa Drive * Colby, KS

Partners of:

Western Appraisal Service

Owner and Operator-Paul F. Bailey

785-460-2839 * 275 La Casa Drive * Colby, KS

Call on us for your Appraisal and Title needs.

"Where one call...Does it all!"

Modern Woodmen
FRATERNAL FINANCIAL

Touching lives. Securing futures.®

Plan your financial future

Life insurance for the unexpected. Financial products to help you reach your goals. Your Modern Woodmen representative can help you choose the right products for you.

Modern Woodmen of America offers financial products and fraternal benefits. Call today to learn more.

modern-woodmen.org



Shawn Carney
1210 West 4th
Colby, KS
785-460-6921
shawn.carney@mwarep.org

Don't miss out on this GREAT RATE.

For a limited time only, State Farm Bank® is offering the following promotional term CD rate. Call me today for more information.

CERTIFICATE OF DEPOSIT

9 Months

3.17% APY*



Jane W. Johnson
State Farm Agent
Colby, KS 67701
Bus: 785-462-7525
jane.johnson.gh21@statefarm.com



Bank



*Annual Percentage Yields as of 12/10/08. Rates subject to change without notice. Minimum balance to open an account and obtain the stated APY is \$500. Fees and charges may reduce earnings on your account. A penalty may be imposed for a withdrawal prior to maturity. Certificates automatically renew at maturity at the then current rate for the next longer standard rate. Some products and services not available in all areas.

statefarm.com