

## Pets /Supplies

**Free chocolate** lab mix. Please call 785-443-3114.  
-----2/6---2/11-----

**Basset puppies**, \$300, tri-color. Ready 3/20. Siberian Husky puppies, \$350, blue eyes. Black, red, grey. Ready 3/3 & 18. Cash deposit required. 785-425-6430, dkd farms@ruraltel.net  
-----2/4---3/14-----

## To Give Away

**6 year old** registered out Westie. Neutered male. Call 785-460-3960.  
-----1/31---2/6-----



## NOTICE TO THOMAS COUNTY TAXPAYERS

It is your responsibility to file your Personal Property Assessment with the County Appraiser's Office each year. Reportable items include: Farm Trucks, Trailers, Mopeds, Dirt Bikes, ATV's, Camping Trailers, Boats, Airplains, Mobile Homes, Golf Carts, Jet Skis, Snowmobiles, and Business Equipment & Fixtures. Real Estate improvements or structural changes to buildings must also be reported. The filing deadline is the same for Individuals, Businesses, and Corporations. Due date is on or before March 15, 2008. The deadline will be observed and penalties imposed as directed by law. We don't like imposing penalties any more than you like paying them. PLEASE FILE EARLY. If you previously had property to declare, the forms were mailed in January. Otherwise, assistance will be provided at the Appraiser's Office in the basement of the Courthouse in Colby from 8 a.m. to 5 p.m. Monday through Friday.

## Public Notice

## LEGAL NOTICE OF ANNUAL MEETING OF THE THOMAS COUNTY CONSERVATION DISTRICT

To all qualified electors residing within the boundaries of the Thomas County Conservation District notice is hereby given that pursuant to K.S.A. 2-1907, as amended on the 11<sup>th</sup> day of February at 6:30 p.m., an annual meeting of the Thomas County Conservation District will be held Colby United Methodist Church, Colby, Kansas.

The meeting agenda shall include the following business items:

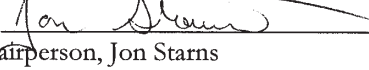
## ONE:


The supervisors of the Thomas County Conservation District shall make full and due report activities and financial affairs since the last annual meeting.

## TWO:

They shall conduct an election by secret ballot of qualified electors, there present, of two sup to serve for a term of three years from the date of said meeting. The terms of Jon Starns and Kern are expiring.

All in the county of Thomas in the State of Kansas.

By   
Chairperson, Jon Starns  
Thomas County Conservation District

Attest   
District Manager, Danielle Freeman

(Published in the Colby Free Press February 1, ans 8, 2009.)

**Ron Paul Shares Kansas Values!**

- Christian Pro-Life Advocate** - has delivered over 4,000 babies; endorsed by "Jane Roe" of Roe v. Wade
- Economic conservative** - the only Republican to propose decreasing the size of government
- Advocates **defending our borders** and stopping terrorists from entering our country

- Support Ron Paul in your local Republican Caucus Saturday, February 9 -  
Find out how at [www.RonPaul2008.com](http://www.RonPaul2008.com) or call 913-963-6858  
Paid for by Stephen Shute, Ron Paul Presidential Campaign Committee [www.RonPaul2008.com](http://www.RonPaul2008.com)

**Get Caught Recycling!**  
[www.getcaughtrecycling.org](http://www.getcaughtrecycling.org)

# 720 ACRES THOMAS CO, KS CROPLAND LAND AUCTION

**THURSDAY, FEB. 21, 2008 @10:30 AM, CST**

**SELLER:** MYRTLE CARSON ESTATE, Security State Bank, Scott City, Executor

**AUCTION LOCATION:** CITY LIMITS CONVENTION CENTER, COLBY, KS

**MANNER OF SALE:** This real estate will be offered as a "MULTI-PARCEL" auction in 3 individual tracts and in combination of tracts.

**TERMS:** 10% down day of sale, with the balance to be paid on or before March 21, 2008. **Announcements made day of sale take precedence over printed material and previously made oral statements.**

**MINERAL RIGHTS:** All of the Seller's interest will transfer to the Buyer(s) at closing. **The mineral rights are believed to be 100% intact.**

**CROPS AND CROP INSURANCE:** *There are 362.3 acres of growing wheat on Tract 3 and the Buyer will receive 100% of said 2008 growing wheat crop.* There are no growing crops on Tracts 1 & 2.

There is CRC crop insurance coverage at the 70% level in effect through F&M Insurance Store, Colby, on the 2008 growing wheat crop. Buyer(s) will pay the premium and receive any benefits therefrom.

**FSA INFORMATION:** Buyer(s) will receive 100% of all FSA payments associated with the 2008 crop year.

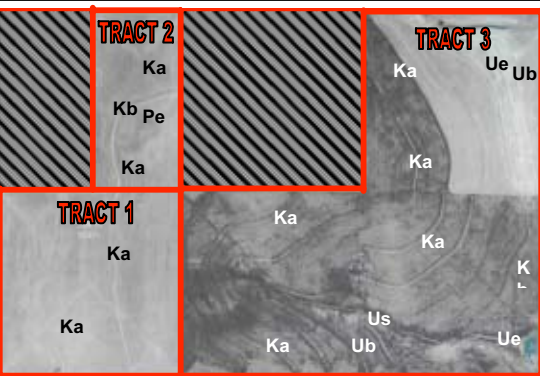
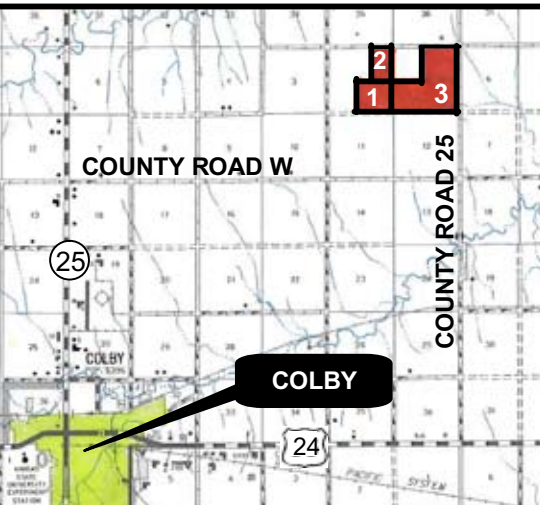
**REAL ESTATE TAXES:** Seller will pay taxes for 2007 and prior years. Taxes for 2008 will be paid by the Buyer(s).

**CLOSING:** Closing will be on or before March 21, 2008.

**POSSESSION:** Possession will be the date of closing.

**AGENCY:** Farm & Ranch Realty, Inc., its agents and representatives, are the Exclusive Agents of the Seller.

**LEGAL DESCRIPTIONS:**  
TRACT 1 - SE/4 OF 2-7-33  
TRACT 2 - E/2NE/4 OF 2-7-33  
TRACT 3 - E/2 & SW/4 OF 1-7-33



TRACTS	TOTAL ACRES	CROPLAND ACRES	WHEAT BASE/ DCP YIELD	GRAIN SORG BASE/ DCP YIELD	2007 TAXES
1	160	158.34	86.13/43	19.82/51	Taxes are combined - \$691.73
2	80	80.00	43.51/43	9.91/51	
3	480	474.98	258.36/43	60.36/51	
<b>TOTAL</b>	<b>720</b>	<b>713.32</b>			<b>\$1,339.09</b>

## FARM &amp; RANCH REALTY, INC.

RON EVANS, Listing Agent

P.O. BOX \* 1420 W. 4<sup>TH</sup>  
COLBY, KS 67701  
800-247-7863  
DONALD HAZLETT,

[www.farmandranchrealty.com](http://www.farmandranchrealty.com)

"When you list with Farm & Ranch, it's as good as SOLD!"

**AUCTIONEER'S NOTE:** The late Myrtle & Larry Carson lived in Colby and ran their operation from the quonset located on the corner of Tract 3. This land is all **contiguous**, has **good access**, is **located close to Colby**, and has **excellent crop yield and production history**. Tracts 1 and 2 are **predominantly Keith soils**. *This land has been custom farmed which allows immediate possession to the Buyer(s) and the 362.3 acres of growing wheat will go with the land as part of the sale price on Tract 3!*

We will be liquidating the farm machinery on Saturday, March 29<sup>th</sup> at our Spring Consignment Auction.

## Public Notice

## Public Notice

## Heartland Rural Counseling Services, Inc.

270 N. Franklin, Suite C • Colby, KS  
Specializing in individual, family, marital, adolescence, child therapy, diagnostic testing, adoption home studies, anger mgmt. and parenting classes.  
**785-460-7588 (Colby)**

## South Park Apartments Meadowlark Manor

- Rent based on income -  
**785-460-6763**  
EQUAL HOUSING OPPORTUNITY

## For Sale



**785 N. CHICK**



1085 Taylor Ave., Colby, KS  
Linda Taylor - Broker  
**785-460-3721**  
[www.colbysouthwindrealty.com](http://www.colbysouthwindrealty.com)

## • NOTICE •

## AD RATES

For Classified Word ads are as follows:  
1-2 days 25¢\*/word  
3-4 days 18¢/word  
5-9 days 17¢/word  
10-14 days 16¢/word  
Monthly 15¢/word

(\*Price reflects 15 word minimum ad. Ads must be in our office by 12:00 noon the day before. In case of error, call us the FIRST day your ad runs since we will not be responsible for errors after the first day/week.

## COUNTRY ADVOCATE

\$9.45 for the first 15 words & 55¢ each additional word (per week). Your ad will run 1 time in the Advocate and 1 week in the sister paper of your choice.

ADS MUST BE IN THE OFFICE BY 12:00 NOON ON FRIDAY.


DISPLAY (box) AD DEADLINE FOR FREE PRESS IS 3:00 P.M. TWO DAYS BEFORE AD RUNS.

Classified Display Rate: \$7.15 per column inch

COUNTRY ADVOCATE DEADLINE IS 12:00 NOON ON FRIDAY.

**COLBY FREE PRESS**  
**785-462-3963**

**GIVE BLOOD. SHARE LIFE!**



For more information on donating blood, please call 1-888-719-8929 or in the Wichita area, 268-0834

**American Red Cross**

**THINKING OF REFINANCING OR PURCHASING THAT NEW HOME???**

With home mortgage interest rates still low - now is the time to come check out what options we have available. You can save money by dropping your current interest rates with a refinance.

Drop by or call and see what we can do for you today!

**240 W. 4th, Colby, KS**  
**785-460-3321**  
**1-866-460-3321**

**Jacque Golemboski**  
Mortgage Loan Officer  
MEMBER FDIC

**1977 - 2007 30 YEARS OF EXPERIENCE EXPERTISE EXCELLENCE**

**FARM & RANCH REALTY, INC.**

1420 W. 4<sup>TH</sup> - P.O. BOX 947  
COLBY, KS 67701  
785-462-3904

**DONALD L. HAZLETT, Broker**

[www.farmandranchrealty.com](http://www.farmandranchrealty.com)

**WE INVITE YOU TO TALK TO ONE OF OUR REAL ESTATE PROFESSIONALS!**

Naomi Ward • Steve Hazlett • Ron Evans • Ed Currier • Neal Mann • Mike Bailey • Scotty Legere

**DON HAZLETT**

## FARM MACHINERY AUCTION

**Tues, Feb. 12, 2008 @ 10:30AM, CST**

**Sellers:** Floyd & Helen Larson, et al.  
**Auction Location:** Farmsite 14 mi S of Wallace, KS



**TRACTORS, COMBINE & HEADERS:** •'98 JD 8400 MFWD •'97 JD 8400 MFWD •'96 JD 8100 •'79 JD 4640 •JD 4650 •'71 JD 4320 •JD 4620, w/JD 158 loader •'68 JD 4020, w/JD 10' dozer •'01 JD 9650 STS • JD 893 corn head •JD 930R 30' platform

**TRUCKS, PICKUPS, TRAILERS, GRAIN CARTS, PLANTER, SWATHERS, FARM MACHINERY & MISC:** •'81 Ford LN8000 •'81 Chevy •'75 Ford LN8000 •Stock trls •Orthman 680 & A&L 650T grain carts •JD 1700 8-row MaxEmerge plus •JD 1214 & 1424 swing swathers •FK XL 7x6 blade plow •FK 5x6 blade plow •FK 6x5 blade plow •Quinstar Fallowmaster II w/24" sweeps & pickers

**AND MANY MORE ITEMS TOO NUMEROUS TO LIST!!**

## 1,120 ACRES GRASSLAND & CRP GREELEY COUNTY, KANSAS

**Fri, Feb. 15, 2008 @ 10:30 A.M., MST**  
**Auction Location:** 4-H Bldg, Tribune, KS  
**Sellers:** Hamann Heirs

The land will be selling in 4 individual tracts and combination of tracts

There is a great square section of pasture w/good water. The CRP acres can be converted back to good wheat land at the end of the CRP program. There are good renters available for the investor, great farm for the cattlemen owner-operator.

## 320 ACRES IRRIGATED CROPLAND LANE COUNTY, KANSAS

**Tues, Feb. 19, 2008 @ 10:30 A.M., MST**  
**Auction Location:** American Legion, Dighton, KS  
**Sellers:** Larry Neeley & Gerald D. Neeley Estate

### E/2 OF 30-17-27

This real estate offers 279.5 irrigated acres & 32.5 dryland acres.  
From the junction of Hwys 96 & 23 at Dighton, KS this land is located 5 mile E, 5 mi N & 1½ mi E.

## REAL ESTATE FOR SALE

**WICHITA** - 160 ac irrigated cropland - NE/4 of 20-17-35 - **JUST LISTED!!**

**RAWLINS** - Charming & secluded farmstead on 8 ac NE of Colby - 1,920 sq ft home, 2-car garage, shop, quonset, barn, & established windbreak!

**CHEYENNE** - 3 qtrs 3W & 4N of Bird City, KS - 410± ac cropland, 50± ac grass, and improvements!

"When you list with Farm & Ranch, it's as good as SOLD!"

**JUST LISTED**



**MORGAN RANCH**

2,560 acres working ranch with improvements located 10 miles South of Goodland, on the North Fork of the Smoky Hill River. This ranch offers 4 contiguous, square sections of grass w/pipelined water & 330.56 ac in CRP.

**Call DON today for a tour!!**