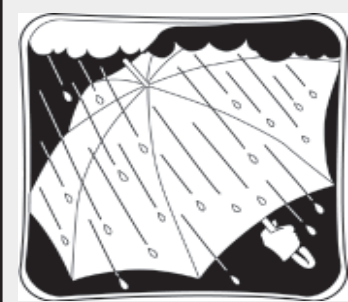


Weather Corner



Rainy

**The forecast**  
**Tonight** — Showers likely. Mostly cloudy, with a low around 38. North wind between 10 and 15 mph. Chance of precipitation is 60 percent. **Saturday** — Rain likely. Cloudy, then gradually becoming sunny with a high near 56. Northwest wind around 15 mph. Chance of precipitation is 60 percent. **Saturday night** — Partly cloudy with a low around 35. West wind between 10 and 15 mph. **Sunday** — Mostly sunny with a high near 70. West wind 5 to 15 mph becoming south. **Sunday night** — Mostly clear with a low around 38. **Monday** — Mostly sunny with a high near 71. **Monday night** — A 20 percent chance of showers and thunderstorms. Partly cloudy with a low around 37. **Tuesday** — Partly cloudy with a low around 31. **Temperatures**  
Thursday's high, Low this morning, Records for this date, 91 in 1943, -4 in 1987  
Precipitation last 24 hours, 0.00  
March's precipitation, 0.89

Briefly

Aviation seminar Saturday

“Aviation Safety Super Saturday,” sponsored by the Federal Aviation Administration, will be held at 9 a.m. Saturday at the Colby Airport terminal. The event will include speakers on flight restrictions, non-habit forming behavior, accidents and incidents and teaching and learning advanced aircraft systems. For information, or to register, call (316) 941-1208 or (785) 460-4438.

Tumbleweed Chorus to perform

The Tumbleweed Chorus will perform its 26th annual show at 2:30 a.m. and 7:30 p.m. Saturday at the Frahm Theatre at the Colby Community College Cultural Arts Center. The theme is “When the Circus Comes to Town.” Guest performers are the Salina Crossroads Barbershop Chorus. Tickets are available by calling 462-2474 or at the door.

Citizens Foundation scholarships

The Citizens Foundation at Citizens Medical Center in Colby is offering two scholarships to the nine-county area

of northwest Kansas. The scholarships are available to all ages, and they are looking to fund individuals who are beginning or furthering their medical careers. The deadline for applications is April 30. The scholarships are the \$1,000 Dr. Jeff Jennings Memorial Scholarship and the \$1,500 Citizens Medical Center, Inc. Health Care Scholarship. Applications are available online at [nwkshhealthcare.com](http://nwkshhealthcare.com).

City to pick up grass clippings

The City of Colby will begin picking up grass clippings Monday, April 9. Grass clippings must be bagged or canned, and separated from all trash. All collections must be at curbside by 8 a.m.

Kindergarten pre-enrollment

Kindergarten pre-enrollment for the 2007-2008 school year will be held from 7:30 a.m. to 3 p.m. Wednesday, April 4 at the Colby Grade School conference room. Parents or guardians need to bring the child's birth certificate, immunization records and Social Security card. Call the grade

school office at (785) 460-5100 for information.

Puddle Duck enrollment April 4

Enrollment-open house for the 2007-08 school year for Puddle Duck Preschool is from 4 to 6 p.m., Wednesday, April 4. The preschool is for 3- to 5-year-old children and welcomes all denominations, said Amy Jennings, school administrator. For questions, call 460-2603.

Easter Egg hunts planned

The Kiwanis Club Easter Egg Hunt will be at 10 a.m. March 31 at Fike Park. The hunt for children 3 and younger will be at 10 a.m.; 4-6 years old, 10:10 a.m. and 7-9 years old, 10:20 a.m. In case of bad weather, listen to KXXX or KQLS for more information.

Colby's Assembly of God Church is sponsoring an Easter Egg Hunt from 1 to 2:15 p.m., Saturday, April 7, at its facility, 245 W. College Dr. The hunt is open to children ages infant to 10 years old. Children under 6, should be accompanied by a parent. For questions, call 462-8234.

Board members talk about challenges to Colby district

From “SCHOOL,” page 1

Students lose 20 to 30 minutes of class because they are bused from the high school to the shop located on the west side of town.

Molstad, 45, has been on the board more than 10 years.

He joined the board after he was asked to fill an unexpired term.

“At that time I had two children in the district and wanted to offer anything I could to help move the district toward academic excellence,” he said.

“As a lifetime resident of Colby and a graduate of Colby High

School, my service on the board was something I wanted to give back to the community.

He is running for re-election because with the terms of four board members expiring, Molstad wants to keep some continuity to the board.

Molstad said the district's

strengths are its size.

“It's near the optimal size, our budget is large enough to provide some excellent opportunities, but small enough to provide for personal attention to students and staff,” he said.

A challenge he would like to see addressed is more stability in staff

and administration, especially at Colby High School.

“The high turnover of instructors and administrators does not create the best learning environment for the students,” Molstad said.

Molstad and his wife Maradith have been married 25 years and have two daughters.

Golden Plains race candidates have ideas to help school

From “CONTESTED,” page 1

“That's really helpful to any school,” Spreser said.

Spreser and his wife Renee have been married four years. They have six children.

Broeckelman, 52, of Selden, decided to run because the district

lacks leadership.

“There are rules in place that need to be followed,” he said.

“The dress code isn't being enforced. I think it's time to get involved.”

Broeckelman ran for school board four years ago.

He said the biggest advantage for the school district is its small size,

which allows more student-teacher contact.

A weakness that needs addressed is student accountability.

“They need to be more responsible for their actions,” Broeckelman said.

He and his wife Cathy have been married 27 years and have eight children. Five have already gradu-

ated from Golden Plains; three are still in school.

Schiltz, 28, is running because he attended school there and said he wants to make a difference. One of his children is now going to school there now.

“I thought I could be able to vote on it this way,” Schiltz said.

As a small school, Golden Plains gives its students more teacher-student time. A small student body allows for more camaraderie.

He said it's one of the few schools in the area that hasn't had a significant drop in its enrollment.

Schiltz has been married to his

wife Nicole for seven years. They have two children. He has not run for office before.

Ginther, 33, is also running for the board for the first time.

He said the school has strong academics, sports and a “great faculty and staff.”

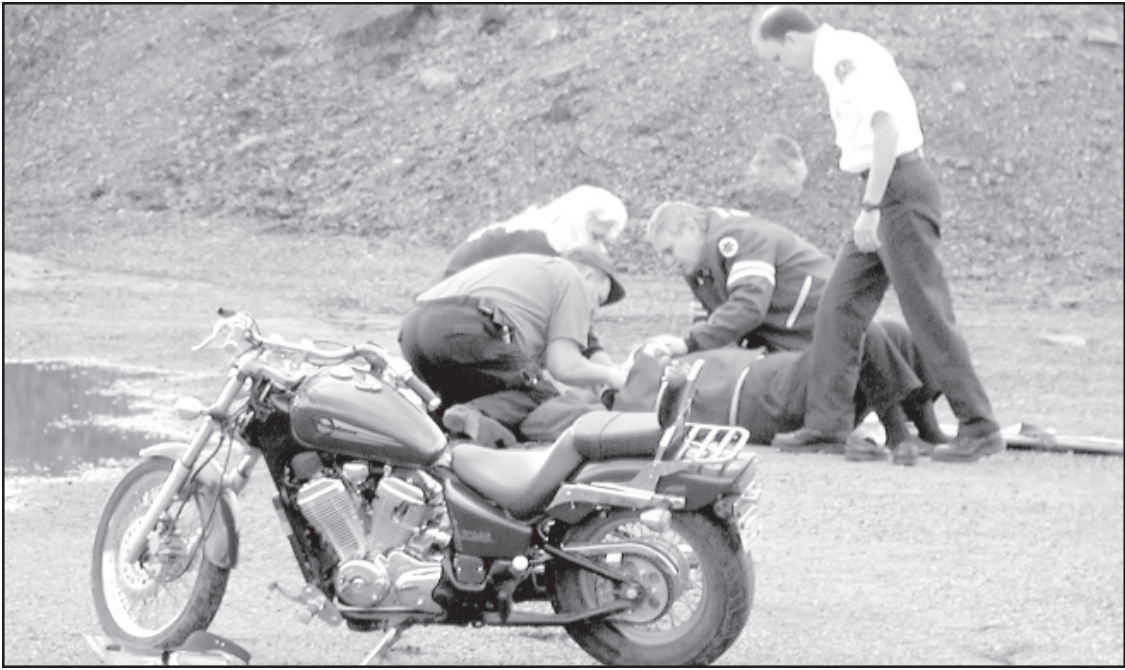
“I want to get involved with it,” Ginther said.

He said there are no real weaknesses he sees, but there are always things that can be worked on. He and his wife Carolyn have two children.

Other current board members are Dennis Allison and Teri Brantley.

Injury accident

Colby emergency crews treated Cindy Cervosky after a motorcycle accident Thursday afternoon about one mile west of Colby on U.S. Highway 24. According to a preliminary report from the Thomas County Sheriff's office, Cervosky was flown to a Denver, Colo., hospital.



JOHN VAN NOSTRAND/Colby Free Press

GIVE BLOOD. SHARE LIFE!

For more information on donating blood, please call 1-888-719-8929 or in the Wichita area, 268-0834

WRITE-IN

**Vernon Vance** for Rexford City Council

(Paid for by Vernon Vance)

Re-elect **LARRY MCDONALD** for CCC Board Trustee

Responsible for positive changes!

- Four Years Experience
- CCC Alumni
- Past Member of Economic Development Board

☐ I would appreciate your Vote Tuesday, April 3rd.

Paid for by Larry McDonald

**2nd Annual Buffalo Bill Hot Rod Show**

April 28, 2007 Oakley, Kansas

**Schedule of Events**

- Registration - 8 a.m. to 11 a.m.
- Downtown Show & Shine & Judging of Registered Entrants - 10 a.m. to 2 p.m.
- Free BBQ for all Registered Entrants - noon to 2 p.m.
- 60 mile Poker Run - 3 p.m. to 4:30
- Free Dance for Registered Entrants at the Oakley Country Club - 8 p.m. to Midnight - Trophies and Prizes will be awarded at the Dance

**\$25 Registration Fee**

**-Early Registration Encouraged-**

**Oakley Chamber of Commerce**  
313 Center Ave, Oakley, KS 67748  
[oakleycc@ruraltel.net](mailto:oakleycc@ruraltel.net)  
(785)672-4862 (785)672-4617

☒ Write in **Kevan Taylor** for Colby School Board!

Paid for by Kevan Taylor.

Being **NUMBER ONE** is nothing to celebrate.

This year, more than **163,000** people will die from lung cancer—making it America's **NUMBER ONE** cancer killer.

But new treatments offer hope.

Join **Lung Cancer Alliance** in the fight against this disease.

[lungcanceralliance.org](http://lungcanceralliance.org)

and Colby/Thomas County Chamber of Commerce welcomes:

**Plum Creek Ltd.**

Monday - Friday 9-5:30; Saturday 9-4

475 N. Franklin, Colby 785-460-1978

**Michelle & Lenny Patmon**

Pictured for Plum Creek are: Whitney Patmon, Regina Rydquist, Rose Carder, Michelle Patmon and Jenna Patmon.

**Swart-Park**

**OAKLEY KS**  
(800)491-3673  
(785)672-3221  
[www.swartpark.com](http://www.swartpark.com)

**PRICES GREATLY REDUCED!!**

 2005 Mercury Sable LS Lt Green w/ Tan Leather Moon Roof 22K	 2001 Ford F250 Crew Cab 4x2 Gold XLT w/Cloth Bench V10 130K
 2003 Ford Ranger S/C 4dr 4x4 Tan XLT w/ Cloth 52K	 1998 Lincoln Navigator 4x4 White w/ Tan Leather 100K
 2002 Chevy Venture Warn.Bros. Silver DVD 55K	 2001 Ford Explorer XLT Gold w/ Tan Leather 54K
2007 Ford 500 SEL Blue Lthr. 14K 2006 Ford Fusion SEL Silver Lthr. 10K 2006 Ford 500 Silver w/Grey Cloth 15K 2006 Ford Taurus Maroon w/Tan Cloth 17k 2003 Dodge Stratus RT White w/Grey Lthr. Moon Roof 53K 2004 Ford Explorer Eddie Bauer 4x4 White 42K	2005 Ford F150 S/C 4x4 White 76K 2001 Ford F150 Super Crew 4x4 XLT Red 101K 2000 Ford F150 S/C 4x4 XLT Maroon 2003 Ford F250 Crew Cab 4x4 Red 68K 2003 Ford F250 R/C 4x4 XL Tan 95K 2002 Dodge Dakota Reg. Cab 4x2 Black 61K 2002 Merc. Mountaineer AWD Cloth Green 91K