

# 4-H Style Revue brings out the best

## Young ladies model before large crowd



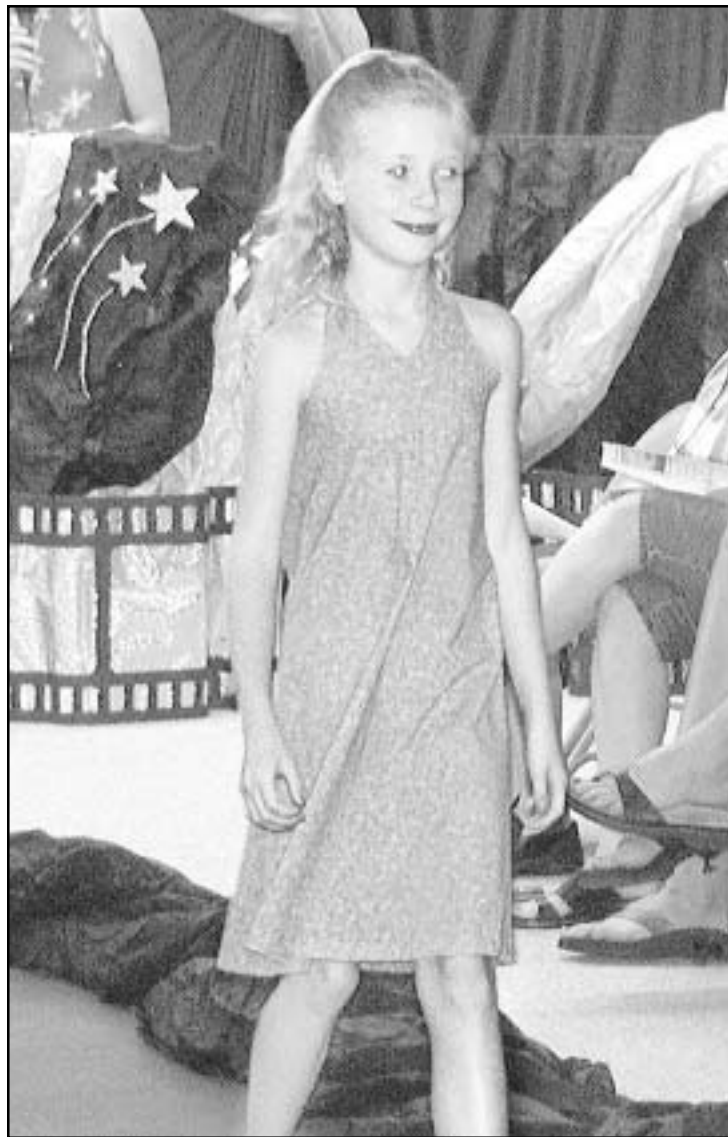
TISHA COX/Colby Free Press

Melissa Baird showed off an outfit for the crowd during the Thomas County 4-H Fashion Revue Tuesday night at Colby United Methodist Church. The event is one of many leading up to the Thomas County Free Fair Aug. 3-7.




TISHA COX/Colby Free Press

Michelle Bremenkamp took a trip down the catwalk during the Thomas County 4-H Fashion Revue Tuesday at Colby United Methodist Church. The theme for the evening was "Starstruck in Hollywood."



TISHA COX/Colby Free Press


Kortney Bredemeier was one of many 4-H members who modeled clothes during the "Starstruck in Hollywood" Thomas County 4-H Fashion Revue Tuesday night at Colby United Methodist Church.



### Escape to Wichita

**\$59<sup>95</sup>**  
Per Night + Taxes  
1-2 People

**BOOK ONLINE**  
[www.leisurehotelswichita.com/ksa](http://www.leisurehotelswichita.com/ksa)



- Free Hot Breakfast Buffet
- High Speed Internet Access
- Indoor Pool & Dome Area with Games

### Company Sponsored CDL Training!!

Stevens offers the most comprehensive training program in the industry for new drivers, with classroom and over-the-road instruction. Get your career rolling and enjoy exceptional earnings to \$65K, the most miles, and great benefits from the #1 premier carrier!

•No experience needed	•Best Training Program
•Exceptional benefits	•Best Equipment
•\$35-65,000 potential	•Most Miles
•No layoffs in 25 years	•Family Owned & Operated

Call toll free Today!  
**800-333-8595**  
[www.stevenstransport.com](http://www.stevenstransport.com)



# Ralph Ostmeyer



As you go to the polls August 3 I would appreciate your vote. A vote for me will be a vote for **Strong Family Values** including the **Basic Right to Life.**

I strongly support the amendment protecting marriage and have always supported fair and suitable funding for our schools. A vote for me is a vote for **Conservative Values.** My vote is

"Tested. Trusted."

Elect



**Ralph Ostmeyer**

State Senate - 40th District  
Republican

Vote August 3 - Primary Election

Pol. Adv. paid for by Ostmeyer Campaign Fund, Lori Edwards, Treasurer



### Scrapbook Garden

Hours: Mon-Sat 10-6, Sun 1-5  
[www.scrapbookgarden.com](http://www.scrapbookgarden.com)

New East Location!  
East Wichita - Kellogg & Rock  
(Eastgate Plaza next to Burlington Coat)  
618-6366

West Wichita - Maple & Ridge  
(Across from Lowe's)  
945-6366



Display your vacation photos in a scrapbook from Scrapbook Garden.

# UNICEL

## UNLIMITED Round the Clock CALLING

### \$35

monthly access

Stop by your neighborhood store, call 1-800-GO CELLULAR or visit [unicel.com](http://unicel.com) today!



SWITCH 2DAY & KEEP UR #  
1-800-GO CELLULAR



**\$19<sup>99</sup>**  
Sign up today and get a color screen Motorola 353 for \$19.99.

### Unicel's UNLIMITED ROUND THE CLOCK CALLING

Never worry about minutes again!

Call anytime and talk all you want for one low monthly fee. Unlimited Round the Clock Calling includes:

- Unlimited Mobile-to-Mobile Minutes
- Unlimited Night & Weekend Minutes
- Unlimited Incoming Text Messages
- Unlimited Incoming Calls

**Unlimited Anytime Minutes**  
All in your Home Area.

New 24-month service agreement required on all promotions.

**1-800-GO CELLULAR** (462-3558)    [www.unicel.com](http://www.unicel.com)

**Unicel Retail Stores: Colby:** 1933 South Range, Suite 1

**Unicel Authorized Agents:** Atwood: Decision Weather    Colby: Kansas Country Store    Goodland: Mobile Connections  
Great Bend: Karla's Salon • Palabra De Vida    Hays: Horizon Appliance • Midwest Drugs    LaCrosse: Dean's Auto Sales  
Ness City: Ness City Monument & Sign Co.    Norton: Computer Pro    Phillipsburg: Computer Pro    Plainville: Saven Video  
Sharon Springs: Amber's Hair Design    Smith Center: Family Healthmart    St. Francis: Steven's KS Territorial  
Stockton: Primetime    Wakeeney: True Value

Unicel is a service of RCC Holdings, Inc. Offer subject to terms of wireless service agreement and calling plan details. Additional fees will be added to your bill for each line of service to help defray Unicel's costs of complying with federal and state regulatory obligations; these fees are not taxes or government-required charges. \$25 activation fee required on all new activations. \$200 early termination fee applies to each line. Credit check and security deposit may be required. Unlimited plan and features only apply within Unicel's home licensed and operated area. Outgoing text messages are 10¢ per message. Digital features and service are not available in all areas and may vary due to atmospheric, topographical and other conditions. Requires use of approved tri-mode digital equipment. Must meet applicable legal age requirements, present valid ID and have a user address within the Unicel Home Area. Federal, state and local taxes and surcharges apply. Limited time offer; other restrictions apply. See store for details and guarantee terms and conditions.



part of life here.



MONEY BACK  
GUARANTEE  
30 DAY