

Deaths

Vivan "Boog" Duden

Vivan "Boog" Duden, 57, of Colby, died Wednesday, Jan. 15, 2003 at Citizens Medical Center.

Funeral services are scheduled for 2 p.m., Saturday, Jan. 18, at the Colby United Methodist Church with Father Galen Long officiating. Visitation will be Friday from 1 to 9 p.m. and Saturday from 10 a.m. until service time at Kersenbrock Funeral Chapel, 745 S. Country Club Dr., Colby. Burial will be at Beulah Cemetery in Colby.

Mr. Duden was born April 24, 1945 in Tyler, Texas and worked at the Colby Housing Authority.

He was preceded in death by his daughter, Angie, who died Jan. 30, 2000. Mr. Duden is survived by his wife, Doris, Colby; a son, John B. Duden, Bentonville, Ark.; a daughter, Debbie Zerr, Colby; two brothers, John Duden, McPherson, and Ivan Duden, Prescott, Ariz.; a sister, Joy Gaddie, Peyton, Colo.; and three grandchildren.

Memorials can be made to the Colby United Methodist Church or the Sacred Heart Church. Donations may be left at any Colby Bank or Kersenbrock Funeral Chapel.

Donna Quaduor

Donna Quaduor, 65, died Tuesday, Jan. 14, 2003 in Wichita. She was born on July 25, 1937 in McCook, Neb.

A memorial service was held today at the Levant Community Church with Pastor Jerry Vincent officiating.

There was no visitation, which was a request by the deceased. Her body was cremated. Inurnment will be in Lebanon, Neb. Cemetery, Saturday, Jan. 18.

Memorials can be made to the Levant Community Church and donations may be left at Kersenbrock Funeral Chapel, 745 S. Country Club Dr., Colby, Kan., 67701, which is also in charge of arrangements.

Survivors include her significant other, Clinton "Ike" Griffin, Levant; daughters, Beverly Albeke, Denver, Colo.; Cynthia Glasgow, Frontac; and Bonnie Jo Bond, Bellaire; sisters, Linda Thieben, Danbury, Neb., and Wilma Bethas of Florida, along with nine grandchildren and seven great-grandchildren.



The best place to find it, sell it, buy it, and announce it.

Albers, Wark to wed

Brooke Leigh is proud to announce the engagement of her mother, Brandi Rae Albers to Ryan Matthew Wark.

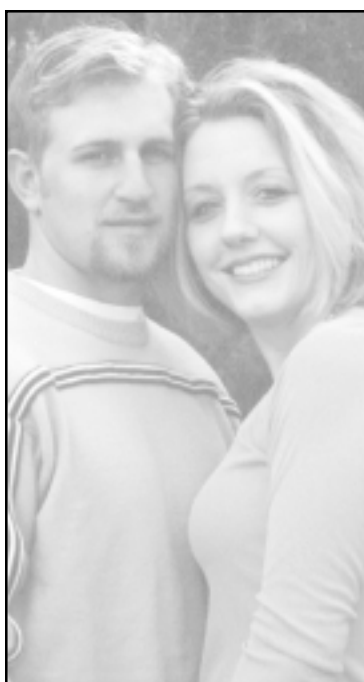
The bride elect, Brandi Albers, is the daughter of Mr. and Mrs. Fred and Kathy Albers of Rexford, KS. She graduated from high school at Golden Plains, Rexford, KS in 1996 and graduated from Colby Community College in Colby in 1998 as a Licensed Practical Nurse.

She then graduated in 1999 as a Registered Nurse with an Associates Degree in Applied Science. She is currently employed at Colby Medical and Surgical Center.

The prospective groom, Ryan Wark, is the son of Mr. and Mrs. Kevin and Susan Wark of Colby, KS. He graduated from high school at Colby High School, Colby in 1997 and graduated from Northwest Kansas Technical School, Goodland in 1998 with a degree in diesel mechanics.

He is currently employed by Wark's Farming.

The couple plans to marry at Sa-



Ryan Wark and Brandi Albers

cred Heart Church in Colby on May 24. Then Ryan, Brandi, and Brooke will reside in Rexford.

Farber, Daily engaged

Lynn and Kathy Daily of El Dorado announce the engagement of their daughter, Nicole, to Justin Farber of Hoxie. Justin is the son of Ron and Carol Farber, of rural Hoxie.

Nicole is a 1998 graduate of Bluestem High School, and will graduate this coming May from Colby Community College in Veterinary Technology.

Justin is a 1995 graduate of Hoxie High School, and a 1997 graduate of Colby Community College. Justin is an owner operator for Farber Trucking, and Nicole is currently employed at Montana Mike's steakhouse in Colby.

Grandparents of Nicole are S.L. and Goldie Daily of Wallace, KS, and the late William and Eileen Howe of Texas, Justids grandparents are Harold and Arvilla Taylor of Studley and Richard and Donna



Nicole Daily and Justin Farber

Mowry of Moreland.

The couple plan a Sept. 6, 2003 wedding, in Hoxie.

Clubs

XiZetaZeta

Nine members of Xi Zeta Zeta gathered at the Learning Center as Melinda Fiken gave an enlightening overview of their services on Jan. 13.

Following the program, the meeting was called to order at the home of Lynn Carpenter. Those answering roll were: Relda Galli, Coleen Dougherty, Kathy Ryan, Linda Ryan, Lynn Carpenter, Brenda Kimberly, Anita Porter, Deanna Sulzman, and Judy Taylor. Everyone shared their New Year's resolution. Committee reports were reported. Discussion was held on the scholarship and Judy Taylor will chair this committee. Founder's Day was also discussed.

The next meeting will be at Deanna Sulzman's home on Jan. 27.

Sorosis Club

The Sorosis Club of Colby held their first meeting of the year 2003 on Jan. 10 at the Prairie Museum of Art and History.

Sorosis Club was organized in 1932 and scrapbooks, yearbooks, and secretary's notes have been donated to the Museum. Many of them were on display for the members to look over. Keela Case, Secretary, presented to the Museum, Sorosis secretary's reports dating from January of 1992 to Dec. 13, 2002.

Sue Taylor, director of the museum, said their display of pictures telling the History of Colby as it has been researched.

She then told the group of the new projects the museum has planned, particularly that of a display of their doll collection and the time that has been spent researching the history of the dolls.

One display of particular interest to the group was that of artifacts from A to Z.

In recognition of this being the 70th year of the Sorosis Club, roll call was answered by members telling of a cherished memory of a club meeting.

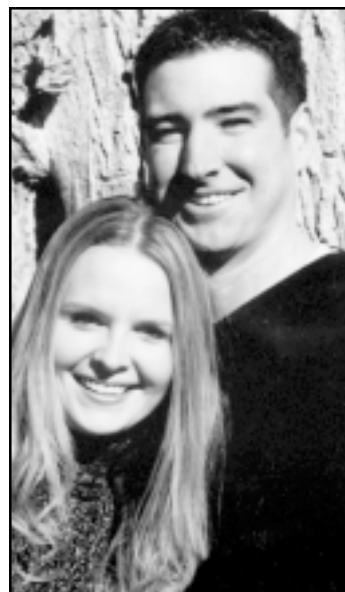
The next meeting of the Sorosis Club will be on Feb. 14 at 1:30 p.m.

Brenn and Dumler to marry

David and Shirley Brenn of Garden City announce the engagement of their daughter, Chelsey Renee, to Ryan Ward Dumler, son of Ward and Joanne Dumler, Colby.

The bride-to-be graduated from Garden City High School and the University of Kansas with a bachelor's degree in Social Welfare. She is employed at Lakeview Village in Overland Park.

The future groom graduated from Colby High School and the University of Kansas. He is employed as a branch manager for



Chelsey Brenn, Ryan Dumler

Fastenal Company in Grandview, Mo.

The wedding will take place at 5 p.m., Feb. 8, 2003, at the Colby United Methodist Church.

100's of Previously Viewed Movies Now On Sale!!

NOW IN:

- Signs
- XXX
- Fear.com
- Plus many more!

Hours: 11 a.m.-11 p.m., 7 days a week

\$1.00 OFF
any movie sale
over \$2.00 -
January 17, 18,
19 & 20th.

OFFER EXPIRES
JANUARY 20, 2003



830
S. Franklin
Colby
462-3108

640 ACRES CROPLAND, GRASSLAND & IMPROVEMENTS

THOMAS COUNTY REAL ESTATE AUCTION

FRIDAY, JANUARY 24, 2003
@ 10:30 AM

SELLERS: Arthur & Cindy Grover

AUCTION LOCATION: COMFORT INN CONFERENCE CENTER JUST SOUTH OF I-70 IN COLBY, KS

LEGAL DESCRIPTIONS:

TRACT 1: SE/4 OF 30-8-31
TRACT 2: NE/4 OF 31-8-31
TRACT 3: SW/4 OF 32-8-31
TRACT 4: SE/4 of 31-8-31, less a 5+ ac tract
TRACT 5: 5+ac improvement tract in the SE/4 of 31-8-31

FSA INFORMATION:

Tracts	Cropland** Acres	Grassland** Acres	Wheat** Base/Yld	Gr Sorghum** Base/Yld	2002 Taxes
1	159.71		80.5/42	48.7/47	\$486.32
2	123.91	30±	62.6/42	37.9/47	\$814.61*
3	161.28		80.5/42	48.8/47	\$505.40
4		155+			\$814.61*
5		5+			\$814.61*

**All FSA bases are estimated on prorated share of cropland per tract. Final bases and yields shall be determined by Thomas County FSA.
*2002 Taxes for Tract 2, 4 & 5 are combined and shall be split by the Thomas County Treasurer if sold separately.

FSA PAYMENTS: Buyer(s) shall receive the landlord's share of all 2003 FSA wheat payments and 100% of all 2003 FSA grain sorghum payments
POSSESSION & CROPS: Possession shall be day of closing on the open land. Buyer(s) shall receive landlord's share of the 2003 growing crops.

MANNER OF SALE: This real estate will be offered as a "MULTI-PARCEL" auction in individual tracts and in combinations of tracts. It will be sold in the manner that produces the highest aggregate bid. There will be OPEN BIDDING on all tracts and combinations of tracts during the auction as determined by the auctioneer. Bids on tracts, tract combinations and the total property may compete. Auction procedure and increments of bidding are at the discretion of the Auctioneer.

TERMS: 10% down day of sale with balance upon approval of title, on or before February 24, 2003. Personal and corporate checks are acceptable for the down payment with the final payment to be in certified funds. Bidding is not contingent upon financing. Financing, if necessary, needs to be arranged and approved prior to the auction. **Announcements made day of sale take precedence over printed material.**

ACCEPTANCE OF BIDS: Each successful bidder will be required to enter into a Farm & Ranch Contract to Buy and Sell Real Estate immediately following the auction. Copies of these contracts will be available from the auctioneer prior to the sale.

EVIDENCE OF TITLE: Sellers will provide title insurance to the Buyer(s) in the amount of the purchase price, with the premium to be paid one-half by the Sellers and one-half by the Buyer(s). Title evidence will be provided on sale day. Buyer(s) may close as soon as closing documents are prepared - no later than February 24, 2003.

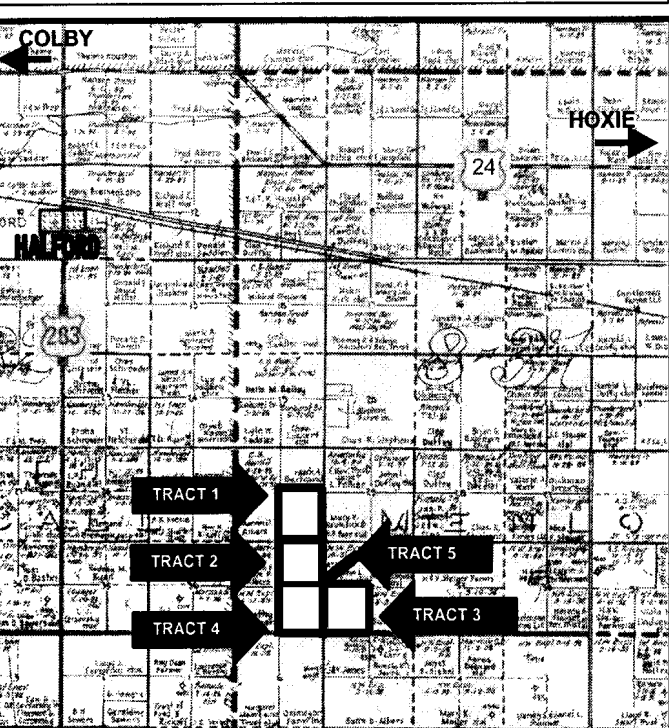
ACREAGES: Acreage figures are considered to be approximate and are from reliable, sources, based on (USDA) FSA figures. All FSA information is subject to change. FSA acres may not be the same as deeded acres.

EASEMENTS: This sale is subject to all rights-of-way and easements, whether recorded or not, and to any oil and gas leases of record.

SURVEY: In the event Tracts 4 and 5 sell separately, Seller shall provide a survey at their expense to determine the exact legal descriptions. Tracts 1, 2 and 3 shall not be surveyed.

MINERAL RIGHTS: All of the Seller's interest shall transfer to the Buyer(s), subject to a perpetual one-half (1/2) mineral reservation of record on Tract 1.

REAL ESTATE TAXES: Sellers shall pay taxes for all of 2002 and prior years. Taxes for 2003 shall be paid by the Buyer(s).



VISIT OUR WEBSITE AT www.farmandranchrealty.com

AUCTIONEER'S NOTE:

This NEAR LEVEL CROPLAND AND GRASSLAND is an excellent farm. The improvements are very rustic - location is good in an area that land has retained its value very well. Call Ed Currier for a tour of the farm and come to the auction **READY TO BUY—THIS IS A "KEEPER"!**



FARM & RANCH REALTY, INC.
ED CURRIER, LISTING AGENT
P.O. Box 947 • 1420 W. 4th
Colby, KS 67701 • Telephone (785) 462-3904
DONALD L. HAZLETT,
BROKER/AUCTIONEER



"When You List With Farm & Ranch, It's As Good As Sold!"

1400 anytime minutes \$24.95



Call when you want to...don't worry about only after nine and on weekends anymore. For quite awhile WestLink has been offering the best anytime minutes packages around...and here they come again! WestLink presents 1400 anytime minutes just \$24.95 a month. Act now and WestLink will throw in caller ID, voicemail and text messaging for free. It's "anytime anarchy" with 1400 anytime minutes at just \$24.95. Join in only at:

WestLink
1025 Patton - Great Bend
620-868-5000

Colby Photo
420 N Franklin - Colby
785-462-8169



2501 Campus - Garden City

1010 Downing - Hays

www.westlinkcom.com