

Classifieds

Help Wanted

LPN. \$15/hour. Hours negotiable. Call 462-2875.

—12/26—1/2—

Assistant manager for Crown Motel. Ideal for retired person. Please call 462-3943 for appointment.

—12/24—1/8—

Full time optical assistant position available with Dr. Larry Washburn Family Optometry. In office training. Please send resume to: Dr. Larry Washburn, 505B N. Franklin Ave., Colby KS 67701.

—12/24—1/8—

Ranch assistant manager. Full time. The Nature Conservancy, the world's largest private conservation organization, seeks a conservation-minded individual to assist with all aspects of ranch and preserve management on the Smoky Valley Ranch, Logan county, Kansas. Position will handle and manage livestock and bison, maintain fencing and equipment, control unauthorized access, participate in prescribed burns and handle problem species control. Hours are irregular with many spent working alone. Requires ability to do physically demanding outdoor labor, valid driver's license and interaction with visitors and staff. Need to live near ranch. Please forward qualifications to: The Nature Conservancy, Attn: Director of Administration, 700 SW Jackson St. Ste 804, Topeka, KS 66603. E.O.E. Phone 785-672-3834. E-mail: kmorris@tnc.org. Visit: nature.org The Nature Conservancy.

—12/27—

Apartments for Rent

2 bedrooms, utilities and cable furnished. No pets, no children, no smoking. 462-9828.

—12/26—12/31—

Nice 1 bedroom apartment in Colby. All utilities paid, free laundry. Call 785-586-2346 or 443-3473.

—12/18—12/27—

Cute 1 bedroom studio apartment. All utilities paid. Call 462-3285 or 443-3472.

—12/18—12/27—

2 bedroom brick apartment. All utilities and cable paid, free laundry. Call 462-3285 or 443-3472.

—12/18—12/27—

Newly carpeted 2000 sq. ft. 2-3 bedroom apartment. All new appliances including washer and dryer. All utilities and cable paid. Off street parking. Call 462-3285 or 443-3472.

—12/18—12/27—

2 bedroom furnished apartment. Washer, dryer and dishwasher. 462-6587.

—12/18—tfn—

Nice 2 bedroom apartment. Some utilities paid. Call 462-2331.

—12/6—tfn—

Apartments for Rent

Sunflower Apartments of Colby offers affordable housing. 1 and 2 bedroom apartments. Stove, refrigerator, and garbage disposal furnished. Water, trash and sewer paid, utility allowance. Apply at 1170 S. Franklin Ave., or call Lynn Cameron at 462-6349 for application. TDD 1-800-766-3777. Equal Housing Opportunity.

—11/20—tfn—

Houses for Rent

3 bedrooms, 1 bath, no pets. Available January 1st. Call 462-3939 day, or 785-672-3420 evenings.

—12/26—12/30—

Newly carpeted, freshly painted 3 bedroom, 2 bath home with full basement. Call 462-3285 or 443-3472.

—12/18—12/27—

Two-three bedrooms, newly redecorated, fenced-in backyard. Call Houses with Personality, 462-8267.

—12/17—12/30—

For Rent - Mobile Homes

Cozy 2 bedroom, 1 bath. Very reasonable rent and deposit. Also larger 2 bedroom, W/D. 462-7468 or 462-1047.

—12/20—1/3—

3 bedroom double wide on private lot. Car port and storage shed. \$325 plus deposit. 645 E. 7th St. 462-3404.

—12/13—tfn—

2 bedroom, furnished, washer, dryer, A/C, water paid, near park, student discount. 462-2126.

—12/11—tfn—

For Sale - Mobile Homes

12x60 Pacemaker. 2 bedrooms, 1 bath. Needs to be moved. 785-462-7331 or 785-462-0398.

—12/26—1/2—

1995 Skyline Sabre. 16x80, 2 bath, excellent condition. Located in Manhattan. 785-443-3307.

—12/20—12/27—

Offices for Rent

Great business location in downtown Colby. Can remodel to your specifications. New carpet and vinyl to be installed. Call 785-586-2341 or 785-443-3473.

—12/18—1/3—

Misc. for Sale

Collector's plates. Rockwell, Perillo, Knowles. Over seventy plates. All in original boxes. 785-462-3694.

—12/23—12/31—

7 person hot tub. New cover, steps and 2 planters, \$3,000. 785-694-2872.

—12/19—12/27—

Firewood, hard woods. Split, stacked, and delivered. 785-421-8909.

—12/18—2/28—

Premium quality milo in large round bales. Colby. 785-462-2288.

—11/29—12/31—

Childcare

Registered day care provider has opening for one child two years and older. 462-9998.

—12/18—1/3—

Vehicles for Sale

1996 Chevy Cavalier. 86k, air, auto., AM/FM cassette, new tires & brakes. Excellent condition and priced for a quick sale. Evenings: 462-2922 or 462-3938; days: 462-2224.

—12/20—12/27—

1996 Dodge 3/4 ton, 4 WD. 1996 Sunfire, new tires, great condition. 785-462-6929, 785-443-2246.

—12/20—12/27—

Legal Notice

IN THE DISTRICT COURT
OF THOMAS COUNTY, KANSAS

In the Matter of the Estate of
Cloyd R. Bray aka Cloyd R. Bray, Deceased.
Case No. 01-P-31

NOTICE OF HEARING ON PETITION FOR FINAL SETTLEMENT

The State of Kansas to All Persons Concerned:

You are hereby notified that a petition has been filed on December 13, 2002, in this Court by Ronald W. Bray, executor of the estate of Cloyd R. Bray aka Cloyd R. Bray, deceased, praying for a final settlement of the estate, approval of his acts, proceedings and accounts as executor, allowance for attorneys' fees and expenses, determination of the heirs, devisees and legatees entitled to the estate and assignment to them in accordance with the Will of Cloyd R. Bray aka Cloyd R. Bray, deceased.

You are hereby required to file your written defenses thereto on or before January 13, 2003, at 10:00 o'clock AM, on such day, in such Court, in the City of Colby, in Thomas County, at which time and place such cause will be heard. Should you fail therein, judgment and decree will be entered in due course upon said petition.

RONALD W. BRAY

Submitted by:
John D. Gatz, #10808
Starkey & Gatz, L.L.P.
P.O. Box 346
Colby, Kansas 67701
785-462-3383
Attorney for Petitioner

(Published in The Colby Free Press on December 20, and 27, 2002, and January 3, 2003)

INTERACTIVE TECHNOLOGY/ DISTANCE LEARNING COORDINATOR in OAKLEY

The Northwest Kansas Educational Service Center has a vacancy for an Interactive Technology/Distance Learning Coordinator in Oakley. This position requires a high school diploma or equivalent; however, a Bachelor Degree is preferred. This is a 12-month position with paid sick, personal, and vacation leave, and paid single health plan. Salary will be commensurate with experience and education. To request an application, contact Rose Langley at 785-672-3125. Position-related questions should be addressed to Dan Thornton. Applications will be accepted until the position is filled.

NKESC is an EOE

RN's/LPN's

Are you interested in working in a friendly, family-like environment? We have positions available in our organization for RN's and LPN's on our evening and night shifts. Positions qualify for full benefits including BC/BS, life insurance, and paid time off. Relocation assistance available to qualified applicants. If interested, contact the Director of Nursing at one of the following locations:



St. John's of Hays
2401 Canterbury
Hays, KS 67601
785-628-3241

St. John's Rest Home
701 7th Street
Victoria, KS 67671
785-735-2208

A Christian Community Caring

Vehicle for Sale

2000 Ford F150 XLT, super cab, 4x4, 26k, 5.4 liter V8, black. 443-1337.

—10/3—tfn—

Business Services

Internet Access. 56K. Plans from \$12.95 a month. contact Gavon's Electronics, Colby 462-6601 or 800-864-4400.

—12/27—

Business Opportunity

Stay at home moms and dads: raise your income while you raise your family. Proven and legitimate. <http://dianek.team2succeed.com> 785-443-3617.

—12/19—12/27—

Legal Notice

IN THE DISTRICT COURT OF THOMAS COUNTY, KANSAS PROBATE DIVISION
In the Matter of the Estate of Inace Parker aka Inace Marie Parker, Deceased.

02-P-50

NOTICE TO CREDITORS

The State Of Kansas To All Persons Concerned:

You are hereby notified that on December 20, 2002, a Petition for Probate of Will and Issuance of Letters Testamentary was filed in this court by Gerald A. Parker, an heir, devisee and legatee and executor named in the Last Will and Testament of Inace Parker aka Inace Marie Parker, deceased. All creditors of the above named decedent are notified to exhibit their demands against the estate within four months from the date of first publication of this notice, as provided by law, and if their demands are not thus exhibited, they shall be forever barred.

GERALD A. PARKER
PETITIONER

Submitted by:
John D. Gatz
Supreme Court No. 10808
Starkey & Gatz, L.L.P.
P.O. Box 346
Colby, Kansas 67701
(785)462-3383
Attorney for Petitioner

(Published in The Colby Free Press on December 27, 2002, January 3 and 10, 2003)



Kansas Classified Ad Network

Economic Development Executive Director For Anderson County and City of Garnett

The City of Garnett seeks a qualified economic development professional to fill the position of Economic Development Director. The Economic Development Director is responsible for implementing programs to promote economic development expansion, retention, recruitment for both commercial and industrial activities and promote tourism projects. Three years experience in economic development work or related field, degree in business, public administration or related subject area preferred. Salary dependent upon experience and qualifications. Send resume and references to the City Manager, P.O. Box H, Garnett, Kansas, 66603. Applications will be accepted until a qualified candidate is selected. EOE.

Kansas Classified Ad Network

Vehicles for Sale



2000 Cadillac Eldorado

- Bronze Mist
- Neutral Leather
- High Polished Wheels
- 1 Owner
- 51K Miles

Volume Price \$18,900

Hard To Find

1997 Pontiac Gr. Prix SE 4Dr.

- Red
- Graph Cloth
- 3.8 V6

- Locally Owned
- 51K Miles

Under 10,000- Like New

Volume Price \$7,900



2000 Ford Taurus

- Light Beige
- Neutral Cloth
- Off Lease
- Very Clean
- 30K Miles

Volume Price \$9,900

Off Lease - Great Buy

2000 Chevrolet Reg Cab 2WD

- Pewter
- Cloth Bench
- V-8

- Silverado
- 38K Miles

Locally Owned - Low Miles

Volume Price \$13,800



2000 Pontiac Grand Am

- Silver GT
- 4 Door
- Spoiler
- CD
- 34K Miles

Volume Price \$11,500

Sporty Sedan School Car

2001 Chevrolet Venture

- Silver
- Gray Cloth
- 4 Door

- Hard Loaded
- 32K Miles

Family Special

Volume Price \$15,900



Take Your Pick For Only \$13,900

2002 Pontiac Grand Prix SE

- Silver
- CD
- Spoiler

- Wheels
- Keyless Entry
- 14K Miles



2002 Pontiac Grand Prix SE

- Wine Red
- CD
- Spoiler
- Wheels
- Keyless Entry
- 10K Miles



FINLEY MOTORS, INC.

Highway 27 • Goodland, KS
(785) 899-2346 or 1-800-525-3701
www.finleymotorsinc.com

JOB OPENING FOR:

- ~ Registered Nurse - Part-Time, \$1,000 Sign-on Bonus
- ~ Licensed Practical Nurse Full-Time, \$2,000 Sign-On Bonus
- ~ Licensed Practical Nurse - Part-Time, \$1,000 Sign-on Bonus
- ~ Certified Nurses Aide - Full-time
- In long-term care setting -

LANTERN PARK MANOR

105 E. College Drive • 785-462-6721

EOE/M/F/D/V

COME JOIN OUR TEAM!

Citizens Medical Center and Prairie Senior Living Complex are looking for caring, qualified professionals to join our expanding Healthcare team. We have the following opportunities available:



**CITIZENS
MEDICAL CENTER**

- RN - Full-time RN with OB experience
- RN Supervisor - Full-time position
- Physical Therapist - Full-time position
- CNA - Day/Evening Shifts
- Ward Secretary - Full-time position



**PRAIRIE SENIOR
LIVING COMPLEX**

- LPN/RN - Full-time & part-time positions
- CNA - Full-time position
- Director of Dietary Services - Full-time position

We offer competitive wages and a benefits package that includes health and dental insurance with a portion of the premiums paid. If you want the opportunity for professional growth and the chance to make a difference in the lives of others, please contact: Human Resources, Citizen Medical Center, 100 E. College Dr., Colby, KS 67701. Or call our Employment Information Hotline at 785-462-1200. EOE

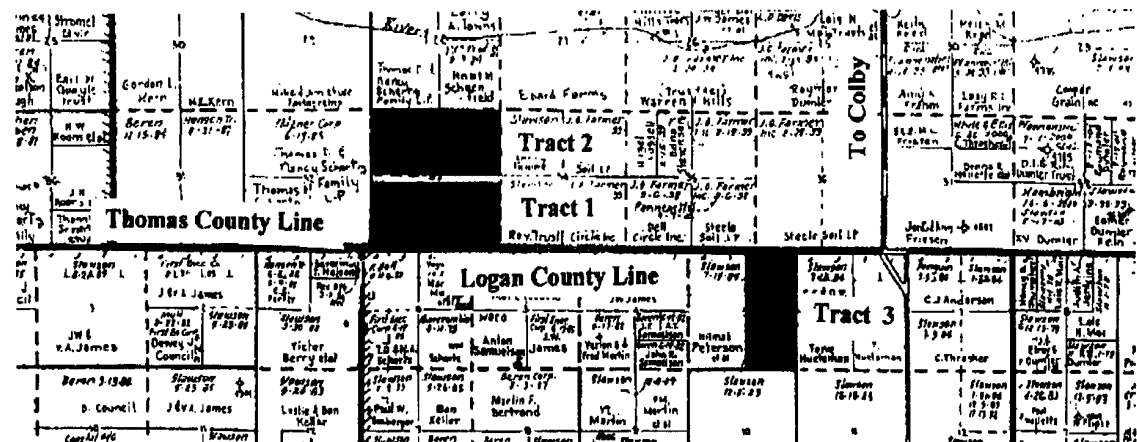
~ AUCTION ~

Monday, January 13, 2003

10:30 a.m. • Quality Inn • Colby

Schoendaller Farms

Owners: L.K. Gross & S.L. Hellner



Tract 1: South 1/2 section 33-10-34 Thomas County; 320+/- acres.

Tract 2: North 1/2 section 33-10-34 Thomas County; 320+/- acres.

Tract 3: East 1/2 section 3-11-34 Logan County; 320+/- acres.

The property will be offered in three individual tracts and not combined for bidding. All mineral interests owned by the Seller, if any, will be conveyed to the Buyer. The 2002 and prior years taxes are to be paid by the seller. A 10% earnest money payment is required on the day of the auction. The projected closing date is on or about February 13, 2003. The balance of the purchase price will be payable at closing in cash, a guaranteed check or by wire transfer.

Farmers National Company and its representatives are agents of the Seller.



Website: Farmers-National.com
E-Mail: hazlett@colby.ixks.com

Vern Hazlett - Broker-Auctioneer
785-462-8271 • 443-3456

Serving America's Landowners Since 1929

Classifieds

Real Estate

Real Estate

Business Services

Notices

Kansas Classified Ad Network

Kansas Classified Ad Network

BECOME A PART OF DOWNTOWN
For Rent: 3,000 square commercial building ideal for retail or office. Call Homeland at 785-462-8255. Great lease incentives.


South Park Apartments Meadowlark Manor
- Rent based on income -
 **785-462-6763**
EQUAL HOUSING OPPORTUNITY

Refinancing can make life easier...
Rates are good! Call today for a quote!

FARMERS & MERCHANTS
BANK OF COLBY
Together...Making a Difference
240 W. 4th • Colby • 462-3321

WE OFFER THE FOLLOWING PROGRAMS:

- Conventional Loans
- Refinancing
- FHA/VA Loans
- Rural Housing Loans



ELAINE KOERPERICH
MEMBER FDIC

Heartland Rural Counseling Services, Inc.
270 N. Franklin, Suite C • Colby, KS
785-462-7588
Specializing in family issues - play therapy, marital therapy, depression, anxiety, stress, trauma, anger management, ADHD, abuse, divorce, and grief.

Real Estate

For Home Purchases or Refinancing
CALL ME 1st!!!

ROBERT DIBLE
HL Financial Services

140 W. 4th • Colby, KS
785-462-3359
1-800-658-4697
American Home Loans
Conventional • VA • FHA
NO APPLICATION FEES

IMPORT ENGINES

STARTING AT:
TOYOTA 22R.....\$1,329
MAZDA 2.0.....\$1,225
NISSAN VG30.....\$1,895
HONDA EWI 1.5...\$1,483
Prices are exchange with rebuildable engine core

36 MONTH
100,000 Mile Warranty
financing available Low monthly payments to qualified buyers!

 **MARSHALL**
ENGINE HEADQUARTERS
S&W SUPPLY CO.
185 W. 5th • Colby
785-462-3373

Real Estate

Families & Individuals
Call for Free, no obligation information on:
Health Insurance*
@ Affordable Rates!

- * A company whose A.M. Best rating is "A-(Excellent)." **
- * You cannot be singled out for a rate increase.
- * You cannot be singled out for cancellation.
- * Allows you to choose your doctors and hospitals.
- * Flexible programs to fit your needs and your budget.
- * PLUS over 100 valuable business benefits through association membership.
- * A licensed insurance agent will contact you. (They may not be available in all states)

Toll-free: 1-888-535-1512 **Independent analysis who evaluate insurance companies. Ratings are reviewed and adjusted annually.



 **Scrapbook Garden**
•Albums •Stickers •Rubber Stamps
Look no further for the perfect gift...
A Gift Certificate from Scrapbook Garden is both practical and valued!

West Wichita - Maple & Ridge
Toll Free: (866) 945-6366
www.scrapbookgarden.com • Hours: Mon-Sat 10-6, Sun 1-5, Call for evening hours

East Wichita - Kellogg & Rock
Toll Free: (866) 618-6366

CONVENIENTLY LOCATED AT THE CROSSROADS OF COMFORT AND VALUE.

RAMADA
A very good place to be.SM

RAMADA.COM or 1.800.2 RAMADA
Ask for promo code LPGP to receive this discounted rate.

Iowa: Cedar Rapids (2) Clinton, Meke Hay (Des Moines area) Mt. Pleasant
Nebraska: Kearney Lincoln (3) Norfolk North Platte Ogallala Omaha
Kansas: Lawrence Leavenworth Manhattan Salina Wichita (2) Missouri: Kansas City St. Joseph
Rooms at the LPGP rate are limited and subject to availability at the participating properties noted. Standard rooms only are available at LPGP rate. No additional charge for up to four people per available room. (Bed and breakfast and other restrictions apply. Advance reservations required. Cannot be combined with any other offer, promotion or special rate. ©2002 Ramada Franchise Systems, Inc. All rights reserved. All hotels are independently owned and operated.

410 N. Franklin
Colby, Kansas
785-462-8255
homelandre@aol.com

HomeLand
REAL ESTATE
Serving Northwest Kansas since 1946

114 West 12th
Goodland, Kansas
785-899-3060
homelandg@aol.com

We will close at noon on December 31, 2002 & will be closed January 1, 2003. Have a Happy New Year!

715 Sunset Drive	1001 Court Terrace	1235 W. 6 th
815 Cherokee Drive	1435 W. 3 rd	1060 E. 8 th
810 N. Country Club	625 Woofert	935 E. 5 th
540 W. 4 th Street	450 N. Sterling	1020 E. 9 th
935 E. 5 th Street	355 W. 6 th	180 E. Plum
1111 Flint	165 S. Franklin	2006 Co. Rd. I
1124 Flint	1815 W. 5 th	115 Spruce; Rexford
1115 Maize	375 E. Walnut	1099 CR Z; Levant
665 N. Court	908 Court Terrace	1814 CR 10; Levant
	1690 W. 4 th	Rt. 2; Hoxie

Make an appointment to see any of these fine listings.

WHEN ONLY THE BEST WILL DO...CALL!!

Colby Warren C. Hixon, Broker (785) 462-6818 Pat Koch • 462-6119 Pat Sloan • 462-7495 Marilyn Kersenbrock • 462-2703 B.J. Melvin • 462-2483 Marj Van Camp • 462-2648	Goodland Tom Harrison, Branch Broker (785) 465-9015 Rosanne Anderson • 899-7464	Oakley Jerry Wycoff • 672-3763
--	---	--

ASAP.....
HOME INSPECTIONS

When a home is for sale, a professional home inspection makes a difference to the seller and the buyer.

For Security. For Protection.
For a Smoother Closing...

Call:
PAUL BAILEY,
Inspector
785-443-2096

• 23 years experience in adjusting insurance claims
• Special knowledge in building construction

Western Appraisal Service

For your appraisal needs to include:
Farmland, Commercial and Residential Property.

Edward G. Currier,
Certified General Appraiser
Paul F. Bailey,
Associate
Ph# 462-6913
Fax# 462-6883

• NOTICE •

AD RATES

For Classified Word ads are as follows:

1-2 days	25¢/word
3-4 days	18¢/word
5-9 days	17¢/word
10-14 days	16¢/word
Monthly (tfn)	15¢/word

(*Price reflects 15 word minimum ad. Ads must be in our office by 12:00 noon the day before. In case of error, call us the FIRST day your ad runs since we will not be responsible for errors after the first day/week.

COUNTRY ADVOCATE
\$6.00/per week - 10 words
(additional 25¢ word thereafter)
13¢/word pick-up rate (with 3 consecutive day run in Free Press)
ADS MUST BE IN THE OFFICE BY 12:00 NOON ON FRIDAY.
DISPLAY (box) AD DEADLINE FOR FREE PRESS IS 3:00 P.M. TWO DAYS BEFORE AD RUNS. Display Rate: \$6.85 per column inch. **COUNTRY ADVOCATE DEADLINE IS 12:00 NOON ON FRIDAY.**

COLBY FREE PRESS **462-3963**

KITCHEN & BATHS CABINETS & COUNTERTOPS
Design • Remodel • Installation
"Serving the Area Since 1984"
Call Dennis at:
THE TOOL BOX
785-462-7843

BUSINESS DIRECTORY

To have your ad placed in the Business Directory, call Derek or Crystal at 462-3963.

Cal Spas
It's the Logical Choice!TM

Pool Tables \$34 per month

FREE Accessory Kit with Pool Table Purchase!

- Bar & Bar Stools
- 3 in 1 Game Tables
- Darts
- Poker Tables
- Lamps
- Cue Racks & Sticks
- Starter kits
- Game Table Chairs
- Wide Selection of Billiard Tables


1200 W. 4th
Colby, KS • 462-8350

New System Professional Window Cleaning
Colby, Kansas

Dear Chris and Beth,
"THANKS ALOT! Windows look beautiful."
Serina Lake, Goodland, Kan.

(785) 462-6995
(800) 611-6735

ULTRA LITE STYLE
FAMILY OF LENSES



Larry Washburn, O.D.
Doctor of Optometry
505 Franklin
Colby, KS
785-462-3348

SEASONS GREETINGS & BEST WISHES

Rock Bedore • Molly Oliver • Ed Currier • Steve Hazlett • Ron Evans
FARM & RANCH REALTY, INC.
1420 W. 4TH - COLBY, KS
785-462-3904
DONALD L. HAZLETT, Broker
"WHEN YOU LIST WITH FARM & RANCH, IT'S AS GOOD AS SOLD!"
VISIT OUR WEB SITE AT www.farmandranchreality.com

RESIDENTIAL & COMMERCIAL

11 Cottonwood Dr.	335 S. Grant	715 S. Garfield
110 N. Range	917 Court Terrace	Mobile Homes in
310 S. Garfield	160 N. Plum	Friendly Acres
1113 Court Place	295 E. Plum	130 Main - Rexford
565 W. 2nd	335 W. 6 th	1080 K-25
545 S. Garfield	1705 Lynda	321 3 rd St - Menlo
450 S. Garfield	250 S. Garfield	115 W. Washington
480 S. Garfield	135 N. Grant	1523 & 1524 W. 4 th
1280 W. 7th	270 N. Riddle	390 N. Franklin
575 W. 6 th	848 W. 8 th	950 S. Range
1000 E. 9 th	960 E. 9th	400 N. Franklin
1000 E. 8 th	480 W. 7 th	1121 Summer Sun

REAL ESTATE

TH - 160a sprinkler irrigated—all wheat to Buyer—NEW LISTING!!
LG - 2,240a RANCH—563a cropland, all wheat to Buyer—50a CRP—Balance in grass & improvements—NEW LISTING!!
TH - 640a of cropland, grass & CRP w/improvements located S of Levant—excellent for cow/calf or horse operation
TH - 584a sprinkler irrigated cropland N of Oakley on I-70

ADAMS, BROWN, BERAN & BALL, CHARTERED
CERTIFIED PUBLIC ACCOUNTANTS

Full Line Of Professional Services:

- Individual and Business Tax Preparation
- Bookkeeping and Payroll Service
- Financial and Estate Planning

BRIAN C. STAATS, C.P.A.
505 N. Franklin, Suite D • Colby, KS • 785-462-7501

ROUND TRIP TRAVEL
TRAVEL PACKAGES AND CERTIFICATES
MAKE GREAT STOCKING STUFFERS!!

• VACATION SPECIALS •

LAS VEGAS - Air & hotel	From (per adult)	No. of nights
DISNEY WORLD - Hotel, air, park passes	\$505	3
MEXICO - Air & hotel	\$450	3
CARIBBEAN CRUISE & AIR	\$1,050	5
ALASKAN CRUISE & AIR	\$1,500	7
HAWAII - Air & hotel	\$740	3
LONDON, ENGLAND - Air & hotel	\$700	3
AMTRAK EXPLORE AMERICA	\$359	Max. 45

ALL SPECIALS MAY BE FOR SPECIFIC DATES AND ARE SUBJECT TO AVAILABILITY. CALL IN OR FAX YOUR INTERNET QUOTES AND OTHER ADS! WE CAN BOOK THEM FOR YOU WITH LOCAL, CARING SERVICE!!!

140 W. 4th
Colby, KS 67701
1-888-690-7077
462-6999
FAX: 462-3824

WORLDWIDE:
Vacation Packages, Cruises, Tours, Groups, Flights, Hotels, Trains, Cars

Ask about AAA, AARP Senior & Companion, Corporate and Government discounts!

CERSOVSKY INSURANCE
FARM HOME AUTO BUSINESS LIFE CROP

"Customer Service is Our Policy"

CINDY L. CERSOVSKY
Cersovsky Insurance Inc
370 N. Franklin • P.O. Box 310 • Colby KS 67701
Ph. 785-462-7544 Toll Free 888-462-7544

PIT ROAD

We Sell Officially Licensed NASCAR® Products
Apparel • Racing Collectibles • Die Cast

We Specialize in Collectibles **785-462-8002**

1/2 Mile West on Hwy. 24 • Colby, Kansas 67701
e-mail: pitroad3@hotmail.com

 **Warta Chiropractic & Fitness Club**
415 N. Franklin • Colby • 785-462-3350

Dr. A.J. Warta 25 years of experience as a licensed chiropractor

Where you can still get a full-spine adjustment for 1980's fees!

Monday & Wednesday:
2:00-7:00 p.m.
Tuesday, Thursday & Friday:
10:00 a.m.-3:00 p.m.

Science and Nature
Working Together
For You!

BC/BS CAP Provider
Simple Care Provider

FINALLY!
Health Insurance for Individuals, Families and the Self-Employed at **AFFORDABLE** Rates.

Insurance is underwritten by The MEDA Life and Health Insurance Company

800-783-9417

MYATL 0067