

'Heart of Women's Health' luncheon slated

Coronary artery disease has long been thought of as only a man's disease. Women are not viewed as being at risk, yet national statistics support that each year approximately 430,000 women have heart attacks with 250,000 resulting in death.

Marcia McCoy, RN, MSN, Coordinator of the Women's Cardiac Center at the Mid American Heart Institute of Saint Luke's - Shawnee Mission Health System, will be addressing the issue of women and heart disease in her upcoming presentation, "The Heart of Women's Health" on Wednesday, Nov. 13, 2002.

During her presentation, McCoy compares the differences between women and men's cardiovascular system and our vulnerability due to menopause. She will discuss the signs and symptoms of heart disease for women and how women may demonstrate 'atypical' and unique characteristics of heart disease; ones without clear signs and symptoms. And how women need to take control of their own health including questions you need to be asking your health care provider.

"The Heart of Women's Health" will be presented at the Ramada Inn, 1950 South Range. Registration will begin at 11:30 a.m., the meal will be served at noon, and the presentation will be

from 12:30 to 1 p.m. Admission is \$10 per person, which includes lunch

To reserve your place, please send a check for \$10 made out to the Colby Diplomats, sent to the Colby Area Chamber of Commerce, 350 South Range, Colby, Kan., 67701. Registration deadline is Thursday, Nov. 7. If you have any questions contact Betty Albers at (785) 462-3939.

This program is being sponsored by: Colby Chamber of Commerce Diplomats, the American Heart Association, the Northwest Kansas Area Health Education Center, and Wyeth-Ayerst Laboratories.

Arts Association to host concert on Sunday

The Western Plains Arts Association will be hosting Kansas born singer Ann Zimmerman on Sunday, at 3 p.m. in the Cheyenne Theatre in St. Francis.

"She sings the prairie into universal language, with her piano, guitar and that wonderful voice breezing its way into your heart," said Vicky Waldschmidt, Media Correspondent for the Western Plains Arts Association. "Ann examines the adventure, joy, tragedy and comedy of life, especially life on the windy plains."

Zimmerman was the winner of the 2002 Flint Hills Gathering song writing contest, she has taken her Kansas style to New York, Seattle, Boston, Dallas and Alaska and turned each audience into her backup choir. She is known for blending old and new folk

songs, cabaret numbers, and her own creations.

She grew up in Salina singing folk songs with her family to the strums of her mother's autoharp. She has been an elementary teacher, a bank clerk, a plumbing catalog editor, an agricultural intern, a student and graduate of Harvard Law School, president of a Kansas environmental organization, and a long-time legal aid lawyer. She now lives near Salina on a horse-boarding farm and divides her time between legal mediation and music.

Zimmerman was selected to perform for the dedication of the Tallgrass Prairie National Preserve and appears annually at the world-renowned Land Institute near Salina, she also plays festivals, farmers markets, fancy the-

aters, and smoky dives and has shared the stage with many folk musicians.

Admission at the door will be \$6 for adults and \$3 for students or for those with Western Plains Art Association season passes.

Ann Zimmerman is presented by the Kansas Touring Programs and is presented in part by the Kansas Arts Commission, a state agency, and the National Endowment for the Arts, a federal agency.



Senior Progress Center has new director

We have a new director at Senior Progress Center, Donna Schielke. At a special meeting of the senior board on Wednesday, October 15, Donna was chosen for the position. Please welcome her by dropping by the center and introducing yourselves.

The following activities have been scheduled at the center for the week of Oct. 28 through Nov. 1.

Monday: board games at 10 a.m.; cards at 1 p.m.

Tuesday: low impact exercise class at 9:30 a.m.; board games at 10 a.m.; card at 1 p.m.

Wednesday: line dance class taught by Deb Koon at 9:45 a.m.; cards at 1 p.m.;

Thursday: low impact exercise class at 9:30 a.m., board games at 10 a.m., senior bridge at 1 p.m.

Friday: share-a-memory/coffee time at 9:30 a.m., board games at 10 a.m.

Indoor walking, exercise bikes, Cablevision, VCR, snooker, pool, puzzles and cards are available whenever the center is open...and the coffee pot is always on! Planning a reception? You do not need to be a senior to rent the center. Call Donna at 462-2901 for information.

Homestead Nutrition Menus for Oct. 28 to Nov. 1

Monday - macaroni and cheese with little smokies, carrots, breaded tomatoes, bread, peach cup.

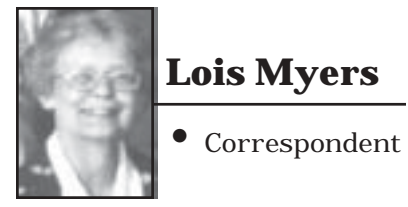
Tuesday - liver and onions, green bean casserole, bread, rosy pears, pudding.

Wednesday - baked chicken, mashed potatoes with gravy, applesauce gelatin, bread, ice cream.

Thursday - chili, crackers, mixed vegetables, cook's choice of fruit, cinnamon roll.

Friday - cook's choice of entree, California blend vegetables, pears, bread, fruit cobbler.

Meal reservations need to be made before noon, 24 hours in advance at 462-2901. Cancellations should be called in as soon as possible. Menus



Lois Myers

• Correspondent

are subject to change.

I've Learned

I've learned—that those who reach their goals too easily, may have aimed too low.

I've learned—that heroes are the people who do what has to be done, when it needs to be done, regardless of

the consequences.

I've learned—that maturity has more to do with what types of experiences you've had and what you've learned from them, and less to do with how many birthdays you've celebrated.

I've learned—that no matter how bad your heart is broken, the world doesn't stop for your grief.

I've learned—that writing and talking can ease emotional pains.

Author Unknown

E-mail local news to: mhawkins@nwkansas.com

HAPPY 70th BIRTHDAY!



At your big seven zero - you remain our mentor and hero!

Love you -

ESTHER, Ty, Ally, Jayson,
TROY, MA'ATA, TAYLOR, TANNER,
Toby, Sylvi, AND TARA

2002

Fall Festival & Gift Fair

Friday, Nov. 1 • 2:00-9:00 p.m.
Saturday, Nov. 2 • 9:00 a.m.-4:00 p.m.

Colby Community Building
Colby, Kansas

- Apples • Honey • Candy & Nuts • Children's Books • Watkins
- Candles • Old Wood Benches & Bird Houses • Pottery
- Angels • Golfing Items • Iron Works • Qwillows • Rugs
- Personalized T-shirts • Cinnamon Roasted Nuts
- "The Satisfiers" • Kettle Korn • Baby Sets
- Gift Baskets (Tastefully Simple Foods) • Scroll saw Items
- Ceiling Tile Frames & Mirrors • Floral & more

~ DOOR PRIZES ~

ABSOLUTE 1,360 ACRES THOMAS COUNTY IRRIGATED AND DRYLAND

AUCTION

TUESDAY, OCTOBER 29, 2002 @ 10:30 AM, CST

SELLERS:
RODNEY & DANETTE RYAN - 1,040 acres
DENNIS & FRANCES RYAN - 160 acres
KATHLEEN STEAVENSON - 80 acres
CHARLES P. CARUSO - 80 acres

AUCTION LOCATION: COMFORT INN CONFERENCE CENTER JUST SOUTH OF I-70 IN COLBY, KANSAS

TRACT #	LEGAL DESCRIPTION	TOTAL ACRES	CROP ACRES	DRY ACRES	SPRINKLER IRRAC	WHEAT ACRES	OATS BASE/YLD	CORN BASE/YLD	GR SORGHUM BASE/YLD	BARLEY BASE/YLD	CERTIFICATE OF APPROPRIATION PERMIT/GPM/ACRE FEET	2001 TAXES
1	NW1/4 OF 27-8-32	160	155.6	35.6	120			120.0/132			#7953/770GPM/369AF	\$1,035.98
2	SW1/4 OF 27-8-32	160	157.5	37.5	120			120.0/132			#7953/425GPM/206AF	\$979.00
3	SE1/4 OF 26-8-32	160	155.3	42.3	113			113/132			#7953/480GPM/225AF	\$734.26
4	SE1/4 OF 20-8-32	160	160.5			85.0/39	22.8/130	4.5/77		9.5/37	#7806/100GPM/67AF (SUBMERSIBLE WELL)	\$429.90
5	N2-1/4 OF 27-8-32	80	85.4			42.0/39	1.6/41	11.5/132	2.3/77		#7806/126GPM/146AF	\$228.90
6	N2 OF 35-8-32, less a 1 acre windbreak tract	320	308.0			163.0/39	43.8/130	8.7/77				\$827.31
7	SE1/4 OF 35-8-32	160	158.5			85.0/39	22.8/130	4.5/77				\$413.65
8	SW1/4 OF 24-8-32	160	158.8			85.2/39	22.8/130	4.5/77				\$424.82

MANNER OF SALE: This real estate will be offered as a "MULTI-PARCEL" auction in individual tracts and in combinations of tracts. It will be sold in the manner that produces the highest aggregate bid. There will be OPEN BIDDING on all tracts and combinations of tracts during the auction as determined by the auctioneer. Bids on tracts, tract combinations and the total property may complete. Auction procedure and increments of bidding are at the discretion of the Auctioneer.

TERMS: 10% down day of sale with balance upon approval of title, on or before November 29, 2002. Personal and corporate checks are acceptable for the down payment with the final payment to be in certified funds. Bidding is not contingent upon financing. Financing, if necessary, needs to be arranged and approved prior to the auction. Announcements made day of sale take precedence over printed material.

ACCEPTANCE OF BIDS: Each successful bidder will be required to enter into a Farm & Ranch Contract to Buy and Sell Real Estate immediately following the auction. Copies of these contracts will be available from the auctioneer prior to the sale.

EVIDENCE OF TITLE: Sellers will provide title insurance to the Buyer(s) in the amount of the purchase price, with the premium to be paid one-half by the Sellers and one-half by the Buyer(s). Title evidence will be provided on sale day. Buyer(s) may close as soon as closing documents are prepared - no later than November 29, 2002.

ACREAGES: Acreage figures are considered to be approximate and are from reliable sources, based on (USDA) FSA figures. All FSA information is subject to change. FSA acres may not be the same as deeded acres.

FSA PAYMENTS: Sellers shall retain 100% of all payments associated with the 2002 crop year and Buyer shall receive 100% of all payments associated with the 2003 and future crop years.

POSSESSION & CROPS: Possession shall be day of closing. Buyer shall receive 2/3rds of the 2003 wheat crop.

REAL ESTATE TAXES: Sellers shall pay taxes for all of 2002 and prior years. Taxes for 2003 shall be paid by the Buyer.

MINERAL RIGHTS: Seller shall retain 1/2 of the mineral rights for a period of 10 years, with the participating in lease monies, bonuses and delay rentals, but fully participating in royalties, EXCEPT on TRACT 4 (SE1/4 of 20-8-32) which is subject to a prior reservation of record, and the Buyer shall receive the Seller's 1/2 mineral right interest on said quarter.

INSPECTIONS: Each potential bidder is responsible for conducting their own independent inspections & due diligence concerning pertinent facts about the property. Neither Sellers nor Farm & Ranch Realty, Inc. are making any warranties about the property, either expressed or implied.

EASEMENTS: This sale is subject to all rights-of-way and easements, whether recorded or not, and to any oil and gas leases of record.

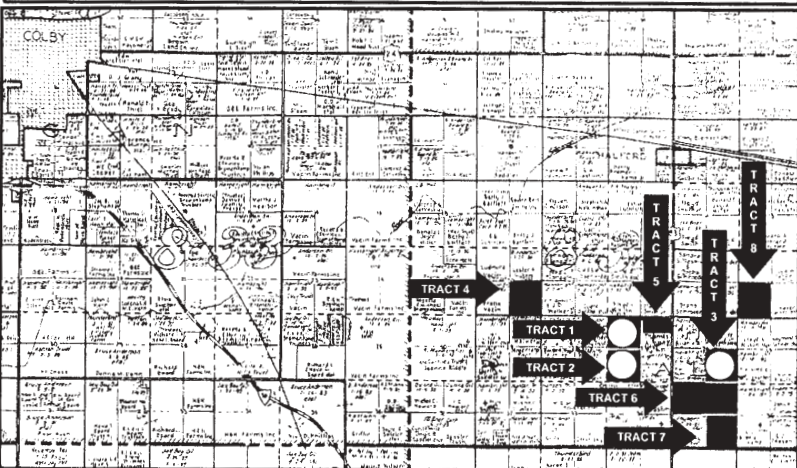
AGENCY: Farm & Ranch Realty, Inc. and its representatives are the Exclusive Agents of the Sellers.

ESCROW: Gordon Company will serve as escrow agent and closing agent for these transactions. There will be a closing fee of \$250.00 per transaction payable to The Gordon Company which shall be paid one-half by the Sellers and one-half by the Buyer(s).

SURVEY: Seller will provide a survey at their expense on Tract 6 for an approximately 1 acre tract where the windbreak is located.



IRRIGATION INFORMATION:				
	SPRINKLER	MOTOR	GPM	ACRE FEET
TRACT 1	1996 Valley w/drops	Ford 460 w/generator (Nat Gas)	770	369
TRACT 2	1981 Reinke w/drops (Valley Electric Conversion)	Ford 460 w/generator Chrysler 318 (Nat Gas)	425	206
TRACT 3	1975 Reinke w/drops	IHC 392 w/generator (NG) 318 10HP Submersible	480	225



AUCTIONEER'S NOTE: Rodney is semi-retiring from farming one of the PREMIER farms in Thomas County, Kansas. This auction offers the purchasers a choice of irrigated land, dryland or a combination of both, with the opportunity of buying it all or just one parcel.

Call Ron for a tour of this excellent farm TODAY!!

Visit our Website at: www.farmandranchrealty.com

FARM & RANCH REALTY, INC.

RON EVANS, LISTING AGENT
P.O. Box 947 • 1420 W. 4th
Colby, KS 67701 • Telephone (785) 462-3904
DONALD L. HAZLETT, BROKER/AUCTIONEER

"When You List With Farm & Ranch, It's As Good As Sold"

Colby High School Scholarships

Voice of Democracy Scholarship Contest: open to students in grades 9-12, \$25,000 first-place scholarship. Deadline: Nov. 1, 2002. More information can be found in the Career Center.

2003 Discover Card Tribute Award Scholarship: Recognizing Excellence in High School Juniors. Deadline: Jan. 10, 2003.

Miss Kansas Teenager Scholarship Competition: Delegates must be at least 13 and not over 19. Deadline: Oct. 31, 2002.

Northwest Kansas Honor's Scholarship: Recognizing Excellence in High School Juniors. Deadline: Jan. 10, 2003.

Wichita State University - Barton School Scholarship: Scholarship to attend the Barton School of Business at WSU for \$44,000. Scholarship competition will be held on Nov. 8, 2002. To be eligible, you must have at GPA of 3.5, ACT score of 24 or better, admitted to WSU no later than Oct. 2, 2002 and have declared a business major.

Jabara Scholarship for business students majoring in Entrepreneurship: Two \$20,000 scholarships (\$5,000 per year) will be awarded to outstanding students interested in pursuing a degree in business majoring in entrepreneurship at WSU.

Target Scholarship: visit www.target.com or any Target location for an application. Applications must be returned by Nov. 1, 2002.

Fort Hays State University: Scholarship priority deadline is Dec. 15, 2002. Applications can be picked up in the Career Center.

Coca-Cola Scholars Foundation: Apply online at www.coca-colascholars.org, or pick up an application in the Career Center. Deadline: Oct. 31, 2002.

All Roads Lead To....



611 S. Freeman

785-672-3102

118 W. 2nd

785-672-3238

•• USED CARS ••

2002 Dodge Grand Caravan Sport	Autumnwood, 18,380, Cd, PW, PL, TW
2002 Chrysler Town & Country LX	Silver, 15,683, PW, PL, TW, CR
2002 Buick Century Custom	4 door, silver, 17,089, CD, PS, PW, PL
2002 Chevy Venture LS Extended	Tan, 19,940, PS, PW, PL, CD
2001 Dodge Stratus RT	2 door, black, 32,963, CD, PW, PL, TW
2001 Chevy Astro Van AWD	Teal blue, 23,777, AW, CD, CT, RAC
2001 Olds Alero LG	4 door, white, 51,174, CD, PW, PL, TW
2001 Chevy Malibu	4 door, gray, 34,061, PW, PL, TW, CR
2001 Dodge Intrepid SE	4 door, white, 23,265, PW, PL, CD, TW
2001 Chrysler Sebring LX	4 door, blue, 19,507, CD, PW, PL, TW
2001 Chevy Impala	4 dr., maroon, 44,350, PW, PL, TW, CR
2001 Dodge Intrepid	4 dr., silver, 31,169, PW, PL, TW, CR
2000 Ford Windstar LX FWD	Gold, 52,657, CD, CT, PW, PL
2000 Plymouth Breeze	4 dr., gold, 32,147, CD, PW, PL, TW
1999 Plymouth Grand Voyager SE	White, 89,357, CT, PW, PL, TW
1999 Chrysler Concorde	4 door, dk. green, 74,354, PS, PW, PL, TW
1999 Pontiac Firebird	2 dr., pewter, 57,917, CD, PS, PW, PL
1998 Mercury Mystique	4 door, dk. green, 59,175, CT, PW, PL, TW
1998 Pontiac Firebird T-Tops	White, 66,905, CD, AW, PW, PL
1998 Chrysler Town & Country LXI	White, 135,865, CD, CT, PW, PL
1998 Ford Crown Victoria LX	4 dr., white, 54,566, CT, PW, PL, TW
1997 Chrysler LHS	4 door, red, 95,006, PS, CR, TW, PW
1997 Chrysler Town & Country Minivan	green, 89,032, PS, PL, TW, PW
1996 Dodge Grand Caravan LE	Dark red, 113,923, AW, CT, PW, PL
1996 Ford Windstar Minivan	Dark red, 113,393, CT, PW, PL, TW
1996 Chevy Beretta Z-26	Dk. red, 63,107, CD, TW, CR
1996 Chrysler Town & Country LXI	Lt. Iris, 94,984, CD, AW, CD, CT, PW
1996 Chevy Camaro	2 dr., T-tops, red, 95,003, CD, PS, PW, PL
1995 Olds 88 LS	4 door, gold, 88,570, CT, PW, PL, TW
1995 Plymouth Voyager	7 passenger, gray, 90,000, PW, PL, TW, CR
1995 Chrysler LHS	4 dr., gray, 100,193, CD, PW, PL, TW
1995 GMC Conversion Van	White, 121,465, TW, PS, PW, PL
1995 Dodge B-250 Conversion	Brown, 95,923, PW, PL, TV, VHS
1995 Buick Regal	2 door, silver, 80,594, CT, PW, PL, TW
1994 Mercury Sable GS	White, 60,923, PS, PW, PL, TW
1993 Cadillac Seville	4 door, blue, 114,352, PW, PL, TW, CR
1993 Pontiac Grand AM SE	4 door, blue, 118,000, CT, PL, TW, CR
1992 Chevy G-Van Conversion	Gray, 86,780, CT, PW, PL, TW
1992 Mazda 929	4 dr., black, 102,615, CT, PW, PL, TW
1992 Dodge Dynasty	4 dr., Lt. Blue, 102,429, CT, PW, PL, TW
1990 Dodge Spirit	4 dr., brown, 143,911, TW, CR
1989 Ford Thunderbird Supercoupe	White, PW, PL, CT, 128,872, 5M
1989 Plymouth Grand Voyager Minivan	Blue, 126,143, CT, PL, TW, CR
1989 Chrysler LeBaron	2 dr., White/Red, 177,282
1983 Ford Van	Copper, 153,031
1983 Audi 5000 Diesel	4 door, gold, 149,000

•• USED TRUCKS ••

2002 Dodge Dakota 4x4 Club Cab	179, CT, TW, CR, PL
2001 Dodge 1/2 t. Quad Cab	Blue, 38,355, TW, CR, PW, PL
2001 Chevy Silverado Z-71 Ext. Cab 4x4	Red, 37,512, CD, PW, PL, TW
2001 Chevy Blazer LT	4 door, red, 19,011, CD, RR, PW, PL
2001 Dodge 3/4 t. 4x4 Quad Cab	White, 18,322, CD, CT, PS, PW
2000 Chevy 1/2 t. Ext. Cab 4x4	White, 59,931, CD, PW, PL, TW
2000 Dodge Durango 4x4 S/B	Silver, 46,648, KE, PL, PW, CR
2000 Chevy Ext. Cab 1/2 t. 4x4	Red/gray, 73,168, CD, PW, PL, TW
2000 Dodge Dakota Sport quad Cab	White, 53,865, Cd, CT, PS, PW
2000 Chevy 3/4 t. Ext. Cab 4x4	Red/silver, 58,102, CD, PW, PL, TW
2000 Chevy Silverado 1/2 t. Reg. Cab 4x4	White, 49,425, KE, PL, PW, CR
2000 Chevy 1/2 t. 4x4 Ext. Cab	Red/silver, 44,955, PW, PL, TW, CR
2000 GMC Sierra 1/2 t. Z71 Quad 4x4	Red, 71,325, CD, CT, KE, PS
1999 GMC Yukon 4x4	4 door, silver, 83,668, CT, PW, PL, TW
1999 Chevy 1/2 t. 2WD Reg. Cab	Pewter, 72,236, CD, PW, PL, TW
1999 Dodge 3/4 t. Quad Cab 4x4	Black, 82,473, 5M, CT, PW, PL
1999 Dodge Duallty Quad Cab	Driftwood, 55,450, PW, PL, TW, CR
1999 Chevy 1 t. 4x4 Crew Cab	White, 49,246, CD, CT, KE, PW
1999 Dodge 3/4 t. 4x4 Quad Cab	Red/silver, 29,742, PW, PL, TW, CR
1998 Suzuki Sidekick Convert. 4x4	Dk. green, 91,194, CT
1998 Dodge Quad Cab SLT 4x4	Blue, 135,854, PS, PW, PL, TW
1998 Ford Explorer Eddie Bauer	Copper, 54,739, AW, RAC, PS, PW
1998 Chevy 1/2 t. Reg. Cab 4x4	White, 93,634, PW, PL, TW, CR
1998 Dodge 3/4 t. 4x4 Reg. Cab	Red/drift, 65,688, PW, PL, TW, CR
1998 Dodge 3/4 t. 4x4 Ext. Cab	White, 81,264, CT, TW, CR
1997 Chevy Suburban LT 4x4	Cherry Ice, 89,921, CD, CT, PW, PL
1997 Ford 1/2 ton Ext. Cab 4x4	White, 90,029, PW, PL, TW, CR
1997 Ford 3/4 t. Ext. Cab 4x4	Tan, 86,000, CT, PW, PL, TW
1997 Dodge 3/4 t. Reg. Cab SLT	Diesel, white, 95,174, PW, PL, TW, CR
1997 Chevy Suburban 4x4	Green, 89,745, CD, PW, PL, TW
1996 GMC 1/2 t. 2 WD SLT	Blue/white, 81,643, PS, PL, PW, CT
1996 Ford Ranger Ext. Cab 4x4	Blue/silver, 44,616, PW, PL, TW, CR
1995 GMC 3/4 t. Ext. Cab 4x4	Blue/gold, 82,823, CT, PW, PL, TW
1995 Chevy 1/2 t. 4x4 Ext. Cab	Blue/Silver, 107,875, CT, PW, PL, TW
1994 GMC 1/2 t. 2 WD SLE Ext. Cab SWB	Green, 118,322, TW, CR
1994 Chevy 1/2 t. Ext. Cab 2WD	Maroon/silver, 112,353, PW, PL, TW, CR