

US Postage Paid
STANDARD RATE

POSTAL
CUSTOMER

We reach more than 42,000 readers each week!

The Country Advocate

The 900-pound gorilla of northwest Kansas advertising!

Week of December 31, 2014

A common section produced by/supplement to The Oberlin Herald, Colby Free Press, The Goodland Star-News, Bird City Times, The Saint Francis Herald, The Norton Telegram and The Western Times



Cover Your Acres

January 20 and 21, 2015



Winter Conference The Gateway in Oberlin, KS

Presented by Kansas State University and Northwest Kansas Crop Residue Alliance

Room 1	Room 2	Room 3	Room 4
7:45 - 8:15 Registration			
8:15 - 8:20 Welcome			
8:30 - 9:20 Soil Microbiology and Carbon ¹ (F. Calderon)	Environmental Effects on Weed Control ¹ (D. Peterson)	Farm Bill Decisions ¹ (D. O'Brien / M. Ward)	Maximizing w/Next Gen Systems (Cargill AgHorizons) (I)
9:30 - 10:20 High Plains Cover Crop Research ¹ (D. Nielsen)	Management of Drought Tolerant Corn ¹ (A. Schlegel)	Sampling 101 ¹ (NW Ag Agents)	Managing the Precision Data Menace (Simplor) (I)
10:30 - 10:50 View Exhibits			
10:50 - 12:40 Follow/Row-Crop Weed Control ² (C. Thompson)	Wheat Yield and Development ¹ (G. McMaster)	High Plains Cover Crop Research ¹ (D. Nielsen)	Sunflower Production Update (Nat'l Sunflower Assoc) (I)
11:50 - 12:40 Phosphorus Management ¹ (D. Ruiz-Diaz)	Soil Microbiology and Carbon (F. Calderon)	Lunch	
12:50 - 1:40 Environmental Effects on Weed Control ¹ (D. Peterson)	Management of Drought Tolerant Corn ¹ (A. Schlegel)		
1:50 - 2:40 Wheat Yield and Development ¹ (G. McMaster)	Ogallala Overview ¹ (B. Wilson)	Phosphorus Management ¹ (D. Ruiz-Diaz)	High Perf. Test with Variable Rate Irrig (Mousunto) (I)
2:40 - 3:10 View Exhibits			
3:10 - 4:00 Producer Discussion Panel	Follow/Row-Crop Weed Control ² (C. Thompson)	Sampling 101 ¹ (NW Ag Agents)	Follow, Wheat, Row-Crop Weed Mgmt. (Boysen CS) (I)
4:10 - 5:00 Ogallala Overview ¹ (B. Wilson)	Farm Bill Decisions ¹ (D. O'Brien / M. Ward)	Delivering Quality Solutions (Frontier Ag) (I)	Feeding Tough Weeds (Sims Fertilizer) (I)

Like to Attend?

Early-Bird Registrations

Due January 14.

Online:

www.northwest.ksu.edu/CoverYourAcres

Mail in:

Circle when you would like to attend.

Tuesday, Jan 20 Cost \$10.00 Wednesday, Jan 21 Cost \$35.00

Both days - Jan 20 & 21 Cost \$50.00

Name: _____

Address: _____

City, State Zip: _____

Phone: _____

Email: _____

Please include information for all attending.

After January 14

\$50.00 per day

Mail registrations to:

Kansas State University
NW Area Extension Office
PO Box 786
Colby, KS 67701

For questions, call (785) 462-6281.

Program will be held regardless of weather. No refunds will be given.

Kansas State University is an equal opportunity employer and provider.

Platinum Sponsors

Bayer Crop Science
Frontier Ag
Hoxie Implement
Lang Diesel Inc.
Monsanto
National Sunflower Assn.

PacLeader Technology
Plains Equipment Group
Simplor Grower Solutions
Sims Fertilizer
Simpson Farm Enterprises

Tuesday: Bull session begins at 5:00.

(I) indicate industry sessions

¹ Indicate Certified Crop Advisor CEUs applied for.

² Indicate Commercial Applicator CEUs applied for

www.northwest.ksu.edu/CoverYourAcres

Let the **Gorilla** help sell your stuff



If you're planning a garage sale, be sure it's in **The Country Advocate**

Invite the 900-pound Gorilla to help with your garage sale. You'll have more customers, sell more stuff and make more money. That means more in your pockets at the end of the day, and less junk to haul off to the dump.

How does it work? Simple. While the paper reaches most families in the town, The Country Advocate goes all over northwest Kansas. It reaches 41,860 readers in 11 Kansas counties, plus parts of northeastern Colorado and southwest Nebraska.

That's why it's the 900-pound Gorilla of Northwest Kansas Advertising, reaching more homes and more people than any other publication, broadcast station, cable system, Internet page or advertising medium.

Reader after reader has tried The Advocate for their advertising. The results?

Stuff sells. People drive for miles to find a good sale. They don't want to walk away empty-handed. The Gorilla works.

Your newspaper makes it easy for you to be in The Advocate. Just call or stop by and place your ad. You'll be surprised how easy it is, and how affordable. You'll be surprised — and happy — when your phone starts to ring or people show up at your door.

But call today. Deadline for The Advocate is noon Friday, ONE WEEK BEFORE a weekend sale. Sure, you can get an ad in the paper later, but it won't be the same. Call the Gorilla.



**COLBY
FREE PRESS**

155 W. Fifth Colby, Kan. 67701
(785) 462-3963

**THE NORTON
TELEGRAM**

215 S. Kansas, Norton, Kan. 67654
(785) 877-3361



THE OBERLIN HERALD

170 S. Penn Ave., Oberlin, Kan. 67749
(785) 475-2206

**The
Goodland Star-News**

1205 Main, Goodland, Kan. 67735
(785) 899-2338

Bird City Times

Box 220, Bird City, Kan. 67731
(785) 734-2659

The Saint Francis Herald

Box 1050, St. Francis, Kan. 67756
(785) 332-3162

AUCTIONS/AUCTION SERVICE

Brown's Consignment Auction Sunday, January 4, 10 a.m. Hoxie 4-H Building. Small Estate - Old coins, wide selection of items booked, saleable items welcome February 1st, March 1st, book early for a spot 785-675-3767 Mickey Brown. C 12/31

TAKING BIDS

LAND SALE: Jack and Mildred Laughlin farm land (8 miles south of Ruleton, KS.. Approximately 218 acres dryland and 216 acres pasture.) Sale information: Sale by sealed bids only, which must be received by JANUARY 14, 2015 at 5 p.m. MT. Pick up bid forms and return bids all at offices of: Vignery & Mason, 214 E. 10th (PO Box 767), Goodland, KS 67735. Phone: (785) 890-6588. G 12/31-1/14

NOTICES

Divorce Recovery for Women (for women in all stages of divorce) Mondays, January 12, 2015 through March 16, 2015. 6:45 p.m. - 8:15 p.m. Sunflower Bank of Colby (basement). 10 weeks of support and healing. Sad, angry, confused? We CAN help! 785-675-8606 lynetteball@yahoo.com. C 12/31

NEW YEAR'S PARTY- At Back Roads Bar & Grill, Lenora. Wednesday, December 31, 9:00 p.m. to 12:30 a.m. Come enjoy good music, food, fun and friends to ring in 2015! Music by The Three Jacks. N 12/31

CARPET CLEANING: 3 Room Special - \$149.95! Dry-Foam safe and Green Seal approved. Serving NWKS mileage free since 1987. Call today: A+ Cleaners (785) 538-2526 or (785) 443-5400, Johnene Cheney. N 12/30

Beginning January 6, The

Razor's Edge Barber Shop will be open with the same hours. N 1/7

Help for Abused women and children. Open 24 hours a day, seven days a week. Call Northwest Kansas Shelter, 800-794-4624. SFH tfn

HELP WANTED

Langer Industrial seeks a safe and professional driver, clean MVR, competitive wages, home daily. 785-586-2208. C 12/24-12/31

Employment Opportunity: Colby 24/7 Travel Store is currently accepting applications for cashier and assistant manager. Compensation includes \$9.00 starting wage plus incentives including BCBS health and life insurance, 401K, and paid vacation. Apply online at www.24-7-stores.com or apply in person at Colby 24/7 Travel Store, 1980 S. Range. C 12/24-12/31

Full-Time - CMA (Certified Medication Aide) and CNA for Night shift. Competitive wages, Shift Differential for night shift, AFLAC insurance offered, Call Bonus pay also. Apply at Fairview Estates

Retirement Community. 1630 Sewell Ave, Colby, or call Gary at 462-2154, EOE. C 12/24-12/31

Full-time electrician for full range electrical contractor (contract work, service work, industrial, commercial, farm, residential). Local company, no overnight travel. Must have valid driver's license. Apply at: Bickner Electric, 1205 S. Country Club, Colby. 785-462-6692. C 12/24-12/31

Drivers: Owner Ops/ Company. Offering \$10,000 Team Bonus! Excellent money and benefits. Dedicated lanes available. Great miles weekly. CDL-A w/Hazmat. 855-493-9921. G 12/24-12/31

TIMMERMAN FEEDING is looking to hire a secretary. Looking to be part of a growing organization, don't pass up this opportunity. Very competitive salary based on experience and qualifications. Benefits include but not limited to: vacation, profit sharing. Contact Jason Timmerman at (785) 462-3947, or send resume to 1762 US 83, Colby, KS 67701. G 12/24-12/31

Part-time carpet cleaner needed at Magic Carpet

Cleaning in Goodland. Call (785) 899-6422 or (785) 821-0062. G 12/24-12/31

Brewster USD 314 is currently accepting applications for the following full-time position: Morning and Afternoon Route Bus Driver/Custodian Combination. Applications may be downloaded from the District's website: www.usd314.k12.ks.us or by calling the District at 785-694-2236. Resumes may be emailed to jmillis@usd314.k12.ks.us. C 12/17-12/24

Driver Wanted for Water Truck. Need CDL A with X endorsement. Based in Colby. Start at \$18 plus medical. Call Garret 620-255-6813. C 12/17-12/31

HELP WANTED - The National Association of Agriculture needs survey interviewers in Northwest

Kansas. Must be a people person capable of working outdoors with some physical activity. Clean driving record and reliable transportation is a must. Agricultural background would be helpful. Contact: Dale (785) 821-2600. A Fair Opportunity Employer. O 12/17/14 & 12/31/14

F/T Class A CDL Drivers must have clean MVR, at least 2 yr. OTR experience, DOT with alcohol and drug testing, Hopper experience a plus, home weekly, EOE. Call 785-462-0087. C 11/3-4/30

Decatur County Road & Bridge is taking applications for full-time employment. Employee will be subject to random drug and alcohol testing and will be required to obtain a CDL. Applications available at Engineer's Office. Call 785-475-8111. Decatur County is an Equal Opportunity Employer. O 44tf

The Northwest Kansas Educational Service Center is advertising for school secretarial support. This is a 30 hour week position through the school year. **Qualifications:** High School diploma or equivalent. This position requires but not limited to general office duties with computer skills. Applications are available at www.nkesc.org or call 785-672-3125. For position related questions, contact Kathy Kersenbrock Ostmeyer extension 111. Applications will be accepted until the position is filled. NKESC is an EOE.

Apply Now

ACCOUNTS PAYABLE CLERK

DUTIES: Daily Accounts Payable posting and processing; also daily Accounts Receivable posting and daily deposits. F-T, 7:30-4 M-F. Benefits available after successful completion of 90-day trial period. Full description: GoodlandRegional.com.

TO QUALIFY: HS Diploma/GED. Prefer accounting degree/tech school equiv. Prior accounts payable and direct payroll experience preferred. TB skin test, Physical, D/A screen. Physical Assessment required.

BENEFITS: Health/Dental Insurance, Life/AD&D, LTC/STC. Pension with Employer Match after 90 days, PTO, AFLAC.

TO APPLY: Visit www.goodlandregional.com. Resumes: grmc@gmedctr.org, fax to (785) 890-4045, or mail to GRMC, Attn: Human Resources.

Goodland Regional Medical Center is an EOE/ M-F/W/H employer. 220 W. 2nd St. Goodland KS, 67735 (785) 890-3625

Apply Now

SURGERY TECH - TEMP

DUTIES: Assist surgical department staff with surgical procedures, surgical call. Perform a variety of technical duties within the realm of surgical services at GRMC. Benefits available after successful completion of 90-day trial period. Full description: GoodlandRegional.com.

TO QUALIFY: HS Diploma/Voc. training. Prefer Surgical Technologist certifi. Prior surgical experience preferred, but will train qualified candidate. TB skin test, Physical, D/A screen. Physical Assessment required.

BENEFITS: Health/Dental Insurance, Life/AD&D, LTC/STC. Pension with Employer Match after 90 days, PTO, AFLAC.

TO APPLY: Visit www.goodlandregional.com. Resumes: grmc@gmedctr.org, fax to (785) 890-4045, or mail to GRMC, Attn: Human Resources.

Goodland Regional Medical Center is an EOE/ M-F/W/H employer. 220 W. 2nd St. Goodland KS, 67735 (785) 890-3625

Apply Now

HOUSEKEEPER

DUTIES/HOURS: General cleaning tasks in patient rooms, ER, administrative offices, other departments. Floor care experience a plus. Hours: 6:30AM-2:30PM or 12PM-8PM M-F, alternate weekends as needed to assure coverage.

TO QUALIFY: H.S. grad/GED. Experience in field preferred. Able to work with minimal supervision, cooperative with co-workers and hospital staff. TB skin test, Physical, D/A screen, Physical Assessment required.

BENEFITS: Health/Dental Insurance, Life/AD&D, LTC/STC. Pension with Employer Match after 90 days, PTO, AFLAC. Shift Differential, time and 1/2 for OT/holidays.

TO APPLY: Visit www.goodlandregional.com. Resumes: grmc@gmedctr.org, fax to (785) 890-4045, or mail to GRMC, Attn: Human Resources.

Goodland Regional Medical Center is an EOE/ M-F/W/H employer. 220 W. 2nd St. Goodland KS, 67735 (785) 890-3625

Apply Now

PATIENT SERVICES REPRESENTATIVE

DUTIES/HOURS: Serves as a liaison between patient and hospital staff; assists patients in scheduling appointments, explaining insurance procedures.

TO QUALIFY: College or secondary training in an area related to communications, social sciences, or nursing is helpful. Previous experience in hospital environment and knowledge of patient care and patient problems most helpful. Must display a positive attitude and disposition; ability to empathize with patients and families; problem solve, organize, and provide solutions in stressful situations; manage multiple needs or requests at the same time and achieve best possible results; interact effectively with patients, families, hospital personnel, and medical staff.

TO APPLY: Visit www.goodlandregional.com. Resumes: grmc@gmedctr.org, fax to (785) 890-4045, or mail to GRMC, Attn: Human Resources.

Goodland Regional Medical Center is an EOE/ M-F/W/H employer. 220 W. 2nd St. Goodland KS, 67735 (785) 890-3625

Red River COMMODITIES

Night Shift Mill Operator

We are looking for a hardworking, dependable individual who must be mechanically inclined to work on the night shift in a sunflower processing facility. Drug testing is required.

PAY STARTING AT \$14.00 / Hour

Please apply in person at: 1320 E. College Dr. in Colby, KS

CNA, CMA, LPN & RN'S NEEDED

Good Samaritan Society SHERMAN COUNTY

Good Samaritan Society in Goodland, KS, is now accepting applications for all positions. There include: CNA, CMA, LPN and RN. Applicant must be honest and reliable. Structured attendance policy is enforced. For more information please contact Shaunda Mann DNS at (785) 890-7517, or apply online at: good-sam.com. EOE.

Time for a New Career?

The Goodland Star-News is looking for a **FULL TIME ADVERTISING EXECUTIVE** to join our team selling advertising for Nor'West Newspapers. The work week would be 40 hours. Computer skills are helpful but not required. Must have good communication skills, excellent customer service skills with attention to detail, and enjoy a fast paced atmosphere.

Send a letter and resume to: Kevin Bottrell, Editor 1205 Main Avenue Goodland, KS 67735 Email: kbottrell@nwkansas.com or apply in person. No calls please.

The Goodland Star-News

FOLEY INDUSTRIES

Now Hiring Colby Parts Sales Rep!!

Foley Industries offers a pay and benefits package that is not only competitive but underscores our key principle; **people are our key to success in the marketplace.** We reward exceptional performance and providing a challenging, exciting environment and advancement opportunities.

Parts Sales Rep (Colby Location) - seeking candidate with previous parts experience and strong customer service.

- Project a professional company image
- Answer phones and respond to customer requests
- Excellent customer relations skills
- Exhibit a high degree of proficiency in inspecting and returning new parts and reman cores.
- Maintain adeptness in reading and interpreting parts materials - written and electronic.
- Disassemble and assemble hydraulic and air hoses.
- Load/unload freight from trucks when needed, and assist with processing of stock orders and back order freight.
- Audit parts stock inventory as needed or required to maintain inventory accuracy.
- Participate in rotation of after-hour call out and weekend work schedules.

We'd like to talk to you!
Apply online @ www.foleyeq.com EOE

BTI BTI-Hoxie

Our temporary building is up and business is underway!

For all your John Deere parts and service needs, contact BTI-Hoxie at (785) 675-8208.

Interested in working for us? We currently are seeking full-time Service Technicians and Parts Counter Persons.

Service Technician—Responsibilities include, but are not limited to, working on equipment, completing necessary paperwork, and maintaining excellent customer service. Must have 2+ years of experience working on agricultural equipment. Education in Diesel Mechanics preferred. Wages are competitive for the experience level—up to \$26/hour plus benefits and bonuses.

Parts Counter Person—Responsibilities include, but are not limited to, waiting on customers, charging out merchandise, and maintaining shelf stock. Must be able to work in a team environment and should have 2+ years experience and knowledge of John Deere parts and equipment. Competitive wages plus benefits and bonuses.

BTI is an EEO. For more information, please contact Emily at (800) 334-4823 or apply online at www.btiequip.com

Rawlins County EMS is now accepting full-time and part-time applications for EMT's, AEMT's and Paramedics. Applicants should be motivated, comfortable taking care of patients for long transport times and dedicated individuals to work in a rural setting. Applicants must possess a valid Kansas Driver's License and be a certified Kansas EMT, AEMT or Paramedic. AEMT and/or Paramedic must have ACLS, and all positions require a CPR certification. No residency is required. Rawlins County EMS is a Type IIA service and is the primary 911 service. Rawlins County is located in North West Kansas at the intersection of Highway 25 and Highway 36. Rawlins County offers competitive pay with a

great benefits package. Applications are available to pick-up, email and/or fax. Submit an application or a resume to Rawlins County EMS Office P.O. Box 183, Atwood, Kansas 67730, Fax: 785-626-9486, or email: racoems@gmail.com. For more information please call Phone: 785-626-8052 or Cell: 785-626-6001. G 9/17-tfn

Help Wanted: correspondent for Rexford. Send news via e-mail once a week. Paid by inch and receive free subscription to The Oberlin Herald. O 1/30 tfn

PLUMBERS, HVAC installers and technicians needed for residential, service and commercial

work. Excellent pay and benefits. 785-628-8088, Hays, KS.

N tfn

PSI Transport is looking for livestock hauler; owner/operators to pull our trailers and/or company drivers. Newer equipment and excellent benefit package. We primarily stay within the MidWest. To visit about our opportunities give us a call M-F at (785) 675-3881 or (913) 533-2478.

N tfn

Assistant Library Director Position. Due to the

retirement of the Norton Public Library Director in 2015, we are seeking applicants for the position of Assistant Director. This is a fulltime position with benefits including KPERS retirement. The Assistant Director will be expected to learn all procedures, policies, and responsibilities involved with the operation of the Library. With acceptable success as Assistant Director, promotion to Director by the Library Board of Trustees will be expected to occur in 2015, with the retirement of the current Director. For application, information,

and further job description contact Mary Luehrs, Director, at 785-877-2481, or at the Norton Public Library, 1 Washington Square, Norton, KS. Applicant and resumes will be accepted until position is filled. The Norton Public Library is an Equal Opportunity Employer. N 1/7

Prairie Valley Feeders in Longland, Kansas is looking for a reliable, motivated individual to join our feedlot team. We offer excellent pay, insurance, and many bonus opportunities. Experience is preferred. Please call Kenzie

at (785) 202-1718 to apply. All inquiries will be kept confidential.

N 1/7

Valley Hope Association is seeking a Commercial Insurance Administrator to work as a part of our Client Services team. The position's primary duties are checking patient insurance benefits as well as filing and collecting patients' insurance. Excellent benefit package with a starting salary up to \$10.51/hr DOE. Email resume to employment@valleyhope.org. EOE.

N 12/24

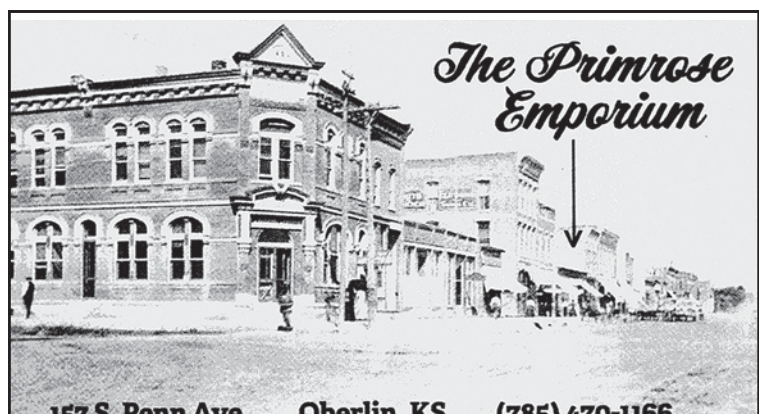
New Construction Houses for Sale



1536 Sq Ft + 2 car garage + full basement
3 bedroom, 2 bathroom, large front porch
(Located south of Dillons) in Davis Addition, Colby, KS.

Houses can be purchased with either finished interior or unfinished interior (complete it yourself and save \$\$\$)

Call Wes at BAINTEK CONSTRUCTION at (785)675-8695



The Primrose Emporium

157 S. Penn Ave. Oberlin, KS (785) 470-1166

The Primrose Emporium
Thank you for your support in 2014!
Wishing you a healthy New Year.

New Winter hours: Tues. - Fri. 10 a.m. - 5p.m.
Sat. 10 a.m. - 3p.m.

WOOFER PUMP & WELL INC.
1024 Oak Ave.
Hoxie, KS 67740

Office Phone 785/ 675-3991 Fax: 785/ 675-3990
Shop Phone 785/ 675-3023 E-mail: woofpw@ruraltel.net

Irrigation, Domestic, Geothermal & Environmental Services

- Irrigation Pump Repair
- Irrigation Well Drilling
- Domestic Well Drilling & Repair
- Environmental Drilling
- Windmill Repair
- Solar Systems
- Geothermal Pump Systems



For all your irrigation needs call:
Lance Shepard (785) 675-8376

The Country Advocate Service Directory

KANSAS Insurance INC

Formerly **THOMAS County INSURANCE AGENCY**



Dennis Tubbs
dtubbs@kansasins.com

490 N. Franklin
785-462-3939

- Home & Auto
- Farm & Crop
- Business Insurance
- Boat, Motorcycle, RV

Nationwide Agribusiness
On Your Side™

www.kansasins.com

Cavenee Audiology LLC:
Hearing Services



Call Today to Schedule:

- A Hearing Exam
- A Hearing Aid Consult & Free Hearing Aid Demo (devices limited)

Rachael Cavenee Au. D.
107 West Greeley Ave. Tribune, KS
(620) 376-2080

Tuesdays & Thursdays
9:00 am-4:00pm MDT

"...dedicated to providing and maintaining excellent standards of care, hearing education, and professional ethical hearing services."



Newbanks Pumps, Inc.

We sell the best and service the rest!
Water Well Drilling & Service

- ~ Irrigation wells ~ Domestic wells
- ~ Stock wells ~ Solar Systems

Curt Goble, Owner

Ph: (785) 899-6302 ~ Email: newbankspumps@gmail.com
CO #841 • KS #856 • Elec. Cont. #6127

LASERS BY TALIA
LOOK BETTER, FEEL BETTER

1 year anniversary
January 13, 2015

ALL TREATMENTS
WILL BE 1/2 OFF
THAT DAY!

Mon. & Wed.: 12-6 p.m.
Tuesday, Thurs., Fri.: 8AM-5PM

Appointments also available after hours.
1580 Rose Avenue
Burlington, CO 80807

Phone: (719) 346-4640



MURRAY ROOFING & CONSTRUCTION

RESIDENTIAL • COMMERCIAL • INDUSTRIAL

- Residential:**
- Roofing
 - Construction
 - Remodels
 - Blown in Insulation



- Commercial:**
- TPO, EPDM, Duro-Last, Modified, Fiberglass and Non-Fiberglass roof coatings.



Fully Insured, Bonded,
Licensed and Covered by
workman's Comp.

Office: 785-462-6908

Owner: 785-443-1339

Elite Duro-Last Contractor

CHECK OUT OUR WEBSITE FOR MORE INFORMATION:

www.MurrayEnterprises.org

Paw Wash
Pet Crematory
6445 Rd. 21, Goodland
Kathy Schermerhorn
Please leave message
CELL PHONE: (785) 899-4398
Private or Group Rate

Mobile Home Lots for Rent

\$190 Month
(includes water, sewer & storage shed)
FREE Month with approved application

Friendly Acres
Mobile Home Park
1150 S. Franklin, Colby
Call 785-462-6445

Windy Plains Bike Shop

Professional bicycle repairs since 1978!
Parts, accessories and service for all makes.
Pick up and delivery available in Goodland!

TIRED OF FLATS?
ASK ABOUT OUR NO FLAT GUARANTEE!

Harold Snethen
6085 Rd. 17
(785) 899-4786 • (785) 899-5858 (home)
Same day service on most out of town repairs!

PLUM CREEK LTD
Downtown Colby • 785-460-1978
Men's Suits & Casual Wear
Missy & Women's Dress & Casual Clothing
Tuxedos by Jim's Formal Wear - Bridal Registry
Let us make your wedding tuxedos & bridal registry picture perfect!

Laura Barger Massage Therapist
Prenatal Massage Swedish Massage
Sports Massage Hot Stone Massage
Available For Appointments in Colby, Atwood and McCook
220 N. Mission Ridge, Colby
www.LauraBargerLMT.com
la_barger@hotmail.com
Laura Barger
Licensed Massage Therapist
(308) 882-0029

Goodland Home Health, LLC
Sue McCracken, RN
655-B E. 22nd, Goodland, KS
Office: (785) 890-7658 • Cell: (785) 821-0050
We provide the best care for those individuals due to illness who are unable to care for themselves or their loved ones.

FARM & INDUSTRIAL PAINTING
Grain Bins, Barns, Morton Sheds, Barn Repairs, Metal Roofs
ALL COLORS! TRI-STATE PAINTING
Pat Castella
1-800-940-8289
leave message
FREE ESTIMATES!

LOU LOU'S
Women's clothing boutique
Goodland, KS

Dr. Tom Barlow DENTIST
785-460-7538
Appointments Readily Available
505 H N. Franklin, Colby

Culligan
better water. pure and simple.®
• Drinking Systems • Water Softeners (Sales & Rentals)
• Water Coolers • Salt Sales & Delivery
Scheopner's Water Conditioning, Inc.
Goodland & Colby, KS • Toll free: (800) 536-2352

NEW SYSTEM PROFESSIONAL WINDOW CLEANING
(785) 462-6995
(800) 611-6735
www.MyWindowCleaner.net
Serving Colby since 1992!
Commercial • Residential • Free Estimates

Looking for wheat straw or damaged wheat to bale
Kroskob Brothers Farms
Custom Haying and Farming
Will Prepay to secure Acres
Call for Pricing
Brandon: 970-380-4256 or Travis: 970-380-6853

Full Time help wanted on the family farm and ranch. Experience with farm equipment and cattle preferred. Mechanic knowledge a plus, CDL plus. Norton. Call 785-871-1731. N 1/14

2 years OTR experience. We offer competitive wage plus insurance. Call Gene or Chris. 888-796-9246. N tfn

WANTED

Beaver City Manor is looking for help in several departments such as dietary and nursing, cooks, helpers, nurses and aides. Different shifts available and we offer shift differential and weekend incentive. For more information call or come in for application. N 1/14

Wanted: Owner Operators to run all states except California and New England. Reefer, Flatbed and Tanker experience preferred. Please call Jim 785-675-1737. C 10/8-TFN

WANTED: truck driver and forklift to make one haul from Norton to Colby. Cargo is 3 printing press units weighing 5000 lbs each. Call Gary at The Goodland Star-News 785-899-2338. G 8/6-tfn

Dependable daytime waitress needed. (Monday through Friday). Hours and wages negotiable. Apply in person or call Dan Pfannenstiel at 785-877-0223. N 1/7

Junk batteries, non-ferrous metals and iron. Darrel Bowen. Phone 785-899-2578. G tfn

Help Wanted: Norton Correctional Facility is looking for an experienced person to work as our Technology Support Consultant II. Go to www.jobs.ks.gov or call 785-877-6643 for more information. N 1/14

THREE HUNTERS looking for hunting access for the antlerless white tail season, Jan. 6-9. Originally from Bird City / McDonald area, but all family has passed on. Willing to pay fee. Thanks! Matt Sawyer 303-587-5716. 50-52 SFH 12/11-12/25

Midwest Feed Drivers. Must have Class A CDL

CITIZENS MEDICAL CENTER SPECIALTY CLINIC

100 E. College Drive, Colby, KS 67701-3799
(785) 462-7511; Fax (785) 460-4876
TO SCHEDULE AN APPOINTMENT PLEASE CALL (785) 460-1223



January 2015

Sun	Mon	Tue	Wed	Thu	Fri	Sat
				1	2	3
4	5 Huston Sleep Lab	6 **Fisher Larsen	7	8 Nagamani Sleep Lab	9 **Clifford	10
11	12 **Curry Huston Sleep Lab	13 Birney Pham Sears Sleep Lab	14 Kobitary Pham Tirre	15 Reeves **Werth	16	17
18	19 Foot Clinic Sleep Lab	20 Bazaz **Freeman Sleep Lab	21	22 **Fisher	23 **Clifford	24
25	26 Huston Sleep Lab	27 Holmes Sleep Lab	28 **Annest Korman **Volz	29	30	31

FAMILY PRACTICE
FAMILY CENTER FOR HEALTH CARE
785-462-6184
John Dygert, D.O.
Kelly Gabel, D.O.
Sarah Gabel, D.O.
Brewster Kellogg, D.O.
Daniel Kuhlman, M.D.
Kara Kuhlman, M.D.
Darren Matchell, D.O.

CONSULTANTS
ALLERGY/IMMUNOLOGY
Board Certified
**Michael Volz, M.D.
CARDIOLOGY
**Christine Fisher, M.D.
**Steven Freeman, DO
COUNSELING SERVICES
Meier Clinic - Angie Witman
GASTROENTEROLOGY
Jeffrey Huston, M.D.
GYNECOLOGY
David Forschner, M.D.
HEMATOLOGY/ONCOLOGY
**Sameh Abbuerrish, M.D.
**January Fields, M.D.
NEUROLOGY
Khoi Pham, M.D.
OPHTHALMOLOGY
**William Clifford, M.D.
ORTHOPEDICS
Rajesh Bazaz, M.D.
Timothy Birney, M.D.
Admodios Hatzidakis, M.D.

ORTHOPEDICS
James Holmes, M.D.
**Sukchan Lee, M.D.
Kevin Nagamani, M.D.
Benjamin Sears, M.D.
**Vivek Sharma, M.D.
OTOLARYNGOLOGY
(Ear, Nose, Throat)
**Jerrold Cossette, M.D.
PLASTIC SURGERY
Conrad Tirre, M.D.
PODIATRY
Steven Larsen, D.P.M.
James Reeves, D.P.M.
PULMONARY (Chest)
Majid Kobitary, M.D.
RHEUMATOLOGY
David S. Korman, M.D.
GENERAL SURGERY
Charles Frankum, M.D.
UROLOGY
**Wallace M. Curry, M.D.
**Darrell Werth, M.D.
VASCULAR SURGEON
**Stephen Annest, M.D.

** Dr's do their own scheduling **

The Country Advocate Service Directory

Celebrating 40 years in business!
Hot Brush
Michael S. Boyson
BANNERS - LETTERING - PINSTRIPES - ART
Award winning Quality signs since 1974
204 W. 4th Bird City, Kansas
785-734-2423

SPEEDLINER
Moonlight Liners
Spray-In Bedliners
Scott Gilmer
819 W. 8th • Goodland, KS 67735
(785) 890-5384
Evenings & Weekends

Nancy LePell Bookkeeping
165 East 3rd - Colby, KS 67701
785-462-7428
Income Tax Preparation - Individual, Business and Estates
Accounting and Bookkeeping
Business and Financial consultation
Christy Griffith, RTRP Nancy LePell, EA, ChFC, CB
Working to bring you the best possible solutions

Langer Industrial Service
2022 County Road 11 • Levant, KS 67743 • 785-586-2208
Monday - Friday 8 a.m. - 5 p.m.
We pay cash up to for all scrap metal*
Brass • Copper • Aluminum • Batteries • Electric motors • Cars
• Combines • Farm Equipment • Prepared/Unprepared Iron and Tin
• Container Service • Off site baling and car crushing
• Limited pickup service available
Schedule deliveries after normal business hours by appointment when necessary.
* Some Conditions Apply

BURLINGTON FAMILY DENTISTRY
Justin Evanson DDS, MD Oral Surgeon
Jason Ehtessabian DDS, FAGD, PC Fellow of the Academy of General Dentistry
Dr. Justin Evanson Dr. E
IV Sedation, Wisdom teeth removal, Implant placement, and Exceptional Comprehensive Dental Care for the Entire Family!
(719) 346-8266 340 14th St. Burlington, CO
www.burlingtonfamilydentistry.net

ROOFMASTERS
Your Local Roofing Contractor
425 East Hill, Colby, KS
Licensed - Bonded - Insured
RESIDENTIAL 1-800-536-6642
GAF Shingles
Wood Shingles
Metal Roofs
COMMERCIAL 1-785-462-6642
Rubber Single Ply
White TPO Single Ply
Built Up Systems
Modified Systems
FREE ESTIMATES
Elastomeric Rubber Coating For Metal Roofs

What's precious to you is precious to us.SM
Auto. Home. Life. Retirement. They all matter, so wrap them all in a blanket of Nationwide[®] protection. We put members first, because we don't have shareholders.SM
Join the Nation that knows what's important.
Combine your policies and save up to 25%
Shirley D Skolout
Mountain Plains Agency
Phone: (785)460-6284
skolost1@nationwide.com
Not all Nationwide affiliated companies are mutual companies and not all Nationwide members are insured by a mutual company. Nationwide, Nationwide Insurance and Financial, the Nationwide Framework, What's precious to you is precious to us and We put members first because we don't have shareholders are service marks of Nationwide Mutual Insurance Company. ©2014 Nationwide Mutual Insurance Company. NWR-01/14/14 (3/14)

NOW available at Oasis Travel Center in COLBY...
Gunnysack Greeting Cards
"Cards that have the guts to tell it like it is"
Sarcastic & Silly
Very Blunt & Unusual
Not for the easily Offended
Created by Ellis, KS resident Tracy Augustine
Stop by to check out the wonderful selection or go online at
www.gunnysackgreetings.com

WANTED: DIRTY CARPET
IF YOU HAVE DIRTY CARPET, WE CAN STEAM CLEAN IT.
NO JOB TOO BIG OR TOO SMALL!
Commercial/Residential
Advanced Truck Mounted Steam Cleaning Equipment
Water Damage Restoration
FREE ESTIMATES
Cleaning NW Kansas one house at a time!
PRO FLOOR CARE
Carpet & Upholstery Cleaning
(785) 462-8313 or (800) 473-4138

AMERICAN BUILDINGS
A NUCOR COMPANY
ERIC RICHARDSON CONSTRUCTION INC.
48515 SNEAD DRIVE, BURLINGTON CO 80807
SERVING EASTERN COLORADO AND WESTERN KANSAS
OWNER ERIC RICHARDSON
CALL FOR PRICING 719-346-8230
SALES MIKE RUHS

One combined policy + One deductible for it all
One big sigh of relief
When things go wrong, you need your insurance to go right. Contact me to see how our **one deductible advantage** can help provide you peace of mind when you need it most.
David Browne III
550 N Franklin Ave
Colby, KS 67701
785-462-3388
FARM BUREAU FINANCIAL SERVICES
Insurance • Investments

C.W. Beamgard Co. Inc.
SALES & SERVICES SINCE 1919
• New Vehicle Sales • Service
• Used Vehicle Sales • Windshield Pit Repair
• Parts • Tires
• Accessories • Towing Service
Monday - Friday 8-6, Saturday 8-Noon
785.626.3286
Fax 785.626.3717
210 State St. • Atwood, KS 67730

Need health insurance?
I know health insurance and can help you evaluate your options. I make it simple to buy and simple to understand, so give me a call.
Vernon Hurd
550 N. Franklin Ave.
Colby, KS 67701
785-269-9511
www.VernonHurd.com
KANSAS FARM BUREAU
The Voice of Agriculture
CoventryOne.
Products available at Farm Bureau Financial Services

Meadow Lake Restaurant & Lounge
• Open to the Public •
Monday Nights \$1 Draws
Saturday Nights Prime Rib
Our kitchen is open Mon - Sat, 5 - 9 p.m.
MEADOW LAKE
GOLF COURSE & RESTAURANT
785-460-6443
1085 E Golf Club Rd. • Colby, KS

SERVICES

System Administration, Information Technology. Keep your business running in top gear with quality, professional IT expertise. Full gamut service. Over 25 years' experience in computersystems. Imanage your 5 to 50 business computer network, on-site 1 day per week, with annual contract. Business references available. JB Tech, Jeff Brittenham 785-953-7221.
C 12/3-12/31

Tree Trimming & Removal. Cold weather - No Problem! Bucket truck, stump grinder, insured. Call Kerry 785-626-4261.
C 11/12-3/24

Tree Service: Call Abel Tree Service LLC for tree removal, stump grinding and trimming. Equipped with a bucket truck. In the Colby area now! Call 785-871-7275 now for free estimates. Satisfaction guaranteed.
C 5/14-TFN

Almanza's Interior Services, Inc. Drywall specialist. Drywall hanging, drywall finishing, texture and paint. Free estimates. References available. Spanish call (785) 332-5353. English call (785) 890-6223. Goodland.
G 2/12-tfn

Hickert Enterprises LLC. Windmill repair and service. Tree trimming and removal. (785) 475-2729.
O 7/2-12/31

Burlington-Goodland area. Residential overhead door service and repair, 20 years experience. Call Gary at (719) 350-0705.
G 7/17-tfn

Call us before you pay your next insurance premium. American Family Insurance - Rita Peters Agency - Colby 785-462-8246.
C 1/25-TFN

CAT'S TNT: material, vinyl graphic designs, massages,

quilting and more! Stop by 115 E 9th, Goodland, or call (785) 890-2287 for more information.
G 3/28-tfn

Experienced with texturing, painting, cleanup/removal of clutter. Experience with Rental management experience. Have 16 ft. car trailer for rent. 785-462-5861.
C 3/25-TFN

Abel Tree Service-Fully insured, free estimates, stump grinder, bucket truck. Deep root fertilizer. 785-871-7275.
N tfn

Dan is back! Dan Geschwentner. Small

remodeling and repair jobs. Call 785-443-3673.
C 2/3-TFN

Norton Computer Repair Service - Virus and malware removal. \$69. Service on site. 785-309-1028.
N 1/7

Steamway Carpet Cleaning Co. 1-800-292-9497. Lou Ann and Lyle, Owners.
N tfn

Septic Tanks pumped and systems installed. Call Logan Septic and Water. 785-543-7772.
N tfn

A&S Plumbing 24/7, 20 years experience. No job too big or small, fully insured.

600 ACRES CROPLAND - SHERMAN CO, KS
"MULTI-PARCEL" ABSOLUTE LAND AUCTION
SELLER: Phyllis A. Danielson Rev Trust
Fri., Jan. 23, 2015 @ 10:30 AM, MST



AUCTION LOCATION:
Topside Room at the Firehouse
1006 Center
Goodland, Kansas

Land will be sold in 4 tracts and combinations of tracts

LEGAL DESCRIPTIONS:
TRACT 1: SW/4 of 8-7-42
TRACT 2: S/2SW/4 & NW/4SW/4 of 33-6-42
TRACT 3: NE/4 of 29-6-42
TRACT 4: SW/4 of 24-6-42

All mineral rights going to the Buyer(s). This is excellent wheatland and will be offered in separate tracts, and in combinations of Buyer's choice. Long term tenants are in place -- good opportunity to invest in quality land for the future!

INTERNET BIDDING AVAILABLE!

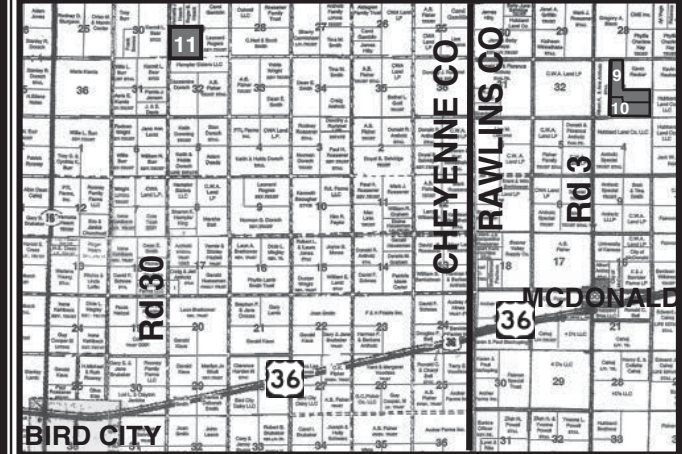
For Virtual Tour visit www.farmandranchrealty.com
FARM & RANCH REALTY, INC.
1420 W. 4TH • COLBY, KS 67701
Toll Free: 1-800-247-7863
DONALD L. HAZLETT
Broker/Auctioneer
"When you list with Farm & Ranch, it's as good as SOLD!!"

2,080+/- ACRES CROPLAND, GRASS & FARMSTEAD
RAWLINS & CHEYENNE COUNTIES, KANSAS

"MULTI-PARCEL" ABSOLUTE AUCTION
TUES., JAN. 20, 2015 @ 10:30 AM, CST

Auction Location: Columbian Hall, Atwood, KS
SELLER: Lillian M. Solko Trust

MANNER OF SALE: This real estate will be offered as a "MULTI-PARCEL" auction in 11 individual tracts and in combinations. Tracts 1 & 11 will be sold separately and will NOT be offered in combination with any other tracts.
TERMS: 10% down day of sale, with the balance to be paid on or before Feb. 16, 2015. A 5% buyer's premium applies. All bids are subject to Seller's confirmation. **Announcements made day of sale take precedence over printed material and previously made oral statements.**

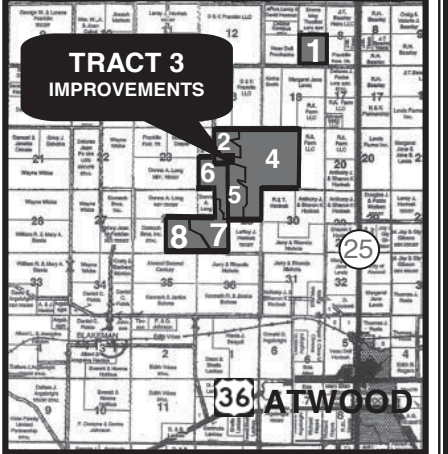


• 1,286.7 acres cropland
• 778.3± acres grass
• Tracts 1, 2, 8, 9, 10 & 11 have planted wheat acres

TRACT 3: Improvements includes a bungalow style home detached 34'x20' garage, 46'x40' barn and several other outbuildings. The property has a well established windbreak. Improvements are selling "AS-IS", "WHERE-IS".

For a virtual tour visit www.farmandranchrealty.com

AUCTIONEER'S NOTE: This farm has been in the Solko family for many years. This is a highly productive farm located in an area where land is seldom offered for sale. **THE MINERAL RIGHTS ARE BELIEVED TO BE INTACT** and will transfer with the property at closing. The current tenants would like to continue for the new Buyers. 5% Buyer's premium!



MINERAL RIGHTS: All of the Seller's interest will transfer to the Buyer(s) at closing.
AGENCY: Farm & Ranch Realty, Inc., its agents and representatives, are the *Exclusive Agents of the Seller.*
POSSESSION: Grassland on March 1, 2015.

INTERNET BIDDING AVAILABLE Register by Jan. 7th to bid online. Call for details.

FARM & RANCH REALTY, INC.
1420 W. 4TH Street
Colby, KS 67701
Toll Free - 1-800-247-7863
Donald L. Hazlett
Broker/Auctioneer
"When you list with Farm & Ranch, it's as good as SOLD!!"

Ask about our 10% discount for parts and labor for first time customers. Spencer Stevens, owner. 785-664-8180.
N tfn

All Handyman or Remodeling needs, contact Rob with R.P. Enterprises, 785-678-2222. Reference provided upon request.
N tfn

BECKMAN Carpet Cleaning: Truck-mounted steam cleaning. Carpets, upholstery and autos. Call (785) 626-4548.
SFH tfn

PET GROOMING
The Groom Room is now taking new dog grooming appointments. Will pick up and deliver in Norton. 785-877-3888.
N 1/28

FOR RENT
For rent: 5,000 sq. ft. warehouse in Colby 785-443-2754.
C 12/31-1/7

1 bedroom apartments for low income individuals that meet specific disability

criteria. Rent and utilities subsidized. Applications available at 770 Dylan Dr., Colby, or call 785-462-3473. Rural Development, Equal Housing Opportunity.
C 12/31

4 bed, 1 bath home in Goodland. Also have 2 bedroom loft apartment in Goodland for rent. Call (785) 443-0136.
G 11/12-tfn

Houses and apartments in Goodland. All sizes. Call for details. (785) 890-6538.
G 1/15-tfn

For Rent - Independent Living Apartments at Prairie Meadows in Norton now available for persons 55 years and above. For more information, call Administrator Nancy McGinnis, phone 785-877-2601.
N tfn

2 bedroom apartment, Brookwood Apartments, Oberlin, (785) 475-3450.
O 36tf

Houses & Apartments. Cole Real Estate in Goodland 785-899-2683.

G tfn
STORAGE UNITS AVAILABLE. Various sizes, including 10x25. St. Francis MiniStorage. 785-332-4809. 49-52.
SFH 12/4-12/25

REAL ESTATE
SELLER WILL CONSIDER ALL OFFERS on 4-plex apartment in Oberlin near downtown. Johnson Realty, Inc. (785) 475-2785.
O 10/22tf

FOR SALE: 4 plex apartment in Oberlin near downtown. Johnson Realty, Inc. 785-475-2785
O 20tf

REAL ESTATE SERVICES
Buying and selling Real Estate. Contact Larry at Kansasland Realty and Auction. Selling private treaty or auction. Specializing in land sales. 785-543-4440.
N tfn

JOHN DEERE | **PLAINS Equipment Group** | Oberlin 800-794-9550 | McCook 800-352-4020

NEW Daily Parts Route & Drop Boxes Serving KS & NE:

Oberlin	Jennings	Herndon	Bird City	Wauneta
Selden	Clayton	Atwood	Benkleman	Palisade
Dresden	Lenora	McDonald	Hayes Center	& more!

Call 800-352-4020 for Service Inspection Programs!

Finance Programs from John Deere Financial for Parts & Service offered with \$250 min purchase:

- 150 Days NP/NI
- NP/NI Waiver until July 1, 2015
- Offers valid Nov 1—Apr 30, 2015

Happy New Year!

Wishing you the best in 2015!

Fredrickson Insurance Agency

183 S. Penn Ave
Oberlin, Kan.
(785) 475-3883
785-475-3883

"We sell insurance but specialize in service."
fredricksoninsuranceagencyinc.com

It pays, not costs to use our services. For all your auction and real estate needs contact Duane McEwen at 785-877-3032. Homerange Real Estate, Broker Gary Richards.

N tfn

Make the Weiser Choice - Contact Weiser Realty for all of your real estate needs at 785-877-2185. Jolene L. Weiser, Broker; Samantha M. Hager, Robert Wyatt, salespersons.

N tfn

Professional Service Listing and Selling your property. Contact Larry Riggs, Broker or Jeanette Krizek, Listing Agent. 785-678-7163. Kansasland Realty and Auction.

N tfn

FARM SERVICES/ EQUIPMENT

24 foot Hale gooseneck trailer; portable w/w cattle chute; and portable calf creep feeder. Call (785) 821-1163, Goodland.

G 12/24-12/31

Disc Rolling—Rolling on the farm. Call Ron Lewis, Eustis, NE. 308-486-3501.

N tfn

PASTURE WANTED

GRASSPASTUREWANTED to rent, Adam Jones, 785-332-6206.

SFH tfn

SEED WHEAT/GRAIN/ FEED

Cane, Grass and Oat Bales for sale. Starting at \$70.00. 785-689-7525.

N 1/7

Alfalfa large round bales & small square bales, dairy and good stock cow alfalfa, BMR Sedan. Jonny Jones, Hoxie 785-675-8920.

C 12/17-12/31

FOR SALE

For Sale: Firewood in Colby 785-460-1177.

C 12/24-12/31

For sale - 2 adult blue peafowl \$40 each, 5 adult turkey, 5 toms, 5 hens \$20 each. Cash Only! Call 785-672-0150 or 785-672-0208.

C 12/24-12/31

Snap-On toolbox, Blue, 52.5 inches wide, 340 pounds unloaded. Supports up to 2,800 pounds. Loaded

with assorted tools, mostly name-brand from Snap-On and MAC Tools. Included: 250 sockets, more than 75 wrenches, over 7 ratchets, 1/2 torque wrench, power probe, Mac adapter and extension set, over 35 screwdrivers, Torques set, 8 point set, 1/2-3/4 adapter, 1/2 mac impact, set of MAC Cobalt drill bits, a DeWalt drill and cordless impact and plenty more. All the tools in the box have a lifetime warranty through manufacturer. Asking \$6,000 dollars but willing to negotiate. Call (785) 891-3808.

G 12/24-tfn

24 foot Hale gooseneck trailer; portable w/w cattle chute; and portable calf creep feeder. Call (785) 821-1163, Goodland.

G 12/24-12/31

For Sale: Quarters or halves - Hamburgers, steaks, roasts, any amount. Jonny Jones 785-675-8920.

C 12/17-12/31

Percentage of Mineral Rights in a producing oil field. Over 600 wells, 20+ new wells a year. Get a royalty check every month. 6.3% ROI for the last year. Will sell from \$425,000 up to

\$937,500. This investment is "1031 TAX EXCHANGE ELIGIBLE" Private Party. Send inquiries to 155 W. 5th, Box P, Colby, KS 67701.

C 12/10-12/31

Pheasants For Sale - Dan Lankas, Atwood, KS 785-626-6002.

C 12/10-12/31

For Sale Used Appliances: Electric range, propane range, refrigerators, window air conditioner, dishwashers, new electric water heater, fresh eggs 785-694-8013.

C 11/12-12/3

1948 Philco Radio/ Phonograph cabinet, good condition. Both radio and phono work. \$100. Call (719) 350-0705.

G 1/1-tfn

2 Harley Davidson die cast models. 1-1:10 scale Hot Wheels HD Softail. 1-1:10 scale Maisto FLSTS Heritage Springer. Still in original boxes! Call Gary at (719) 350-0705.

G 9/25-tfn

AWP tool belt/pouches with kidney belt and suspenders. Paid \$100 plus, asking \$50. Call Gary at (719) 350-0705.

G 9/25-tfn

FIREWOOD FOR SALE in Goodland. Call (785) 890-7224 or (785) 821-2814.

G 12/12-tfn

Rubber stamps, custom made, The Country Advocate, 1205 Main. Goodland, Kansas. (785) 899-2338.

G tfn

Have a safe and happy New Year!



2014 Vehicles 0% Financing for 72 mo. 2015 Vehicles - Special Financing

Enter to win 5 vehicles through Ford Go to www.fordeventgiveaway.com

YOST

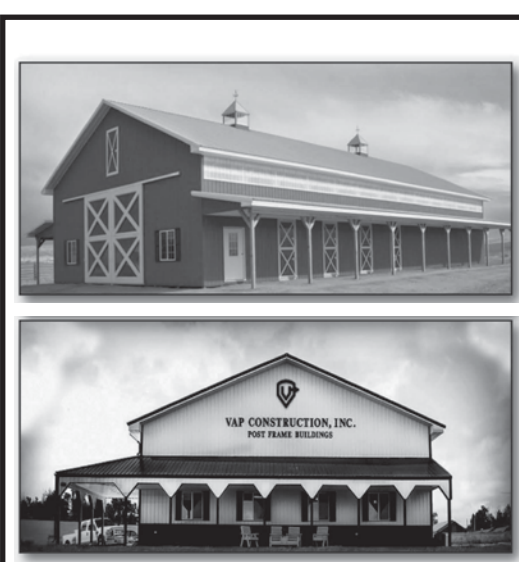
800-524-9678 785-332-2188 yostford.com

Sales Manager - Brent Rueb • Rell Zimelman - Sales Agent



Use your Smart Phone to scan our Bar Code for complete inventory

Like us on Facebook Yost Ford



SPECIALIZING IN CUSTOMIZED STEEL AND POST FRAME BUILDINGS

WE WILL BEAT ANY NORTHWEST KANSAS COMPETITOR'S PRICE ON A COMPARABLE PROJECT!!

AFFORDABLE • SUSTAINABLE • LOW-MAINTENANCE • MULTI-PURPOSE Vap Construction, Inc. offers numerous design styles, sizes, exterior finishes, accessories and colors for your Commercial, Agricultural or Residential Building.

CONTACT US FOR A QUOTE TODAY! CALL: 866-492-1978

Serving Kansas, Nebraska, Colorado and Wyoming • Fully insured with over 25 years of experience

For more information visit: vapconstruction.com • 605 North 10th Street | Atwood, KS 67730



Increase Your Productivity & Profit!



SUNFLOWER 1435-33' DISC 2012 Model

25618A \$39,900



SUNFLOWER 1434-36' DISC

24165A \$39,900



JOHN DEERE 637-32' WHEATLAND DISC 3-Row Harrow

25670A \$34,900



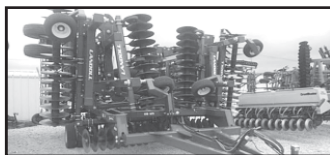
KRAUSE 2452-33' DISC

25569A \$15,500



CASE IH 3900-24' DISC 3-Row Harrow

25615B \$13,900



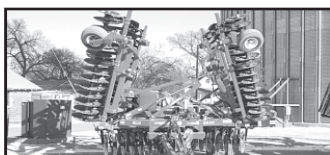
LANDOLL 7450-44' VT

24206A \$81,900



LANDOLL 7431-33' VT

25635A \$58,900



SUNFLOWER 6630-32' VT Sabre Blades, Flat Bar

25659A \$49,500



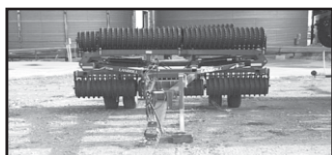
SUNFLOWER 6332-26' FINISHER 3-Row Harrow, Flat Bar Baskets

\$29,500



KRAUSE 4400-40' PACKER

20044B \$21,900



LANDOLL 3130-36' PACKER Smooth Wheel

\$19,500



KRAUSE 4400-36' PACKER

25646C \$13,900



McFARLANE 12R30 STALK CHOPPER

24088C \$12,500



KRAUSE GLADIATOR 12 ROW STRIP-TILL Pull Type, 1000 Gallon Tank

23375A \$49,500



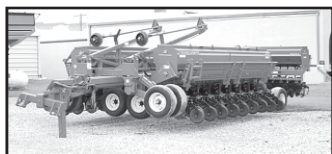
KRAUSE GLADIATOR 12 ROW STRIP-TILL

23382A \$41,900



UNVERFERTH 310-12R30' RIPPER/STRIPPER Concave Bar Reel

23314B \$28,900



SUNFLOWER 9433-40' GRAIN DRILL

9230A \$57,500



SUNFLOWER 9433-30' GRAIN DRILL

25634A \$49,900



WESTFIELD 13'x81' GRAIN AUGER

21336A \$18,500



WESTFIELD WR100x71' GRAIN AUGER PTO

21402A \$6,250



FETRL 10x76' GRAIN AUGER Swing Hopper, 540 PTO

21310B \$4,950



BRENT 1194 GRAIN CART 36" Tracks, Scale Kit

26167A \$89,000



KINZE 1300 GRAIN CART Scale PKG

26169A \$82,500



KINZE 850 GRAIN CART

26153A \$36,900



KINZE 1040 GRAIN CART Roll Tarp

26138B \$34,900



PARKER 1039 GRAIN CART

26167C \$32,500



SUNFLOWER 9434-40' GRAIN DRILL Low Acres, Excellent Shape

24217A \$72,900



SUNFLOWER 9434-30' GRAIN DRILL Fert Kit, Low Acres, Like New

26166B \$68,500



KINZE 1050 Scale Kit, Extensions, Tarp, Excellent Shape

26166A \$65,000



SUNFLOWER 1434-36' DISC Nice Disc

25652A \$35,900

HARCHELROAD MOTORS, INC.

Wauneta, Nebraska

Toll Free (877) 862-4389 • (308) 394-5555

www.harchelroadmotors.com



THIS IS WHAT EVERYONE IS TALKING ABOUT!

Goodland Star-News

1205 Main Avenue, Goodland, KS 67735 • Phone (785) 899-2338

Goodland, Kansas 67735

10 Pages

A Christmas gift



Good Samaritan Society — Sherman County had their Christmas party on Friday afternoon for residents and their families. The jolly old elf Santa was there to pass out candy and presents. The dining room and chapel were full. Marilyn Hanson and Gerayln Parker provided the sounds of the season.
Photo by Pat Schiefen/The Goodland Star-News

Hospital issues warn

With the number increasing in Sherman County, Goodland Medical Center is considering getting help from the Kansas Department of Health. According to the Kansas Department of Health, the most contagious respiratory disease is the flu. It can cause different strains that infect the lungs and in some cases, it can be fatal. The best prevention is a vaccination. "Though

Black Hills approved for rate increase

The Kansas Corporation Commission has approved a utility rate increase for Black Hill Energy natural gas beginning Jan. 1. The increase was issued last week said by

Christmas Carol comes alive



Subscribe to *The Goodland Star-News* today!

NAME: _____

ADDRESS: _____

CITY: _____ ZIP: _____

PHONE NUMBER: _____

PLEASE MAIL CHECK OR MONEY ORDER TO:

The
Goodland Star-News

1205 Main Ave., Goodland, KS 67735

SHERMAN COUNTY & ADJACENT COUNTIES:

3 MONTHS: \$29.00

6 MONTHS: \$48.00

1 YEAR: \$81.00

OUT OF AREA (WEEKLY MAILING):

3 MONTHS: \$39.00

6 MONTHS: \$54.00

1 YEAR: \$89.00