

Let the **Gorilla** help sell your stuff



If you're planning a garage sale, be sure it's in **The Country Advocate**

Invite the 900-pound Gorilla to help with your garage sale. You'll have more customers, sell more stuff and make more money. That means more in your pockets at the end of the day, and less junk to haul off to the dump.

How does it work? Simple. While the paper reaches most families in the town, The Country Advocate goes all over northwest Kansas. It reaches 41,860 readers in 11 Kansas counties, plus parts of northeastern Colorado and southwest Nebraska.

That's why it's the 900-pound Gorilla of Northwest Kansas Advertising, reaching more homes and more people than any other publication, broadcast station, cable system, Internet page or advertising medium.

Reader after reader has tried The Advocate for their advertising. The results?

Stuff sells. People drive for miles to find a good sale. They don't want to walk away empty-handed. The Gorilla works.

Your newspaper makes it easy for you to be in The Advocate. Just call or stop by and place your ad. You'll be surprised how easy it is, and how affordable. You'll be surprised — and happy — when your phone starts to ring or people show up at your door.

But call today. Deadline for The Advocate is noon Friday, ONE WEEK BEFORE a weekend sale. Sure, you can get an ad in the paper later, but it won't be the same. Call the Gorilla.



**COLBY
FREE PRESS**

155 W. Fifth Colby, Kan. 67701
(785) 462-3963

**THE NORTON
TELEGRAM**

215 S. Kansas, Norton, Kan. 67654
(785) 877-3361



THE OBERLIN HERALD

170 S. Penn Ave., Oberlin, Kan. 67749
(785) 475-2206

**The
Goodland Star-News**

1205 Main, Goodland, Kan. 67735
(785) 899-2338

Bird City Times

Box 220, Bird City, Kan. 67731
(785) 734-2659

The Saint Francis Herald

Box 1050, St. Francis, Kan. 67756
(785) 332-3162

I had a wonderful 95th birthday. I would like to thank everyone for the cards, flowers and gifts. I enjoyed them all. God Bless You. - Veda Heisel
N 4/2

cards, well wishes and flowers. I am recovering in a timely manner. Praise the Lord! God Bless You! - Larry Taylor
N 4/2

Estate Sale: March 1-March 31. Twice Sold Treasures, Norton, KS. New items daily.
N 3/26

your life insurance policy was reviewed? For a Free Life Insurance Review Call Shirley Skolout at Mountain Plains Agency at 785-460-6284.
C 3/19-4/9

Special, only \$174.95! Dry-Foam safe & Green Seal approved. Serving NWKS mileage free since 1987. Call today: A+ Cleaners (785) 538-2526 or (785) 443-5400, Johnene Cheney.
N 3/31

FirstFleet is Hiring Class A CDL Drivers. Daily Time at Home. Hiring Area - In route from Garden City, KS, to Lexington, NE. Also hiring Regional drivers based in and near Garden City. Weekly Time at home. Live Better, Work Here! Excellent Benefit package includes health coach to assist you with your personal health needs, when enrolled in our Blue Cross Blue Shield insurance program. Paid vacations, Uniforms provided, 401k, Late Model Equipment. Eligible for up to \$.02 per mile Fuel Bonus and \$125 quarterly Safety Bonus. Qualifications: Class A CDL-Tractor/Trailer. Clean Driving Record. 2yrs Tractor/Trailer Ex. Drivers with 1 to 2yrs experience will be considered for our mentoring program. No DUI's in the last 5yrs or Felonies in the last 7yrs. Call Paul today! EOE 816-556-3850 x2210 Apply Online: www.firstfleetinc.com.
G 4/2-4/2

AUCTIONS/SALES

Brown's Consignment Auction - Sunday, April 6, 10 a.m., Hoxie 4-H Building. Extra large auction booked. Antiques, collectables, old coins, furniture items, household items, fishing items, shop tools, cutting torch, welder, yard tools and much more. May 4th another large auction booked. 785-675-3767 Mickey Brown.
C 4/2

NOTICES

BURLINGTON GUN & COIN SHOW. Burlington, CO. Friday and Saturday, April 11-12, 2014, Burlington Community Center, 340 S. 14th Street. Friday from 9 a.m. to 5 p.m. MT and Saturday from 9 a.m. to 4 p.m. MT. Admission \$3 adults, 12 & under free with adult supervision. For more information please call (719) 346-7623.
G 3/26-4/2



Explore the career possibilities at PepsiCo, the world's second largest food and beverage company. Our main businesses - Quaker, Tropicana, Gatorade, Frito-Lay and Pepsi-Cola - make hundreds of enjoyable foods and beverages that are loved throughout the world. We're offering competitive compensation, excellent benefits, and a team oriented environment.

Our location in **Hays, KS** has immediate **FULL-TIME** opening and is actively recruiting for the following positions:

- **Vending Technician in the Goodland and Colby, KS Territory**

Apply online at: www.pepsico.com/careers
PepsiCo is an Equal Opportunity Employer M/F/D/V

Professional firm in Colby now hiring for an Office Assistant.

This position will include routine clerical work, must have analytical/clerical ability to review data and assist with the data entry of the information. Previous clerical experience necessary. Must be efficient in Microsoft office programs and be detail oriented.

Send resumes to Box 3-27, 155 W. 5th St., Colby, KS 67701.

When was the last time



Decatur Health Systems is accepting applications for a **certified nurses aide or nurses assistant** to work in the acute setting. No certification is necessary. Willing to train and provide a certified nurses aide class. Apply in person at Decatur Health Systems, 810 W. Columbia, Oberlin, Kansas or online at www.decaurhealthsystems.org

NOW HIRING! RN'S and CNA'S. Competitive wage scale. Apply in Person at Deseret Health & Rehab at Colby, 105 E. College Dr., Colby, KS or contact Cheryl or Rhonda at 785-462-6721.



Archer Daniels Midland Company (ADM), is seeking a **Truck Driver** at our **Brewster, Kan.**, location.

Job duties include: transporting and delivering grain; maintaining truck logs; general house-keeping duties at the facility; and daily truck maintenance. Applicants must be willing to work overtime and weekends during harvest season, with regular hours consisting of 40 to 60 hours per week. Applicants must possess a Class A CDL with air brakes endorsement.

ADM offers competitive pay and benefits including medical, dental, prescription drug coverage, life insurance, pension and a 401(k)/ESOP with employer contribution. ADM requires successful completion of a pre-employment drug screening/physical and background check. ADM is an Equal Opportunity/Affirmative Action Employer.

Apply online at www.adm.com/careers.

HELP WANTED

HELP WANTED Colby Public Schools has a vacancy for a **Transportation Director.**

Sick leave, health insurance benefits, state retirement package and other benefits may also be available. A classified district application is available at the Administration Office, 600 West Third, Colby or available to download at www.colbyeagles.org. Applications accepted until position is filled.
785-460-5000 EOE

DOOR & WINDOW REPLACEMENTS
SEAMLESS RAIN GUTTERS
GENERAL CARPENTRY REPAIRS
Ron Lucke
CUSTOM BUILDING
(719) 346-8840
CELL: (719) 349-8840

The Northwest Kansas Educational Service Center is accepting applications for Early Head Start Home Visitor/Secretary.

Qualifications: High School Diploma or equivalent. Experience in early childhood preferred.

Contact Person: Shelby Hubert, Head Start Director, 785-672-3125, extension 160. Applications are available at www.nkesc.org or call 785-672-3125.

Application Deadline: Applications will be accepted until the position is filled.

FOLEY INDUSTRIES

NOW HIRING: Experienced Field Service Technician (\$2000.00 HIRING BONUS) and Shop Technician

Enjoy working outside? Searching for great salary and great benefits? Stop Looking!

- Opening in the Colby area.
- Full maintenance and support of heavy equipment and EPG/Petroleum engines.
- Min. 3-5 years field technician exp. req.
- Continuous development through on-going training.

APPLY TODAY! www.foleyeq.com EOE

AMERICAN IMPLEMENT

American Implement in Colby Kansas, your north-west Kansas John Deere dealer is growing. We are looking for an experienced parts professional that is detail oriented, has the ability to use standard desktop applications, and have excellent customer skills. We are offering a great salary and benefits package. Apply today at American Implement, south of interstate 70 or call today at 1-800-JD-COLBY.

Colby Community College

Colby Community College is accepting applications for a **Director of Institutional Development.** The Director is responsible for increasing college effectiveness through fund-raising, initiating and facilitating relationships/partnerships with internal and external stakeholders, oversight of activities and events to build and maintain alumni and donor relations and creation of an action plan for resource development based on the strategic plan and input from faculty, staff and trustees. Responsible for developing and proposing policies, plans and protocols for future college fund-raising. Ability to organize and coordinate activities and events for relationship-building between the college, community and external constituents and/or alumni is essential. Additional duties include leadership and development training for internal college stakeholders, public gift acknowledgment, and assisting in budget preparation. The successful candidate must also work closely with the Vice President of Business Affairs to maintain accurate records and reports. The Director of Institutional Development reports directly to the President and will serve on the Administrative Council. Bachelor's degree required. Experience in Institutional Development preferred. Understanding of the importance of technology, integrity, open communication, innovative thinking, a sense of humor, and ability to work as a team to increase enrollment in a rural setting is necessary. Flexible benefits program which includes options for health and dental coverage, life insurance, reimbursement accounts and participation in state retirement program. To apply send letter, resume and all postsecondary transcripts to Colby Community College, Attn.: Lisa Failla, 1255 S. Range, Colby KS 67701. Materials may also be emailed to lisa.failla@colbycc.edu. Job to remain open until filled. Interviews will begin immediately. CCC is an Equal Opportunity Employer committed to diversifying its work force and encourages applications from women, members of minority groups, individuals with disabilities and veterans.



Decatur Health Systems is accepting applications for a **full-time night nurse** in the acute care setting. RN licensure required. Apply in person at Decatur Health Systems, 810 W. Columbia, Oberlin, Kansas or online at www.decaurhealthsystems.org

NOW HIRING!

Front Desk Clerks; Cooks; Housekeeping; Servers; Maintenance

Flexible hours. Full and part-time positions available. Great benefits including insurance, vacation pay & 401K. Top pay. Certification bonus. Monthly bonus program. Employee discount at Penny's Diner, Excellent promotional opportunities, Dynamic training program. APPLY TODAY! 801 N. Highway 27. Front Desk Clerks/Van Drivers must have good driving record and be able to pass a drug test. (Junction of Hwy K-27 @ US-40) Sharon Springs, KS Phone: (785) 852-4664. (785) 852-4665-fax. sharonsprings@mail.oaktreeinn.com




HELP WANTED

Servers, Line Cooks and Prep Cooks

Come join a FUN team atmosphere today! Full and part time positions now available at the Buckhorn Family Restaurant, Oakley, KS. Excellent career opportunity. Competitive wages, flexible hours, Blue Cross Blue Shield insurance packages, profit sharing, paid vacation, prevailing wages, year-end bonus program, 401k, and many more benefits available to qualified employees. Experienced applicants encouraged and training also available. For more information call Cinnamon @ 785-672-3062 ext. 17 or apply online @ www.mittensinc.com.




FARM CREDIT OF WESTERN KANSAS
Financing ag for generations.

Crop Insurance Professional

Farm Credit is accepting applications for a full time position as a crop insurance professional in an established agency. Position requires a minimum of one to five years of related administrative experience or related insurance environment. This person must be able to provide accurate complete policy documentation while maintaining a thorough understanding of crop insurance products. The successful applicant will have an understanding of agriculture production in Northwest Kansas and will display strong communication and computer skills. Salary to be determined based upon qualifications, with benefit package provided. To apply submit letter of application and resume to Farm Credit of Western Kansas, PO Box 667, Colby, KS 67701 attention Randy Wilson or email to randy.wilson@fcwk.com. Applications accepted until position is filled. EEO/AA/M/F/Veteran/Disability

Join Our Team

Selling advertising for Nor'West Newspapers!

FULL TIME ADVERTISING EXECUTIVE

Work week is 40 hours. Computer skills are helpful but not required. Must have good communication skills, excellent customer service skills with attention to detail, and enjoy a fast-paced atmosphere.

BASE PAY PLUS COMMISSION!

SEND A LETTER AND RESUME TO:
Kevin Bottrell, Editor, 1205 Main, Goodland, KS 67735
Email: kbottrell@nwkansas.com
or apply in person. No calls please.

The Goodland Star-News
1205 Main, Goodland, KS 67735

COME GROW WITH US

Citizens Medical Center, Inc. (CMCI) is leading the way in excellent health care in Northwest Kansas. CMCI is an equal opportunity employer and offers competitive wages and excellent benefits! CMCI is growing to meet the needs of our community and we want you to Come Grow With Us!

Environmental Services:
ES Tech/Laundry Tech, Full-time and Part-time

Family Center for Health Care:
Receptionist, Full-time (Bi-lingual preferred)
MA, Full-time

Food Service:
Cafeteria Aide, Full-time - CMC
Diet Aide, Part-time - PSLC

Nursing Service:
CNA, Full-time - CMC
CNA, Full-time and Part-time - PSLC
RN, Full-time and Part-time - CMC
LPN/RN, Full-time and Part-time - PSLC

Radiology:
Sonographer/Rad Tech, Full-time

Social Services:
Activities Aide, Part-time

Human Resources:
Coordinator, Full-time - CMC

Please Contact: Human Resources
CITIZENS MEDICAL CENTER, INC.
100 E. College Dr., Colby, KS 67701
785-460-4877 EOE
www.nwkshealthcare.com



Help Wanted

As United Plains Ag continues to grow, we have 2 full time positions available at Sharon Springs, KS.

Truck Drivers

Must have a class A CDL License with Hazmat Endorsement.
Apply at United Plains Ag or Contact
Jeff Kahle or Patrick Gibbs
at 785-852-4241 or e-mail to
jeff.kahle@chsinc.com
patrick.gibbs@chsinc.com



CBS/CSS Recovery Specialist, Colby Branch Office - High Plains Mental Health Center currently has a full time position available in our Colby Branch Office for a Recovery Specialist. Work focuses primarily on providing patients and their families with medically necessary services. Qualifications include at least (1) a BA/BS degree or be equivalent by work experience. Candidate must also be able to provide after hours on call services. Must possess valid Kansas driver's license and a good driving record. Must also be able to successfully pass an intensive background check. Interested applicants should send their resume, transcript, three professional references and a letter of interest to Amy Bird, 208 East 7th Street, Hays, KS 67601. High Plains Mental Health Center is an Equal Opportunity Employer M/F/D/V.

C 4/2-4/9

Sacred Heart School is accepting applications for a part-time reading specialist and full-time classroom teacher for the 2014-2015 school year. For more information please contact the school at 785-460-2813 or visit www.sacredheartcolby.com/school

C 4/2-TFN

Rawlins County Conservation District is accepting applications for a District Manager. Office experience and QuickBooks experience a plus. Benefits include health insurance stipend, KPERs retirement, sick and annual leave. Closing date for applications is April 15, 2014. Mail or bring cover letter and resume to the District office at the USDA Service Center, 1001 Sherman Street, Atwood, KS 67730 or call 785-626-3149 ext. 1333. EOE

C 4/2-4/9

Jayhawk Oilfield Supply in Oakley Kansas is looking for applicants with experience in oilfield mechanics to work in service/supply store. Must be able to lift up to 80 lbs, be detail oriented, and work with minimal supervision. Must have clean driving record and be able to pass drug test. CDL drivers preferred. Excellent benefits, competitive salary. Mail resume to Jayhawk Oilfield Supply, PO Box 7, Spivey Ks 67142 or email to serena@jayhawkoilfieldsupply.com. Call 620 532 3794 for application.

C 4/2

Field Service Technician - Murphy Tractor & Equipment Co., Inc. is seeking a full-time experienced traveling heavy construction equipment technician for the Colby, KS area. Experienced technicians starting pay at \$65,000 or more. Requires HS diploma/GED & technical school training &/or equivalent experience.

C 4/2-4/16

Excellent benefits. Apply at <http://murphytractor.com/careers/>. EOE

C 4/2-4/9

Rawlins County USD 105 is accepting applications for Full Time Assistant Custodian at the Elementary School. Benefits include full single health insurance, KPERs retirement, life insurance, and sick leave. To obtain an application, please come to the district office at 205 N. 4th Street 785-626-3236 or go to www.usd105.org. Rawlins County USD 105 is an equal opportunity employer.

C 4/2-4/16

Housekeeper needed for seasonal cleaning for Assisted Living Facility. Housekeeping experience preferred but will train the right person. Contact Gary 462-2154 at Fairview Estates Retirement Community, 1630 Sewell Ave, Colby - EOE

C 4/2-4/9

Part-time Dietary Server position available, great hours for a high school student. Flexible hours and Friendly Environment. Contact Gary 462-2154 at Fairview Estates Retirement Community, 1630 Sewell Ave, Colby - EOE

C 4/2-4/9

Shuttle van driver needed to haul train crews in the Goodland area. Part-time, various hours and days. Call Tonya at (785) 543-7314.

G 4/2-4/2

Full time position available at Countryside Veterinary Clinic of Hoxie for a Certified Veterinary Technician or Veterinary Assistant. Duties include assisting veterinarians with both large and small animals at the clinic and in the country as well as some clerical tasks. Majority of the time will be spent at the Hoxie location but occasionally at Oberlin location. Applicants with

computer skills preferred. Benefits include paid sick leave, vacation and holidays; medical insurance and retirement plan. Occasional paid overtime hours. Hourly wage based on experience and skills. Please apply in person or send resume to 798 S Road 10 W, Hoxie, KS 67740, or call the Hoxie location at 785-675-3378, Dr. Mark Olson at (785) 475-8590 or Dr. Travis Hissong at (785) 475-4110 for more information.

C 3/26-4/2

Truck Drivers needed for local deliveries. Rosen's Inc. is looking for Class A or B CDL drivers. Must have or be capable of obtaining tanker and hazmat endorsements. Must pass a drug screen and DOT physical plus have clean MVR. Apply in person at Rosen's Inc. 60 Stephens Drive, Colby or call 785-460-1330 for more info.

C 3/26-4/9

The Country Advocate Service Directory

Langer Industrial Service

2022 County Road 11 • Levant, KS 67743 • 785-586-2208
Monday - Friday 8 a.m. - 5 p.m.

We pay cash up to for all scrap metal*

- Brass • Copper • Aluminum • Batteries • Electric motors • Cars
- Combines • Farm Equipment • Prepared/Unprepared Iron and Tin
- Container Service • Off site baling and car crushing
- Limited pickup service available

Schedule deliveries after normal business hours by appointment when necessary

* Some Conditions Apply



PLUM CREEK LTD

Downtown Colby • 785-460-1978

Men's Suits & Casual Wear
Missy & Women's Dress & Casual Clothing
Tuxedos by Jim's Formal Wear - Bridal Registry

Let us make your wedding & prom tux picture perfect!

SHOW YOUR MONEY WHO'S BOSS.

Nationwide Financial



Shirley D Skolout
Mountain Plains Agency
1690 W. 4th St.
Colby KS 67701
Phone: (785)460-6284
skolos1@nationwide.com

Don't let your money just sit around.

Take charge. Take action.
Talk to your Nationwide® agent about our range of financial solutions.

LASERS BY TALIA

LOOK BETTER, FEEL BETTER

- Laser Hair Removal
- Ultrasonic Slimming
- Teeth Whitening

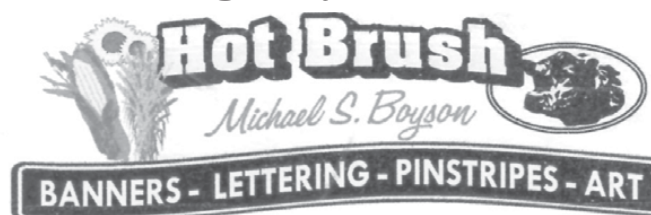


MON. & WED. NOON - 6 P.M.
TUES., THURS. & FRI.
8 A.M. - 5 P.M.

APPOINTMENTS ALSO AVAILABLE AFTER HOURS

1580 ROSE AVE. • BURLINGTON, CO
719-346-4640

Celebrating 40 years in business!



Award winning Quality signs since 1974
204 W. 4th Bird City, Kansas
785-734-2423

SPEEDLINER

Moonlight Liners

Spray-In Bedliners

Scott Gilmer

819 W. 8th • Goodland, KS 67735
(785) 890-5384
Evenings & Weekends



ODDS & ENDS SALE

Come look at all that's on sale!
~ 25% off selected items ~ Used tools for sale
~ Lots of used storm windows
~ Something for everyone!

PJ'S HOME CENTER

1630 Sandy Road (1/2 miles north of I-70 Exit 19, west side of road)
Goodland, KS • PHONE: (785) 899-6241

MURRAY ROOFING & CONSTRUCTION

RESIDENTIAL • COMMERCIAL • INDUSTRIAL

Residential:

- Roofing
- Construction
- Remodels
- Blown in Insulation



Commercial:

- TPO, EPDM, Duro-Last, Modified, Fibered and Non-Fibered roof coatings.

Fully Insured, Bonded, Licensed and Covered by workman's Comp.

Office: 785-462-6908

Office Manager: 785-443-5708
Owner: 785-443-1339



Elite Dura-last Contractor

CHECK OUT OUR WEBSITE FOR MORE INFORMATION:

www.MurrayEnterprises.org

Paw Wash Pet Crematory

6445 Rd. 21, Goodland

Kathy Schermerhorn

Please leave message
CELL PHONE: (785) 899-4398
Private or Group Rate

Mobile Home Lots for Rent

\$175 Month
(includes water, sewer & storage shed)
FREE Month with approved application

Friendly Acres Mobile Home Park

1150 S. Franklin, Colby
Call 785-462-6445

Windy Plains Bike Shop

Professional bicycle repairs since 1978!
Parts, accessories and service for all makes.
Pick up and delivery available in Goodland!

TIRED OF FLATS?
ASK ABOUT OUR NO FLAT GUARANTEE!

Harold Sneath

6085 Rd. 17
(785) 899-4786 • (785) 899-5858 (home)
Same day service on most out of town repairs!

KANSAS Insurance INC

Formerly THOMAS County INSURANCE AGENCY



Dennis Tubbs
dtubbs@kansasins.com

490 N. Franklin 785-462-3939

- Home & Auto
- Farm & Crop
- Business Insurance
- Boat, Motorcycle, RV

Nationwide Agribusiness
On Your Side®

www.kansasins.com

Goodland Home Health, LLC

Sue McCracken, RN

655-B E. 22nd, Goodland, KS

Office: (785) 890-7658 • Cell: (785) 821-0050

We provide the best care for those individuals due to illness who are unable to care for themselves or their loved ones.

FARM & INDUSTRIAL PAINTING

Grain Bins, Barns, Morton Sheds, Barn Repairs, Metal Roofs

ALL COLORS! TRI-STATE PAINTING

Pat Castella
1-800-940-8289
leave message



NEW SYSTEM PROFESSIONAL WINDOW CLEANING

(785) 462-6995 (800) 611-6735

www.MyWindowCleaner.net
Serving Colby since 1992!

Commercial • Residential • Free Estimates



Dr. Tom Barlow DENTIST

785-460-7538

Appointments Readily Available

505 H N. Franklin, Colby

Culligan

better water. pure and simple.®

- Drinking Systems • Water Softeners (Sales & Rentals)
- Water Coolers • Salt Sales & Delivery

Scheopner's Water Conditioning, Inc.

Goodland & Colby, KS • Toll free: (800) 536-2352

Looking for wheat straw or damaged wheat to bale

Kroskob Brothers Farms
Custom Haying and Farming

Will Prepay to secure Acres
Call for Pricing

Brandon: 970-380-4256 or Travis: 970-380-6853

Part Time Warehouse Maintenance Person - Somewhat flexible hours, great for a student, drivers license preferred. 785-460-3244 leave message.
C 3/26-4/2

on previous experience and job duties to be responsible for. Please contact Dr. Gary Fredrickson, 106 S Rodehaver Ave. Oberlin, KS 67749. For an application please call:(785)475-3813.

call Sunrise Staffing Services, LLC @ (785) 628-6877 apply online at sunrisesstaffingservices.com or pick up application at the SunOpta Plant, 1701 Industrial Loop, Goodland. G 3/26-4/9

Success. 785-443-1458 or visit www.mitch2014. arealbreakthrough.com
C 3/19-4/9

Sheridan County Road Dept. is currently seeking applications for the position of shop mechanic. Excellent benefits which include full health insurance, vacation leave, KPERS retirement, and paid holidays. Starting wage will depend on experience and/or education. This position is a 40 hour week plus overtime. Applications may be picked up at the office located in Hoxie, KS 840 4th St. If questions, call

785-675-3621. EOE
C 3/19-4/9

OTR Livestock Hauler needed. Must have valid CDL and good driving record. Pre-employment drug screening required. Only serious applicants need apply. Call (785) 626-5293.
G 3/12-4/12

Full-time carpenter wanted for Stallman Construction. Starting wage based on experience. Call Brent at (785) 470-1248. Oberlin. OBH 3/5-3/26

Decatur County Road and

Bridge is taking applications for full-time employment. Employee will be subject to random drug and alcohol testing and will be required to obtain a CDL. Applications available at Engineer's Office. Call (785) 475-8111. Decatur County is an Equal Opportunity Employer.
O 3/5tf

Help Wanted: correspondent for Rexford. Send news via e-mail once a week. Paid by inch and receive free subscription to The Oberlin Herald.
O 1/30 tfn

Dental Assisting Position Available: We will be hiring a part-time dental assistant to work Mondays and Tuesdays 8:30 to 5:30pm. Previous experience is preferred but we will also train in our office. We are looking for a person that will work well with our staff and enjoys working with clients of all ages. Wages will be based

O3/26-4/2
Several open positions. Please apply in person at Motel 6 in Goodland.
G 3/26-4/9

Accepting applications for Bagger/Warehouseman for agriculture business. Experience in grain elevator helpful. For interview

The Country Advocate Service Directory

CB HEATING A/C & PLUMBING
1730 West 4th Street • Colby, Kansas 67701
Chad Briney - Owner
Office: 785-462-2445 • Cell Phone: 785-462-5633
Fax: 785-462-6341 • Website: www.cbheatac.com
Email: Chad@cbheatac.com
Licensed ~ Bonded ~ Insured Tappan • Rheem • Trane

APRIL SPECIAL
4/20 DRAWING
\$25 minimum purchase
\$20 Member minimum purchase
Drawing to be held on 4/20 at 4:20 p.m.
Also the day of 4/20, there will be a random game to be played for special gifts and prizes.

Be on the lookout for the new daily specials posted in the store.
G&G Freds' Tobacco, Pipes & Accessories
All pipes & accessories intended for tobacco use.
415 14th, Burlington, CO • Phone: (719) 212-7048 or (719) 342-0503 (after hrs)
Mon-Thurs 12 PM-9 PM • Fri & Sat 12 PM-10 PM • Closed Sunday

Nancy LePell Bookkeeping
165 East 3rd - Colby, KS 67701
785-462-7428
Income Tax Preparation - Individual, Business and Estates
Accounting and Bookkeeping
Business and Financial consultation
Christy Griffith, RTRP Nancy LePell, EA, ChFC, CB
Working to bring you the best possible solutions

WANTED: DIRTY CARPET
IF YOU HAVE DIRTY CARPET, WE CAN STEAM CLEAN IT.
NO JOB TOO BIG OR TOO SMALL!
• Commercial/Residential
• Advanced Truck Mounted Steam Cleaning Equipment
• Water Damage Restoration
• FREE ESTIMATES
PRO FLOOR CARE
Carpet & Upholstery Cleaning
(785) 462-8313 or (800) 473-4138
Cleaning NW Kansas one house at a time!
Guaranteed Ultra Cleaning Power

AMERICAN BUILDINGS
A NUCOR COMPANY
ERIC RICHARDSON CONSTRUCTION INC.
48515 SNEAD DRIVE, BURLINGTON CO 80807
SERVING EASTERN COLORADO AND WESTERN KANSAS
OWNER: ERIC RICHARDSON
SALES: MIKE RUHS
CALL FOR PRICING: 719-346-8230

Your ad could be here!
Call your local newspaper today to find out how!

NKBA
The Kitchen & Bath Professionals
• Kitchen Cabinets • Counter Tops
• Closets • Furniture • Commercial
• Entertainment Centers
• Custom Jewelry Closets
Mingo Custom Woods
1965 W. 4th St., Colby, KS • 800.320.2201
www.mingocustomwoods.com • 785.462.2200

BURLINGTON FAMILY DENTISTRY
Justin Evanson DDS, MD Oral Surgeon
Jason Ehtessabian DDS, FAGD, PC Fellow of the Academy of General Dentistry
Dr. Justin Evanson Dr. E
IV Sedation, Wisdom teeth removal, Implant placement, and Exceptional Comprehensive Dental Care for the Entire Family!
(719) 346-8266 340 14th St. Burlington, CO
www.burlingtonfamilydentistry.net

Questions about health care reform?
We have the answers.
You have new health insurance options, but which one is right for you? We can help you understand your options and select the right plan for you and your family.
I'm ready to help. Give me a call today!
Vernon Hurd
Farm Bureau Agent
550 N. Franklin Ave.
Colby, KS 67701
785-269-9511
www.VernonHurd.com
KANSAS FARM BUREAU The Voice of Agriculture
CoventryOne.
Products available at Farm Bureau Financial Services
CHCS1765 Health Insurance plans underwritten by Coventry Health and Life Insurance Company. H240B-ML-1 (8-13)

One combined policy + One deductible for it all
One big sigh of relief
When things go wrong, you need your insurance to go right. Contact me to see how our **one deductible advantage** can help provide you peace of mind when you need it most.
David Browne III
550 N Franklin Ave
Colby, KS 67701
785-462-3388
FARM BUREAU FINANCIAL SERVICES
Insurance • Investments
Auto | Home | Life | Business | College | Retirement

SCI
Stephens Construction, Inc.
Serving NW KS for 44 years
Local contractor with reliable and experienced customer service. Specializing in agricultural, commercial and residential construction.
Lester Wood Frame and Butler Steel Frame Buildings
1260 S. Country Club Drive
Ph: 785-462-7571 Toll Free: 1-866-462-7571

New to Western Kansas!
Newbanks Pumps, Inc.
We sell the best and service the rest!
Water Well Drilling & Service
~ Irrigation wells ~ Domestic wells
~ Stock wells ~ Solar Systems
Curt Goble, Owner
Ph: (785) 899-6302 ~ Email: newbankspumps@gmail.com
CO #841 • KS #856 • Elec. Cont. #6127

The Decorating Co.
Interior Design Consultants
Irene Smith & Rochelle Kling
There's no limit to our imagination.
106 E. 11th, Goodland, KS 67735
(785) 890-5441
E-mail: decorco@st-tel.net

NOW available at Oasis Travel Center in COLBY...
Gunnysack Greeting Cards
"Cards that have the guts to tell it like it is"
Sarcastic & Silly
Very Blunt & Unusual
Not for the easily Offended
Created by Ellis, KS resident Tracy Augustine
Stop by to check out the wonderful selection or go online at
www.gunnysackgreetings.com

HSI
HOXIE STATE INSURANCE, INC.
824 Main, PO Box 378 Hoxie, KS 67740
115 S. State St. Winona, KS 67764
(785) 675.3263 - Fax (785) 675.3721

C.W. Beamgard Co. Inc.
SALES & SERVICES SINCE 1919
• New Vehicle Sales • Service
• Used Vehicle Sales • Windshield Pit Repair
• Parts • Tires
• Accessories • Towing Service
Monday - Friday 8-6, Saturday 8-Noon
785.626.3286
Fax 785.626.3717
210 State St. • Atwood, KS 67730

Superior
Flooring and Furniture and Accessories
360 14th St., Burlington, CO ~ PHONE: (719) 346-7579
Dan and Myrna Troyer

ROOFMASTERS
Your Local Roofing Contractor
425 East Hill, Colby, KS
Licensed - Bonded - Insured
RESIDENTIAL 1-800-536-6642
Tamko Shingles 1-785-462-6642
GAF Shingles
Wood Shingles
Metal Roofs
COMMERCIAL
Rubber Single Ply
White TPO Single Ply
Built Up Systems
Modified Systems
Elastomeric Rubber Coating For Metal Roofs
FREE ESTIMATES

Meadow Lake Restaurant & Lounge
• Open to the Public •
Monday Nights \$1 Draws
Saturday Nights Prime Rib
Our kitchen is open Mon - Sat, 5 - 9 p.m.
MEADOW LAKE
GOLF COURSE & RESTAURANT
785-460-6443
1085 E Golf Club Rd. • Colby, KS

PSI Transport is always looking for good company livestock and grain haulers as well as shop mechanics. Competitive pay, life/health/dental benefits and bonus program available. EOE. (785) 675-3477.
G 6/15-TFN

Dental Assisting Position Available - We will be hiring a part-time dental assistant to work Monday's and Tuesday's, 8:30 a.m. to 5:30 p.m. Previous experience is preferred but will train in office. We are looking for a person that will work well with our staff and enjoys working with clients of all ages. Wages are based on previous experience and job duties to be responsible for. Please contact Dr. Fredrickson, 106 S. Rodehaver Ave., Oberlin, KS 67749. For an application please call 785-475-3813.
N 4/2

Sheridan County Road Dept. is currently seeking applications for the position of shop mechanic. Excellent benefits which include full health insurance, vacation leave, KPERS retirement, and paid holidays. Starting wage will depend on experience and/or education. This position is a 40 hour week plus overtime. Applications may be picked up at the office located in Hoxie, KS, 840 4th St. If questions, call 785-675-3621. EOE.
N 4/9

SUMMER HELP WANTED at the Frontier Ag tire shop, Bird City. Contact Chad in person or call 785-694-8087. 13-14.
SFH 3/27-4/3

THE CHEYENNE COUNTY APPRAISER'S office is accepting applications for Appraisal Clerk. Applications and job descriptions can be picked up at the office. The deadline to file an application is 5:00 p.m. April 11. 13-14.
SFH 3/27-4/3

WANTED

Retiring Military family looking to buy house near Sharon Springs, KS. Nothing in town. Please call Sarah Martinek with any available properties. (609) 367 2164.
G 4/2-6/2

Wanted to rent grass 2014 beyond 785-824-8092.
C 3/26-4/16

Want to buy: John Deere diesel engines, running or not. Call (785) 263-6275.
G 12/4-4/4

Junk batteries, non-ferrous metals and iron. Darrel Bowen. Phone 785-899-2578.
G tfn

Wanted: Yards to mow. Will also trim bushes. Chelle Cole. 785-871-0564. Norton.
N 4/9

Wanted to Rent: Grass for 20 to 60 Cow/Calf Pairs. Call Conrad Van Kooten, 785-854-8220 or Bryant Tharman, 785-302-1271.
N 4/9

Wanted: Grass to rent or purchase in Norton or Graham County. Contact Lee Hardy at 785-871-0832.
N tfn

SERVICES

PowerRaking-foreestimates call 785-460-1818 leave message.
C 4/2-4/9

There's hope for your family member to continue living in their home, every need met. Licensed, excellent Ref. Would love to be a part of your families care plan. Colby and surrounding area. Please call Bev 785-267-

7122 or Lorraine 785-443-5717.
C 4/2-4/9

I specialize & analyze the situation surrounding the environment. Pines, Deciduous, Evergreens, Shelterbelts, Fruit Trees, Cleanup, Removal, Nurseryman, Gardening, Landscaping, Shrubs & Yard Care. Dave's Tree Service 785-443-0994.
C 3/26-4/16

(785) 470-1061. THE NUMBER THAT SAVES YOU MONEY. Call the rest then call the best. Sauvage Remodeling and Construction. Years of experience. Please call me now.
O 3/26-4/2

Beckman Fencing for all your fencing needs specializing in barbwire pipe corrals, continuous fence, chain length, privacy fences, and concrete flat work. Contact Jared 785-

672-7607.
C 3/19-4/9

Tree Trimming & Removal Call Kerry @ Infinite Connections, bucket truck, stump grinder, insured and free estimates. Family owned and operated. 785-626-4261.
C 2/12-7/23

Almanza's Interior Services, Inc.. Drywall specialist. Drywall hanging, drywall finishing, texture and paint. Free estimates. References available. Spanish call (785) 332-5353. English call (785) 890-6223.
G 2/12-tfn

Hickert Enterprises LLC. Windmill repair and service. Tree trimming and removal. (785) 475-2729.
O 1/1-6/25

Burlington-Goodland area. Residential overhead door service and repair, 20 years experience. Call Gary at (719) 350-0705.
G 7/17-tfn

Do you have weeds every year? Want a great looking yard? Call JM Tree & Lawn Service to fill ALL of your needs this year. We offer full tree care and sprinkler system maintenance/installs as well. Call today to get a free quote. 785-462-6908.
C 5/22-TFN

Have a leaking roof and need it repaired? Look no further. Murray Roofing & Construction, LLC will give you a free estimate and roof inspection. We specialize in residential and commercial roofing systems. Call our office to schedule an inspection. 785-462-6908.
C 4/3-TFN

Call us before you pay your next insurance premium. American Family Insurance - Rita Peters Agency - Colby 785-462-8246.
C 1/25-TFN

CAT'S TNT for jewelry, material, vinyl graphic designs, massages, quilting and more! Stop by 1018 Main, Goodland, or call

(785) 890-2287 for more information.
G 3/28-tfn

Experienced with texturing, painting, cleanup/removal of clutter. Experience with Rental management experience. Have 16 ft. car trailer for rent. 785-462-5861.
C 3/25-TFN

Abel Tree Service-Fully insured, free estimates, stump grinder, bucket truck. Deep root fertilizer. 785-871-7275.
N tfn

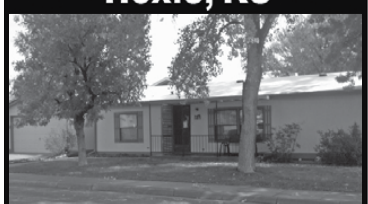
Dan is back! Dan Geschwentner. Small remodeling and repair jobs. Call 785-443-3673.
C 2/3-TFN

Steamway Carpet Cleaning Co. 1-800-292-9497. Lou Ann and Lyle Broz, Owners.
N tfn

Jacobs Service, your authorized Traeger Grill dealer. See our selection of grills, pellets, rubs and

spices at West Highway 36, Norton. Pellets are \$13.50 per bag EVERY DAY!
N tfn

1100 14th Street Hoxie, KS



REDUCED - \$69,900

This is a well kept 3 bedroom home located on a corner lot. All one level for your convenience. Has some nice shade trees, updated AC unit and new shingles on the roof. Ready to move in. To view this home give Mike a call!



Mike Scott
785-675-8556

HomeLand REALTY AUCTION

(785) 462-8255
www.HomeLandRE.com

1055 S. Range Colby, KS

1,440 ACRES IRRIGATED & DRYLAND CROPLAND, THOMAS & SHERIDAN CO, KS
"MULTI-PARCEL"
LAND AUCTION
TUES., APRIL 22, 2014 @ 10:30 AM, CDT

LAND LOCATION: See Map! **SIGNS WILL BE POSTED!**
MANNER OF SALE: This real estate will be offered as a "MULTI-PARCEL" auction in 9 individual tracts and in combinations of tracts. It will be sold in the manner that produces the highest aggregate bid. There will be OPEN BIDDING on all tracts and combinations of tracts during the auction as determined by the auction company. Bids on individual tracts, tract combinations, and the total property may compete. Auction procedure and increments of bidding are at the discretion of the auction company.
TERMS: 10% down day of sale, with the balance to be paid on or before May 22, 2014, or upon such terms as may be acceptable to the Sellers. Personal and corporate checks are acceptable for the down payment with the final payment to be made in certified funds. All funds will be held by the auction company in their trust account or by an identified title/escrow company. Bidding is not contingent upon financing. Financing, if necessary, needs to be arranged and approved prior to the auction. All bids are subject to Sellers confirmation. A 6% buyer's premium applies. Broker participation available - Call for details! **Announcements made day of sale take precedence over printed material and previously made oral statements.**
MINERAL RIGHTS: Sellers will retain 1/2 of the mineral rights for a term of 10 years, or for as long as productions, if any, exists. Minerals are believed to be 100% intact and are under a current oil and gas lease.
CROPS: Subject to the tenant's rights on the 2014 planted wheat crop and Buyer(s) will receive a 40% share of the crop at no expense to the Buyer(s). 40# on N, 5# of sulfur along with Rave, have been applied to the growing wheat.
FSA INFORMATION: All FSA farm program payments associated with the 2014 crop year will be subject to the new 2014 Farm Bill provisions. See chart below for FSA information.
CLOSING: Closing will be on or before May 22, 2014.
POSSESSION: Date of closing, subject to tenant's rights on the planted wheat crop. Buyer(s) will have the right to enter on the open land upon full execution of the contract and payment of the earnest money for general farming & irrigation purposes. All open acres have been sprayed with Roundup, Banvel & 2-4-D at no expense to the Buyer.
REAL ESTATE TAXES: Sellers will pay taxes for 2013 and prior years. Taxes for 2014 will be the responsibility of the Buyer(s). See chart below for 2013 taxes.
IRRIGATED ACREAGE: All irrigated acres have been in a corn and soybean rotation. This land has excellent yields.
AGENCY: Farm & Ranch Realty, Inc., its agents and representatives, are the *Exclusive Agents of the Sellers.*

IRRIGATION INFORMATION
TRACT 1: There is 1 irrigation well on this tract covered under Water Right File #29464 and is permitted for 274 AF at 560 GPM. Place of use for this well also covers Tract 2. The irrigation motor on this tract is the property of the tenant and is not included in this sale. It can be purchased for \$1,000.
TRACT 5: There is 1 irrigation well on this tract covered under Water Right File #7105 and is permitted for 960 AF at 1040 GPM. Place of use for this well also covers Tracts 6 and 7.
TRACT 6: There is 1 irrigation well on this tract covered under Water Right File #11083 and is permitted for 290 AF at 925 GPM. Place of use for this well also covers Tracts 5 and 7.
TRACT 7: The 1980 Reinke model 680 Sprinkler on this tract is the property of the tenant and is not included in this sale. It can be purchased for \$12,000.
In the event Tracts 2 and 7 sell separately, the Buyer(s) of those tracts will sign a quit claim deed at closing to transfer their undetermined interest in the water rights covering their respective tracts to the Buyer(s) of Tracts 1, 5 & 6.

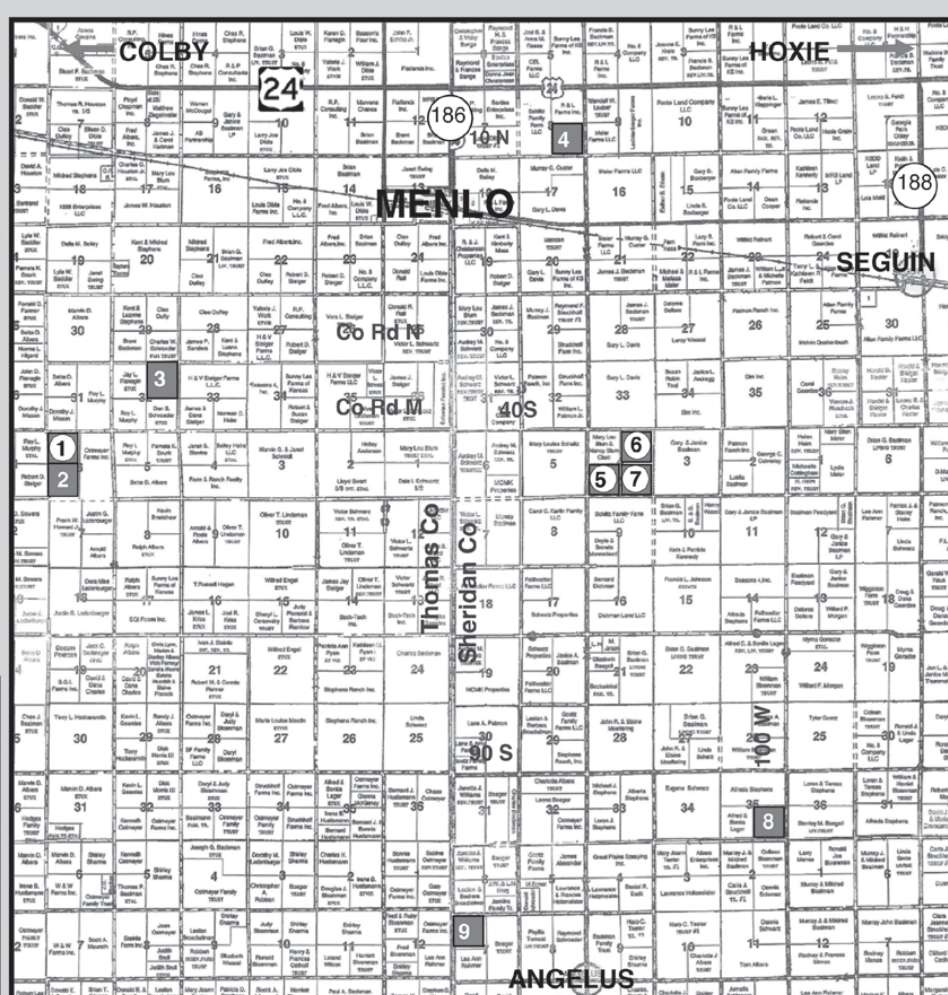
TRACT	LEGAL DESCRIPTIONS	AUCTION ACRES	ESTIMATED IRRIGATED CROPLAND ACRES	ESTIMATED DRYLAND CROPLAND ACRES	NOZZLE PACKAGE	PLANTED ACRES	WHEAT BASE/DCP YLD	CORN BASE/DCP YLD	SOYBEANS BASE/DCP YLD	2013 TAXES
THOMAS COUNTY										
1	NW/4 of 6-9-31	160.0	122.0	38.0	550	48.6	78.8/38*	171.0/129*		\$2,495.26
2	SW/4 of 6-9-31	160.0		160.0		152.0±				
3	NE/4 of 32-8-31	160.0		159.7			40.6/38	81.3/129		\$568.82
SHERIDAN COUNTY										
4	SE/4 of 8-8-30	160.0		158.8			78.3/38	39.1/129		\$658.64
5	SW/4 of 4-9-30	160.0	121.0	35.5	425	36.0±				
6	NE/4 of 4-9-30	160.0	121.0	35.5	450	36.0±	227.5/38*	179.8/129*	29.7/29*	\$4,563.32
7	SE/4 of 4-9-30	160.0	121.0	35.5	450	36.0±				
8	SE/4 of 35-9-30	160.0		157.8		78.8	39.4/38	78.8/129		\$608.94
9	NW/4 of 7-10-30	160.0		153.0		153.1	73.0/38	37.6/129		\$574.88
		1,440.0	485.0	933.8		540.5				

*All acreages & bases are estimated from FSA information & will be assigned by FSA in the manner the land sells at the auction.

AUCTIONEER'S NOTE: This is some of the finest cropland that Thomas and Sheridan County have to offer. Some of this land has been in the Schiltz Family since the early 1900's. The land is near the county line South of Hwy 24 and Menlo, Kansas. The land is near level and has been under minimum till for many years. The Schiltz Family has taken care of this property and it is very evident when you see it!
The water rights are combined on Tracts 1 & 2, and Tracts 5, 6 & 7. Should these tracts sell separately, some rules will apply concerning the place of use of the water. Contact the auction company for more information.
The sprinkler on Tract 1 is offset on to Tract 2 by about 200'. Should the tracts split, the Buyer of Tract 1 will have one year to move the sprinkler North so it does not infringe on Tract 2. There will be no survey provided as we are selling the entire quarter. Surveys, if desired will be the responsibility of the Buyer.
There will be an information meeting at 10:30AM on Thursday, April 3rd at the Farm & Ranch Realty, Inc. office located at 1420 W. 4th in Colby.

AUCTION LOCATION: CITY LIMITS CONVENTION CENTER, COLBY, KS

SELLERS: SCHILTZ FAMILY



INFORMATIONAL MEETING:
Thursday, April 3rd at 10:30 at Farm & Ranch Realty Office at 1420 W. 4th in Colby, Kansas

INTERNET BIDDING AVAILABLE!
Register by April 10, 2014 to bid online!
Call for details!



For a virtual tour visit www.farmandranchrealty.com

FARM & RANCH REALTY, INC.
1420 W. 4TH • COLBY, KS 67701
TOLL FREE - 1-800-247-7863



DONALD L. HAZLETT

BROKER/AUCTIONEER

"When you list with Farm & Ranch, it's as good as SOLD!"



Septic Tanks Pumped and systems installed. Call Logan Septic and Water. 785-543-7772.

N tfn

A&S Plumbing 24/7, 20 years experience. No job too big or small, fully insured. Ask about our 10% discount for parts and labor for first time customers. Spencer Stevens, owner. 785-664-8180.

N tfn

Keiswetter Lawn Care, Mowing, raking, and edging. We do it for you! 785-877-2771.

N 4/30

I AM DOING ROTOTILLING and aerating. Norman Morrow. 332-3424 or 772-7409. 13-16.

SFH 3/27-4/17

HARDWICK'S PAINTING and property preservation. Interior and exterior painting, barn and wood restoration. Fully insured. Free estimates. Harwickspainting.com or

call Don at 308-423-2730. 13-15.

SFH 3/27-4/10

BECKMAN Carpet Cleaning: Truck-mounted steam cleaning. Carpets, upholstery and autos. Call (785) 626-4548.

SFH tfn

FOR RENT

NEW RENTALS- Quality & Affordability Sheridan Estates- Hoxie 1-2 bedroom available Stockton- newly open apartments. Cimarron- 1-2 bedroom available Phillipsburg- newly opened apartments Norton- duplexes 2 Bedroom all new available 1st of April *OPEN HOUSE : Thurs March 27th 4-8pm No age or income restrictions, all handicap accessible, appliances including W/D and much more. Contact Vicki Babcock with Bainter Housing at (785)657-1006

O 3/26

3 bedroom, 1 bath house in Goodland. Recently remodeled. References checked. Call (785) 821-3093.

G 3/26-4/2

Storage Units For Rent - Different sizes available. Call 785-443-8658. Colby. C 3/12-4/16

BUSINESS SPACE at 120 W. 11th St. in downtown Goodland. Weekdays call (785) 899-4631 or (785) 899-5687.

G 3/12-4/12

Houses and apartments in Goodland. All sizes. Call for details. (785) 890-6538.

G 1/15-tfn

For rent: 2 bdr. apartment, close to downtown Oberlin, city bill paid, \$350 per month plus \$350 deposit. Contact Johnson Realty, Inc. (785) 475-2785.

O 11/13tf

2 bedroom apartment,

Brookwood Apartments, Oberlin, (785) 475-3450. O 36tf

Downtown office space available at 5th and Franklin, Colby. Call 785-462-3939. C 9/19-TFN

One bedroom apartments available to rent in Norton. Contact: Lacy Frack, PHM Executive Director, Norton Housing Authority KS034, Phone 785-877-2714; Fax 785-877-2577.

N tfn

Independent living apartments at Prairie Meadows and Bieber

Cottages in Norton now available for persons 55 years and above. For more information about these comfortable living apartments, call Administrator Nancy McGinnis, phone 785-877-2601.

N tfn

Houses & Apartments. Cole Real Estate in Goodland 785-899-2683.

G tfn

FIFTH STREET APARTMENTS in Bird City has for rent two-bedroom duplex apartments. Applications must income

qualify. For information contact N.W. Kansas Housing, Inc. at (785) 421-2151 or pick up an application at Century II in Bird City. We offer Equal Housing Opportunity and are handicap accessible.

SFH tfn

REAL ESTATE

Vintage Home - Grinnell, KS, 2,014 sq. ft., double size corner lot, 4 bed, 2 bath, original woodwork updated, red metal roof, fenced, city utilities. 102 Jefferson, Grinnell, 785-462-0027. C 4/2-4/23

Specials for the week March 28-April 3

Drinks included. Dine-in or carry out!

- Friday, March 28: Shrimp Alfredo
- Saturday, March 29: Sloppy Joes
- Sunday, March 30: Pan Fried Chix
- Monday, March 31: Meatloaf
- Tuesday, April 1: Chix/Rice Casserole
- Wednesday, April 2: Fajitas
- Thursday, April 3: Lasagna



Jct. of Hwys. 27 and 40, Sharon Springs, Kansas • Phone: 785-852-4664

Rory Bedore - Owner
(785) 443-3261
Pat Sloan
(785) 462-2703
Marilyn Meyer
(785) 443-4032
Toni Lindberg
(785) 443-1653
Rock L. Bedore
(785) 443-0136
Tom Harrison
(785) 672-0429
Jerry Wycoff
(785) 675-8556
Mike Scott

(785) 462-8255
1055 S. Range
PO Box 508
Colby, KS

HomeLand REALTY AUCTION

NEW LISTING

425 W. 5th
4 BR/2.5 Bath
Give Pat a call today!

Residential Lots \$14,000 to \$19,000
205 W. Main, Jennings \$37,800
1115 Cty Road R, Levant \$45,000
305 Wilson, Winona **SOLD**
170 S. School \$52,500
621 Cornell, Oakley \$59,500
419 Colby Ave., Oakley **CONTRACT**
820 S. Garfield **CONTRACT**
101 S. Penn Ave., Jennings \$65,000
605 W. 7th, Oakley \$69,500
1100 14th, Hoxie \$69,900
730 S. Grant **CONTRACT**
1954 Cty Road 9, Levant \$92,000
2099 Cty Road CC **CONTRACT**
207 S. Monroe, Grinnell \$100,000
425 W. 5th \$134,500
120 E. Plum \$147,500
250 E. Ash \$161,900
1035 Villa Vista Dr. \$175,000
1040 Villa Vista Dr. \$198,500
1807 Harvey Court \$249,500

www.HomeLandRE.com

GRINNELL, KS

207 S. Monroe
3 BR/2 Bath
Call Jerry today!

COMMERCIAL LISTINGS
Commercial building site 1-10 acres North of I-70 on Willow Avenue East of Whistle Stop. Give Tom a call today!
63 Acre parcel or 2-6 acre lots located along I-70 frontage, Colby, KS. \$17,000/acre Call Marilyn!
Colonial Steak House Oakley, KS - CONTRACT

AG LAND LISTINGS
1,600 Acres Prime Cropland Logan County, KS - CONTRACT
160 Acres Thomas County Cropland w/several shop buildings, grain storage, and cattle facility - 3 West and 4 South of Colby, KS. \$760,000 (can be split) Call Rock for details!
120 Acres Logan County Cropland - SOLD
160 Acres CRP Sherman County Land - \$1,750/Acre Call Tom!
160 Acres Sherman County Irrigated Cropland - \$3,000/Acre Call Tom!

Let Our Agents Work for You!

KETTERL'S 5K ANGUS

Calving Ease Growth

SELLING REGISTERED YEARLING ANGUS BULLS

Final Product

Vernon Ketterl
(785) 475-3636

SIRES INCLUDE
Upside
Consensus 7229
Basin Excitement
Renegade
Final Product
Really Windy

Really Windy

Todd Ketterl
(785) 470-7208

All with top carcass performance

CONSIGNMENTS OF AREA FARMERS & RANCHERS

WESTERNAUCTIONANDREALESTATE.COM AUCTION

Friday, April 11, 2014 @ 11:00 am CT
Western Auction, W. HWY 36, St. Francis, KS

TRACTORS-TRUCKS-TRAILERS-MACHINERY-LIVESTOCK-TOOLS

TRAILERS
2004 Wildwood LE Travel Trailer, 5th Wheel, 28' Very Clean, interior & exterior photos online, VIN 4X4FWDD294R331778
2001 Diamond D 3 Horse Slant Trailer, Gooseneck, tandem axle, 3500# axle, rubber mats, floor in great condition, 6'x16', VIN 4FGL0162X2H048146
1976 Western Grain Trailer, 42'x8', Shurlock Hopper Trailer, tandem axle, double hopper, VIN 862875
18' Flatbed Car Trailer w/ 2' dove tail ramps, 83" wide bumper pull, 3500# tandem axle, 225-75-15 tires, No Title
Bumper Pull Trailer, No Title
16' Flatbed Trailer w/ 2' Dove tail w/ ramps, tandem axle, 16" tires, bumper pull
8'x28' Donahue Machinery Trailer

TRUCKS
1990 Chevrolet Kodiak Fuel Wagon, 454 gas motor, 5 spd/2 spd trans, 302,750 miles, 5 compartment fuel storage (500/400/400/300/200 gal), VIN 1GBL7H1P0J234321
1987 Ford F700 Truck, Single Axle, 5 spd/ 2 spd trans., on propane, 11'x8' flat bed w/ 1500 gal poly water tank w/ gooseneck 5th wheel hookup, VIN 1FCNF70H2HVA46328
1980 Chevrolet Truck w/ 20' Knapsheide Steel box & hoist, steel floor, 52' sides, Westfield drill fill auger, roll over tarp, 366 motor, gas, 5 spd/2 spd trans, tandem axle, 9,00-20 tires, 54,667 miles, VIN C17D-BAV127349
1980 Chevrolet 60 Series Truck, V-8, 366 motor, 15.5' Steel Box & Hoist, 5 spd/2 spd trans., on propane, 9,00-20 tires, 49,999 miles, VIN C16D8AV147434
1980 Chevrolet 70 Custom Deluxe Truck, 366 motor, 16' steel box & hoist, 5 spd/2 spd trans., on propane, 79,699 miles
1965 Dodge 500 Truck, 318 motor, 4 spd/2 spd trans., 16' box & hoist, steel sides, wooden floor, 83,300 mi., VIN 10115050

TRACTORS & ATTACHMENTS, CRAWLER
1978 4640 John Deere Tractor w/ 20.8-38 axle mount duals, 3 pnt, triple hyd., 8802 hrs
1981 John Deere 750 Tractor, diesel, w/ 3 cylinder engine, 4 spd trans w/ high low, 540 PTO, 9.5-24 tires, 673 hrs, front wheel assist, w/ 5' belly mower. Mower SN M00160X575152, Tractor SN 07503001521
4' John Deere Rototiller, 540 PTO, SN M00550X110670
516 John Deere 5' 3 point, Mower, SN W00513X007799

MACHINERY & LIVESTOCK EQUIPMENT
40' Quinstar Lazer II Plow w/ Quinstar pickers, L25-40, SN 9804-0097
1987 Haybuster Tub Grinder, Model H1100, SN 8712081
Bear Cat Grinder Mixer, SN 599, Model 101, 100 bu. Portable Oswalt Roller Mill w/ 27" rolls, 540 PTO 18' Krause Tandem Disc, Model 1056, SN 1679

SHOP ITEMS, TOOLS, MISC.
600 watt Power Plant w/ 16 hp, B & S Motor
Wards Power Lite Power Plant w/ Gas Motor, 115-220 volt, 3500 watt, Model 305PBW-3R-AB, SN 75X25646
Acetylene Torch w/ Bottles & cart
(2) Wisconsin Motors SN 5283799 & 3512858
Sears Air Compressor, B & S Motor, gas, 5 hp
Cherry Picker 12T Hyd. Jack
Wood Bolt Bin Motor Stand Metal Cabinet
14' Dog Pen Tool Box Poly Tool Box
Old Furnace & Hot Water Heater
25 Sheets Propenal, Red
Vise Log Chains Come Along Allen Wrenches
Black & Decker Battery Charger 100' Tape
End Wrenches Screw Drivers Hammers
Hand Plane Alternator Generator Checker
Craftsman Plane Sockets, Ratchets Tap & Die
Cream Can Air Bubble Scoop Shovel Pump, Model 150

TANKS
(2) 150 gal. Poly Tanks 1000 gal Diesel Tank
1000 gal Propane tank, underground, top fill
500 gal Anhydrous Tank on trailer, top fill
250 gal. Propane Tank on trailer, top fill
Misc. Propane Tanks, 50-100 gal.
L-Shape Pickup Fuel Tank, 120 gal w/ 12 volt GPI Pump, Model 150

MOTORCYCLE & MORE
1969 Honda 90 Motorcycle Honda 3 Wheeler
International Cub Cadet Mower
2 Snowmobiles

Western Auction & Real Estate, LLC
785-332-8990
westernauctionandrealstate.com
P.O. Box 928 - St. Francis, KS 67756
Betty L. Petersen, Broker
Skip Petersen 785-332-8221
Sales Agent & Auctioneer
Robin A. Petersen 785-332-5586
Associate Broker & Auctioneer
Brett Petersen 785-332-7121
Ks. Agent & Auctioneer

AuctionTime.com

Fredrickson Insurance Agency

As a new year begins make sure your family is protected. We all have goals for our children but what would happen if you weren't there to provide for them? Fredrickson Insurance Agency can assist you with all of your life insurance needs.

183 S. Penn Ave Oberlin, Kan.
(785) 475-3883

Fredrickson Insurance Agency
785-475-3883

"We sell insurance but specialize in service."
fredricksoninsuranceagencyinc.com



1979 Corvette Coupe

Great Condition!

\$12,900



2011 Corvette 3LT

Coupe

\$39,500



2000 Corvette Convertible

Sharp!

\$21,500



2012 Chevy Camaro

1129B

\$24,900



2001 Ford Mustang

8599D

\$4,500



2008 Chevy Malibu

Ltz, Sunroof

8805C

\$13,995



2008 Chevy Cobalt

2LT

8783B

\$8,750



2007 Chrysler 300C

8760A

\$15,900



2007 Mercury Milan

8962D

\$6,900



2006 Chevy Impala

1163A

\$9,750



2004 Nissan Altima S

8839B

\$6,500



1995 Chevy Monte Carlo

Mechanics Special

8783B

\$1,500



Landoll 7431-33' VT

8760A

\$58,900



Krause 2452-33' Disc

25569A

\$16,900



Sunflower 6630-32' VT

25659A

Sabre Blades

\$49,500



Landoll 7431-29' VT

24145B

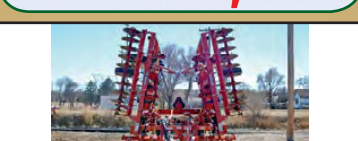
\$48,900



Case IH 330-35' VT

24191A

\$35,900



Krause 6200-24' Landsman Finisher

24192B

\$39,900



Landoll 9630-34' Field Cultivator

25654A

\$39,000



Krause 6324-24' Landstar

9033A

\$32,000



Sunflower 6432-30' Finisher

25663A

\$25,900



Krause 3121A-21' Landsman finisher

23354A

\$9,950



New Holland 31' Packer

23359A

\$12,950



McFarlane 12R30 Stalk Chopper

24088C

\$12,500



Unverferth 310-12R30 Ripper/Stripper

23314B

\$28,900



Top-Air 1600 Gallon Sprayer

20024A

\$57,900



Landoll 5530-30' Grain Drill

23369A

\$65,900



Landoll 5210-20' 3-Ponit Drill

25645A

\$44,900



Quinstar 42' Fallowmaster

25645A

\$26,500



John Deere 455-30' Grain Drill

New Blades, Excellent Shape

25645A

\$28,900



2008 Buick Enclave CXL

AWD, Navigation-DVD-Sunroof

8195B

\$21,500



2005 GMC Yukon

XL SLT, Navigation-DVD-Sunroof

9051B

\$14,900



2006 Toyota Highlander

Limited Hybrid 4x4, Navigation-Roof

8920B

\$14,500



2002 Toyota 4-Runner SR5

Sunroof

8938C

\$7,950



2003 Ford Windstar

SE

8442C

\$4,850



2011 Chevy Silverado HD2500

Z71 4x4, Duramax

9126A

\$36,950



2011 Chevy Silverado 1500

Z71 4x4

9016A

\$28,900



2011 Chevy 1500

4x4

9102A

\$18,950

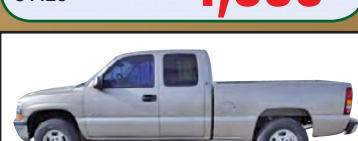


2009 Chevy Silverado 1500

LS 4x4

8764A

\$18,900



2002 Chevy 1500

4x4

8937B

\$9,995

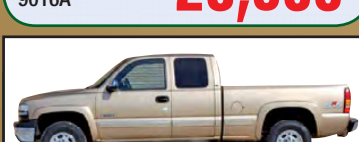


2002 Ford F250

XL 4x4

8830A

\$7,850



2000 Chevy Silverado 2500

LS 4x4

9078B

\$9,500

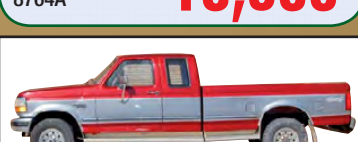


2000 Ford F-350

SD XLT Flatbed 4x4, 7.3L Powerstroke

9078B

\$8,950



1997 Ford F250

XLT 4x4, 7.3L Powerstroke

8634B

\$5,850



2006 Ford Ranger

Fx4 4x4

7693E

\$12,500

HARCHELROAD MOTORS, INC.

Wauneta & Imperial, Nebraska
 (308) 394-5555 • Toll Free (877) 862-4389
www.harchelroadmotors.com



4 bedroom, 2 bath home in Colby well taken care of with many upgrades. 421 Smith Drive, call 785-650-3276. C 4/2

GOODLAND HOME FOR SALE: 102 Circle Drive. 4 bedroom, 2.5 bath, 2 car garage, corner lot. Call (308) 225-1027. G 3/26-4/26

HOUSE TO PURCHASE: 2-3 bedrooms, 1-2 bathrooms with shower. Kitchen, living room, dining room, finished basement, garage. 785-332-2284. 12-14. SFH 3/20-4/3

REAL ESTATE SERVICES

It pays, not costs to use our services. For all your auction and real estate needs contact Duane McEwen at 785-877-3032. Homerange Real Estate, Broker Gary Richards. N tfn

Make the Weiser Choice - Contact Weiser Realty for all of your real estate needs at 785-877-2185. Jolene L. Weiser, Broker; Samantha M. Hager, Sally Nelson, Robert Wyatt, salespersons. N tfn

Professional Service Listing and Selling your property. Contact Larry Riggs, Broker or Jeanette Krizek, Listing Agent. 785-678-7163. Kansasland Realty and Auction. N tfn

FARM SERVICES/ EQUIPMENT

Disc Rolling—Rolling on the farm. Call Ron Lewis, Eustis, NE. 308-486-3501. N tfn

VEHICLES/ RECREATION
1998 Chry. Van \$650 Call Les Lahman 785-443-2884. C 4/2
1992 GMC Jimmy high miles, needs TLC. 2000 Chevy Malibu high miles, needs head gasket. Pre-pended school car. \$1,500 for both. OBO. Will separate 785-443-4000. C 3/26-4/9

For Sale - 10' Pond Prowler 2 man bass boat. \$750.00 with trolling motor and good battery. 785-202-0107. N 4/2

LIVESTOCK
Charolais and Charolais Red Angus cross bulls. BBB Charolais, Oakley, KS (785) 672-4145. O 3/5-5/28
Mader Hereford. Hereford bulls for sale. Call Wilma Mader (785) 675-8351, Keith Bowie, (785) 675-1198, Shane Bowie (785) 475-4404. O 2/5-5/28

PLANT A TREE

First shipment of trees have arrived (they are dormant)

Also just arrived Potatoes • Onions

Regular hours begin April 15 so please call ahead 785-462-6355

MOONLIGHT GARDENS

CITIZENS MEDICAL CENTER SPECIALTY CLINIC

100 E. College Drive, Colby, KS 67701-3799 (785) 462-7511; Fax (785) 460-4876
TO SCHEDULE AN APPOINTMENT PLEASE CALL (785) 460-1223

April 2014

Sun	Mon	Tue	Wed	Thu	Fri	Sat
		1 Larsen	2 **Sharma **Volz	3 Reeves	4 Frankum	5
6	7 Alkousakis **Clifford	8 **Fields Hatzidakis Huston	9 Kobitary Pham Tirre	10 **Freeman Keats Nagamani Pham	11 Keats	12
13	14 **Curry	15 Bazaz Birney **Fisher	16 Forschner **Lee	17 **Abuerreish Reeves **Werth	18 Frankum	19
20	21 Foot Clinic Huston	22 **Fields Holmes	23 **Annest Korman **Volz	24 **Lee	25 **Clifford	26
27	28 **Freeman Huston	29 **Curry	30 **Werth			

FAMILY PRACTICE

FAMILY CENTER FOR HEALTH CARE
 785-462-6184
 John Dygert, D.O.
 Kelly Gabel, D.O.
 Sarah Gabel, D.O.
 Darren Matchell, D.O.
 Brewster Kellogg, D.O.

CONSULTANTS

ALLERGY/IMMUNOLOGY
 Board Certified
 **Michael Volz, M.D.
CARDIOLOGY
 **Christine Fisher, M.D.
COUNSELING SERVICES
 Meier Clinic - Angie Witman
DERMATOLOGY
 Theo Alkousakis, M.D.
DIABETES
 **Mid-America Diabetes
GASTROENTEROLOGY
 Jeffrey Huston, M.D.
GYNECOLOGY
 David Forschner, M.D.
HEMATOLOGY/ONCOLOGY
 **Sameh Abbuerrish, M.D.
 **January Fields, M.D.
NEUROLOGY
 Khoi Pham, M.D.
OPHTHALMOLOGY
 **William Clifford, M.D.
 William Keats, M.D.
ORTHOPEDECS
 Rajesh Bazaz, M.D.

ORTHOPEDICS

Timothy Birney, M.D.
 Admodios Hatzidakis, M.D.
 James Holmes, M.D.
 **Sukchan Lee, M.D.
 Kevin Nagamani, M.D.
 Ted Parks, M.D.
 **Vivek Sharma, M.D.
OTOLARYNGOLOGY
 (Ear, Nose, Throat)
 **Jerold Cossette, M.D.
PLASTIC SURGERY
 Conrad Tirre, M.D.
PODIATRY
 Steven Larsen, D.P.M.
 James Reeves, D.P.M.
PULMONARY (Chest)
 Majd Kobitary, M.D.
RHEUMATOLOGY
 David S. Korman, M.D.
GENERAL SURGERY
 Charles Frankum, M.D.
UROLOGY
 **Wallace M. Curry, M.D.
 **Darrell Werth, M.D.
VASCULAR SURGEON
 **Stephen Annest, M.D.

** Dr's do their own scheduling **

WOOFER PUMP & WELL INC.
 1024 Oak Ave.
 Hoxie, KS 67740

Office Phone 785/ 675-3991 Fax: 785/ 675-3990
 Shop Phone 785/ 675-3023 E-mail: woofpw@ruraltel.net

Irrigation, Domestic, Geothermal & Environmental Services

- Irrigation Pump Repair
- Irrigation Well Drilling
- Domestic Well Drilling & Repair
- Environmental Drilling
- Windmill Repair
- Solar Systems
- Geothermal Pump Systems



For all your irrigation needs call: Lance Shepard (785) 675-8376



Better Health • Better Life



Tri Valley Health System is proud to announce that General Surgeon W. Thomas Sorrell, MD of Kearney Clinic PC will be serving patients in Southwest Nebraska and Northwest Kansas on a weekly schedule for all your general surgery needs.



Surgical services miles above NOT MILES AWAY

1.800.732.5505
 www.trivalleyhealth.com



Get the latest *Star-News* on your electronic devices



Online access to The Goodland Star-News faster than Postal Service

We want *Star-News* customers to know we continue to depend on the United States Postal Service for delivery to most of our customers, but we have an alternate and more timely way customers can receive and read *The Goodland Star-News* on a regular basis. We have joined with **MediaPass** to allow customers access to the editions of the *Star-News* through our web page, and with one download

customers have all the pages of each edition shortly after they are printed on Tuesday and Friday of each week. You can use your personal computer, a tablet, laptop or even a smart phone to keep yourself up-to-date on the happenings around town. For those currently receiving the *Star-News* in the mail we offer a free trial to access the online newspaper editions. Signing up online through the

MediaPass system allows a customer to purchase a three month, six month or one year subscription. For the free online trial contact Sheila Smith at the *Star-News* office (785) 899-2338 or by email to star.news@nwkansas.com.



The **Goodland Star-News**

1205 Main St., Goodland, Kan., 67735 • Phone (785) 899-2338

YOST



800-524-9678 785-332-2188 yostford.com
 Sales Manager - Brent Rueb • Rell Zimelman - Sales Agent



Use your Smart Phone to scan our Bar Code for complete inventory

Like us on Facebook Yost Ford



New 2014 Ford Flex SEL Package - Leather - Seats 7 - Ruby Red Metallic Rides great! Looks Great! Great Gas Mileage!! Selling at Invoice 0% interest

Stop By - Try out this new Flex

The New yostford.com at the New Yost Ford

PASTURE WANTED

GRASSPASTUREWANTED to rent, Mark Hilt. 785-332-2054. 303-638-5107 (cell). 11-16.
SFH 3/13-4/17

GRASSPASTUREWANTED to rent, Adam Jones, 785-332-6206.
SFH tfn

GRAIN/FEED

Round cane bales, 1,500 lbs. Good protein, low nitrate. Round millett bales, 1,500 lbs. Good protein, low nitrate. NW Sherman County. Call (785) 399-2498.
G 3/26-4/9

FOR SALE

2006 Timphe high cube commodity, 43x102x78, 1 owner, super singles, good condition, used very little last 4 years \$27,000. 308-289-1506
C 4/2-4/9

Sweet Vidalia Onions - arriving May 1. Order now 785-462-3981 Hi-Plains Shrine Club \$10/10 pounds.
C 4/2

8" Delta table saw and 16" Glastron Boat with trailer 115HP Johnson engine, Oberlin (785) 475-2962
O 3/19-4/2

1948 Philco Radio/Phonograph cabinet, good condition. Both radio and phono work. \$100.00. Call (719) 350-0705.
G 1/1-tfn

For Sale: A slightly used wood pellet fireplace insert and 20 bags of Pellets. This Timber Ridge Pellet Fireplace Insert is an efficient heating upgrade with a beautiful bay design and EPA certification. U.S.A. 45-lb. hopper provides up to 24 hours of warmth. User-friendly control panel with auto start, works with masonry or zero-clearance fireplaces. Minimum opening required: 36in.W x 16in.D x 21in.H. Asking \$2000.00 O.B.O. Please call for more information at 785-475-3510.
O 11/6TF

Third row seats for GMC Yukon. Two pieces, gray leather, good condition. \$300 OBO. Call or text (785) 202-0607 or (785) 470-1188.
O 11/6TF

2 Harley Davidson die cast models. 1-1:10 scale Hot Wheels HD Softail. 1-1:10 scale Maisto FLSTS Heritage Springer. Still in original boxes! Call Gary at (719) 350-0705.
G 9/25-tfn

AWP tool belt/pouches with kidney belt and suspenders. Paid \$100 plus, asking \$50. Call Gary at (719) 350-0705.
G 9/25-tfn

FIREWOOD FOR SALE in Goodland. Call (785) 890-7224 or (785) 821-2814.
G 12/12-tfn

For Sale - 6' Restored Oak Antique Showcase with leaded glass top. \$300.00. 785-693-4201.
N 4/2

For Sale or Rent - Small parcel on black top, storage or shop building, grainary and corrals. 785-877-3416.
N 4/2

Rubber stamps, custom made, The Country Advocate, 1205 Main. Goodland, Kansas. (785) 899-2338.
G tfn

KANSAS CLASSIFIEDS

Auctions

APRIL 4 & 5 DRAFT HORSE & MULE SALE. Buggies, Horse drawn equipment, wagons, Horse/Stock trailers, Amish handcrafted cedar furniture Welch Livestock Exchange Welch, Oklahoma 918-788-3994 - 417-309-9352

For Sale

SPRING IN to Mid-America Piano to see our wide selection of affordable new and like-new pianos. Grands, verticals and digitals from \$35/month. 800-950-3774. www.piano4u.com.

Help Wanted

Anthony, Kansas is seeking

Water/Wastewater Operator. High School Diploma/GED and valid driver's license required. Applications and complete job description: www.anthonykansas.org. 620-842-5434. EOE. Open until filled.

Help Wanted

Can You Dig It? Bulldozers, Backhoes, and Excavators. 3 Week Hands On Training Provided. Become Nationally Certified. Lifetime Job Placement Assistance. GI Bill Eligible! 1-866-362-6497

Help Wanted

"Partners In Excellence" OTR Drivers APU Equipped Pre-Pass EZ-pass passenger policy. 2012 & Newer equipment. 100% NO touch. Butler Transport 1-800-528-7825 www.butlertransport.com

Help Wanted/Truck Driver Drivers- \$\$ STOP BUMPING DOCKS \$\$ Be Home more with CTS. Regional Runs has you home weekly! Great pay & benefits. Only 3 trucks left! Call Kevin 877-325-4996 ext 211. Central Transportation Services www.ctsco.com

Help Wanted/Truck Driver Exp. Flatbed Drivers: Regional opportunities now open with plenty of freight & great pay! 800-277-0212 or driveforprime.com

Help Wanted/Truck Driver Experienced Class A OTR DRIVERS, Clean MVR, Run the Midwest & West Coast, No East Coast, Scheduled Home Time, No Touch Freight, New Kenworth T660, Competitive Pay & Benefits. Call 800-645-3748

Help Wanted/Truck Driver EXPERIENCED DRIVER OR RECENT GRAD? With Swift, you can grow to be an award-winning Class A CDL driver. We help you achieve Diamond Driver status with the best support

there is. As a Diamond Driver, you earn additional pay on top of all the competitive incentives we offer. The very best, choose Swift. • Great Miles = Great Pay • Late-Model Equipment Available • Regional Opportunities • Great Career Path • Paid Vacation • Excellent Benefits Please Call: (602) 714-9455

Misc. For Sale

WORLD'S LARGEST GUN SHOW - April 5 & 6 - Tulsa, OK Fairgrounds. Saturday 8-6, Sunday 8-4. **WANENMACHER PRODUCTIONS.** Free appraisals. Bring your guns! www.TulsaArmsShow.com

Sporting Goods

GUN SHOW APRIL 5-6 SAT. 9-5 & SUN. 9-3 TOPEKA KANSAS EXPOCENTRE (19TH & TOPEKA BLVD) BUY-SELL-TRADE INFO: (563) 927-8176

CARD OF THANKS

We want to thank everyone for the cards, flowers, visits and prayers during Carolyn's recovery. Your support has been very encouraging and we appreciate it more than you know. Carolyn has moved to Prairie Senior Living Complex - 1625 S. Franklin, Room 101, Colby, KS 67701 and continues to improve. God bless you all!! - *Herbert & Carolyn Schritter and Family*
C 4/2

I had a wonderful 95th birthday. I would like to thank everyone for the cards, flowers and gifts. I enjoyed them all. God Bless You. - Veda Heisel
N 4/2

I would like to thank all of the church prayer chains and individuals who prayed for me before, during and after my heart surgery. I also wish to thank all those who came to visit me, sent cards, well wishes and flowers. I am recovering in a timely manner. Praise the Lord! God Bless You! - Larry Taylor
N 4/2

AUCTIONS/SALES

Brown's Consignment Auction - Sunday, April 6, 10 a.m., Hoxie 4-H Building. Extra large auction booked. Antiques, collectables, old coins, furniture items, household items, fishing items, shop tools, cutting torch, welder, yard tools and much more. May 4th another large auction booked. 785-675-3767 Mickey Brown.
C 4/2

Estate Sale: March 1-March 31. Twice Sold Treasures, Norton, KS. New items daily.
N 3/26

NOTICES

BURLINGTON GUN & COIN SHOW. Burlington, CO. Friday and Saturday, April 11-12, 2014, Burlington Community Center, 340 S. 14th Street. Friday from 9 a.m. to 5 p.m. MT and Saturday from 9 a.m. to 4 p.m. MT. Admission \$3 adults, 12 & under free with adult supervision. For more information please call (719) 346-7623.
G 3/26-4/2

Tri Valley Health System is proud to announce that Plastic Surgeon Kenneth "Kenny" Fischer, MD of Plastic Surgery Clinic, Manhattan Kansas has joined Tri Valley and will be serving patients in Southwest Nebraska and Northwest Kansas in April 2014.

- Botox® Treatments
- Cosmetic Surgery
- Dermal Fillers
- Reconstructive Surgery

Call 1.800.732.5505 To schedule an appointment with Dr. Fischer.

Just In-Special Hard-to-Find Units

2009 Buick Lucerne CXL5 White, Leather, Local, Low Miles	2009 GMC Sierra 2500HD White, 3/4 ton, 6.0L, like new, local
2012 GMC Yukon Denali 4WD Gray, Leather, Nav, Sunroof, DVD, local	2013 Kia Optima LX AT Black, Cloth, off lease
2014 Jeep Grand Cherokee White, Leather, Sunroof, Limited, Nav.	2013 Dodge Grand Caravan White, Cloth, DVD, Stow & Go

FINLEY MOTORS, INC.
1520 Highway 27, Goodland, KS 67735 • Toll free: (800) 525-3701 • "Your volume & variety dealer!"
WWW.FINLEYMOTORSINC.COM

Hail the power of BACON!

Try our new **Bacon Clubhouse Burger!**

A quarter-pounder with flavorful beef seasoning, or our premium grilled or crispy chicken patty,

applewood smoked bacon, white cheddar cheese, caramelized grilled onions, farm fresh tomato, crisp leaf lettuce and our special sauce on our new artisan roll.

GOODLAND LOCATION ONLY • OPEN DAILY 6 A.M. TO 11 P.M.

Machinery - Tractors - Trucks

Rick & Kathy Frisbie, sellers

Saturday, April 5 • 10 a.m. (Storm date: April 12)
Sale Site: From McDonald, KS: 6 miles north, 1 mile east, 1/4 miles north, Signs will be posted

Shop tools and equipment, guns, farming equipment, tractors, trucks and much more.

FOR MORE INFO & PICTURES VISIT <http://midwestauction.com>

Since 1969

RAMBAT AUCTION
785-426-2049 Bird City, KS Cell: 785-332-0452

320 ACRES IRRIGATED & DRYLAND LAND AUCTION CHEYENNE COUNTY, KS

SELLER: Neil Schritter

Wed., April 16, 2014 @ 10:30 AM, MDT

AUCTION LOCATION: Community Center at the Firehouse, Goodland, KS

LAND WILL BE OFFERED IN 2 TRACTS AND IN COMBINATION

LEGAL DESCRIPTIONS:
TRACT 1: SW/4 of 36-5-42
TRACT 2: SE/4 of 36-5-42

This is excellent irrigated and dryland cropland located on the Cheyenne & Sherman County line North of Kanorado.

Immediate possession to the Buyer - All of the dryland acres are in wheat and Buyer receives 100% of the crop!

INTERNET BIDDING AVAILABLE!

For a virtual tour visit www.farmandranchrealty.com

FARM & RANCH REALTY, INC.
1420 W. 4TH • COLBY, KS 67701
Toll Free 1-800-247-7863
DONALD L. HAZLETT
Broker/Auctioneer

"When you list with Farm & Ranch, it's as good as SOLD!!"

GUN & COIN SHOW

April 12 - 13, 2014

Burlington Community Center
340 S. 14th Street • Burlington, CO 80807

Saturday: 9 a.m. - 5 p.m. ~ Sunday: 9 a.m. - 4 p.m.

12 & Under Free (Must be accompanied by an adult)

Sponsored By: Hide-Away at Cameron Lane, Inc. * **Tables \$25.00**
501C3 Non-Profit Recreational Horse Riding

For more information contact John Hansen at 709-346-7623 * **Raffle Drawing**

MULTI-TRACT AUCTION
1,021± Acres Yuma Co. Colo. Real Estate

WED., APRIL 23 ♦ 9:30 AM MT

Grass, Home & Imp., CRP & Minerals
Cobblestone Inn & Suites - Wray, Colo.
Goodman Family, Sellers

TRACTS #1 - #4 CRP & Mineral Rights
Located in 1N-45W, Sec. 3; 7 mi. W. of Wray
Tract #1 - 159± Ac. CRP; NE¼, less 1 ac.
Tract #2 - 160± Ac. CRP; SE¼,
Tract #3 - Mineral Rights for Tract #1; Producing Gas Well
Tract #4 - Mineral Rights for Tract #2

TRACTS #5 - #9 Grassland/Homesites
Located in 2N-44W, Sec. 33 & 34;
2 mi. West & 2 mi. North of Wray
Seller's Mineral Rights Included
Tract #5 - 40± Ac. Grass/Homesite; Borders County Rd. 37
Tract #6 - 40± Ac. Grass/Homesite; Borders County Rd. 37
Tract #7 - 40± Ac. Grass/Homesite; Borders County Rd. 37
Stock Well & Bottomless Tank
Tract #8 - 40± Ac. Grass/Homesite
Tract #9 - 240± Ac. Grass; Live water in SW corner

TRACTS #10 & #11 Riverbottom, Bluffs, Grassland, Home & Improvements
Located in 1N-44W, Sec. 10, 11 & 15;
1 mi. West of Wray bordering Hwy 34
Seller's Mineral Rights Included
Tract #10 - 62± Ac. Scenic Riverbottom & Bluffs Grass
Tract #11 - 240± Ac. Republican Riverbottom, Scenic Grass & Bluffs, Home & Improvements; Includes 1,634 sq. ft. 2-bedroom, 2-bath home, shop, 3+ bay garage; Domestic/Stock Well

Watch our website for details or call for sale bill!

Buyer Information Meetings & Open Houses

Friday, April 4th
3 - 7 p.m. MT
& Friday April 18th
3 - 7 p.m. MT
both on location
28960 HWY 34, Wray

SHAY REALTY, Inc. Reese W. Shay, Listing Broker
970-630-5006 - Reese@ShayRealty.com
www.ShayRealty.com

GET ROLLING INTO SPRING WITH A NEW RIDE

2008 FORD F-150 SUPERCREW

Harley Davidson Edition, 4X4, Heated Leather Seats, Sunroof, Sat. Radio, Reverse Camera, Local Trade



ONLY!! \$25,995

2008 FORD F-150 SUPERCREW

XLT Pkg 4X4, Trailer Tow Pkg, Reverse Camera, Pwr. Seat, Keyless Entry, Low Miles, Local Truck



ONLY!! \$22,500

2012 RAM 1500 CREW CAB

Short Box, Laramie Long Horn Pkg, Hemi 4X4, Heated and Cooled Seats, Navigation, Sat. Radio, Reverse Camera, 12,000 1-Owner Miles



ONLY!! \$33,500

2010 RAM 1500 CREW CAB

Short Box, Laramie Pkg, Hemi 4x4, Heated and Cooled Seats, Built In Tool Boxes, Trailer Tow Pkg, Touch Screen, Radio Sat. Radio, Sunroof, Loaded Local 1-Owner



ONLY!! \$29,500

2010 FORD F-150 SUPERCREW

Short Box, Lariat Pkg, 4X4, Heated and Cooled Seats, Sat. Radio, Trailer Tow Pkg, Keyless Entry, Pearl White, New Tires, Clean Local Trade



ONLY!! \$27,500

2006 DODGE RAM 2500 MEGA-CAB

Short Box, Laramie Pkg, 5.9 Cummins Turbo Diesel, 4X4 Automatic, Heated Leather Seats, Pwr. Sunroof, Keyless Entry, Loaded Clean Local Trade



ONLY!! \$22,900

2006 FORD F-350 CREW CAB

Long Box, Lariat Pkg, Diesel 4X4 Auto, Heated Leather Seats, Sunroof, FX4 Pkg, Keyless Entry, Extremely Clean Local Trade With A New Factory Engine



ONLY!! \$16,500

2003 CHEVROLET 1500 HD CREW CAB

Short Box, V-8 4X4, Trailer Tow Pkg, Alloy Wheels, Keyless Entry, Dual Climate Control, Leather Seats, Spray In Bedliner, Clean Local Trade



ONLY!! \$9,995

1995 DODGE RAM 1500 REG-CAB

Long Box, St. Pkg, V-6, Run's and Drives Great, Local Trade



ONLY!! \$1,895

1999 DODGE RAM 3500 EXT- CAB

Long Box, Dually, Cummins Turbo Laramie Pkg, Diesel 5-Speed Manual, Leather Seats, Jake Brake, New Tires, Clean Local Trade



ONLY!! \$8,995

2001 FORD TAURUS SES

V-6 Keyless Entry, Pwr. Seat, Alloy Wheels With New Tires, Clean Local Trade



ONLY!! \$2,900

2002 NISSAN EXTERA SE

V-6 Automatic 4X4, Alloy Wheels, Keyless Entry, Trailer Tow Pkg, Local Trade



ONLY!! \$4,995.00

2013 JEEP GRAND CHEROKEE

Limited 3.6L V-6 4X4, Heated Leather Seats, Navigation, Touch Screen Radio, Reverse Camera, Sat. Radio, Remote Start, 20" Wheels, Panoramic Sunroof, Loaded



ONLY!! \$33,995

2013 FORD EXPLORER XLT

4X4, 3RD Row Seating, Rear Heat and A/C, Keyless Entry, Sat. Radio, Sync., Reverse Camera, Remainder Of Factory Warranty



ONLY!! \$26,500

2012 FORD FOCUS SE

4 Cyl Automatic, Keyless Entry, Sat. Radio, Remainder Of Factory Warranty



ONLY!! \$13,750

2008 DODGE NITRO SXT

V-6 4X4 Automatic, Alloy Wheels, Trailer Tow Pkg, Keyless Entry, Sat., Radio, Very Clean Local 1-Owner 25,000 Miles



ONLY!! \$13,800

2000 JEEP CHEROKEE SPORT

4.0L 4X4 Automatic Pwr. Windows and Locks, Run's, and Drives Great, Local Trade



ONLY!! \$4,295

1998 FORD F-150 EXT- CAB

4-Door, Long Box, XLT Pkg, V-8 4X2, Alloy Wheels With New Tires, Bedliner, Trailer Tow Pkg, Keyless Entry, Very Clean, Local Trade



ONLY!! \$4,295

2010 CHRYSLER TOWN & COUNTRY

LX Quad, Seating With Rear Heat and A/C, Touch Screen Radio With Reverse Camera, Sat. Radio, DVD, Pwr. Seat, Keyless Entry, Extremely Clean Local Trade



ONLY!! \$11,900

2002 CHEVROLET TRAILBLAZER LTZ

V-6 4X4, Heated Leather Seats, Onstar, Trailer Tow Pkg, Alloy Wheels With New Tires, Local Trade



ONLY!! \$4,900

1999 FORD RANGER XLT

Pkg V-6 4X4, Automatic, Step Side Ext-Cab 4-Door, Keyless Entry, Alloy Wheels, CD Player, Clean Local Trade



ONLY!! \$4,595

2011 DODGE RAM 2500 MEGA CAB

Short Box, Laramie Pkg, Diesel 4X4 Auto, Heated and Cooled Seats, Touch Screen Radio With Reverse Camera, Sat Radio, Navigation, Spray In Bedliner, Integrated Jake Brake, Clean Local 1-Owner



ONLY!! \$36,895

2012 CHEVROLET CRUZE 1LT

Keyless Entry, XM and Onstar, Dual Climate Control, Alloy Wheels, Local 1-Owner 17,000 Miles



ONLY!! \$14,995

2010 DODGE AVENGER SXT

V-6 Keyless Entry, Sat. Radio, Dual Climate Control, Pwr. Seat, Clean, Local Trade, 57,000 Miles



ONLY!! \$9,995

2010 DODGE AVENGER R/T

Heated Leather Seats, Alloy Wheels, Pwr. Sunroof, Rear Spoiler, Keyless Entry With Remote Start, Sat. Radio, Touch Screen Radio, Local 1-Owner



ONLY!! \$13,500

2008 FORD EXPEDITION XLT

4X4, Heated Leather Seats, Rear Heat and A/C, 3RD Row Seating, Alloy Wheels, Trailer Tow Pkg, Clean Local 1-Owner



ONLY!! \$12,900

1999 JEEP GRAND CHEROKEE LAREDO

6 Cyl 4X4, Alloy Wheels With New Tires, Keyless Entry, Pwr. Seat, Very Clean Local Trade



ONLY!! \$4,595

2008 CHEVROLET AVEO

4 Cyl Automatic, Run's and Drives Great, Excellent MPG'S



ONLY!! \$2,495

1996 HONDA ACCORD LX

4 Cyl Automatic, Pwr. Windows & Locks, Run's and Drives Great



ONLY!! \$1,590

2002 LINCOLN TOWN CAR

Signature Series, Leather Interior, Keyless Entry, Alloy Wheels, Local Trade



ONLY!! \$3,595

2013 CHEVROLET 1500 REG-CAB

Long Box, LS Pkg, V-8 4X4, Keyless Entry, Alloy Wheels, Very Clean, Local 1-Owner 17,000 Miles



ONLY!! \$24,595

DEVENY

CHRYSLER Jeep DODGE RAM
Honda • Yamaha

401 East B Street
McCook, NE
308-345-5200
800-345-0031