

Let the **Gorilla** help sell your stuff



If you're planning a garage sale, be sure it's in **The Country Advocate**

Invite the 900-pound Gorilla to help with your garage sale. You'll have more customers, sell more stuff and make more money. That means more in your pockets at the end of the day, and less junk to haul off to the dump.

How does it work? Simple. While the paper reaches most families in the town, The Country Advocate goes all over northwest Kansas. It reaches 41,860 readers in 11 Kansas counties, plus parts of northeastern Colorado and southwest Nebraska.

That's why it's the 900-pound Gorilla of Northwest Kansas Advertising, reaching more homes and more people than any other publication, broadcast station, cable system, Internet page or advertising medium.

Reader after reader has tried The Advocate for their advertising. The results?

Stuff sells. People drive for miles to find a good sale. They don't want to walk away empty-handed. The Gorilla works.

Your newspaper makes it easy for you to be in The Advocate. Just call or stop by and place your ad. You'll be surprised how easy it is, and how affordable. You'll be surprised — and happy — when your phone starts to ring or people show up at your door.

But call today. Deadline for The Advocate is noon Friday, ONE WEEK BEFORE a weekend sale. Sure, you can get an ad in the paper later, but it won't be the same. Call the Gorilla.



**COLBY
FREE PRESS**

155 W. Fifth Colby, Kan. 67701
(785) 462-3963

**THE NORTON
TELEGRAM**

215 S. Kansas, Norton, Kan. 67754
(785) 877-3361



THE OBERLIN HERALD

170 S. Penn Ave., Oberlin, Kan. 67749
(785) 475-2206

**The
Goodland Star-News**

1205 Main, Goodland, Kan. 67735
(785) 899-2338

Bird City Times

Box 220, Bird City, Kan. 67731
(785) 734-2659

The Saint Francis Herald

Box 1050, St. Francis, Kan. 67756
(785) 332-3162

AUCTIONS/AUCTION SERVICE

WEDNESDAY, FEBRUARY 19, 2014 - 480 +/- Graham County, KS Farmland Acres. Auction Time: 2:00 p.m. Auction Location: Cowboy Junction, 2649 280th Avenue, Hill City, Kansas. Selling will be two Tracts. Tract No. 1: The South Half (S 1/2) of Section Twenty-two (22) Township Six (24) South, Range Twenty-four (24), West of the Sixth P.M., being 320 acres more or less, Graham County, Kansas. Tract No. 2: The Northwest Quarter (NW 1/4) of Section Twenty-seven (27), Township Six (6) South, Range Twenty-four (24), West of the Sixth P.M., being 160 acres more or less, Graham County, Kansas. Sellers: Michael and Jeffrey Moffet. Auction Conducted by: Weiser Realty, Jolene Weiser Broker; Robert D. Wyatt, Auctioneer; 214 E. Washington, Norton, Kansas 67654, Phone 785-877-2185. N 2/19

NOTICES

Struggle with fine lines and wrinkles, discoloration, uneven skin texture, enlarged pores, aging or loose skin, NeriumAD can help you. Featured on CBS, The View, and The Doctors, NeriumAD can help you. NeriumAD Open House Saturday, Feb. 22 at 1, 3 and 5 p.m., Sunday Feb. 23 at 2 and 4 p.m., 1150 S. Franklin, Lot #12 or call 785-443-1458. C 2/19

Two Day Sale! Children's Clothing & Equipment Consignment Sale: Friday

& Saturday, March 21-22, Colby 4H Building. Interested in selling your high-quality, gently-loved children's and maternity items? Deadline to sign: March 12th. Contact thechildrenscloset@yahoo.com, Denise at 785-221-2659 or on Facebook. C 2/19

Plum Creek Ltd. - Colby Winter Clearance 40% OFF - New Spring Arriving Daily! C 2/19-3/5

STAG AND STAGETTE SUPPER! Thursday, Feb. 20 from 5:30-7:30 p.m. MT at Goodland VFW Post #1133. Serving mountain oysters, ham scalloped potatoes, vegetables, rolls, tea and coffee. Dessert will be cheesecake. Everyone welcome! G 2/19-2/19

TEMPUR-PEDIC MODEL CLOSEOUT EVENT! Save up to \$300! Colby Furniture and Home Store, Colby, KS. (785) 460-6311. G 2/19-3/19

MAGIC CARPET. 10% off cleaning carpet and furniture all of February. Call (785) 890-6422 or (785) 821-0062. G 2/19-2-26

Brule, Neb. Gun Show. Brule Activity Center. February 22 and 23. Saturday from 9 a.m. to 5 p.m., Sunday 9 a.m. to 4 p.m.. Drawing for 2 Ruger handguns. Call (308) 287-2528 for more information. G 2/12-2/19

Help for Abused women and children. Open 24 hours a day, seven days a week. Call Northwest Kansas Shelter,

800-794-4624. SFH tfn

HEAL THE WOUNDS OF ABORTION. Rachel's Vineyard retreats. Hays, Kansas, Feb. 21-23, call 877-447-4383; Denver, Colorado, Feb. 28 - March 2, call 303-410-1710. 06-07. SFH 2/6-2/13

FREE Informational Seminar. Bring your own laptop. Every Tuesday at 5:00 p.m. Mortensen Computer Services. N tfn

Steamway Carpet Cleaning Co. 1-800-292-9497. N tfn

Carpet Cleaning - 3 Room Special, only \$174.95! Dry-Foam safe & Green Seal approved. Serving NWKS mileage free since 1987. Call today: A+ Cleaners (785) 538-2526 or (785) 443-5400, Johnene Cheney. N 3/31

HELP WANTED

Looking for a way to increase your income working a few hours a week from home. Ask me about the Nerium opportunity and I can help you get started. Call 785-443-1458 or visit www.mitch2014.nerium.com. C 2/19

City of Winona needing full time help with city maintenance work. Send application to City of Winona P.O. Box 262 Winona KS 67764. For any questions phone 785-846-7442. C 2/19-3/12

CHEMICAL APPLICATOR NEEDED

Mid State Farmers Coop, Inc. is seeking applicants for an Applicator. The applicants must possess the following: a Class A CDL, 1A chemical applicator license, chemical applicator experience preferred, clean background with no felonies, and a good driving record. Mid State Farmers Coop, Inc. has competitive wages and benefits. Please send resume to PO Box 195, Rush Center, KS 67575 or Call 785-372-4239 for an application EOE.

NOW HIRING!

Front Desk Clerks; Cooks; Housekeeping; Servers; Maintenance

Flexible hours. Full and part-time positions available. Great benefits including insurance, vacation pay & 401K. Top pay. Certification bonus. Monthly bonus program. Employee discount at Penny's Diner. Excellent promotional opportunities, Dynamic training program. APPLY TODAY! 801 N. Highway 27. Front Desk Clerks/Van Drivers must have good driving record and be able to pass a drug test. (Junction of Hwy K-27 @ US-40) Sharon Springs, KS Phone: (785) 852-4664. (785) 852-4665-fax. sharonspings@mail.oaktreeinn.com



IT Specialist Full Time

Machinery Operator Full Time

Places cable for the purpose of ensuring service can be provided to customers desiring services from the company. Tasks may include operating machinery, locating utilities by shovel, and performing shop work and maintenance. Those interested must have a high school diploma; Class A commercial driver's license with a good driving record; utility construction experience is preferred.

If you know why a subnet mask is necessary, are comfy commanding multiple operating systems, and can handle several technical projects at once, we'd love to hear from you. Bonus points awarded if Python and Bash are in your vocabulary.

Candidates must have a Bachelor's degree or equivalent practical experience; understand networking fundamentals & mobile computer; have experience troubleshooting in an OS X, Windows, or Linux environment; excellent written & verbal communications skills; and able to maintain cooperative relationships.

Applications available at all S&T locations: Brewster, Colby, Dighton, Goodland, and Colby. See our website for more details. Drug testing required. EOE.

1-800-432-8294 | careers@sttelcom.com | www.sttelcom.com

Help Wanted

As United Plains Ag continues to grow, we have a full time position available.

Feedmill Operations / Delivery Driver

Elevator Operations

Must be able to acquire a Class A CDL License

Apply at United Plains Ag or Contact

Jeff Kahle, Patrick Gibbs or Lyn Lamm

at 785-852-4241 or e-mail at

jeff.kahle@chsinc.com
patrick.gibbs@chsinc.com
lyn.lamm@chsinc.com

EOE



Elevator Worker - Archer Daniels Midland Company (ADM), a world leader in agricultural processing, is currently seeking candidates for positions as elevator workers at our Oakley, KS location. Elevator workers will unload grain, perform clean-up work, perform some maintenance, and assist in other areas of grain handling. Flexibility to work overtime and weekends is required. Successful completion of a pre-employment drugscreen, physical and background check is required. Please apply online at www.adm.com/jobs. ADM is an Equal Opportunity/Affirmative Action Employer. C 2/19-2/26

Seeking persons to fill full and part time cashier positions for new retail business. Some computer skills and retail experience preferred. Call 785-621-2441 to schedule an interview. C 2/19

The Sheridan County Long Term Care Unit has an opening for a night RN or LPN. Apply to Becky Tate, RN at 785-675-3281 Ext. 146. C 2/19

Advantage Woodwork is a custom woodworking shop in the Colby area that specializes in European Wood

Pump Rig Operator

50K & Benefits

Apply at Western Sprinklers, Inc., 1100 S. Range Ave, Colby, KS.

Drug testing required.

HELP WANTED

We are hiring immediately for Housekeepers. Apply in person at Quality Inn.



1950 S. Range Colby, KS. 67701

& Aluminum Window & Door systems. We are looking for a full time production assistant. This person must be dependable, hard worker, and a quick learner. Pay is based on experience. Please email resumes and questions to advantagewoodwork.com. C 2/19-2/26

Great Benefits - The Colby Housing Authority is seeking applications for a full-time position in the Maintenance Department. Applicant must possess a high school diploma or GED equivalent; have a valid Kansas Driver's License and a driving record free of convictions for at least one year, and no felony convictions. We offer great benefits including optional health, dental, and life insurance, sick leave, vacation, and KPERs retirement benefits. Applications are available at the Colby Housing Authority

office, 600 S. Mission Ridge, Colby or call 785-460-6763 to request one by mail. This position will be open until filled. Equal Opportunity Employer. C 2/19

USD294 is taking applications for bus drivers for the 2014-15 school year. Applications are available at the District Office, 131 E. Commercial, Oberlin, KS. (785) 475-3805. USD 294 is an EOE. O 2/19-2/26

Trucking company has immediate opening for driver. Hauling grain, rock and sand Monday through Friday. Local hauling, home every weekend and paid weekly. Must have a class A CDL and good MVR with 2 years driving experience. Call for an appointment (877) 850-7285 or (785) 678-8041. O 2/19-3/5

FOR SALE

SOLID 25'X65' BRICK BUILDING, 1109 MAIN, GOODLAND, KS

MAIN LEVEL:

- Display window
- Reception area
- 2 offices
- Storage room
- Break room w/ cabinet/sink
- All carpeted (good)
- Handicapped restroom
- Forced air heating & A/C
- Rear parking & entrance
- Duro-Last roofing w/warranty (no leaks)

TOP LEVEL:

- 2 nice, totally furnished rental apartments

BASEMENT:

- Full dry basement with entrance from main floor
- Exterior basement entrance on east side of building

FOR MORE INFORMATION & SHOWING CALL: (785) 890-3443

Opening for TRUCK DRIVER

Required: high school diploma or equivalent, CDL with HAZMAT & Tanker endorsement, ability to operate a forklift. **Duties:** Deliveries, load and unload product, utilize a forklift, general warehouse duties.

Apply at Helena Chemical

6409 Road 25, Goodland, or call 785-899-2391

Excellent working environment, outstanding compensation & benefits. Pre-employment drug screening required. EOE M/F/V/H



Help Wanted

Warehouse/Delivery Position Available in Brewster, KS

This is a full-time position with competitive wages and a full benefits package. Applicant must have a CDL with HazMat & Tanker endorsements, or be able to obtain one.



EOE

Please send resume to: CHS Inc., PO Box 39, Brewster, KS 67732 E-mail: travis.goodheart@chsinc.com Apply in person at CHS-Brewster 181 Hwy 24 Brewster, KS

Join Our Team
Selling advertising for Nor'West Newspapers!

FULL TIME ADVERTISING EXECUTIVE

Work week is 40 hours. Computer skills are helpful but not required. Must have good communication skills, excellent customer service skills with attention to detail, and enjoy a fast-paced atmosphere.



SEND A LETTER AND RESUME TO: Kevin Bottrell, Editor, 1205 Main, Goodland, KS 67735 Email: kbottrell@nwkansas.com or apply in person. No calls please.

The **Goodland Star-News**
1205 Main, Goodland, KS 67735

Woofter Construction & Irrigation, Inc. is looking for a full time **Welder/Mechanic**

Benefits include:
Vacation, Blue Cross Blue Shield, Aflac, 401K

Application is available online at www.woofter.com or pick one up at 1965 Thielen Ave., Colby, KS

Tubbs & Sons Ford has 2 positions open. 1 full time Lube Technician pays up to \$14.00 per hour. Also have 1 full time Service Technician position open. Pay commensurate with skill level. Must have clean driving record. Benefits include paid vacation & profit sharing 401K.

Contact Chris Kraft at 785-460-6746; 1-800-369-3673 or fordcars@st-tel.net.

Loan Officer

Farm Credit is accepting applications for a full time position for a loan officer. Position requires a four year college degree in Agriculture, Business, Accounting, Economics, or related field. Prefer a minimum of 3-years agriculture lending, financial statement analysis, accounting or equivalent combination of education and experience. The successful applicant will have an understanding of agriculture production in North-west Kansas and will display strong communication and computer skills. Salary to be determined based upon qualifications, with benefit package provided. To apply submit letter of application and resume to Farm Credit of Western Kansas, PO Box 667, Colby, KS 67701 attention Mark Winger or email to mark.winger@fcwk.com. Applications accepted until position is filled.

Several open positions. Please apply in person at Motel 6 in Goodland.
G 2/19-2/26

Looking for leasers to add to our trucking company in Northwest Kansas. hauling grain, rock and sand in CO, KS, NE, TX, OK. Haul Monday through Friday, Credit Cards available for fuel and your convenience. Special program if pay own fuel. Paid every Friday, home every weekend. We do have some trailers available. Call for an appointment (877) 850-7285 or (785) 678-8041.
O 2/19-3/5

Make a difference with DSNWK! DSNWK is looking for reliable, caring individuals to provide support and teach daily living skills to adults with developmental disabilities in Atwood, KS during the evening. This is a full-time personal assistant position. Must pass KBI, SRS, and Child/Adult abuse

checks. Excellent benefit plan available. For more information, contact Denni at 785-626-3688. Apply on-line at www.dsnwk.org or mail resume to DSNWK, 208 S 4th St, Atwood, KS 67730. EOE
G 2/19-2/19

DSNWK is looking for an Individual Service Coordinator (Case Manager) to provide service coordination services for individuals with developmental disabilities in Northwest Kansas. Services are guided by a life plan developed to help the person live as independently as possible. Must pass KBI, SRS, and Child/Adult abuse checks. Excellent benefit plan available. This is a full-time work-from-home position. For more information, contact Nancy at 785-625-2521. Apply on-line at www.dsnwk.org or mail resume to DSNWK, PO Box 310, Hays, KS 67601.

EOE.
G 2/19-2/19
Looking for High School or College Student to work part time. Flexible hours, no nights or Sundays. 785-460-3244 Leave message.
C 2/12-2/19

Farm Bureau Financial Services is seeking a Field Claim Representative to investigate, evaluate and negotiate casualty claims in the Northwest KS territory. The ideal candidate will reside in/near Colby, KS. Candidate must have a college degree or equivalent experience; experience in auto body and mechanical repair preferred. For further information and to apply online, please visit www.fbicareers.com
C 2/12-2/19

CDL truck driver tanker required, local area, home every night. If interested call 620-874-0971.

C 2/12-2/26
Needed, CDL route/delivery drivers in the Colby area. Benefit package available after 60 days. For more information, contact Rick at 308-627-6815.
C 2/12-2/19

Full time and part time CMA and LPN positions available at Fairview Estates for our Growing Assisted Living Facility. Competitive wages, AFLAC, and good working environment. Apply in person, ask for Gary at 1630 Sewell Ave, Colby. 785-462-2154 EOE.
C 2/12-2/19

CDL driver wanted. Must have clean record. Home nights and weekends. Call (785) 821-0492.
G 2/12-2/19

Electrician with 3 years experience or journeyman's license needed for service technician, pump and pivot

irrigation work. Apply at Hitchcock, Inc. of Goodland or call (785) 899-5628 for more information.
G 1/29-2/19

Great Western Tire of Colby, Inc., 1170 S. Country Club Drive, is now accepting applications for all shop positions. Positions included, but not limited to, lube oil & tire, truck tire, service call, and alignment technicians. Experience required, but will train the right person. Valid driver's license is a requirement. Full time position includes competitive salary and benefits. Apply in person, EOE. Questions please call 785.462.2100.
C 1/15-TFN

Management Opportunity: Colby 24/7 Travel Store is currently accepting applications for a Assistant Manager and part-time or full-time cashiers. Compensation includes

base wage plus incentives totaling up to 30K, plus benefits including BCBS health and life insurance, 401K, and paid vacation. Apply online at www.24-7-stores.com or apply in person at Colby 24/7 Travel Store, 1980 S. Range.
C 1/15-2/5

Help Wanted: correspondent for Rexford. Send news via e-mail once a week. Paid by inch and receive free subscription to The Oberlin Herald.
O 1/30 tfn

PSI Transport is always looking for good company livestock and grain haulers as well as shop mechanics. Competitive pay, life/health/dental benefits and bonus program available. EOE.
(785) 675-3477.
G 6/15-TFN

The Country Advocate Service Directory

PLUM CREEK LTD
Downtown Colby • 785-460-1978

Men's Suits & Casual Wear
Missy & Women's Dress & Casual Clothing
Tuxedos by Jim's Formal Wear - Bridal Registry

Let us make your wedding & prom tux picture perfect!

SHOW YOUR MONEY WHO'S BOSS.


Shirley D Skolout
Mountain Plains Agency
1690 W. 4th St.
Colby KS 67701
Phone: (785) 460-6284
skolosi@nationwide.com

Don't let your money just sit around.
Take charge. Take action.
Talk to your Nationwide® agent about our range of financial solutions.

The Service Directory does the hard work for you!

Call your local newspaper today to find out how!

SPEEDLINER
Moonlight Liners
Spray-In Bedliners
Scott Gilmer
819 W. 8th • Goodland, KS 67735
(785) 890-5384
Evenings & Weekends



Langer Industrial Service
2022 County Road 11 • Levant, KS 67743 • 785-586-2208
Monday - Friday 8 a.m. - 5 p.m.

We pay cash up to for all scrap metal*

Brass • Copper • Aluminum • Batteries • Electric motors • Cars
• Combines • Farm Equipment • Prepared/Unprepared Iron and Tin
• Container Service • Off site baling and car crushing
• Limited pickup service available

Schedule deliveries after normal business hours by appointment when necessary
* Some Conditions Apply

LOCAL HEADSHOP IN BURLINGTON, CO!
The new age has arrived!

JANUARY SPECIAL: Mention this ad and get 10% off 1 item!

Medical card holders: 10% off 1 item • Veterans: 15% off 1 item
Now carrying pipe tobacco, cigarettes, cigars, hookah tobacco and vaporizers!
E-juice: 5 different MG in multiple flavors! Also carry nicotine & non-nicotine e-hookahs and e-juice

G&G Freds' Tobacco, Pipes & Accessories
All pipes & accessories intended for tobacco use.
415 14th, Burlington, CO • Beginning Dec. 26 Open 9 AM-7 PM
Phone: (719) 212-7048 or (719) 342-0503 (after hrs)

Celebrating 40 years in business!

Hot Brush
Michael S. Boyson

BANNERS - LETTERING - PINSTRIPES - ART

Award winning Quality signs since 1974
204 W. 4th Bird City, Kansas
785-734-2423

The Genuine. The Original.

Weathercraft Roofing & Overhead Door
Roofing - Sheet Metal & Overhead Door Contractor
813 Main ~ Goodland, KS

Randy Topliff
General Manager
785-899-3064
800-203-5691

MURRAY ROOFING & CONSTRUCTION

RESIDENTIAL • COMMERCIAL • INDUSTRIAL

Residential:
• Roofing
• Construction
• Remodels
• Blown in Insulation

Commercial:
-TPO, EPDM, Duro-Last, Modified, Fibered and Non-Fibered roof coatings.

Fully Insured, Bonded, Licensed and Covered by workman's Comp.

Office: 785-462-6908
Office Manager: 785-443-5708
Owner: 785-443-1339

Elite Dura-last Contractor
CHECK OUT OUR WEBSITE FOR MORE INFORMATION:
www.MurrayEnterprises.org

Paw Wash Pet Crematory
6445 Rd. 21, Goodland
Kathy Schermerhorn

Please leave message
CELL PHONE: (785) 899-4398
Private or Group Rate

Mobile Home Lots for Rent

\$175 Month
(includes water, sewer & storage shed)
FREE Month with approved application

Friendly Acres Mobile Home Park
1150 S. Franklin, Colby
Call 785-462-6445

Windy Plains Bike Shop
Professional bicycle repairs since 1978!
Parts, accessories and service for all makes.
Pick up and delivery available in Goodland!

TIRED OF FLATS? ASK ABOUT OUR NO FLAT GUARANTEE!

Harold Sneath
6085 Rd. 17
(785) 899-4786 • (785) 899-5858 (home)
Same day service on most out of town repairs!

KANSAS Insurance INC.
Formerly THOMAS County INSURANCE AGENCY

490 N. Franklin 785-462-3939

- Home & Auto
- Farm & Crop
- Business Insurance
- Boat, Motorcycle, RV

Dennis Tubbs
dtubbs@kansasins.com

Nationwide Agribusiness
On Your Side®

www.kansasins.com

Goodland Home Health, LLC
Sue McCracken, RN
655-B E. 22nd, Goodland, KS
Office: (785) 890-7658 • Cell: (785) 821-0050

We provide the best care for those individuals due to illness who are unable to care for themselves or their loved ones.


FARM & INDUSTRIAL PAINTING
Grain Bins, Barns, Morton Sheds, Barn Repairs, Metal Roofs

ALL COLORS! TRI-STATE PAINTING

Pat Castella
1-800-940-8289
leave message

FREE ESTIMATES!

Dr. Tom Barlow DENTIST
785-460-7538
Appointments Readily Available
505 H N. Franklin, Colby



Culligan
better water. pure and simple.®

- Drinking Systems • Water Softeners (Sales & Rentals)
- Water Coolers • Salt Sales & Delivery

Scheopner's Water Conditioning, Inc.
Goodland & Colby, KS • Toll free: (800) 536-2352

NEW SYSTEM PROFESSIONAL WINDOW CLEANING
(785) 462-6995
(800) 611-6735

www.MyWindowCleaner.net
Serving Colby since 1992!

Commercial • Residential • Free Estimates

Looking for wheat straw or damaged wheat to bale

Kroskob Brothers Farms
Custom Haying and Farming

Will Prepay to secure Acres
Call for Pricing
Brandon: 970-380-4256 or Travis: 970-380-6853

ARE YOU LOOKING for good, solid, employment with great benefits and also presents a challenge and is rewarding? Norton Correctional Facility is looking to hire Corrections Officers. Starting pay is \$13.61 plus shift differential pay. Benefits include health, dental and vision insurance, paid vacation, holidays, and sick leave, KPERs retirement, and much more. There are promotional opportunities which make it a great career choice. You may call the NCF Human Resource Office 785-877-6643 to obtain an application or apply online at www.jobs.ks.gov. The job flyers can also be viewed at this web site. On line applications can be emailed to ncfhr@doc.ks.gov.

N 3/5

Phillips County Retirement Center has full and part-time openings for LPNs or RNs, CMAs and CNAs. Excellent wages and working

conditions. Call (785) 543-2131 for more information or stop by to pick up an application.

N 2/26

Are you looking for a starting point to a professional career? The Valley Hope Association corporate office has an opening for an Accounting Administrator I. The position's primary duty is checking patient's insurance benefits and filing/collecting patient's insurance. Great growth potential and an excellent benefit package. Email resume to employment@valleyhope.org.

valleyhope.org. EOE. N 2/26

Open Position - Northern Valley High School Assistant Track Coach. Applications will be accepted until February 24, 2014. Job Application is available on the NV website. Contact: 785-669-2445 for more information.

N 2/19

Norton Valley Hope is now hiring a Full-time Cook and a Team Lead Housekeeper.

No experience necessary. Willing to train the right individual. Excellent working environment and great benefits! E-mail resume to employment@valleyhope.org or stop by the facility to fill out an application. EOE.

N 2/19

Almena Agri Services is looking for a full time Operations Technician. Almena Agri Services is an independently owned, full service agricultural business in Northwest Kansas. We

have a full time agronomist and an onsite Pioneer Seed Representative. Almena Agri Services also has a new, state of the art Chemical and Fertilizer Plant. The applicant will be involved with fertilizer, seed and grain. A CDL is required (or the ability to attain one within 90 days). An agricultural background is preferred but not required. Wages are based on the experience and qualifications of the applicant. Almena

Agri Services offers a full benefits package including Blue Cross/Blue Shield, paid holidays and vacations, and various bonuses. This is the ideal position for someone looking for diversity in the fields of Grain, Agronomy, Fertilizer and Chemicals. Send your resume to: P.O. Box 98, Almena, KS 67622 or call Rod at 785-669-2561.

N 2/19

DOOR & WINDOW REPLACEMENTS
SEAMLESS RAIN GUTTERS
GENERAL CARPENTRY REPAIRS
Ron Stucke
CUSTOM BUILDING
(719) 346-8840
CELL: (719) 349-8840

Antique, Collectibles, Misc. Auction
Larry Havel, seller
Sunday, February 23 • 10 a.m.
Sale Site: Atwood Fairgrounds, 4-H Building, Atwood, KS
Antique Furniture - Glassware - Dishes
Antique Hand Tools - Toys - Cast Iron Items
For More Info & Pictures Visit <http://midwestauction.com>
- Since 1969 -
RAMBAT AUCTION
785-426-2049 Bird City, KS Cell: 785-332-0452

It takes a considerable amount of people to do a CCC M/W Basketball Game.
Thanks to all these people for helping and being at our games this year.
Tony, Tara, Paige, Luc, Jade, Skylar, Paige, Sean, Allie, Brittney, Sarah, Christina, Anna, Mac, Matt, Breanna, Nakita, Carleigh, Rhiannon, Nicole, Michael, Berkley, Joelle, Marissa, Amanda, Katie, Rich and Staff, Katelyn, Shelbi, Haley, Eli, Austin, Fans, Randy, Dane, Michelle, Tracy, Tommy-the-Trojan, Michael, Andy, Elle, Sammy, John, Charles, Brian, Christy, RSVP, Ken, Mary, Sturdy, CCC Students, Chris, Sara, Kaiya, Myria, Parents, Pat.

The Country Advocate Service Directory

WANTED: DIRTY CARPET
IF YOU HAVE DIRTY CARPET, WE CAN STEAM CLEAN IT.
NO JOB TOO BIG OR TOO SMALL!
• Commercial/Residential
• Advanced Truck Mounted Steam Cleaning Equipment
• Water Damage Restoration
• FREE ESTIMATES
PRO FLOOR CARE
Carpet & Upholstery Cleaning
(785) 462-8313 or (800) 473-4138

Nancy LePell Bookkeeping
165 East 3rd - Colby, KS 67701
785-462-7428
Income Tax Preparation - Individual, Business and Estates
Accounting and Bookkeeping
Business and Financial consultation
Christy Griffith, RTRP Nancy LePell, EA, ChFC, CB
Working to bring you the best possible solutions

AMERICAN BUILDINGS
A NUCOR COMPANY
ERIC RICHARDSON CONSTRUCTION INC.
48515 SNEAD DRIVE, BURLINGTON CO 80807
SERVING EASTERN COLORADO AND WESTERN KANSAS
OWNER: ERIC RICHARDSON
SALES: MIKE RUHS
CALL FOR PRICING: 719-346-8230

BEAT THE WINTER BLUES!
\$10 off full set of highlights
10% off in-stock products
Amazing Hair & Nails
Melody Knudson: Owner/Operator
Lisa Roberson & Amber Barrie: Hair Extraordinaires
1016 W. Highway 24, Suite #2, Goodland • Ph: (785) 890-4440

NKBA
The Kitchen & Bath Professionals
• Kitchen Cabinets • Counter Tops
• Closets • Furniture • Commercial
• Entertainment Centers
• Custom Jewelry Closets
Mingo Custom Woods
1965 W. 4th St., Colby, KS • 800.320.2201
www.mingocustomwoods.com • 785.462.2200

BURLINGTON FAMILY DENTISTRY
Justin Evanson DDS, MD Oral Surgeon
Jason Ehtessabian DDS, FAGD, PC Fellow of the Academy of General Dentistry
Dr. Justin Evanson Dr. E
IV Sedation, Wisdom teeth removal, Implant placement, and Exceptional Comprehensive Dental Care for the Entire Family!
(719) 346-8266 340 14th St. Burlington, CO
www.burlingtonfamilydentistry.net

Questions about health care reform?
We have the answers.
You have new health insurance options, but which one is right for you? We can help you understand your options and select the right plan for you and your family.
I'm ready to help. Give me a call today!
Vernon Hurd
Farm Bureau Agent
550 N. Franklin Ave.
Colby, KS 67701
785-269-9511
www.VernonHurd.com
KANSAS FARM BUREAU The Voice of Agriculture
CoventryOne
Products available at Farm Bureau Financial Services
CHKS1765 Health Insurance plans underwritten by Coventry Health and Life Insurance Company. H240B-ML-1 (8-13)

FARM BUREAU FINANCIAL SERVICES
Insurance • Investments
Auto | Home | Life | Business | College | Retirement
When things go wrong, you need your insurance to go right. Contact me to see how our one deductible advantage can help provide you peace of mind when you need it most.
David Browne III
550 N Franklin Ave
Colby, KS 67701
785-462-3388

SCI Stephens Construction, Inc.
Serving NW KS for 44 years
Local contractor with reliable and experienced customer service. Specializing in agricultural, commercial and residential construction.
Lester Wood Frame and Butler Steel Frame Buildings
1260 S. Country Club Drive
Ph: 785-462-7571 Toll Free: 1-866-462-7571

Newbanks Pumps, Inc.
We sell the best and service the rest!
Water Well Drilling & Service
~ Irrigation wells ~ Domestic wells
~ Stock wells ~ Solar Systems
Curt Goble, Owner
Ph: (785) 899-6302 ~ Email: newbankspumps@gmail.com
CO #841 • KS #856 • Elec. Cont. #6127

The Decorating Co.
Interior Design Consultants
Irene Smith & Rochelle Kling
There's no limit to our imagination.
106 E. 11th, Goodland, KS 67735
(785) 890-5441
E-mail: decorco@st-tel.net

NOW available at Oasis Travel Center in COLBY...
Gunnysack Greeting Cards
"Cards that have the guts to tell it like it is"
Sarcastic & Silly
Very Blunt & Unusual
Not for the easily Offended
Created by Ellis, KS resident Tracy Augustine
Stop by to check out the wonderful selection or go online at www.gunnysackgreetings.com

HSI HOXIE STATE INSURANCE, INC.
824 Main, PO Box 378 Hoxie, KS 67740
115 S. State St. Winona, KS 67764
(785) 675.3263 - Fax (785) 675.3721

C.W. Beamgard Co. Inc.
SALES & SERVICES SINCE 1919
• New Vehicle Sales • Service
• Used Vehicle Sales • Windshield Pit Repair
• Parts • Tires
• Accessories • Towing Service
Monday - Friday 8-6, Saturday 8-Noon
785.626.3286
Fax 785.626.3717
210 State St. • Atwood, KS 67730

Superior Flooring and Furniture and Accessories
360 14th St., Burlington, CO ~ PHONE: (719) 346-7579
Dan and Myrna Troyer

ROOFMASTERS
Your Local Roofing Contractor
425 East Hill, Colby, KS
Licensed - Bonded - Insured
RESIDENTIAL 1-800-536-6642
Tamko Shingles 1-785-462-6642
GAF Shingles
Wood Shingles
Metal Roofs
COMMERCIAL
Rubber Single Ply
White TPO Single Ply
Built Up Systems
Modified Systems
Elastomeric Rubber Coating For Metal Roofs
FREE ESTIMATES

Meadow Lake Restaurant & Lounge
• Open to the Public •
Monday Nights \$1 Draws
Saturday Nights Prime Rib
MEADOW LAKE
GOLF COURSE & RESTAURANT
785-460-6443
1085 E Golf Club Rd. • Colby, KS

Norton Valley Hope is seeking a team player to join our nursing department as a Part-time Patient Care Aide. Some computer experience helpful. Competitive salary with shift differential included. Opportunity for growth in a wonderful working environment. Email resume to employment@valleyhope.org or stop by the facility to fill out an application. EOE. N 2/19

You're in great company! WE NEED YOUR SUPERVISORY EXPERIENCE! ARAMARK Correctional Services, the nation's leading provider of correctional food service, is looking for full time Food Service Supervisor(s) to work at Norton %Norton Correctional Facility. Leadership skills necessary, Food Service experience a plus. We offer competitive wages, attractive benefits, and opportunities for growth. Submission to a background check and drug screen is required. To join our team, please apply in person to: Norton Correctional Facility,

RR1, Norton, KS 67654. 785-877-6702, EOE/M/F/D/V. N 2/26

The Almena Irrigation District has a job opening for District Manager. This job will be a part-time position from March 1 to September 15 of each year. The job would consist of equipment, canal maintenance and water delivery. Applicant must be a self-motivated individual. Experience with a backhoe, tractor, and truck is needed. Excellent pay for the right candidate. Please send a resume to Craig Ingram, 220 W1100 Rd., Long Island, KS 67647 or for questions call Craig at 785-543-4055, Norman Nelson 785-874-8900, or Steven Cox 785-854-8019. - Board of Directors, Almena Irrigation District N 3/9

The Team at Kansasland Tire of Norton has an immediate opening for a service truck operator/general service person. Must have a valid drivers license. Competitive wages, 401k, insurance

and uniforms. Experience preferred, but not necessary, we will train. Please stop by at 11101 Rd E1, Norton and pick up an application or call 785-877-5181. EOE. N tfn

EAGLE TRAVEL STOPS, St. Francis. 2:30-10:30p.m. shift, 9.50 per hour, deli/register. Apply in person. 06-08 SFH 2/6-2/20

NUTRITION SERVICES ASSISTANT- Cheyenne County Hospital is currently hiring for a part time nutrition services assistant. The position is 30 hours a week with afternoon/evening shifts during the week and one weekend rotation during the month. The dietary aide position includes preparing and cooking food for patients, employees and visitors. You can pick up an application at the front desk or online at cheyennecountyhospital.com. Please send resume and application to Human Resources at Cheyenne County Hospital, 210 W First, St. Francis, KS 67756 or

call 785-332-2104 for more information. 06-08. SFH 2/6-2/20

REGISTERED NURSE, Full-time position available; night shift; twelve hour shifts. Successful applicants will possess a positive attitude, strong communication skills, and basic computer knowledge. Holiday and weekend rotation required. Cheyenne County Hospital offers competitive wages, paid CEUs, support for educational growth, and a comprehensive benefit package. Call or go online to learn more! www.cheyennecountyhospital.com; 785-332-2104 ext. 116-Human Resources. 07-08. SFH 2/13-2/20

WANTED

Want to buy: John Deere diesel engines, running or not. Call (785) 263-6275. G 12/4-3/4

Junk batteries, non-ferrous metals and iron. Darrel Bowen. Phone 785-899-2578. G tfn

Wanted to Rent: Grass for 20 to 60 Cow/Calf Pairs. Call Conrad Van Kooten, 785-854-8220 or Bryant Tharman, 785-302-1271. N 4/9

Wanted: Grass to rent or purchase in Norton or Graham County. Contact Lee Hardy at 785-871-0832. N tfn

SERVICES

Tree Service: Call Abel Tree Service LLC for tree spraying, tree removal, stump grinding, and trimming. Equipped with a bucket truck. In the Colby area now. Call 785-871-7275 now for free estimates. Satisfaction guaranteed. C 2/19-3/12

High LP Prices - consider an electric heat pump system to replace your LP furnace or supplement it. Call C.B. Heating, Colby, KS 785-462-2445. C 2/19

Tree Trimming & Removal Call Kerry @ Infinite Connections, bucket truck, stump grinder, insured and free estimates. Family owned and operated. 785-626-4261. C 2/12-7/23

AMERICAN IMPLEMENT 1104 W. Hwy. 24 • Goodland, KS 67735 (877) 320-4020 For after hours service call & select option. americanimplement.com

NEW 2014 Polaris RZR 900 XP 4

 #49580: Orange Madness. \$19,599

NEW 2014 Polaris Sportsman 550

 Magnetic Metallic, with EPS. \$8,399

2006 Polaris Sportsman 450

 #49361: 475 hrs. \$3,500

NEW 2014 Polaris Sportsman 550

 Camo with EPS, #50994 \$8,399

NEW 2014 Polaris Ranger 900

 Sage Green, #49882 \$13,799

NEW 2014 Polaris Sportsman 570

 Solar Red. #53084. \$6,199

NEW 2014 Polaris Ranger 900

 White Lightning with EPS, #52117 \$14,599

2008 Polaris Sportsman 800

 #42903
 EFI Sage Green, Front & Rear Brush Guards, Front & Rear Rack Extensions, 98.2 hrs., 1,094 miles \$6,300

NEW 2014 Polaris RZR 800S

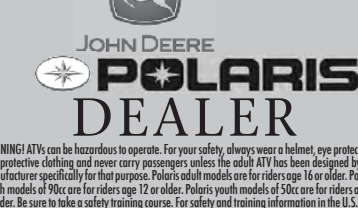
 White and yellow with EPS, #49624 \$14,999

NEW 2013 Polaris Sportsman 550

 Sunset Red, with EPS. \$7,999

2011 John Deere 825i Gator

 1,825 miles, 327 hours, #49718 \$10,800

JOHN DEERE POLARIS DEALER

WARNING! ATVs can be hazardous to operate. For your safety, always wear a helmet, eye protection, and protective clothing, and never carry passengers unless the adult ATV has been designed by the manufacturer specifically for that purpose. Polaris adult models are for riders age 16 or older. Polaris youth models of 90cc are for riders age 12 or older. Polaris youth models of 50cc are for riders age 6 or older. Be sure to take a safety training course. For safety and training information in the U.S., call the SMA at (800) 887-2887. You may also contact your Polaris dealer or call Polaris at (800) 324-3764.

HOXIE, KS

 1100 14th
 3 BR/2 Bath
 Give Mike a call today!
 Residential Lots \$14,000 to \$19,000
 205 W. Main, Jennings CONTRACT \$45,000
 1115 Cty Road R, Levant \$46,900
 305 Wilson, Winona \$59,500
 621 Cornell, Oakley \$60,000
 419 Colby Ave., Oakley \$60,000
 820 S. Garfield EXCLUSIVE \$65,000
 101 S. Penn Ave., Jennings \$69,500
 605 W. 7th, Oakley \$69,900
 1100 14th, Hoxie \$79,000
 985 E. 8th CONTRACT \$92,500
 1755 Lynda SOLD \$100,000
 730 S. Grant \$100,000
 2099 Cty Road CC, Gove \$165,000
 207 S. Monroe, Grinnell REDUCED \$175,000
 120 E. Plum \$179,900
 250 E. Ash \$198,500
 1035 Villa Vista Dr. \$249,500
 1130 Terrace Drive
 1040 Villa Vista Dr.
 1807 Harvey Court

WINONA, KS

 305 Wilson
 3 BR/2 Bath
 Call Tom today!

HomeLand REALTY AUCTION
 (785) 462-8255
 www.HomeLandRE.com
 1055 S. Range - PO Box 508 Colby, KS
 Rory Bedore - Owner
 Pat Sloan (785) 443-3261
 Marilyn Meyer (785) 462-2703
 Toni Lindberg (785) 443-4032
 Rock L. Bedore (785) 443-1653
 Tom Harrison (785) 443-0136
 Jerry Wycoff (785) 672-0429
 Mike Scott (785) 675-8556

OAKLEY, KS

 Price Reduced - \$69,500
 605 W. 7th - 6 BR/2 Bath
 Give Jerry a call today!
COMMERCIAL LISTINGS
 Commercial building site 1-10 acres North of I-70 on Willow Avenue East of Whistle Stop. Give Tom a call today!
 63 Acre parcel or 2-6 acre lots located along I-70 frontage, Colby, KS. \$17,000/acre Call Marilyn!
 Colonial Steak House Oakley, KS - CONTRACT
AG LAND LISTINGS
 1,600 Acres Prime Cropland Logan County, KS. 97% Keith Silt Loam soil. \$2,600/Acre. Call Rock for details!
 160 Acres Thomas County Cropland w/several shop buildings, grain storage, and cattle facility - 3 West and 4 South of Colby, KS. \$848,000 (can be split) Call Rock for details!
 160 Acres Logan County CRP - 15 South of Monument, KS. -\$1,250/Acre Call Rock for details!
 960 Acre Wallace County Grass Ranch - CONTRACT
 160 Acres CRP Sherman County Land - \$1,750/Acre Call Tom!
 160 Acres Sherman County Irrigated Cropland - \$3,000/Acre Call Tom!

Let Our Agents Work for You!

Colby High School Sports "Eagles on Radio" with Chad Jones

The Ride 100.3 FM KRDO

100,000 Watt FM Signal

Tune in for all your comprehensive news, weather, sports and all your favorite music hits.

Listen on-air...or on-line at www.nwksradio.com

KXXX The Ride 100.3 FM KRDO
 1065 S. Range • Colby, KS • 785-462-3305

Protect yourself for life's unexpected events



Let Amanda help protect you with a Long Term Care and Disability policy.

183 S. Penn Ave
 Oberlin, Kan.
 (785) 475-3883

Fredrickson Insurance Agency
 785-475-3883

"We sell insurance but specialize in service."
fredricksoninsuranceagencyinc.com

There's hope for your family member to continue living in their home, every need met. Licensed, excellent Ref. Would love to be a part of your families care plan. Colby and surrounding area. Please call Bev 785-267-7122 or Lorraine 785-443-5717.
C 2/12-2/19

I specialize and analyze the situation surrounding the environment. Pines, Deciduous, Evergreens, Shelterbelts, Fruit Trees Cleanup, Removal, Nurseryman, gardening, Landscaping, Shrubs and Yard care and Snow Removal. Dave's Tree Service. 785-443-0994
C 2/12-3/5

Almanza's Interior Services, Inc.. Drywall specialist. Drywall hanging, drywall finishing, texture and paint. Free estimates. References available. Spanish call (785) 332-5353. English call (785) 890-6223.
G 2/12-3/12

Hickert Enterprises LLC. Windmill repair and service. Tree trimming and removal. (785) 475-2729.
O 1/1-6/25

Burlington-Goodland area. Residential overhead door service and repair, 20 years experience. Call Gary at (719) 350-0705.
G 7/17-tfn

Do you have weeds every year? Want a great looking yard? Call JM Tree & Lawn Service to fill ALL of your needs this year. We offer full tree care and sprinkler system maintenance/installs as well. Call today to get a free quote. 785-462-6908.
C 5/22-TFN

BECKMAN Carpet Cleaning: Truck-mounted steam cleaning. Carpets, upholstery and autos. Call (785) 626-4548.
SFH tfn

Have a leaking roof and need it repaired? Look no further. Murray Roofing & Construction, LLC will give you a free estimate and roof inspection. We specialize in residential and commercial roofing systems. Call our office to schedule an inspection. 785-462-6908.
C 4/3-TFN

Call us before you pay your next insurance premium.

American Family Insurance - Rita Peters Agency - Colby 785-462-8246.
C 1/25-TFN

CAT'S TNT for jewelry, material, vinyl graphic designs, massages, quilting and more! Stop by 1018 Main, Goodland, or call (785) 890-2287 for more information.
G 3/28-tfn

Experienced with texturing, painting, cleanup/removal of clutter. Experience with Rental management experience. Have 16 ft. car

trailer for rent. 785-462-5861.
C 3/25-TFN

Need someone to answer your phone when you have to be out of the office for a day, a few days, or weeks? Telephone and message service only. No skills. Call 877-3101.
N 2/26

Abel Tree Service-Fully insured, free estimates, stump grinder, bucket truck. 785-871-7275.
N tfn

Meet Lynn Hoelting



Lynn Hoelting
1610 Main
Goodland, KS
(785) 899-2378
lynnhoelting.fbfs.com

See how he can help make it simple to protect your family, home, car and business. Call today.



Securities & services offered through FBL Marketing Services, LLC, 5400 University Ave., West Des Moines, IA 50266, 877/860-2904, Member SIPC, Farm Bureau Property & Casualty Insurance Company*, Western Agricultural Insurance Company*, Farm Bureau Life Insurance Company*/West Des Moines, IA. *Affiliates *Company providers of Farm Bureau Financial Services M022M-ML-1 (4-13)

RICHARDSON'S HOMESTEAD REALTY AND AUCTION

SPRING AUCTION SCHEDULE

Tuesday, March 18: Greeley County Land Auction for the Abbott Trust. In Tribune, KS.

Saturday, March 29: Retirement farm equipment auction for Vernon & Sally Patten. Watch for sale bills.

Saturday, April 5: Annual Spring consignment auction at the Homestead Auction Lot.
Call early with your consignments.

For more information or to schedule your spring sale contact Terry Richardson at 785-899-8094.

Consign items online at:
www.goodlandhomestead.com/auctions

NORTHWEST KANSAS Foundation for HOPE

The Foundation would like to extend their sincere thank you to everyone who supported us in 2013! Our Annual New Year's Eve Benefit was again a great success! In 2013, over \$20,000 worth of grants were awarded to 30 individuals in Northwest Kansas.

The Foundation supports cancer families in Cheyene, Decatur, Gove, Logan, Rawlins, Sheridan, Sherman, Thomas and Wallace counties.

For more information or an application, please contact:
NW KS Foundation for HOPE
PO BOX 187, Colby, KS 67701-0178
Email: nwks-hope@st-tel.net
Website: www.nwks-hope.org

Cattlemen's Choice Bull Sale

February 26, 2014 • 1:00 p.m. CST
Oakley Livestock • Oakley, KS



Selling: 70 Head of Black and Red Balancer, Gelbvieh, Angus and Red Angus Bulls -

Bulls: Sired by A. I. leading sires like Final Answer, Final Product, Iron Mountain, Astro, Stout, Governor, Black Impact, Packer, and Box Beef

Selling: 10 Head of Elite Balancer and Gelbvieh Heifers - Top Cut out of our replacement pen!

Selling: 40 Head of fancy - commercial- replacement Heifers!

- * Many Calving Ease Bulls sell
 - * Winter Feeding Program
 - * Bulls Design to Add Value to your calf crop
 - * Bulls that sire - Top Selling Feeder and Fat Cattle
 - * Sale broadcasted on DV Auction
- * Check out our websites for pictures, video's, ultrasound data and more!

To request catalog email: jcgrund@wbsnet.org

Grund Beef Genetics
Sharon Springs, KS
785-821-1022 or 785-891-3765
<http://www.grundbeefgenetics.com>

Dan is back! Dan Geschwentner. Small remodeling and repair jobs. Call 785-443-3673.
C 2/3-TFN

Jacobs Service, your authorized Traeger Grill dealer. See our selection of grills, pellets, rubs and spices at West Highway 36, Norton. Pellets are \$13.50 per bag EVERY DAY!
N tfn

Septic Tanks Pumped and systems installed. Call Logan Septic and Water. 785-543-7772.
N tfn

A&S Plumbing 24/7, 20 years experience. No job too big or small, fully insured.

Ask about our 10% discount for parts and labor for first time customers. Spencer Stevens, owner. 785-664-8180.
N tfn

FOR RENT

Nice 1 bedroom furnished apartment in Goodland. Utilities and cable included. No smoking, deposit required. Call (785) 899-5041 or (785) 899-5866.
G 2/12-tfn

3 bedroom house in Goodland. \$425.00 per month. Lease and references required. Call 785-821-2305.
G 2/12-tfn

NORTHWEST TECH WWW.NWKTC.EDU

ENDOWMENT FUNDRAISER

MARCH 1ST

GOODLAND ELKS LODGE

\$25.00	EVENT TICKETS	\$25.00	• DOORS OPEN @ 4:30 • OPEN BAR 4:30-5:30 • DINNER @ 5:30 • LIVE AUCTION @ 6:30 • ANNIE-UP @ 9:00	\$1,000	VIP TABLES • SIX OF THE BEST SEATS • PERSONAL SERVER • FIRST COME, FIRST SERVED!
---------	---------------	---------	--	---------	---

TO PURCHASE TICKETS • 785.890.1529 • SHAUDEL.BAIN@NWKTC.EDU

YUKON XL SLT'S!

FINLEY MOTORS CURRENTLY HAS 3 CLEAN PRE-OWNED YUKON XL SLT'S!

	2013 GMC YUKON XL SLT 1/2 TON 4WD Maroon, Leather, 14,286 miles Stock # X7530
	2010 GMC YUKON XL SLT-1 1/2 TON 4WD Steel Blue, Leather, 69,355 miles Stock # G7510A
	2013 GMC YUKON XL SLT 1/2 TON 4WD Bronze, Leather, 17,646 miles Stock # X7529

Each GMC Yukon is equipped with a DVD player and sunroof!

FINLEY MOTORS, INC.

1520 Highway 27, Goodland, KS 67735 • Toll free: (800) 525-3701 • "Your volume & variety dealer!"
WWW.FINLEYMOTORSINC.COM

YOST

800-524-9678 785-332-2188 yostford.com
Sales Manager - Brent Rueb • Rell Zimelman - Sales Agent

Use your Smart Phone to scan our Bar Code for complete inventory

Like us on Facebook Yost Ford

It's Ford Truck Month!

All through February -
Get Ford Truck Month Deals on F150s and F250s

- Increased Rebates
- Extended Warranties

Come in - Make Your Best Deal!
We need your good used trade-in

The New yostford.com
at the New Yost Ford

Time to get your orders in for Memorial Day

McCook Monument Co.
803 West B Street
McCook, NE 69001
Contact Mindy - 308-345-6966
Bring this ad in for a discount.

41st Annual Production Sale

Tuesday, March 4, 2014 - 1:00 PM
EIGHT MILES NORTH AND ONE MILE WEST OF GUIDE ROCK, NEBRASKA

3 Yearling Bulls • 41 Two Year Old Bulls
4 Yearling Heifers • 32 Bred Two Year Old Heifers

LOT 40 • S&S AUSSIE 66Z

View Our Catalog Online at:
www.schutteandsons.net

DVAuction Broadcasting Real-Time Auctions
This sale will be broadcast live on the internet www.dvauction.com
Real time bidding & proxy bidding available

SCHUTTE & SONS
Ron and Nancy Schutte
1417 Road 2100, Guide Rock, NE 68942
Phone: (402) 756-3462 • Cell Phone: (402) 746-4378
Email: rnschutte@gtmc.net

NEW Dollar Menu & More!

\$1				\$2 & more	
\$1.69			\$1.39		

GOODLAND LOCATION ONLY • OPEN DAILY 6 A.M. TO 11 P.M.

Office/retail space in downtown Goodland. Ground floor and basement. Longtime business neighbors on both sides. Located in 100 block of W. 11th Street in Goodland (see sign on door). Ample parking. Low monthly rent. Locally owned. Close to police and fire departments. On weekdays call (785) 899-4631 or (785) 899-5687, or inquire at 126 W. 11th Street, Goodland.
G 2/12-2/19

Storage rentals 10x25. Colby. Discount for multiple months. Call 785-443-3261.
C 1/29-2/19

2 room efficiency apartment includes utilities. Colby. No pets. Call 785-443-3261.
C 1/29-2/19

Houses and apartments in Goodland. All sizes. Call for details. (785) 890-6538.
G 1/15-tfn

For rent: 2 bdr. apartment, close to downtown Oberlin, city bill paid, \$350 per month plus \$350 deposit. Contact Johnson Realty, Inc. (785) 475-2785.
O 11/13tf

2 bedroom apartment, Brookwood Apartments, Oberlin, (785) 475-3450.
O 36tf

ONE AND TWO BEDROOM APARTMENTS are available at The Bird City Housing Authority. Contact 785-734-2407 for more information. 05-08c
SFH 1/30-2/20

FIFTH STREET APARTMENTS in Bird City has for rent two-bedroom duplex apartments. Applications must income qualify. For information contact N.W. Kansas Housing, Inc. at (785) 421-2151 or pick up an application at Century II in Bird City. We offer Equal Housing Opportunity and are handicap accessible.
SFH tfn (52)

Downtown office space available at 5th and Franklin, Colby. Call 785-462-3939.
C 9/19-TFN

One bedroom apartments available to rent in Norton. Contact: Lacy Frack, PHM Executive Director, Norton Housing Authority KS034, Phone 785-877-2714; Fax 785-877-2577.
N tfn

Independent living apartments at Prairie Meadows and Bieber Cottages in Norton now available for persons 55 years and above. For more information about these comfortable living apartments, call Administrator Nancy McGinnis, phone 785-877-2601.
N tfn

Houses & Apartments. Cole Real Estate in Goodland 785-899-2683.
G tfn

REAL ESTATE

Historic home - Grinnell, 2014 sq. ft. double size corner lot, 4 BR, 2 bath, garage, workshop area, lawn shed, fenced. Cheryl 785-462-0027 email for pics csolberg@nkesc.org
C 2/19-3/5

FOR SALE OR TRADE, 3 bedroom home in Brewster, 106 Nebraska. \$39,000 OBO. Contact Kenny at (719) 740-1072.
SFH 2/6-2/20

REAL ESTATE SERVICES

It pays, not costs to use our services. For all your auction and real estate needs contact Duane McEwen at 785-877-3032. Homorange Real Estate, Broker Gary Richards.
N tfn

Make the Weiser Choice - Contact Weiser Realty for all of your real estate needs at 785-877-2185. Jolene L. Weiser, Broker; Samantha M. Hager, Sally Nelson, Robert Wyatt, salespersons.
N tfn

Professional Service Listing and Selling your property. Contact Larry Riggs, Broker or Jeanette Krizek, Listing Agent. 785-678-7163. Kansasland Realty and Auction.
N tfn

FARM SERVICES/ EQUIPMENT

Disc Rolling—Rolling on the farm. Call Ron Lewis, Eustis, NE. 308-486-3501.
N tfn

LIVESTOCK

Mader Hereford. Hereford bulls for sale. Call Wilma Mader (785) 675-8351, Keith Bowie, (785) 675-1198, Shane Bowie (785) 475-4404.
O 2/5-5/28

PASTURE WANTED

Need grass to rent for cow calf pairs. L.J. Heier Colby 785-443-2824.
C 1/22-3/2

GRASS PASTURE WANTED to rent, Adam Jones, 785-332-6206.
SFH tfn

GRAIN/FEED

80 Round Bales - 9% Protein, low nitrates, SE Thomas County. Call 303-202-1000.
C 2/19-2/26

HAY FOR SALE: Round bales. Cane hay \$49 bale: Corn hay \$38 bale: Corn stalk \$31 bale: Grass hay \$55 bale: Oat hay \$77 bale: Milo hay \$57 bale. Tested safe nitrates. Delivery available. call 785-332-5600 St. Francis. 06-07
SFH 2/6-2/13

FOR SALE

Refrigerators, electric stoves, air conditioner, under-counter dishwashers. We do

not buy appliances. 785-694-8013.
C 2/12-3/5

Steel Building Bargains - Allocated Discounts. We do deals. 30x40, 50x60, 100x100 and more. Total Construction and Blueprints Available. www.gosteelbuildings.com - Source #18X, 620-577-4455.
C 2/12-2/19

1948 Philco Radio/Phonograph cabinet, good condition. Both radio and phono work. \$100.00. Call (719) 350-0705.
G 1/1-tfn

For Sale: A slightly used wood pellet fireplace insert and 20 bags of Pellets. This Timber Ridge Pellet Fireplace Insert is an efficient heating upgrade with a beautiful bay design and EPA certification. U.S.A. 45-lb. hopper provides up to 24 hours of warmth. User-friendly control panel with auto start, works with masonry or zero-clearance fireplaces. Minimum opening required: 36in.W x 16in.D x 21in.H. Asking \$2000.00 O.B.O. Please call for more information at 785-475-3510.
O 11/6TF

Third row seats for GMC Yukon . Two pieces, gray leather, good condition. \$300 OBO. Call or text (785) 202-0607 or (785) 470-1188.
O 11/6TF

2 Harley Davidson die cast models. 1-1:10 scale Hot Wheels HD Softail. 1-1:10 scale Maisto FLSTS Heritage Springer. Still in original boxes! Call Gary at (719) 350-0705.
G 9/25-tfn

AWP tool belt/pouches with kidney belt and suspenders. Paid \$100 plus, asking \$50. Call Gary at (719) 350-0705.
G 9/25-tfn

FIREWOOD FOR SALE in Goodland. Call (785) 890-7224 or (785) 821-2814.
G 12/12-tfn

1,600 ACRES PRIME CROPLAND LOGAN COUNTY, KANSAS

Located between Monument and Winona, Kansas. 97% Keith Silt Loam soil.



\$2,600/Acre

For more information, contact

Rock L. Bedore
785-443-1653

Unreserved Farm Machinery Estate Auction
Thursday, February 27, 2014 – 10:00 AM CT
961 East County Road AA, Leoti, Kansas

Directions: From Scott City, KS: 12 miles West, 11 miles South, 3 1/2 miles West. From Leoti, KS: 7 1/2 miles East to Road 20, 11 miles South to Road AA, then 1 3/4 miles East.

TRACTOR: 02 John Deere 9320 4X4 Tractor, 3792 Hrs

COMBINE & HARVEST EQUIPMENT: J&M 875-16 Grain Cart; Gleaner R60 Combine, 1960 Sep/2717 Eng. Hrs; Duetz Allis 25' Platform Head w/Bat & Pickup Reel.

TRUCKS & TRAILERS:

80 Ford LN800 Truck, 36,327 Miles, 24' Midwest Steel Box; 74 Ford F750 Truck, 47,401 Miles, Steel Box; 71 Chevy C50 Truck w/Flatbed, 80,877 Miles, 15' Bed, 1600 Gal. Poly Tank; 90 Ford F250 XLT Pickup, 4X4, 87,572 Miles; 02 Ford F250 XLT Super Duty Pickup, 4X4, 125,200 Miles; 83 Ford F250 3/4 Ton Pickup, 4X4, 106,900 Miles; 00 Sooner 24' Gooseneck Aluminum Livestock Trailer; 85 Shop Built 20' Gooseneck Flatbed Trailer, Tandem Axle; 12 GR Trailer 20' Steel Plated Flatbed Trailer; 13 Load Trail Tandem Axle Utility Trailer.

SKID LOADER & ATTACHMENTS:

Cat 277b Track Skid Loader, 1815 Hrs

HAY EQUIPMENT:

John Deere 4895 Windrower w/895 18' Header, 1556 Engine Hrs., 1290 Cutter Hrs; John Deere 567 Round Baler, Megawide.

FARM MACHINERY:

Sunflower 3392 Flex King Blade Plow, 52' Quad Fold; Great Plains AD1345-45124123441, 45' Air Drill; Krause 1952 Disk, 9" Spacing; Speedmover, 10' w/Hydr. Cylinder; Krause 744A 32' Hydr. Fold Chisel; Quinstar Fallowmaster II, Sweep, Tri Fold.

LIVESTOCK EQUIPMENT:

Pride of the Prairie Gooseneck 12 Round Bale Trailer; (16) Silver 10' Portable Corral Panels; (31) Portable Panels on 2 Wheel Cart; B Bar D Portable Loading Chute on Cart.

ATV & SNOWMOBILE

Polaris Sportsman 500 HD 4 Wheel ATV w/Sprayer; Polaris Trail Touring DLX Snowmobile, 2849 Miles.

SHOP EQUIPMENT:

Bobcat 250 Welder/Generator, 11,000 Watt Generator, .08 Hrs; Assorted shop tools;

For more information and color photos visit www.stockra.com

Larry Brack Estate & Carlotta Brack, Owner • 620-375-4783



1-800-WE SELL 8 www.stockra.com

YOU ARE INVITED

FRONTIER AG AVIATION

2014 CUSTOMER APPRECIATION & GOODLAND OPEN HOUSE



The Frontier Ag Aviation Team is hosting a come and go open house on Saturday, February 22, 2014, at the NEW Frontier Ag hangar in Goodland. The hangar is located at 610 Renner Field Road at the Goodland Airport. The open house will start around 10:00 AM MT and conclude around 3:00 PM MT.

Tour our new facility, ask us about our aerial application business and check out the Frontier Ag spray planes. Look at the warplanes that will be on exhibit for you that day, get to know the entire Frontier Ag Aviation Team and enjoy a meal served by Steve Evert of Goodland.
GOODLAND:890-3606 OAKLEY:672-4662 BREWSTER:694-2664

WOOFER PUMP & WELL INC.
1024 Oak Ave.
Hoxie, KS 67740

Office Phone 785/ 675-3991 Fax: 785/ 675-3990
Shop Phone 785/ 675-3023 E-mail: woofpw@ruraltel.net

Irrigation, Domestic, Geothermal & Environmental Services

- Irrigation Pump Repair
- Irrigation Well Drilling
- Domestic Well Drilling & Repair
- Environmental Drilling
- Windmill Repair
- Solar Systems
- Geothermal Pump Systems

For all your irrigation needs call:
Lance Shepard (785) 675-8376



480 ACRES CROPLAND LAND AUCTION
"MULTI-PARCEL" ABSOLUTE
LOGAN COUNTY, KANSAS

THUR., MAR. 6, 2014 @10:30 AM, CST

AUCTION LOCATION:
Buffalo Bill Cultural Center
Oakley, Kansas

Sellers: Beneficiaries of Hugh Faulkner Estate

LAND WILL SELL IN 2 TRACTS AND COMBINATIONS

LEGAL DESCRIPTION:

TRACT 1: N/2 of 6-13-34
TRACT 2: SE/4 of 6-13-34

- Land is all tillable, on good roads and close to the markets.
- 264 acres open for immediate possession to Buyer(s)
- Growing wheat on Tract 1 is subject to current Cash Lease.
- Surface rights only will transfer to the buyer

INTERNET BIDDING AVAILABLE!

For a Virtual Tour visit www.farmandranchrealty.com

FARM & RANCH REALTY, INC.

NEAL MANN, Listing Agent (785-635-2102)
1420 W. 4TH • COLBY, KS 67701

Call Toll Free - 1-800-247-7863

DONALD L. HAZLETT, Broker/Auctioneer

"When you list with Farm & Ranch, it's as good as SOLD!"



Specials for the week February 21-27

Drinks included. Dine-in or carry out!

- Friday, Feb. 21: Tacos
- Saturday, Feb. 22: Chili with grilled cheese
- Sunday, Feb. 23: Salisbury Steak
- Monday, Feb. 24: Hot Ham and Cheese Sandwich
- Tuesday, Feb. 25: Chicken Wrap
- Wednesday, Feb. 26: Meatloaf
- Thursday, Feb. 27: Alfredo



Jct. of Hwys. 27 and 40, Sharon Springs, Kansas • Phone: 785-852-4664

JMB Angus Rains Simmental N Bar Cattle Co. Bull Sale - Thursday, March 6, 2014 • 12:30 PM MST

At the JMB Angus Ranch - 9 miles southeast of Sharon Springs, KS



Sitz Top Game
• 50 Angus Bulls

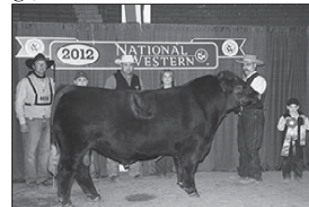
Angus Sires:
Top Game, Frontman, Final Answer, Upward, Wisdom, VDAR Really Windy, AAR Tinfold, SydGen CC & 7

JMB Angus
Joel & Mary Banker
Sharon Springs, KS
785-852-4229 • jmbangus.com



Longevity
• 25 Simmental/SimAngus Bulls
• 15 Simmental/SimAngus Heifers

Rains Simmental
Mike & Celeste Rains
Oakley, KS
785-672-0010



Lightning McQueen
• 25 Red Angus Bulls

Red Angus Sires: Lightning McQueen, N Bar Ike, Norsman King
N Bar Cattle Co.
Noland & Zane Ward
Russell Springs, KS
785-751-4438

KETTERL'S 5K ANGUS

Calving Ease Growth

SELLING REGISTERED YEARLING ANGUS BULLS



Final Product

Vernon Ketterl
(785) 475-3636

SIRES INCLUDE

- Upside
- Consensus 7229
- Basin Excitement
- Renegade
- Final Product
- Really Windy



Really Windy

Todd Ketterl
(785) 470-7208

All with top carcass performance

**2013 FORD
EDGE LIMITED AWD**

Heated Leather Seats, Touch Screen Radio, Reverse Camera, Sat. Radio Keyless Entry Loaded

ONLY!! \$26,995



**2013 FORD F-150
SUPERCREW**

Short Box V-8 4X4 XLT Pkg., Trailer Tow Pkg., Pwr., Seat, Keyless Entry, Sync. Clean Low Mileage Truck

ONLY!! \$29,995



**2014 FORD F-250
REG-CAB**

Long Box Powerstroke Diesel 4X4 Automatic, Trailer Tow Pkg., Reverse Camera Sat. Radio, Sync., Keyless Entry, 9,000 Miles

ONLY!! \$41,595



**2011 DODGE RAM
2500 MEGA-CAB**

Short Box, Laramie Pkg., Cummins Turbo Diesel 4X4 Automatic, Heated And Cooled Leather Seats, Navigation, Reverse Camera, Sat. Radio, Remote Start, Trailer Tow Pkg., Clean Local 1-Owner

ONLY!! \$36,995



**2012 DODGE RAM
2500 MEGA-CAB**

SLT Pkg., Hemi 4x4, Built In Tool Boxes, Trailer Tow Pkg., Pwr., Seat, Keyless Entry Sat. Radio Local 1-Owner

ONLY!! \$29,995



**2008 DODGE RAM
1500 QUAD-CAB**

Short Box, SLT Bighorn Pkg., Hemi 4X4, Keyless Entry, Trailer Tow Pkg., Sat. Radio, Factory 20" Wheels, Clean

ONLY!! \$16,495



**2008 DODGE RAM
1500 QUAD-CAB**

Short Box, SLT Pkg., V-8 4X4, Trailer Tow Pkg., Keyless Entry, Sat. Radio, 20" Wheels, Clean Local Trade

ONLY!! \$13,995



**2002 FORD F-350
CREW CAB**

Dually, XLT Pkg., 7.3L Powerstroke Diesel 4X4 Automatic, Trailer Tow Pkg., Keyless Entry, Pwr. Seat, Alloy Wheels, Local Trade

ONLY!! \$12,995



**2006 DODGE RAM
3500 MEGA-CAB**

Short Box, Laramie Pkg., Cummins Turbo Diesel 4X4 Automatic, Heated Leather Seats, Touch Screen, Radio, Navigation, Keyless Entry, Loaded, Clean Local Trade

ONLY!! \$24,995



**2001 DODGE RAM
1500 QUAD-CAB**

Short Box, SLT Pkg., V-8 4X4 Automatic, Pwr., Windows And Locks, CD, Trailer Tow Pkg., Alloy Wheels, Very Clean, Local Trade

ONLY!! \$5,995



**2002 DODGE RAM
1500 QUAD-CAB**

Short Box, SLT Pkg., V-8 4X4 Automatic, Keyless Entry, Trailer Tow Pkg., 20" Wheels, Run's And Drives Great, Local Trade High Mileage

ONLY!! \$3,695



**1998 GMC
1500 EXT-CAB**

Short Box V-8, Automatic, 4X2, Keyless Entry, Trailer Tow Pkg., Alloy Wheels, Tonneau Cover, Clean Local Trade

ONLY!! \$3,595



**2005 CHEVROLET
1500 EXT-CAB**

4-Door Long Box, V-8 4X4 Automatic, Trailer Tow Pkg., New Tires Spray In Bedliner, Clean Truck

ONLY!! \$7,995



**1998 CHEVROLET
S-10 BLAZER LT**

Pkg., 4.3L V-6 4X4, Keyless Entry, Leather Seats, CD Alloy Wheels, Very Clean, Local 1-Owner Run's Great

ONLY!! \$3,995



**2003 CADILLAC
ESCALADE EXT AWD**

Heated And Cooled Seats, Pwr., Sunroof, DVD, Navigation, Touch Screen Radio, 20" Wheels, Keyless Entry, Loaded

ONLY!! \$6,995



**2008 FORD
EXPEDITION**

XLT 4x4, Heated Leather Seats, 3rd Row Seating, Clean Local Trade

Only!! \$13,995



**2006 CHEVROLET
SUBURBAN Z-71 OFF ROAD**

Pkg., Heated Leather Seats, 3rd Row Seating, Rear Heat And A/C, DVD, Sunroof, Keyless Entry, Trailer Tow Pkg., Clean Local Trade

ONLY!! \$8,995



**2006 CHRYSLER
PACIFICA TOURING**

Alloy Wheels With New Tires, Sat. Radio, Keyless Entry, Pwr., Seat, Clean Local Trade

ONLY!! \$6,995



**2004 DODGE
DURANGO SLT PKG HEMI 4X4**

Leather Seats, 3rd Row Seating With Rear Heat And A/C, Sat. Radio, Alloy Wheels With New Tires, Keyless Entry, Clean Local Trade

ONLY!! \$7,595



**2003 DODGE
DURANGO SLT**

Pkg., V-8 4X4, Trailer Tow Pkg., 3rd Row Seating, Keyless Entry, Alloy Wheels, Very Clean Local Trade

ONLY!! \$5,595



**2001 FORD
F-250 REG-CAB**

Long Box V-8 4X4 Automatic, Trailer Tow Pkg., Great Work Truck, Run's Great

ONLY!! \$3,295



**2000 JEEP
CHEROKEE SPORT**

6 Cyl., 4X4 Automatic Pwr., Windows And Locks, CD, Clean Local Trade

ONLY!! \$4,195



**2000 VOLKSWAGON
BEETLE**

4 Cyl., 5-Speed, Keyless Entry, Leather Seats, Sunroof, Alloy Wheels, CD Clean Local Trade

ONLY!! \$3,995



**2004 AUDI A4 1.8T
QUATTRO AWD**

Automatic, Heated Leather Seats, Automatic, Pwr., Sunroof, Bose Stereo, Pwr., Seat Loaded, Low Miles 1-Owner Lady Driven Mint Condition

ONLY!! \$7,995



**2003 CHEVROLET
1500 REG-CAB**

Short Box 5.3L V-8 4X4 Automatic, Trailer Tow Pkg., Alloy Wheels, Tonneau Cover, Run's And Drives Great Local Trade

ONLY!! \$4,995



**1992 CHEVROLET
1500 EXT-CAB**

Short Box 5.7L V-8 4X4 5-Speed, Pwr., Windows And Locks, Trailer Tow Pkg., New Tires, Run's And Drives Great

ONLY!! \$1,800



**1999 FORD
F-150 EXT-CAB**

Short Box Lariat Pkg., 5.4L V-8 4x4 Automatic, Trailer Tow Pkg., Alloy Wheels, Matching Fiberglass Topper, Run's Great Local Trade

ONLY!! \$2,595



**1998 FORD
F-150 EXT-CAB**

Long Box XLT Pkg., V-8 Automatic 4x2, Keyless Entry, Trailer Tow Pkg., Alloy Wheels, Very Clean Local Trade

ONLY!! \$4,895



**2003 DODGE
GRAND CARAVAN SXT**

V-6, 3RD Row Seating with Rear Heat and A/C, Keyless Entry, Pwr., Seat, Clean Local Trade

ONLY!! \$2,595



**2002 FORD
TAURUS SE V-6**

Keyless Entry, Alloy Wheels, Pwr., Seat, CD, Run's and Drives Great, Local Trade

ONLY!! \$1,995



**401 East B Street Mccook, NE
308-345-5200 • 800-345-0031**

