

CARD OF THANKS

The family of Jeanette Bracelin would like to say thank you to the wonderful people of our community for your loving thoughts and prayers at the time of our loved ones passing. Whether you sent a card, provided food, had time for a kind word, sent a memorial, or sent flowers, your expression of sympathy is humbly appreciated. Thank you to the ladies of the church for the wonderful meal. We are so blessed to live in a loving and caring community. May God bless each of you. -Keith, Beverly and family, Deb and family.

christian woman, asian would be pleasing. I am 5'11", 160 lbs., 63 years. Mature, since retired handyman w/good reputation. Enjoy good sense of humor, camping and fishing, cooking, strolls in the moonlight, a warm fire with a good old movie. College educated, farm boy in good health. Smoke coming out of the chimney but a good fire in the stove. If curious write to: Willing to take a chance, 700 W. 5th, Apt. 17, Oakley, KS, 67748.

NOTICES

Quint Pumpkins will be open Saturday and Sunday, from noon to 4 p.m. Located 3 miles north of Colby on hwy 25 and 1/2 mile west. (Moonlight Gardens)

Ken's Barber Shop in Colby. 155 E. 4th St. will be closed October 24 - 26.

Holiday Craft Fair. Bird City, KS at the Cheylin grade school gym. Saturday, October 27 from 10 a.m. - 3 p.m. Kids Korner lunch available.

8th Annual Craft "Fall Festival" in Grinnell. Catholic Church Center, 302 S. Monroe St. Sunday, October 28th from 11 a.m. - 5 p.m. Entertainment - "9-ine Foot Squirrel Band" Concessions Held by 4-H Club. Currently has 35 vendors!!

THE AMERICAN LEGION AUXILIARY in Bird City will be conducting Bingo games the first and third Saturdays of the month. Due to the extensive remodeling at the Legion hall we will need to meet at the Bird City Senior Center until further notice.

CHECK OUT polish colors and Hempz lotions at Ooh La La. Open 11-6 Wednesday, Thursday, Friday. St. Francis.

OOHLALA and Sainty Wireless. 301 W. Jackson. Open Wednesday, Thursday and Friday 11-6. Come see the Galaxy Tabs. St. Francis.

THE SENIOR CITIZENS are holding a drawing for a rose quilt on Oct. 14. Tickets, \$1 each or 6 for \$5, are available at the center. St. Francis.

Carpet Cleaning: 3 Room Special - \$159.95! Dry-Foam Safe and Green Seal approved. Serving NWKS mileage free since 1987. A+ Cleaners (785) 538-2526 or (785) 443-5400, Johnene Cheney.

Fall Clean-Up Time! Will haul away unwanted items and help with your clean-up needs 785-672-4163 please leave message.

Check our prices at Colby Ag Center LLC. for Large Savings. Heavy duty commercial batteries, filters, oil, air hydraulic for most all makes of equipment, fully guaranteed.

Help for Abused women and children. Open 24 hours a day, seven days a week. Call Northwest Kansas Shelter, 800-794-4624.

Looking for fall crops to harvest. Corn \$30 per acre. Picked and hauled. Will also cut milo and soybeans. Call Derek Sumner at 785-871-0962.

HELP WANTED

CMA and CNA positions available for all shifts for our Assisted Living Facility. We offer competitive wages, shift differentials for night shift, holiday pay, and other benefits available. Ask for Gary at Fairview Estates Retirement Community, 1630 Sewell Ave., Colby, KS 67701 785-462-2154.

P/T Assistant Travel Agent M-W-F, 10 a.m. - 3 p.m. Proficient MS Word cut & paste, internet/hotmail navigation. Start \$8.50/hr. 785-462-6999.

Heifer development growing yard needs feeder and maintenance person capable of running feed equipment, mill operations, welding, and day to day duties. \$12/hr benefits after 6 months, must be dependable. 785-462-2032.

Heartland Rural Counseling Services is seeking a part time billing professional for 8 - 10 hours per week. Need to be reliable, professional and self motivated. Must be

computer literate. Call 785-460-7588.

Truck Town Chrome Shop. Stocking shelves, answering phones, running errands. Flexible hours. Light clerical duties. Full or part time available. Apply in person. 785-460-8785.

Colby 24/7 Travel Store has an opening for full or part time cashier. Benefits include, flexible hours, BCBS insurance, 401K, paid vacation, and incentive pay. Apply in person at 24/7 Travel Store, 1980 South Range. Check us out on the web www.24-7stores.com.

Chartwells Dining Services has an immediate opening for full-time morning salad prep and lunch time cashier. Hours are 7 a.m. - 3 p.m. Monday through Thursday and 8 a.m. - 1 p.m. on Fridays. Salary is negotiable. If you are interested in the position, please stop by the Student Union in Colby for an application. No phone calls. Background check and pre-employment drug screening required. EOE/MFVD/AA.

Immediate opening for Tire and Service Assistant at C.A.R. Specialist. No experience needed. Contact Adam Ketterl at (785) 626-9388, Atwood.

Excavation manager: Manager need for excavation Division in Garden City and surrounding area, Must have knowledge of public utility installation, directional boring and managing personnel and is a self starter. Permanent position Benefits include health insurance, vacation and retirement. Pay base on experience. Send resume to P.O. Box 1215, Garden City, KS 67846. E.O.E.

Now Hiring! CNA's and Housekeepers. FT/PT available. Competitive wagescale. Apply in person at Deseret Health & Rehab at Colby, 105 E. College Dr., Colby, KS or call 785-462-6721 EOE.

HELP WANTED

The Thomas County Sheriff's Office is currently seeking applications for a Detention Deputy. Applicants must be at least 18 years of age and meet required standards in the following categories: background investigation; written oral and psychological testing, keyboard skills; health screening.

The Sheriff's Office is an equal opportunity employer and provides employees single health Insurance, sick leave, vacation, KPERs, retirement benefits, overtime provisions, and uniforms (cleaning supplied). Salary depends upon qualification and experience.

Persons wishing to apply may pick up an application at the Thomas County Sheriff's Office, 225 N. Court, Colby, Kansas 67701. (Phone: 785-460-4570). Position to remain open until filled Interviews will begin immediately.

If you have previously applied with the Sheriff's Office within the past year, please come in and fill out another application.

EXPERIENCED AGGRESSIVE salesman to sell vehicles at Yost Ford, St. Francis, Ks. Contact Dave Yost at 785-332-3351. Yost Ford - an equal opportunity employer.

OUTSIDE ELEVATOR HELP. Full-time with benefits. EOE. Apply in person at Wheeler Equity. 785-332-2281.

CDL DRIVER needed. 2,100 - 2,500 miles/week. Home nights and weekends. Good driving record a must. Call 785-821-0492.

I WOULD LIKE to hire someone to clean my sidewalks of snow this winter. Please call Marvel at 785-332-3277. St. Francis SF 41

Diesel Heavy Equipment Mechanic City and County of Denver, view posting and apply at www.denvergov.org/jobs. C 10/10-10/17

Positions Open: Part-time cook, Part-time CNA, PRN evening charge nurse, full-time Activities Director. Apply

at Good Samaritan Society, Decatur County- 108 E. Ash, Oberlin, KS or www.good-sam.com. EOE O 10/10-10/17

CDL Driver needed. 2,100-2,500 miles/week. Home nights and weekends. Good driving record a must. Call (785) 821-0492. G 10/3-10/17

We are currently hiring a seasonal receptionist in our busy tax office. December 1st to April 15th, on an annual basis. People, organizational, and computer skills critical. Apply in person with resume to Warren C. Bainter CPA, 122 E. Commercial Street, Oberlin, KS 67749. O 10/3-10/17

Great Western Tire of Colby, Inc., 1170 S. Country Club Drive, has an opening for a full time tire technician. Experience required, but will train the right person. Full time position includes competitive salary and benefits. Apply in person, EOE. Questions please call 785-462-2100. C 9/26-TFN

GARAGE SALES

1140 Golden Ave (Golden Plains Garden Center Building) Colby, KS - Huge Multi Family Estate Garage Sale! Lots of Everything! Christmas, medical scrubs, Geraldine's Sugar Cookies, Parker's Spicy Mustard, household items and decorations, shop equipment, work benches, antique school desk, vintage toys, clothes, purses, Tupperware!!! Friday, October 19 from Noon to ????, Saturday, October 20 from 9 a.m. To ??? and Sunday, October 21 from Noon to ????. You Will Not Want To Miss This One!

Garage Sale - Saturday, October 20, 8 a.m. to 2 p.m., 17840 KQNK Rd., Norton. Clothing-all sizes, puzzles, Christmas items, something for everyone.

AUCTIONS/AUCTION SERVICE

Kansasland Realtors Auction Service, Land and Farm Equipment. Call Larry Riggs at 785-874-4776 or 785-543-4440.

CHILD CARE

Licensed Day Care in Colby has openings for 6 weeks to 4 year olds. 785-269-7509.

PERSONALS

Would like to meet a mature



We provide PRN, Travel & PERM staff to over 150 facilities in KS & MO!
RN- up to \$40 hr
LPN- up to \$27 hr
CMA/CNA- up to \$19 hr
RN- Hospital Travel: Clear up to \$475 per 12 hr shift
Apply: Cascadestaff.com or email hr@cascadestaff.com or call 888-229-5801



PART-TIME PARALEGAL WANTED
Kit Carson Correctional Center
Burlington, Colorado

The P/T Paralegal researches law, investigates facts and prepares documents. Assists inmates in accessing the court system and providing assistance in the preparation of pleadings or petitions for filing. Maintains legal forms and library and provides notary services. This is a part-time position that regularly works less than 30 hours per week.
• The successful applicant will have a high school diploma, GED certification or equivalent. Applicant must be a graduate from a paralegal or legal assistance program or have at least two years supervised experience as a paralegal or legal assistant. A valid driver's license is also required. Must demonstrate proficiency in Microsoft Word applications.
• To apply, go to www.CCAjob.com/Kit-Carson
• CCA is a Drug Free Workplace & an Equal Opportunity Employer M/F/V/D.

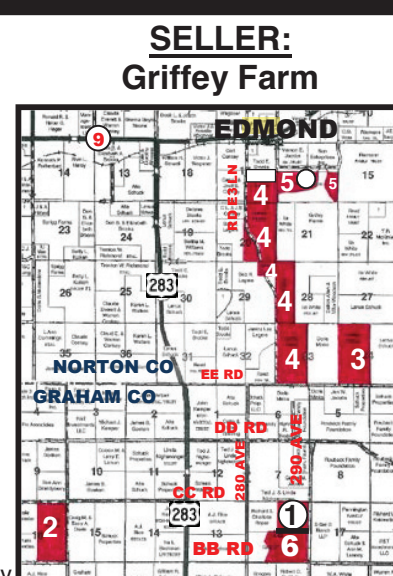
Help Wanted

We are a Quality Driven Company looking for Quality Driven Employees in Western Kansas.
Construction experience or Mechanical Aptitude preferred for Mill-Wright, Welding and Steel Fabrication duties.
Will train the RIGHT person.
Prefer applicants with a clean driving record and current license. CDL is a PLUS.
Top pay and benefit package DOE.
Call Doug at Mill-Tech Services (620) 214-4745 for application.

2,125+/- ACRES GRAHAM & NORTON CO, KS
IRRIGATED & DRYLAND CROPLAND & GRASS
"Multi-Parcel" ABSOLUTE LAND AUCTION
THUR., NOV. 1, 2012 @10:30 AM, CDT

AUCTION LOCATION:
ST. FRANCIS PARISH HALL, NORTON, KS

Land will be offered in 6 tracts & combos
GRAHAM COUNTY
TRACT 1: NE/4 of 18-6-22
TRACT 2: E/2 of 16-6-23, less 2 tracts
NORTON COUNTY
TRACT 3: W/2 of 34-5-22
TRACT 4: W/2 of 33-5-22, W/2W/2 of 28-5-22, NE/4NE/4 of 29-5-22, E/2 of 20-5-22 and S/2SE/4 of 17-5-22
TRACT 5: Cropland acres in S/2 of 16-5-22
GRAHAM COUNTY
TRACT 6: Approx 210 acres of cropland in S/2 of 18-6-22



SELLER:
Griffey Farm

INTERNET BIDDING AVAILABLE!

For virtual tour & brochure visit
www.farmandranchrealty.com

FARM & RANCH REALTY, INC.
SCOTTY LEGERE, Listing Agent (785-650-9970)
1420 W. 4TH • COLBY, KS 67701
Toll Free - 1-800-247-7863
DONALD L. HAZLETT
Broker/Auctioneer
"When you list with Farm & Ranch, it's as good as SOLD!"

BUILT FORD TOUGH EVENT

2013 F-150 LARIAT

0.0% APR FOR 60 MONTHS
\$1,000 CASH BACK*

- " Best-in-Class Payload
- " Best-in-Class Towing
- " Class-Exclusive Tailgate Step
- " Class-Exclusive 4.2" LCD
- " Productivity Screen (XLT with the available XLT Convenience Package)
- " EcoBoost® Engine

Yost Ford 785-332-2188
www.yostford.com 800-524-9678

BUILT Ford TOUGH

This could be the Opportunity

You've been waiting for...

The Goodland Star-News is looking for a **FULL-TIME ADVERTISING EXECUTIVE**
This person will represent The Goodland Star-News and The Country Advocate as part of a two-person advertising department. Pay based on generous commission (guaranteed base for first two months.)

Send a letter and resume to Kevin Bottrell, Editor, at 1205 Main Ave., Goodland, KS 67735 or e-mail: kbottrell@nwkansas.com. You may also apply in person. **No calls please.**

The **Goodland Star-News**
1205 Main Avenue, Goodland, KS
Phone: (785) 899-2338

Based on torque and EPA-estimated 16 city/22 hwy mpg, 3.5L V6 4x2. Class is Full-Size Pickups under 8,500 lbs. GVWR, Non-Hybrid.