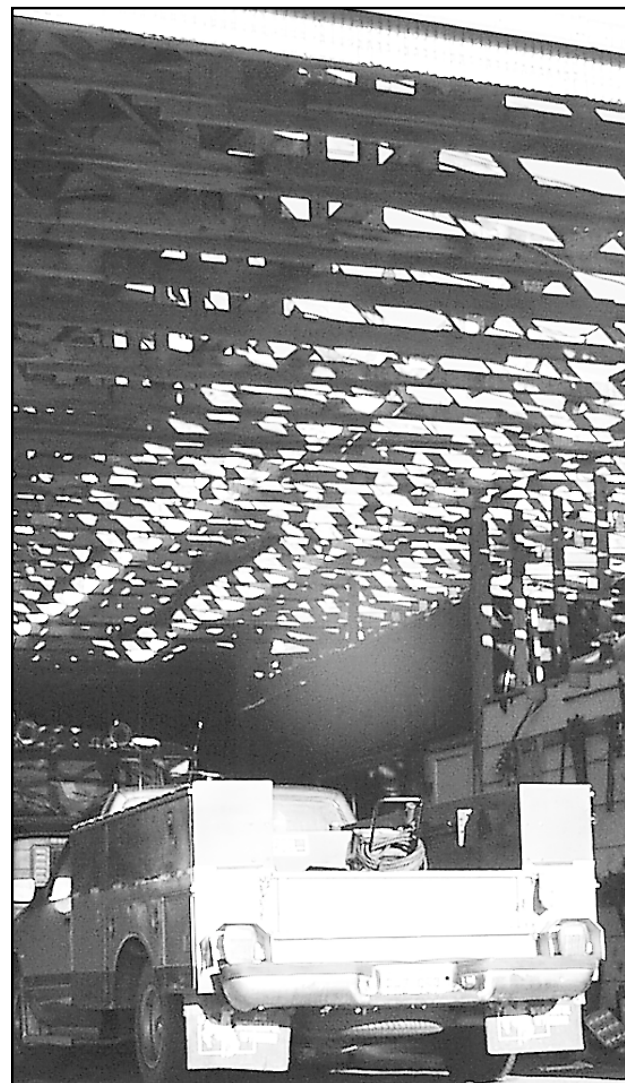


The Saint Francis Herald



The storm took the roof off of the Country Pantry, owned by Marvin and Esther Confer. Early Monday morning, a crew was cleaning up, taking off the rest of the roof and replacing it. It had been a while since it had rained and may be awhile before it rains again but they were not going to take any chances.

Storm does damage in St. Francis area



Herald staff photos by Karen Krien



The storm which hit the St. Francis area Sunday evening had 91 mile-per-hour winds and did a great deal of damage throughout the town. Top right, Calvin Raile's machine shed, located east of St. Francis, had the roof taken off the north side. Clockwise: Jeff Raile, manager of Yost Ford-Mercury, opened the door of one of the new vehicles which had the windows blown out by the force of the wind. Notice the glass on the floor and seats of the vehicle; Billy Krien picked up bridles after the storm tipped over a shed which housed horse equipment; this tree belonging to Bobby and Tina McDanel, was ripped out by its roots and laid over on the street. The city crew was busy Monday and Tuesday cleaning the streets of limbs and trees.