

# Counties to have emergency grazing

Bill R. Fuller, State Executive Director, Farm Service Agency (FSA), announced recently that emergency grazing of certain Conservation Reserve Program acreage has been approved in 35 Kansas counties. Director Fuller said this action was very good news to livestock producers because severe drought conditions have depleted hay

supplies, slowed the growth of pasture, and reduced the yield of hay in calendar year 2002. The approval was limited to grazing. Haying of Conservation Reserve Program land is not authorized at this time.

Kansas Farm Service Agency had submitted requests for emergency haying and grazing for 40 counties.

Barber, Cheyenne, Clark, Decatur, Edwards, Finney, Ford, Gove, Graham, Pawnee, Phillips, Rawlins, Rooks, Russell, Scott, Seward, Sheridan, Sherman, Smith, Stanton, Stevens, Thomas, Wallace and Wichita counties were approved. Director Fuller pledged to continue seeking relief for counties that were not approved: Comanche, Kiowa, Stafford, Ellsworth and Lincoln.

To be approved for emergency grazing due to drought conditions, Farm Service Agency County Committees must submit evidence that the county is suffering from a 40 percent or greater loss of normal hay and pasture production, and precipitation levels indicate an average of 40 percent or greater loss of normal precipitation for the four most recent months, plus the days in the current month before the date of request for emergency grazing.

Authorization for emergency grazing has been granted through August 31, provided the Farm Service Agency State Committee and the County Committee determines emergency grazing is still warranted in the county based on a monthly review of weather, pasture, and feed crop conditions. Participants will be notified if the State and Farm Service Agency County Committees determine that the emergency grazing authorization has ended.

Conservation Reserve Program participants in approved counties shall contact the Farm Service Agency local county office to determine if their reserve acreage is eligible for emergency grazing. Conservation Reserve Program participants must:

- request approval to graze eligible acreage after the county has received authorization for emergency grazing.
- obtain a modified conservation plan to include grazing requirements.
- leave at least 25 percent of each field or contiguous fields ungrazed for wildlife, or graze no more than 75 percent of the stocking rate as determined by Natural Resources Conservation Service.
- accept a 25 percent reduction in the annual rental payment made after October 1 for the acres actually grazed in 2002.

## Aid Association gives scholarship to student

Cort Antholz of McDonald has been awarded a Vocational/Technical School Scholarship from Aid Association for Lutherans/Lutheran Brotherhood (AAL/LB). The scholarship is for \$1,000 (\$500 for each of two years).

Antholz, a graduate of Cheylin High School is one of 100 graduating high school seniors to receive an Aid Association for Lutherans/Lutheran Brotherhood Vocational/Technical School Scholarship.

The 2002 Aid Association for Lutherans/Lutheran Brotherhood Vocational/Technical School Scholarship recipients were chosen from more than 400 applicants by American College Test (ACT) Recognition Program Services, a leader in scholarship support services. Selection was based on academic record,

leadership qualities, church and community involvement, and extracurricular activities.

Aid Association for Lutherans and Lutheran Brotherhood merged on Jan. 1, 2002, to create Aid Association for Lutherans/Lutheran Brotherhood, the largest fraternal benefit society in the United States. Composed of nearly 3 million members, the organization offers a broad array of financial products and services, as well as charitable programs, to Lutherans, their families and their communities.



Antholz

## Wildlife Habitat deadline is June 14

Wildlife Habitat Incentives Program applications now being accepted

The Natural Resources Conservation Service is taking applications through June 14 for the federal Wildlife Habitat Incentives Program (WHIP). Landowners may apply at the United States Department of Agriculture Service Center on West Highway 36 in St. Francis.

Landowners wishing to create or improve habitat for wildlife may receive technical assistance and be paid up to 75 percent of the cost of installing the wildlife habitat practice. Eligible practices include, but are not limited to, shrub or tree plantings and

native grass or forb plantings. A wildlife habitat development plan will be developed with the landowner to help address the landowner's concerns and to meet the needs of the target species.

Contracts are for 5 to 10 years and are ideal for projects where the landowner wishes to spread the cost of installation over a period of years.

For more information, contact the conservation office or call (785) 332-2341 extension 3.

## Student receives honors

The Northwest Kansas Technical College in Goodland presented the Class of 2002, Wednesday, May 22.

Luke Linin received two Earned Associates in Applied Science Degrees, one from Northwest Kansas Technical College and the second from Colby Community College. The degrees were in auto body repair. There were 251 students graduating in the Class of 2002.

Luke is the son of Rex Linin, Bird City.



CHARLES MCCART along with his companions Ranger and Misty were in town for a short visit while on their journey.

Herald staff photo by Karen Krien

## Kansan walks his way to Oregon

By Karen Krien

A man, accompanied by two large dogs and pulling a cart loaded with 320 pounds of camping equipment and supplies was seen across the county on Tuesday, Wednesday and Thursday as Charles McCart made his way across Kansas.

Mr. McCart is walking his way to Portland, Ore., almost 1,000 miles away from St. Francis. He started from his home town of Halstead, Kan., on April 15 and plans to walk around 15 miles a day, weather permitting. On Tuesday, when the wind blew and gusts were measured at 60 miles an hour, he spent the night in a motel trying to get the dirt removed and enjoying a comfortable nights rest.

The 45-year-old man said he had always enjoyed walking and decided that this was the year that he was going to set off on this great adventure. So far, he said he had enjoyed the countryside and the people he has met. He also said that there were lots of nice farmers who had let him camp in their yards and sleep in their barns.

He has brought his two German shepherds, Ranger and Misty, to keep him company. While still young dogs, Mr. McCart said they are well behaved but, once in a while, get a little vocal.

Mr. McCart is employed by Tortilla King in Moundridge and his boss let him off to make this journey of a lifetime. He takes time to talk to the

people and stops in newspaper offices to tell his story, asking only that they send a copy to his brother after it is published.

After leaving St. Francis, he walked to Idalia. He will walk up Highway 71 to Nebraska and then head west to Oregon. Since he is walking in the hotter part of the year, he took the north route and is excited about seeing the mountains, trees and beautiful scenery along the way.

Mr. McCart expects his trip to be around 2,000 miles and plans to be in Portland by Sept. 15. If he doesn't make by that date, he plans to purchase a pickup and drive the rest of the way and he definitely plans to drive, not walk, back to Kansas.

## REBATES AS HIGH AS \$3500 OR GMAC FINANCING AS LOW AS 1.9% GREAT SELECTION OF OVER 100 NEW CHEVY TRUCKS & CARS, BUICKS, OLDS & PONTIACS



GREAT SELECTION OF CHEVY CREW CAB 4X4'S



2002 CHEVY S-10 CREW CAB 4X4  
\$3,000 REBATE



GREAT SELECTION OF CHEVY CREW CAB 4X4'S



2001 CHEVY CAVALIER, 19K, BRIGHT RED  
\$9,900



'99 OLDS AURORA, LOADED & SUPER SHARP, DIAMOND WHITE  
\$15,500



'99 CHEVY MONTE CARLO LS, 3100 V-6  
\$10,550



'97 OLDS ACHIEVA SL, 69K, BRIGHT RED  
\$6,350



'96 LINCOLN CONTINENTAL, SHARP CAR  
\$8,500



'96 OLDS CUTLASS CIERA SL, 3.1 V-6  
\$2,900



'94 MERCURY GRAND MARQUIS LS, NICE CAR  
\$4,500



'89 CHEVY SUBURBAN 4X4, FI 350 V-8, 89,700 MILES  
\$4,500



'84 JEEP WAGONEER 4X4  
\$1,250



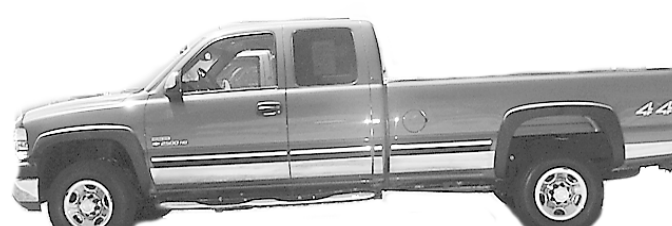
'98 CHEVY 3/4 TON 4X4, 6.5 TURBO DIESEL, NICE  
\$16,500



'94 CHEVY 3/4 TON 4X4, 6.5 TURBO DIESEL, HEALTHY 4X4  
\$8,500



'89 FORD F250 SUPERCAB 4X4  
\$1,995



2001 CHEVY HD2500 4X4, DURAMAX & ALICE  
\$32,500



2000 CHEVY S-10 2WD, LOADED 3<sup>RD</sup> DOOR  
\$13,500



**HARCHELROAD MOTORS INC.**  
WAUNETTA, NEB. (308) 394-5555

## Business Directory

To list your business, call 785-332-3162.

## Hot Brush

SIGNS-LETTERING & PINSTRIPES  
Custom Vinyl & Painting

Box 309  
BIRD CITY, KS 67731  
FAX: 785-734-2459

800-886-2423

Dr. D.F. Schnee

Optometrist

601 E. Hwy 24

St. Francis, KS 67756

785-899-5501

or toll free 1-800-864-4612

Open Mondays\*Hours by appointment

## Jennifer Boyles

The St. Francis Herald

Box 1050,

St. Francis, KS 67756

(785) 332-3162

FAX (785) 332-3001

EMAIL:

jboyles@nwkanas.com

## Unger Chiropractic Clinic

Ryan R. Unger, D.C.

Practice of Chiropractic,

Nutrition & CPK

Hours: Mon.: 8:30 a.m.-5:00 p.m.

Wed.: 8:30 a.m.-1:00 p.m.

Fri.: 8:30 a.m.-3 p.m.

P.O. Box 1133, 120 N. Scott,

St. Francis, KS 67756, 785-332-2186