

# Resident of the month honored at nursing home

Ruben Bandel was the June Resident of the Month at the Good Samaritan Village. His guests were his wife, Bernice, and children, Chuck and Cathy Bandel, and Kathleen. Following a power point presentation set to music while photography were shown on the screen, refreshments were served.

Ruben's parents, Thomas and Christianna, came from Russia. Otto, his brother, was born there and Ruben's mother was pregnant with Ruben when they came over so Ruben was born in Cheyenne County on May 23, 1923.

He grew up on the Hackberry, north of St. Francis, with four brothers, Reinhold, Traugott, August and Otto. Two sisters died at a young age.

Growing up was not always easy. He remembers milking cows and working in the fields with horses. However, there were some fun times like playing softball and swimming in the Hackberry Creek.

He attended the Hackberry School up to the eighth grade, then he went to work at the Mills

Ranch. Through his life, besides working at the Mills Ranch, he also worked with painter, Fred Krien. He moved to town and went to work for the county as a maintainer operator.

That, he said, was the best job he ever had! He worked for the county for 20 years. During those years, he worked with Mux Johnson, Wayne Ritchey and Marian Miller. While working for the county, he rescued a pregnant woman in a blizzard. She thought she was in labor, he said, but it turned out to be a false alarm.

One of the things that most changed his life, he said, was the day he met his wife. He and Bernice were at a baseball game and the romance began. They were married at Bernice's folk's house in St. Francis on Feb. 27, 1944. He remembered that it snowed that day.

They didn't go on a honeymoon. Instead, Bernice said, they had to stay at home and take care of the chickens. Their early year's were spent on the farm on the Hackberry

After they were married, Ru-

ben was inducted into the Army where he served for three years, most of that time was spent in Korea. Ruben said that he didn't like the rice in Korea but will eat rice today. It tastes different in the United States, he said.

After they moved to town in the 1960s and he went to work for the county, Bernice went to work at Ideal Supermarket where she worked for 16 years.

Ruben and Bernice had two children, Kathleen and Charles. They have two granddaughters and six great-granddaughters. His granddaughters were special - so special that he would let them put curlers in his hair. I wouldn't give up any of them, he said. They were all special!

While it was Ruben's day, his children were also recognized. Kathleen, Bernice said, went out with friends one night and she didn't come home until late. Her parents went out to find her and, while they were out, Kathleen snuck back to the house and was in bed before her parents returned home.

Charlie also got into trouble when he skipped school one day.



**RESIDENT OF THE MONTH — Ruben Bandel, middle, tells activities director Cathy Loop, left, his lifetime memories. Also pictured is Bernice Bandel**

Ruben, while working, saw him and that evening, he asked him why he wasn't in school. Chuck said he was on a field trip. (Ruben said he didn't believe him.)

Ruben's hobbies included riding horses, woodworking, fish-

ing, camping, boating and gardening. He said he taught many young people how to ski however, he never skied himself. I just loved to drive the boat and take the young ones out, he said.

Ruben and Bernice took trips

to the Ozarks, Colorado Springs and to the mountains.

Ruben entered the Village August of 2012.

His advice to young people is to have "good, clean living."

## Ag Talk with Jeanne

Wheat plot tour recap

Thanks everyone who attended the K-State wheat plot tours this last week! Our attendance was great with over 130 producers and agronomy professionals attending the three plot tours in the Sunflower Extension District.

We covered several topics at the tours, so I thought a quick highlight might be nice. Jim Shroyer, the K-State wheat specialist, spoke at the wheat tours. Also in attendance were Daryl Strouts, the president of Kansas Wheat Alliance, and Drew Hendrick, district representative with Limagrain Cereal Seeds. Kansas Wheat Alliance is the not-for-profit group that releases wheat varieties from Kansas State University and surrounding universities and helps fund the wheat breeding efforts at Kansas State University. Limagrain is a new company to the seed wheat market and has purchased the wheat breeding program from Trio Research in Wichita.

Jim talked about the wheat varieties and told the strengths and weaknesses of the varieties. He also went through his top picks for our area. They are: TAM 111 (Agri-Pro), Grainfield (WestBred), Cedar (WestBred), SY Wolf (Agri-Pro), Winterhawk (WestBred) and T-158

(Limagrain). Another variety that has had a great deal of discussion is Denali. Denali is a variety out of the Colorado State wheat breeding program and is being marketed by the Kansas wheat alliance. We are still looking at this variety and getting a feel for how it is handling these tough growing conditions.

Certified seed wheat availability is on everyone's mind. The word is that there will not be a shortage of seed wheat across the state of Kansas. Central Kansas has really good wheat that is rolling in the combine right now. The challenge is going to be the logistics and availability of certain varieties. Daryl Strouts noted that the certified producers are very aware of the logistics challenges and they are making arrangements to help meet everyone's needs. The best thing is to visit with your seed wheat supplier and make a plan for seed for this fall.

Two insects were also discussed; the brown wheat mite and the wheat stem sawfly. The brown wheat mites are an insect that make quite the appearance in dry years. They are tiny creatures, about the size of a period on a piece of paper. They also have sucking mouthparts and suck the moisture and nutrients

By Jeanne Falk



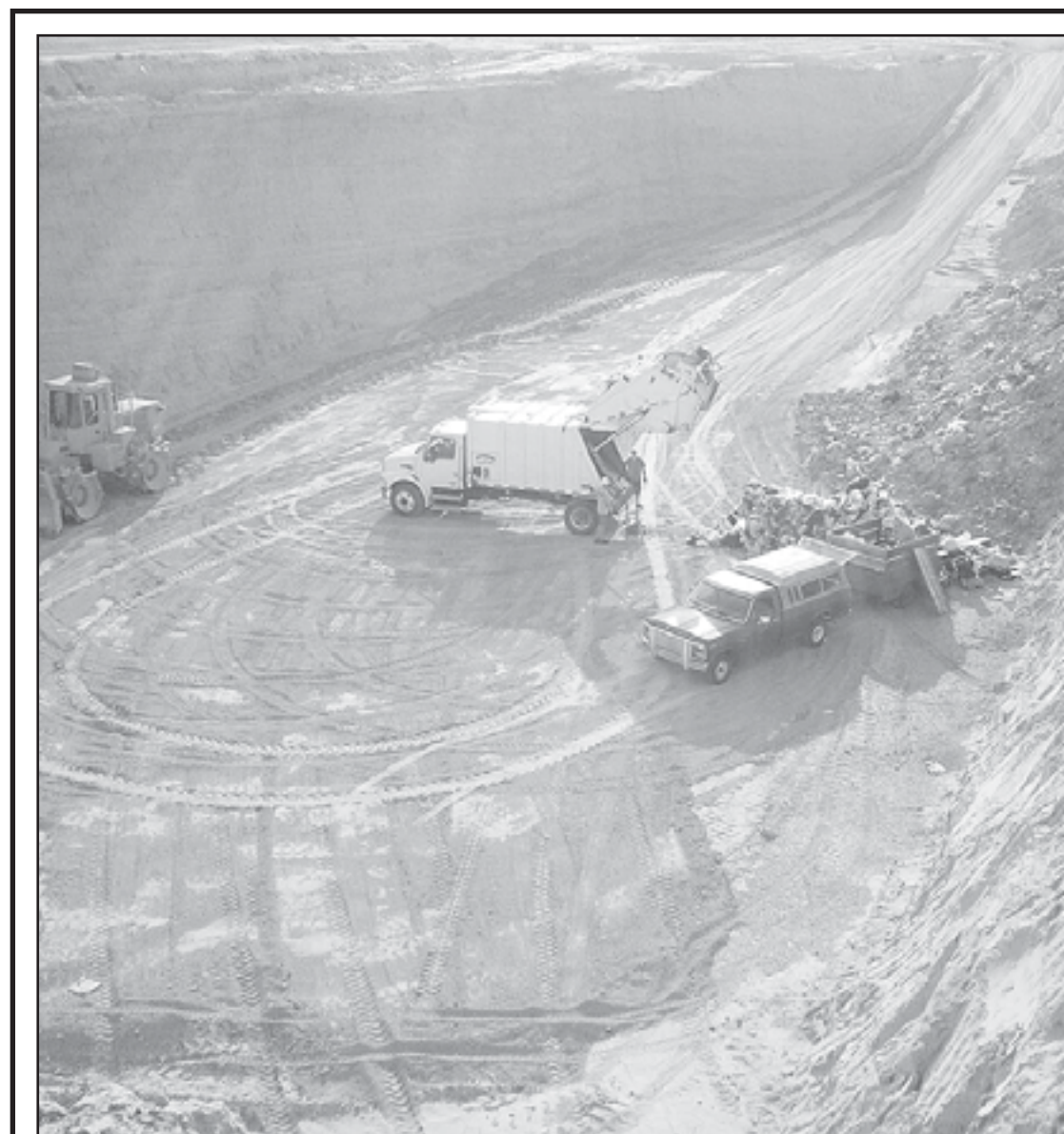
Agronomy Specialist

out of wheat leaves, without actually chewing through them. Their damage is usually most evident on the edges of fields and is characterized by the wheat having a 'silverish' appearance.

The wheat stem sawfly is a pest that has been in the news quite a bit lately. This insect is moving towards northwest Kansas from areas to the north and west (panhandle of Nebraska, Wyoming and northeastern Colorado). We do not currently have this pest in northwest Kansas. It is a wasp-like creature that girdles the wheat stem, causing the wheat to fall over, just above ground level, about a week before harvest. More than anything, producers should just be aware of this pest.

Thanks to the wheat plot co-operators, Sunny Crest Farms, with Junior, Tom and Matt Smull. Thanks also to American Implement for their shop space for supper and to the Cheyenne County Grain Dealers for sponsoring supper. All of the community involvement and support is much appreciated!

All in all, the wheat plot tours in the Sunflower District were very successful. Thanks everyone who attended the plot tours! Please let me know if you have any questions or have specific wheat varieties that you would like to see in the wheat plots next fall.



**FIRST LOAD dumped in the newly dug landfill pit.**

Herald photo by Byron Moberly

## Student News

K-State University

More than 3,350 Kansas State University students have earned semester honors for their academic performance in the spring 2013 semester including several from the local area.

Students listed include Craig Busse, Savannah Isley, Brooklyn Hnizdil, Heather Hnizdil and Lance Leonard.

Students earning a grade point average for the semester of 3.75 or above on at least 12 credit

hours receive semester honors along with commendations from their deans. The honors also are recorded on their permanent academic records.

Craig is the son of Steve and Jan Busse, and Savannah is the daughter of Jeter and Nina Isley, all of Bird City. Brooklyn and Heather are the daughters of Tom and Marilyn Hnizdil, St. Francis; Lance is the son of Merle and Laurie Leonard, McDonald.

## BENEFIT DINNER/AUCTION

FOR

**Marv Carlock**  
Saturday, July 6  
Elks Club, Wray, CO.

Dinner starts at 5:30 p.m.  
and the Auction starts at 6:30 p.m.

If you would like to donate items, cash or food please contact Eldon Van Vickle at Joe's Liquor Mart: 970-332-9800 or 970-301-9529, TJ McArthur at Backroad Speed Shop 970-332-5057 or 970-597-0024, Glenn Mahon at Tri-State Auction Service 970-630-7363 or Heather 970-630-9162. Items can be dropped off at any of the above locations and also at Valley Automotive in Laird, CO

## Display the Red, White & Blue and then come join the fun!



**2013 Cheyenne County July 4th Celebration**  
Thursday, July 4th  
in St. Francis

Enjoy daytime and evening activities and then at dark a tribute to America with a large fireworks display set to patriotic music.

(Donations for the fireworks will be collected by volunteers on golf carts prior to the start of the show. Thank you in advance for your generosity.)



**Natural gas energy, people energy. All for you.**

Raw steak and an empty propane bottle makes for a miserable night.

A natural gas grill means a great night and great food.

Your life, our energy.



## Brunk Brats

### Fireworks

June 29th - July 4th

On Benton Street

East of Poling Chiropractic



## The Stamps

**You Can't Wait to Get Your Hands On.**

- PRE-INKED (NO STAMP PAD NEEDED)
- CLEANER, EASIER TO USE
- 50,000 IMPRESSIONS BEFORE RE-INKING
- DOZENS OF MODELS

**The Saint Francis Herald**