

Several rattlesnakes found in city limits

By Doug Sloper
dsloper@nwkansan.com

There may be something lurking in your garden or in your bushes that is just afraid of you as you are of it: Snakes!

The St. Francis police department has reported sightings of rattlesnakes in town over the last several weeks and is urging citizens to be alert when working in the garden or yard.

There are several different types of rattlesnakes that are common to the Cheyenne County area, but the most common is the prairie rattler. All

rattlesnakes are venomous and if bitten, immediate medical care must be sought.

The Prairie rattler is generally tan and brown which helps it blend into the background easily. It has a pit on each side of the head, small scales covering the top of the head with a large scale over each eye, dark gray of brown patterns on the back, and dark bands on the rattle tail. It prefers canyons and open prairies and roams both during the day and at night in the summer.

So Be Aware and Be Safe!!

Students receive scholarships

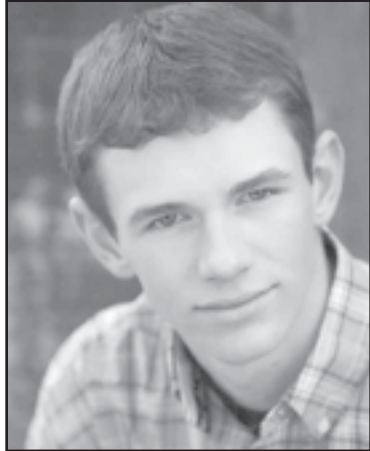
Local FFA members, Kenan Reeh, Cheylin High School, and Laura Brunk, St. Francis Community High School, were among the 83 Kansas students awarded \$1,000 Ford Trucks/Built Ford Tough scholarships during the third session of the 85th annual Kansas FFA State Convention on Thursday, May 30.

The Built Ford Tough FFA Scholarship Program recognizes FFA members' talents and accomplishments while encouraging their future academic achievements.

"We're proud to recognize these student leaders for their



Brunk



Reeh

growth in the FFA and passion for the agriculture industry,"

said Brent Rueb, manager of Yost Ford in St. Francis.

Drive with care in work zones

Albert Horn, Kansas Department of Transportation Supervisor in Edwardsville, knows you have to be alert every second in a work zone.

"On several occasions, most of us have had to run for cover, safety or protection because we heard tires screeching, horns blaring and brakes being applied," he said.

Early in his Kansas Department of Transportation career, Mr. Horn was collecting trash along I-35 in the Kansas City area when a semi-tractor trailer locked its brakes and jack-knifed while avoiding another vehicle.

"The rig slid past me before ending up in the median about 100 feet from where I was standing,"

he said. "I then realized how fortunate I was and how dangerous this job could be."

He told these stories at the statewide safety event today in Topeka. He was joined by fellow department employee Gary Moulin, transportation secretary Mike King and Kansas Highway Patrol Major Mark Goodloe.

The safety event was one of several activities taking place in Kansas as part of National Work Zone Awareness Week, April 15-19, which was an effort to raise awareness of the hazards and dangers highway workers and motorists face every day.

Last year in Kansas work zones, 608 people were injured

and eight people were killed (one highway worker from R.A. Knapp Construction Inc., one pedestrian and six motorists).

More information on work zone safety can be found on Kansas Department of Transportation's website, www.ksdot.org by clicking on the Go Orange logo.

When traveling through a work zone, motorists should:

- Follow traffic control.
- Stay alert.
- Watch for workers.
- Expect delays.
- Allow ample space between you and the car in front of you.
- Change lanes when directed to do so.



KITES WERE FLOWN at the end of school. Eighth graders, Sophie White, left, and Jenna Confer get their kite ready to fly.

Herald staff photo by Doug Sloper

RELAY

Continued from Page 1A

be provided by Randy Smestad. There will be drawings for door prizes throughout the night for the teams.

The committee for the relay includes: Pat Rose, chairman; Vicki Coates, Betty Loudon, John Finley, Christy Wurm, Tammy Grice, Allison Grice, Crystal Schultz, Bridgette Antholz, Cara

Hunt, Bailey Merklin, Nikki Rose, Dale Rose, Ginger and Dusti Chadwick and Brandee Sassee

Come down and help this county have one of the state's best

relays, Mrs. Loudon said, and if you have any questions about the relay, please call Pat Rose at 785-332-5348.



DEERE SEASON

NEW X739

0% FOR 60 MONTHS*

ON THE NEW X700 SIGNATURE SERIES™

- 25.5 hp (19.0 kW)*
- 54-in High-capacity mower deck with AutoConnect™
- Full-time 4WD
- Exclusive 4-wheel steering
- 4-year/700-hour limited warranty**

LOOKS LIKE A BEAUTY. BUILT LIKE A BEAST.

NEW X710

- 22 hp (16.2 kW)*
- 48-in. mower deck
- Power steering and hydraulic lift
- 4-year, 700-hour limited warranty**

NEW X758

- 24 hp (17.9 kW)*
- 60-in High-capacity mower deck with AutoConnect
- Full-time 4WD
- 4-year, 700-hour limited warranty**

Light the way to a cure

Keep the fire of hope burning by purchasing a luminaria candle in memory of someone lost to cancer, in honor of someone still fighting, in special recognition of someone who has beaten this dreaded disease or to recognize a caregiver.

Relay For Life of CHEYENNE COUNTY

SATURDAY & SUNDAY – JUNE 8 & 9
7 p.m. - 7 a.m.
AT SAWHILL PARK IN ST. FRANCIS

Complete this form and send it along with your donation to:
The Saint Francis Herald, P.O. Box 1050, Saint Francis, Ks. 67756

Name: _____

Address: _____

City: _____

Daytime Phone: _____

Please join us for the luminaria ceremony at 9 p.m. or dark \$10.00 per luminaria please!

In honor of

In memory of

In honor of

In memory of

In honor of

In memory of

TOTAL ENCLOSED _____

Makes Checks Payable To: The American Cancer Society

JOHNDEERE.COM

AMERICAN IMPLEMENT

COLBY, KS • 405 W. HORTON AVE. (800) 532-6529	OAKLEY, KS • 3670 US HWY 40 (800) 209-4001
ELKHART, KS • 364 US HWY 56 (800) 445-5917	SCOTT CITY, KS • NORTH HWY 83 (800) 779-7244
GARDEN CITY, KS • 2611 WEST JONES AVE. (800) 475-4114	ULYSSES, KS • 2718 WEST OKLAHOMA AVE. (800) 356-3460
GOODLAND, KS • 1104 WEST HWY 24 (877) 320-4020	WALSHP, CO • 42494 WEST HWY 160 (888) 324-5284
HUGOTON, KS • EAST HWY 51 (800) 544-9833	WHEELER, KS • 685 KANSAS AVE. (800) 832-2124

*Offer valid from March 1, 2013, until July 31, 2013. 0% APR is for 60 months only. Subject to approved credit on Revolving Plan, a service of John Deere Financial, f.s.b. For consumer use only. No down payment required. Other special rates and terms may be available, including financing for commercial use. Available at participating dealers. Prices and models may vary by dealer. *The engine horsepower and torque information are provided by the engine manufacturer to be used for comparison purposes only. Actual operating horsepower and torque will be less. Refer to the engine manufacturer's website for additional information. **Hour limitations apply and vary by model. See the LIMITED WARRANTY FOR NEW JOHN DEERE TURF & UTILITY EQUIPMENT at dealer for details. John Deere's green and yellow color scheme, the leaping deer symbol and JOHN DEERE are trademarks of Deere & Company.