

Tornado season has arrived

Tornado season is here. The most recent tragedies were in Oklahoma, which reminds everyone to be prepared when the tornado siren sounds.

Last week, Ryan Murray, emergency manager, was asked by Cathy Loop, Good Samaritan Village staff, to speak at the Good Samaritan Village monthly meeting about the nursing home emergency plans.

We discussed shelter-in-place plans for risks such as tornado sheltering and hazmat, Mr. Murray said. The shelter-in-place plan, he said, is where residents and staff

would stay within the building, be safe and have shelter.

This could be for a wide range of incidents, he said, such as air quality concerns with a chemical release where they would turn off ventilation units pulling in outside air, close all doors and windows, to protect everyone within the building from outside air contamination. Also moving patients to safe areas within the building for weather events such as strong winds, hail and tornados.

They also discussed evacuation plans and alternate care sites if the need would arise to evacuate the

building all together. This, Mr. Murray said, would include things such as flood, utility failure and fire.

Most of the staff was well aware of evacuation plans and alternate care sites as they had experienced quickly moving residents during the October 2010 fire at the nursing home

I was extremely impressed with the plans and preparedness that were put into action back at the fire, Mr. Murray said, and how quickly the staff and responders were able to evacuate the building, and move patients to sheltered locations. We can all take the experience forward and use to better plan and prepare for future emergencies.

"It is always time well spent discussing emergency plans with facilities in our county," he said. "We gain a better understanding of what is expected of emergency responders when responding, and also what is expected of the facility staff to provide to the emergency responders, understanding what capabilities are available, allowing adjustments in plans and procedures accordingly. In return we save valuable time, and manage resources more effectively in emergency/disaster situations."

Graduating seniors receive scholarships

All graduating seniors received at least one scholarship during the St. Francis Community High School graduation ceremony on Sunday, May 19.

Principal Scott Carmichael reported students received approximately \$162,000 in scholarships.

Those receiving awards, the scholarships and amounts were:

Caleb Frink: Wyoming Technical College; Pete Henry Vocational, \$2,000.

Aubrey Mills: Colby Community College, Admission Scholarship, \$300, Cheyenne County Young Miss, 3rd Runner Up, \$185; Ricky Straub Memorial, \$100, Pete Henry, \$750.

Blaine Guggenmos: Colby Community College; Pete Henry, \$750.

Allyson Northrup: University of Kansas, Academic Scholarship, \$1,000 renewable; Rebekah's Scholarship, \$100; Ruth Moore Memorial, \$100; Masons Essay Contest Winner, \$250; Cheyenne County Young Miss, first Runner Up, \$325; Marguerite Magley Memorial, \$750; Pete Henry, \$1,000.

Sarah Whitmore: Kansas State University; St. Francis Music Club, \$100; Larry Walz Music Scholarship, \$300; Walter Stephenson Memorial, \$400; Gordon and Betty Orth Music Scholarship, \$500; Brink Music, \$250; Medallion Scholarship, \$5,000; Greene Scholarship, \$1,000; Pete Henry, \$1,500; Dane G. Hansen, \$3,000 renewable.

Casey Keller: Kansas State University; K State Activity Scholarship, \$1,500; Peace Lutheran Church Scholarship \$200; Pauline Wagner Memorial, \$200; St. Francis Firemen, \$300; Bron DeGood Memorial, \$350; Walter Stephenson Memorial, \$400; Cheyenne County Wildlife Essay, \$500; Greene Scholarship, \$1,000; Pete Henry, \$1,500.

Christina Harris: Eric Fisher Academy in Wichita; Grace and Fizz Faulkender Art Award, \$100; Ethyle Roelf Memorial \$315; Pete Henry Vocational, \$2,000.

Mikey Leibbrandt: Northwest Kansas Technical College; Cheyenne County Cruisers, \$250; Pete Henry Vocational, \$2,000.

Noelle Sherman: Undecided; Pete Henry, \$750.

Tony Meyer: Northwest Kansas Technical College; Pete Henry Vocational, \$2,000.

Jandy Dunn: Colby Community College; Cheyenne County 4-H, \$250; Pete Henry, \$750.

Kaleb Zwick: Garden City Community College; Pete Henry Vocational, \$2,000, Garden City Community College Ag. Scholarship, \$500, Salem Lutheran Church, \$200.

Taylor Archibald: University of Northern Colorado; Out of State Scholarship, \$6,000 renewable; Cheyenne County 4-H, \$250; Pete Henry, \$1,000.

Thomas Douthit: Highland Community College; Don Worley Memorial Track, \$100; Bud Burnham Memorial Scholarship, \$500; Cheyenne County Wildlife Essay, \$500; Carl and Mildred Sperry Scholarship, \$500; Pete Henry, \$750; Greene Scholarship, \$1,000.

Clarice Neitzel: University of Kansas; Academic Scholarship, \$1,000 renewable; Zielke Memorial Scholarship, \$500; Pete Henry, \$750

Foster Grant: Colby Community College; Colby Community College Admissions Award, \$300; Colby Community College Academic Award, \$400; Pete Henry, \$750.

Laura Brunk: Fort Hays State University; Bronze Academic Award, \$700; Award for Agriculture, \$900; Cheyenne County Young Miss, Second Runner Up, \$440; Knights of Columbus Scholarship, \$250; PEO Scholarship, \$350; Legacy for Education Scholarship, \$400; Walter Stephenson Memorial, \$400; Lions Club Scholarship, \$500; Cheyenne County Wildlife Essay, \$500; Robert Yost Memorial, \$500; Brink Music, \$250; Ray Huffman Athletic Award, \$500; Gary and Helen Brown Ag Scholarship, \$700; Yost Ford FFA Scholarship, \$1,000; Greene Scholarship, \$1,000; Pete Henry, \$1,500.

Joey McCormick: Northwest Kansas Technical College; Pete Henry Vocational, \$2,000; Salem Lutheran Church, \$200.

Lucas Carmichael: Metro State University of Denver; Peace Lutheran Church Scholarship \$200; Robert Yost Memorial, \$500; Pete Henry, \$750.

Tyler Raby: Kansas State University; Dr. Peck Memorial, \$500; Pete Henry, \$1,000; Greene Scholarship, \$1,000.

Gus Jardine: Nebraska School of Technical Agriculture; Cheyenne Co. Cruisers, \$250; Pete Henry Vocational, \$2,000.

Dylan Peter: Barton County Community College; Academic Achievement Award, \$500; Peace Lutheran Church Scholarship, \$50; VFW Post 1528 and It's Ladies Auxiliary, \$300; Pete Henry, \$750.

Jordan Easter: Northwest Kansas Technical College; Rising Star Rebekah Lodge, \$100; Cheyenne County Cruisers, \$250; Pete Henry Vocational, \$2,000.

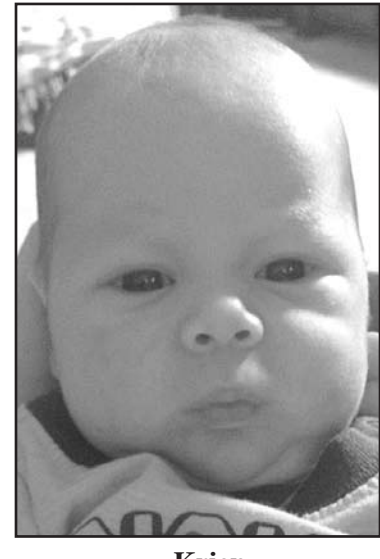
Dillion Straub: McPherson College; McPherson Football Scholarship, \$3,000 renewable; McPherson Merit Scholarship, \$4,000 renewable; Billy Samler Cheyenne County Cruisers, \$500; Rising Star Rebekah Lodge, \$100; Ricky Straub Memorial, \$100; Peace Lutheran Church Scholarship, \$200; Pete Henry Scholarship, \$750.

Steve Nelson: Colby Community College; Leadership Scholarship, \$1,000 renewable; Masons Essay, \$100; Peace Lutheran Church Scholarship \$200; St. Francis Firemen, \$300; Walter Stephenson Memorial, \$400; Brink Volunteer, \$250; Pete Henry, \$1,000; Greene Scholarship, \$1,000.

Zach Gienger: Pittsburg State University; Academic Scholarship, \$1,000; Activity Scholarship, \$750; Compton Scholarship, \$500; Lions Club Scholarship, \$500; Brink Volunteer, \$250; Alice Gillespie Athletic Award, \$500; Ray Huffman Athletic Award, \$500; Alice Gillespie Memorial, \$1,000; Pete Kinen Memorial, \$1,000; Pete Henry, \$1,500; Greene Scholarship, \$2,000; Dane G. Hansen, \$3,000 renewable.

Dylan Wolaver: Northwest Kansas Technical College; Pete Henry Vocational, \$2,000.

Keegan Sherlock: Northwest Kansas Technical College; Fred D. Magley Memorial, \$100; Pete Henry Vocational, \$2,000.



Krien

— Introducing —

Maddox Dennis Krien was born Feb. 26, 2013 in Salina. He weighed 6 pounds, 10 ounces and was 20-inches long. He is the son of Blake and Cassondra Krien, St. Francis.

Maddox's grandparents are Timothy and Lei Ann Barnett of Colby and Dennis and Iva Krien, St. Francis. Great-grandparents are Sondra Huser, Lamar, Colo.; Mildred and Jerry Green, Colby; Ferdinand Krien, St. Francis; Arlan and Nancy Huser, Syracuse; Hugh and Fran Harper, Custer, S.D.; and Irene Hardin, Paris, Texas.

Great-great-grandparents are Eldon "Bub" and Dorothy Reed, Syracuse; and Mary Harper Brown, Cheyenne, Wyo.



HELENE LANDEMBERGER is part of storytelling at the Cheyenne County Museum.

Museum to come alive with history on the early settlers

The Cheyenne County Museum will come alive on June 1 from 2 to 4 p.m. Experience history as docents tell how early settlers lived.

Storytellers will be in costume at the kitchen stove, the laundry room, the old Palace Market, the buggy trail, and the cowhide coat-room. Even the schoolmarm will be at her desk. Enjoy piano music at the old country church next door, where the church historian will be on hand to tell the church's story.

Thanks to those "Friends" who have joined hands in support of the museum! Your donations and volunteer hours are helping make proposed projects become realities.

Lexan has replaced the broken window glass of the old church without taking away from the Prairie Gothic architecture. New glossy museum brochures are now traveling around the state, advertising this historic county resource. Tempered glass panels have been purchased to enhance the large display of period costumes.

A brick walkway connecting the old church and the museum is in the planning stages. Bricks taken from downtown sidewalks are being donated by the city. Volunteers have been working this winter to bring new life to old exhibits.

Each year necessary expenses for the church and museum

amount to nearly \$14,000. Of that, \$4,000 comes from a county allotment. The rest is made up by donations, book sales, fundraisers, Historical Society memberships (\$10) and Friends of the Museum (\$25).

If you are not a Historical Society member or a Friend of the Museum, please join the team, said Janet Carman, board member. Everyone in the county should support the Museum of Cheyenne County. The Museum's purpose is to preserve our history and provide an interesting peek back at the lives of our ancestors.

Join us Saturday, June 1. Step back into the past and enjoy a historic afternoon.



Jason Padgett and his daughter, Mahra, have been working on the compost bins that will make the growing medium for the Community Garden and Farmer's Market. Not pictured but also helping are Joe Caldart and Joe Weverka. The Community Garden and Farmer's Market, will open for alumni weekend on June 15.

BUSINESS CARD DIRECTORY

*To list your business drop us a card!
Call 785-332-3162 today.*

Howards Tri State Construction

>Drywall >Painting >Carpentry
 >Roofing >Tile Work >Insulation
 >Garages >Additions >Basements
 New or remodel- We do it all!
Free estimates!
Jason 1-970-630-9051
Travis 1-970-630-5122

Jensen's

Kay Jensen – Owner
 785-332-2317
Pete Jensen – Salesperson
 785-332-8215
 Box 281 - St. Francis, KS
Call us for monuments to honor your loved one

Real Estate Auction

Pep and Fern Martin Estate & Real Estate
Saturday, June 1 • 10 a.m.
 Sale Site: Legion Hall, Benkelman, NE
 Real Estate - Household - Dishes - Antiques - Collectibles
 Shop & Garden
 FOR MORE INFO & PICTURES VISIT <http://midwestauction.com>
 —Since 1969—
RAMBAT AUCTION
 785-426-2049 Bird City, KS Cell: 785-332-0452

The Saint Francis Herald

Tim Burr
 Advertising Manager
 tburr@nwkansas.com

 310 W. Washington PO Box 1050 St. Francis, KS 67756
 sf.herald@nwkansas.com 785-332-3162 785-332-3001 (fax)

St. Francis Mercantile Equity Exchange

Doug Ross
 Grain Originator-Sales
 Cell-785-332-4976
rossdoug83@gmail.com
 1-800-295-2113 Toll Free
 785-332-2113 Main Office & Grain
 785-332-2421 Station, Bulk Fuels, LP
 785-332-2129 Fertilizer, Feed, Chemicals, Seed
 308-297-3223 Haigler Branch
 785-332-3450 Fax
 123 N. River St. • St. Francis, Kansas 67756