

Bulletin Board



Clarence and Madeleine Roberson

Couple celebrates wedding anniversary

Clarence and Madeleine Roberson celebrate their marriage of 65 years on June 15. After being introduced to Clarence by his sister-in-law, who worked with Madeleine at the phone company, Clarence commuted from St. Francis to Denver to court Madeleine every weekend until they were married in St. Catherine's Church in Denver. Madeleine and Clarence enjoy

living on the farm where they began their married life together and raised their six children, better known as the Dirty Half Dozen. They are the proud grandparents of 10 grandchildren and five great-grandchildren.

Anyone who would like to send a card to join in the celebration can do so by sending greetings to 1955 Road E, St. Francis, KS 67756.

Student graduates with biology degree

Kansas Wesleyan University has announced the list of 2012 graduates which include Heidi Yonkey, Wheeler. She was among 713 students receiving bachelor's degrees on May 27. Heidi received a bachelor's of science degree in biomedical chemistry and biology.

She was selected for the top senior girl Hall of Fame Student award in recognition of her campus involvement, academic and personal achievements as well as being an all-around outstanding example to the campus and community.

Heidi received the Jane Goodall award. This award is from the

biology department. Heidi was a member of the Beta Beta National Biological Honor Society. She is the president of the Chemistry Club and a president of the Biology Society. She was also active in the Student Government Association where she served as vice president. Heidi is the daughter of Gary and Miriam Yonkey, Wheeler.



Yonkey

Memorial service

The memorial service for Jack Reinhold will be held at 12:30 p.m. on Friday, June 15, at the St. Francis Cemetery. There will be visitation after the service at the United Methodist Church, St. Francis.

Funeral service

Anna Marie Lippert, 73, died on June 6, 2012, in Wray, Colo. Funeral services will be held at 3 p.m. on Saturday at Salem Lutheran Church, rural St. Francis. Burial will be in the Salem Lutheran Cemetery.

Memorials may be made to the Anna Marie Lippert Memorial Fund.

Congressman Huelskamp

Congressman Tim Huelskamp will be in St. Francis at 8 a.m. on Friday, June 15, in the courtroom on the second floor in the courthouse.

Car wash

The 4-H Shooting Sports kids will be holding a car wash on Saturday starting at 9 a.m. at Troy's Transformations, St. Francis. The money raised will help buy supplies for the 4-H'ers.

St. Francis website

Check out the updated St. Francis website at www.stfrankskansas.com.

Church speaker

There will be a Women of Faith simulcast at the First Christian Church on Saturday, June 23, starting at 9:45 a.m. Call 785-772-7308 for more information.

Commissioners - time change

Because of the early harvest, the Cheyenne County Commissioners will meet early, at 7 a.m., on Friday in the commissioners' room in the courthouse.

Art walk

The Draggin' Main art walk will be held from 4 to 6 p.m. on Friday on St. Francis Main Street. There will be art, live music, food and beverages during the event. See article for more information.

Alumni banquet and dance

St. Francis high school alumni banquet and dance will be held on Saturday. Registration starts at 5 p.m. at the high school.

Free popcorn

The Cheyenne Theater Committee is asking, that the first weekend of the month, those attending the movie bring a canned food donation for the Food Pantry and they will receive a free sack of popcorn.

Note: As of May 25, show time is 8 p.m.

80th birthday

Pat Carman celebrated her 80th

birthday on Wednesday, June 13. Her family is requesting that cards be sent to her at 200 N. Ash St., Apt. 15, St. Francis, KS 67756.

Bratwurst feast

The Cheyenne County Historical Society is sponsoring a bratwurst feast at the museum on Saturday, June 16, from 11 a.m. to 1 p.m. Former graduates and others are urged to come enjoy the food, visit with classmates and check out the museum and Old Country Church.

Wesleyan service

Starting Sunday, June 17, the Wesleyan Community Church of Bird City will be having Sunday evening services, starting at 7 p.m. We will have Contemporary Praise and Worship, followed by interactive preaching and Bible Study.

Tornado Safety drills

The Cheyenne County Communications Center will conduct monthly siren testing starting the second Wednesday in April at 9 a.m. The testing will continue through the end of September.

Horse show

The Cheyenne County 4-H and open horse show will be held on Sunday, July 15, at the fairgrounds in St. Francis.

Grief Support Group

The Grief Support Group will meet every second and fourth Mondays at 2 p.m. Meeting place is the Immanuel United Methodist Church, 116 E. Fourth, Bird City. For more information, call 785-734-2739.

The group is a confidential support to all who have experienced the loss of a loved one in a safe place of mutual help and comfort.

Emergency number

The new phone number for Cheyenne County Communications Center (Dispatch) for non-emergency calls: 785-332-8822, Dial 9-1-1 for an emergency.

Narcotics Anonymous

Narcotics Anonymous meetings are held at 104 W Webster/Methodist Education Building on Thursday nights at 7:30 p.m. Contact (785) 342-0028.

Weather

Date	High	Low	Prec.
June 5	92	59	
June 6	88	62	
June 7	84	63	
June 8	90	59	
June 9	103	58	
June 10	80	54	
June 11	83	55	

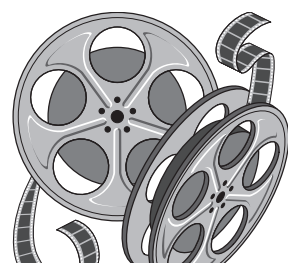
1,000th movie to play at theater

By Nathan Fiala
nfiala@nwkansas.com

Friday, June 15, is set to be a busy night in St. Francis with the art walk and alumni reunion, but it's also the night of the 1,000th movie shown at the Cheyenne Theater.

Renovated and reopened on Friday, May 1, 1992, the theater first showed the Disney animated movie The Great Mouse Detective, voiced by Vincent Price. The price of a ticket was \$1.50 for kids and \$3 for adults. Other movies shown in later weeks were Stop, Or My Mom Will Shoot, starring Sylvester Stallone, and Fried Green Tomatoes, with Kathy Bates.

This weekend, the movie is Madagascar 3: Europe's Most Wanted in 3D. It is a computer



animated movie with voices by Ben Stiller and Chris Rock. Holly Bryan, new theater manager, said to celebrate the 1,000th movie, everyone attending on Friday will receive free popcorn.

In 20 years' time, the theater replaced the seats in 2005 and upgraded to a 3D digital projector in 2011. The prices have increased to \$4 for children and \$6 for adults, and a dollar extra for 3D movies.

Wray quilt show set for June 23

The 13th outdoor quilt show is set for Saturday, June 23. The show will be held from 9 a.m. to 4 p.m. on Wray's Main Street and at the Wray Museum.

There is just enough time for you to finish those last minute bindings, and put your newest quilted creation into the show, said Brian Clements. Or, maybe you've got a project from months, or years ago that could use a bit of fresh air.

Everyone is encouraged to exhibit their work for everyone to enjoy.

And who knows, Mr. Clements said, you might be the viewer's choice quilt, earning you a wonderful new Janome JEM Gold sewing machine, courtesy of all of our sponsors.

There will be an open sewing night at RR Branded, 305 Main Street in Wray, on Friday evening, sponsored by the local quilt guild, Quilter's Anonymous. Quilters may bring any project they are working on, and spend an evening with friends. There

will be some items on display; just to give people an idea what this group is all about. A fun time is guaranteed, he said.

A patchwork quilt will be given away. The quilt is on display in the window at Rainbow Fabrics. Tickets can be bought there, or from any of committee members: Shana Gardner, Nicole Harford, Wanda Harford and Brian Clements.

Those wishing to volunteer some time to help with Quilts of the Plains are welcome to come to a party at the home of Joe Foltmer and Mr. Clements on Tuesday, June 19, at 6:30 p.m. The address is 403 Franklin in Wray.

Dinner will be provided for all of the volunteers, and final assignments will be given at that time. If you can help, please contact Wanda Harford or Shana Gardner. All volunteers are appreciated.

Quilts of the Plains helps the Wray Chamber of Commerce, in their mission to provide activities, such as Wray Daze and the Harvest Festival each year.

Wedding Shower for Hayley Brown

Tuesday, June 19
7 p.m.
First Christian Church
118 E. Webster, St. Francis



James E. Reeves, DPM
Podiatrist/Foot Specialist
Reconstructive Surgery
Foot & Ankle Injuries
For appointments call:
Rawlins County Health Center
785-626-3211
Wed., July 4
Cheyenne County Hospital - P.M.
210 W. 1st • 785-332-2104
Thurs., July 5
Atwood (a.m.) • 626-3211
Colby (p.m.)
CSMC, 175 S. Range
785-462-3332
CMC, 100 E. College Dr.
785-462-7511
Fri., July 6
CSMC at 9 a.m.

Specials

Sunday Ham

Harvest Blow Out
Specials on cold cases of water and drinks

Call ahead for meals to take to the field.
Boxes of chicken available on request.
Bag Ice and Harvest supplies.

Majestic Service & Truck Stop

510 West Highway 36
St. Francis, Ks.
785.332.2905

YOST

530 E. Business US Hwy. 36 St. Francis, KS 67756
800-524-9678 785-332-2188 yostford.com

Swap Your Ride Sales Event

1998 Dodge Durango SLT, #T7770B	\$3,750
1998 Chevy Tahoe 4-WD, #T0869C	\$4,900
2001 Ford Excursion XLT, V10, 4x4, #T9176M	\$8,500
2002 Ford F-150 Lariat, #T3872C	\$6,900
2002 Ford Ranger 4x4, S-cab, 4x4, V-6, #T9176B	\$8,500
2003 Buick Lesabre, Leather, #T8153	\$5,800
2004 Volkswagon Touareg, low miles, #T1726C	\$16,825
2005 Ford F-250 XLT, Super Cab, #T1920A	\$16,500
2005 Ford F-250 Lariat, L. Box, #T9945A	\$17,500
2006 Ford, S/C, 4x4, long box, Biege Cloth, #T3241	\$14,500
2006 Ford 250, R/C, L. box, Local Trade, #T4374A	\$18,500
2007 Ford F150 Lariat Crew Cab, Leather, #T0005A	\$25,500
2007 Ford F-150 King Ranch, Crew Cab, 69K, #T6497B	\$27,000
2007 GMC Yukon XL, loaded, #T5284A	\$25,995
2007 Honda Pilot, Fully loaded, #T9712A	\$20,500
2008 Mercury Mariner, AWD, Leather, #27020A	\$14,900
2008 Mercedes C300 Sport, loaded, #4538VA	\$28,500
2008 Ford Expedition King ranch, #T7062A	\$29,475
2009 Lincoln MKZ, Super low miles, #85233A	\$27,900
2009 Cadillac STS, loaded, #T2882A	\$29,000
2009 Nissan Altima, loaded, #22328A	\$17,000
2010 F-250 Super Cab Lariat, 4x4, 6.4, #50842A	\$44,000
2011 Ford Edge Limited, #T8768A Was \$35,700 Now \$31,300	
2011 Chevy Impala LT, 34K, #06614B	\$21,000

View all of our inventory at www.yostford.com

Thank you!

Now that another school year has passed and all the home athletic events are complete, a big huge THANKS goes out to all the staff, faculty, students and community people who helped out this school year and the last 15 years. I know I've thanked you before but every minute of it was greatly appreciated. I truly couldn't have done it without you.

Thanks Again,
Alice Kinen, Assistant Activities Director

SHOWTIME: 8 p.m. 1 hr. 33 min.

Madagascar 3D

June 15, 16 & 17 Comedy/Action/Adventure/Animated/Sequel
Ben Stiller, Chris Rock, Jada Pinkett Smith PG

CHEYENNE THEATER St. Francis, KS 785-332-2747

Children 12 & Under: \$4 All Others: \$6
3D Movies: Children 12 & Under \$5 All Others: \$7

CHEYENNE COUNTY HOSPITAL

210 W. 1st • St. Francis, KS
785-332-2104

- Send email cards to patients at the hospital
- Check out the nursery
- Find out the latest health information
- Pay your bill on-line

All at www.cheyennecountyhospital.com

Solve with Ease

D	I	S	C	S	A	L	L	A	Y	A	N	G		
O	N	E	O	N	M	E	A	N	A	L	O	E		
P	A	W	N	E	E	P	A	W	N	N	O	N		
E	N	S	N	A	R	E	D	T	R	I	K	I	E	
S	P	O	D	E	E	Q	U	I	N	E				
C	O	V	E	R	T	U	R	N	Y	O	K	O		
A	R	I	E		A	L	O	N	G	A	D	A	M	
R	E	D		R	O	T	O	F	N	O	T	E		
				E	R	A	S	E	R	A	K	R	O	N
A	P	P	E	A	S	E	R							
S	E	E	D			H	I	A	W	A	T	H	A	
H	A	R	E			S	W	A	N	E	S	W	A	N
E	L	S	E			P	A	V	E	S	H	A	R	D
N	E	E	D			A	G	E	R	T	E	S	T	S

American Profile

Celebrating Hometown Life

See American Profile magazine in this week's issue of **The Saint Francis Herald**

(available in local area only)

Brought to you by The Herald

"Your sponsorship could be right here."

For more information contact: **Tim Burr** at 785-332-3162