

# Law enforcement officers meet with city council

**By Nathan Fiala**  
nfiala@nwkans.com

The St. Francis City Council met on Monday night, Nov. 14, with the county and city law enforcement both present.

Cheyenne County Sheriff, Craig Van Allen, along with deputy John Lanz, visited the council to clear up any misunderstandings as to communication and

cooperation with the St. Francis Police Department. They assured the council that both departments want to offer their services to serve the community. Police Chief Shane Guggenmos indicated he and the sheriff had already talked about the issue. Council member Bruce Swihart said it was good news to hear.

**Power supply**

Allan Miller, chief executive officer of PrairieLand Electric Cooperative, along with Chuck Look, Ken Roberts and Beth Looney, presented a power supply agreement to the city. They talked about their company, their diversified power sources, and the terms of the contract, the same contract they extended to their rest of their customers, including Kansas Municipal Energy Agency, the energy broker who had talked with the council at the last meeting. The city currently has a contract with KMEA for their power supply and it expires at the end of the year.

Handouts with current and projected costs were given to the council. J.R. Landenberger, city superintendent, was absent from the meeting. City attorney Mike Day said that without Mr. Landenberger present, they could not make a decision. They will discuss the issue further and make a decision at a later date.

**In other business**

There was nothing new on property cleanup or a new drop box for city utility bills. City Clerk Glorianne Milne said the response to bills being mailed has been good and that they will move to paper bills instead of a post card as that way, notices and other items could be more easily sent.

Mayor Scott Schultz said that Beckman's Carpet Cleaning Service would be in soon to clean the carpet.

The city also received a bid on 1.5 acres of property. Mr. Landenberger would need to be consulted for particulars and the bid was approved.

Since the St. Francis Chamber of Commerce is disbanding, the scrip money account would need to be changed, a new tax identification number would need to be assigned, along with a responsible person or entity in control of the account. The council was in favor of these changes and Mrs. Milne will look into the matter further.

There were no building permits and no attorney report.

Mr. Guggenmos, in his police report, reiterated he had already talked with the sheriff to work together to respond to emergency calls. He also said the new radios should be programmed soon and that he would need 30 minutes or less of executive session for personnel. Council member Paula Keller asked about the trash and noise on Washington Street. Mr. Guggenmos said there wasn't much he could do about the noise and had not seen a lot of litter in the area either.

Council member Roger Jensen said that Krutsinger Construction and Redi Mix, Benkelman, had not been in town to work on the curbs and gutters on Washington Street. Mr. Jensen said Mr. Krutsinger had apologized and would now wait until spring to do the work, and would still honor his previous quote.

# It's about time to mulch plants for winter season

The time to mulch plants for winter is after frost is in the ground.

In the central United States, that's usually sometime between mid-November and early December or ... about four to six weeks after the area's average first-freeze date.

This timing allows plants to go from fall to winter on their own, entering dormancy normally. Mulch applied after that will simply lock in the soil's frosty temperature.

If applied too early, that same mulch will retain the soil's lingering fall warmth, extending its influence. This effect can not only skew plants' dormancy process but also attract mice looking for winter shelter.

Winter mulching isn't generally a life-or-death issue for plants well-adapted to central U.S. landscapes. It simply gives those plants an edge by partially leveling out the season's temperature and moisture swings. Besides, it helps protect soil from any compaction and/or erosion caused by

winter rains and snowmelt.

A cold-weather mulch can be vital, however, for plants with shallow or limited roots. "Semi-hardy" plants (such as garden mums, strawberries) belong in this group. Landscape plants that have been in the ground for less than a year belong, too, whether trees, shrubs, perennials or bulbs. Without an insulating layer of mulch, winter's freeze-thaw cycles can heave young plants from the ground, where their roots will die from exposure.

Because of their tender canes, hybrid tea roses need added protection -- an 8- to 10-inch high mound of soil and/or compost to protect their graft. A 4-inch mulch layer goes on top of that when the plants are dormant.

In spring, winter mulch will continue to act as an insulator. So, spring-flowering bulbs may pop up later than usual. Yet, an early warm spell won't inspire plants to break dormancy, leaving them vulnerable for significant damage if the weather turns cold again.

## OPENING

Continued from Page 1A

line to see Santa were Louanne Isernhagen, her daughter, Anne Husted, and grandson, Benjamin Husted. The Husteds are from Littleton, Colo.

There were people carrying their green Treasure Hunt numbers, looking at the numbers posted in participating businesses. Each of the 16 businesses had 22 numbers so, in all, there were over 350 numbers posted. On Monday, Dec. 19, there will be around 300 new numbers posted so people are urged to keep their number if they were not a winner

on Friday night.

The Chamber is giving away three \$100 gifts of scrip money on Dec. 19. At that time, the two winners of the Christmas Lighting contest will each be awarded \$50 in scrip and the coloring contest winners will be announced.

The drawing will be held in conjunction with the Christmas On Us drawing where some lucky person will have an extra \$1,000 in scrip to spend for Christmas. For more information, see the Christmas On Us advertisers on Pages 1, 2, and 3B in this issue.



# Helping those in need



THE SALVATION BUCKET was set up in front of the senior center. Betty Jean Winston, left, dropped some money. One of the Scouts manning the bucket was Kattie Jenik.

Herald staff photo by Nathan Fiala

## TICKET

Continued from Page 1A

ticket number in the Bumper to Bumper ad. The ticket had come from Bier's Hometown. She plans to use the money to either buy groceries or presents.

There are three weeks left of the Christmas On Us excitement and there are still three \$50 scrip prizes left to be claimed. There are also nine prizes unclaimed so be sure and check the numbers on 1B, 2B and 3B of this issue. Also check out the special deals in the participating businesses.

**How it works**

Customers receive a ticket when they purchase \$10 in goods in participating businesses. Individuals can receive one ticket, no purchase necessary, each week at *The Herald* office.

Throughout the Christmas On Us promotion, there are ticket numbers printed in ads on the special Christmas pages. The \$50 give-away numbers are included along with "\*" numbers which are prizes given away by businesses. Winners will have their pictures taken whether they receive \$50 in scrip or a prize in a business.

The business prizes are a bonus for customers as there will be nine additional prizes given throughout

the season.

"Giving prizes in the businesses builds excitement and also gives the business owners another chance to say "thank you for shopping in St. Francis," said Tim Burr, ad manager for *The Herald* and *Times*.

"Check out those numbers! You might be a winner!"

**Winning tickets must be brought in no later than Monday**

"It is important that the numbers be matched by Monday at 5 p.m. because, on Tuesday, new tickets will be drawn and there will be new numbers," said Karen Krien, publisher. "The numbers from the week before will no longer be good to claim a prize."

If a ticket number is unclaimed, a new number will be drawn and it will be added to the next week's numbers on the Christmas On Us pages.

"Each week, participating merchants will be advertising sales and

specials in the ads on the Christmas On Us pages so while you are looking for matching numbers, be sure to take a good look at the specials," Mr. Burr said.

Participating businesses in the Christmas On Us drawings are:

- Bella's Market
- Bier's Hometown Store
- Bumper To Bumper
- Hilltop General Store/Uptown Market
- Republican Valley Auto Supply

- Owens True Value
- Schultz's
- St. Francis Tire and Service
- The Saint Francis Herald
- United Methodist Thrift Store

Be sure to mark the calendar for Dec. 19 for the grand prize drawings held in conjunction with the Chamber of Commerce's activities. The drawing starts at 5:30 p.m. at the grade school in St. Francis.

## Farm Equipment Auction

Saturday, Dec. 3, 2011-10:00CDT  
Location: Stanton County, KS  
3 1/2 Miles N. of Johnson on HWY 27

2-2011 9770 John Deere Combines Tier 3 Engines, Extended Wear Pkg, Extended Auger: 400-500 Hrs.,



Under Warranty-2011 John Deere 9230 4x4 Tractor-Brent Avalanche Grain Cart 1194: 1100 BU-2008 Ford F350 Service Truck 4x4 Crew Cab Diesel with fuel tanks, compressor, pump, and more-Beechcraft Bonanza A36-1975 300HP McCauly 3 Blade Prop.-2 Hopper Bottom Trailers 40' Aluminum with Electric Tarps-Combine Trailer-1983 4850 2WD Tractor-25' Miller Series 1 Disk and More!



Visit the [cannyteam.com](http://cannyteam.com) to view pics and download flyer.

The Canny Team, Assoc. of Swenson Real Estate & Auction Service, 303 S. Main-Johnson, KS 67855 Contact Matt Canny-620-492-3169.

Can't make it to the auction! Bid live online! [www.proxibid.com/CannyTeam](http://www.proxibid.com/CannyTeam) powered by proxibid.

**CANNY TEAM**  
"U Bet, We Can!"  
Matt & Michelle Canny  
(620) 492-3169 or (620) 353-8344  
303 S. Main P.O. Box 461, Johnson, KS  
SWENSON REAL ESTATE & AUCTION SERVICE, INC  
[www.thecannyteam.com](http://www.thecannyteam.com)

## BUSINESS CARD DIRECTORY

To list your business drop us a card!  
Call 785-332-3162 today.



**THE CLASSIC ROSE FLORIST**

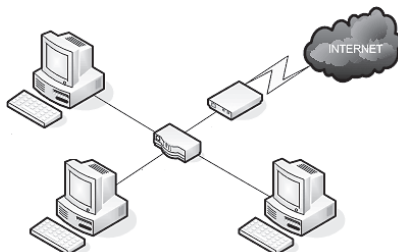
116 W. Washington Street  
Saint Francis, Kansas 67756  
Phone: 785-332-2200  
Toll Free: 855-700-ROSE (7673)

We are here to help with all your floral needs!

[www.TheClassicRose.com](http://www.TheClassicRose.com)  
RoseMary@TheClassicRose.com

Ken Johnson Computer & Network Service

KJCNS  
785-734-0757  
kjens.com  
ken@kjens.com



## The Saint Francis Herald

Tim Burr  
Advertising Manager  
tburr@nwkans.com

310 W. Washington PO Box 1050 St. Francis, KS 67756  
sf.herald@nwkans.com  
785-332-3162  
785-332-3001 (fax)

Natalie Knodel  
Personal Trainer

**nBalance**

122 W. Washington, St. Francis, KS 785-332-0191