

Obituary

Jess Lee Williams
Oct. 23, 1919- Oct. 27, 2011

Jess Lee Williams was born Oct. 23, 1919, in Cheyenne County, Kan. He died Oct. 27, 2011, at the Cheyenne County Hospital in St. Francis.

Jess was the second of five children born to Thomas Orville Williams and Edna Louetta Nester. Jess grew up on a farm southwest of St. Francis. Today this is the site of St. Francis Feeders.

Times were hard when Jess was growing up. He learned a good work ethic and mechanical skills that were with him his entire life.

On July 29, 1944, Jess married Frances Bernice Walter. Three children were born to them; Bonnie, Judy and Tom. Jess and Frances started their life together on the farm, then moved to St. Francis where Jess was employed by Danielson's Hardware.

Later, Jess went to work for Fred Bowers as a mechanic. In 1955, they purchased the business from Fred and changed the name to Jess' Auto Service. They worked side by side doing front-end alignment, brake repair and engine tune-up.

In 1962, they bought the property south of the shop where Jess and Frances built a new home together. They worked at the shop all day and worked evenings building their home.

Jess enjoyed many hobbies including golf, stock car racing and trap shooting. Fishing was his true love. He even built his own fishing boat.

Jess also enjoyed building furniture. When they sold the shop in 1979, Jess spent hours in his garage building furniture

and wood items. Every family member has some item in their home built by Jess.

Preceding him in death were his parents; one brother, Neil C. Williams; two sisters, Lucille Mahaney, and Hollie Bruns; and his wife, Frances, of 67 years who died Sept. 25, 2011.

He is survived by a sister, Hollis Scott of Loveland, Colo.; daughters, Bonnie and husband Gary Cooper, Judy and husband Alvin Hilt, and son Tom Williams; his grandchildren, Rodney Hilt and wife MaryAnn Greg Cooper and wife JaNan Mark Hilt and wife Deb, Kathy Owens, Amanda Bland and husband Ryan, Jeff Williams, Jennifer Cox and husband Kevin, Jessica Quesenberry and husband Chris; great-grandchildren, Noah, Eli and Daniel Hilt, Gavin, Gaten and Garin Cooper, Wyatt and Seth Hilt, Jake and Luke Owens, Ashleigh and Shayleigh Bland, Justin and Sophia Williams, Payton and Hayden Cox, and Jaxon and Alayanna Quesenberry.

Services were held on Oct. 29, 2011, at the United Methodist Church in St. Francis with Reverend Warren Cico officiating. Honorary pallbearers were granddaughters, Kathy Owens, Amanda Bland, Jennifer Cox and Jessica Quesenberry. Casket bearers were Rodney Hilt, Mark Hilt, Greg Cooper, Gavin Cooper, Gaten Cooper and Jake Owens. Burial was in the St. Francis Cemetery.

Arrangements were made by Knodel Funeral Home, St. Francis.



WINDSONG CHORUS quartet Colleen Gardner, Earleen Friedly, Lisa Atkins and Carol Ross are dressed up as elves, singing on the high school stage last Sunday afternoon.

Herald staff photo by Karen Krien.

Eligibility for food assistance program

Cheyenne County supports a food distribution service where free food is available. The Emergency Food Assistance Program is for eligible people and families who meet the household income guidelines.

There will be a commodity distribution of government surplus from 5 to 5:30 p.m., on Thursday, Nov. 10, at the Church of Christ in St. Francis.

The types of food vary and include vegetables, fruits, juices, meat, cereals, peanut butter, nonfat dried milk and pastas.

The food is shipped to the Church of Christ. It is supplied four or more times per year.

To be eligible for commodities, the household's total monthly income must be below:

\$1,180 – household of one.
\$1,594 – household of two.
\$2,008 – household of three.
\$2,422 – household of four.
\$2,836 – household of five.
\$3,663 – household of six.
\$3,663 – household of seven.
\$4,077 – household of eight.

For each additional family member, add \$414.

Parent-teacher meetings on Friday

Parent-teacher meetings are scheduled in both the St. Francis high school and grade school. Because of the meetings, there will be no school on Friday.

Elementary school meetings have already been set by phone and will be held from 8:30 a.m. to 4 p.m.

If you have not talked to either the teacher or office secretary, said Scott Carmichael, principal, please call and we will get you a time to meet with the teacher.

At the junior-senior high school on Friday, parents may

meet with teachers between 8:30 and 11:30 a.m. On Monday, the school will be open to parents to meet with teachers from 5:30 to 7:30 p.m.

"We look forward to this opportunity to talk and work with the parents of our students," said Mr. Carmichael. "In the past, our Monday nights have really worked out well.

"We are hoping that parents will also try to come up on Friday. We look forward to seeing all of you."

BUSINESS CARD DIRECTORY

*To list your business drop us a card!
Call 785-332-3162 today.*



THE CLASSIC ROSE FLORIST

116 W. Washington Street
Saint Francis, Kansas 67756
Phone: 785-332-2200
Toll Free: 855-700-ROSE (7673)

We are here to help with all your floral needs!

www.TheClassicRose.com
RoseMary@TheClassicRose.com

The Saint Francis Herald

Tim Burr
Advertising Manager
tburr@nwkansas.com

310 W. Washington
PO Box 1050
St. Francis, KS 67756

sf.herald@nwkansas.com
785-332-3162
785-332-3001 (fax)

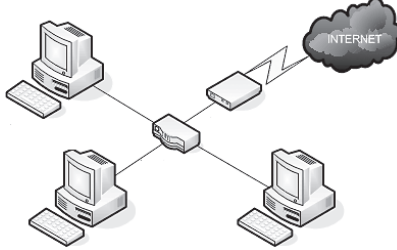
Ken Johnson Computer & Network Service

KJCNS

785-734-0757

kjens.com

ken@kjens.com



122 W. Washington, St. Francis, KS 785-332-0191

Partnering To Bring Medical Specialists To St. Francis

St. Francis Outreach Clinic Schedule

Cheyenne County Hospital
210 W. 1st Street - St. Francis

Cardiology
Dr. Jeffery Curtis
Monthly
Dr. Richard Markiewicz
Monthly
(888) 625-4699

Mobile Mammography
Monthly
(785) 332-2104



HAYSMED

In partnership with Cheyenne County Hospital
haysmed.com

STRESS RELIEF FOR CALVES

Brigade® STRESS FIGHTING Formula

Brigade® Stress Fighting Formula is a CRYSTALYX® Supplement designed to help young calves overcome nutritional stress from weaning and shipping. This palatable, free-choice supplement is fortified with electrolytes, vitamins, minerals and chelated/organic trace minerals-just what stressed calves need at this critical time.

St. Francis Equity

Contact Bob Ochsner at 785-332-2129

www.crystalyx.com

Owned by the farmers and ranchers of this community since 1913

