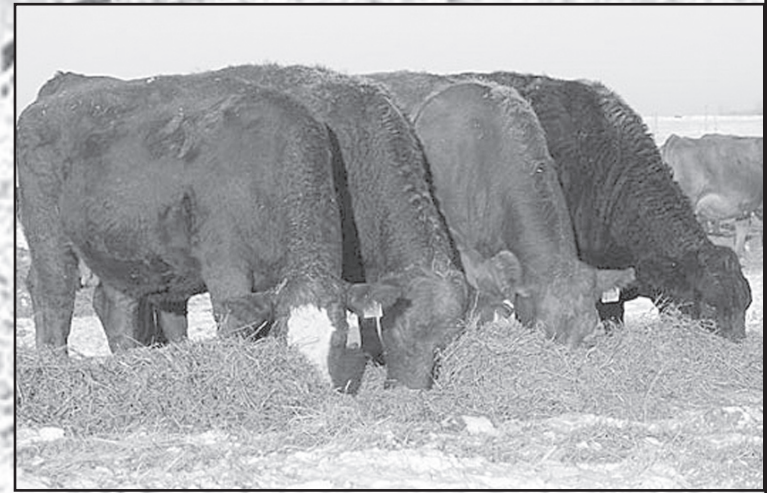


MAY IS BEEF MONTH

Our Beef Producers Are A Great Source Of Pride —



Beef— It's What's for Dinner



The best Mexican Food in town.

Also serving choice beef steaks and sandwiches

Park Hill Restaurant & Lounge
785-332-2255 • Hwy 36 • St. Francis, KS



Hats Off To Our Beef Industry



Kansas ranked 2nd nationally with 6.3 million cattle on ranches and in feedyards as of January 1, 2011. That is a little over twice the states' human population of over 2.818 million.

"Achieving goals by Building Relationships"



WESTERN STATE BANK

FDIC

785-332-3100 www.wsbks.com
P.O. Box 1102 ~ 400 E. Washington ~ St. Francis



THANKS, BEEF PRODUCERS!

Fire up the grill with some great tasting T-Bone steak!



Hometown Market

112 W. Bressler • Bird City, KS • 785-734-2050

Salute To Beef Producers



Proud to serve our patrons delicious beef.

Like us on Facebook for daily specials and updates

Captain Hooks

& Hobo Snack Shack

785-332-5516

Pam & Jim

Salute the Beef Industry



Sainty Liquor

Corner of US Highway 36 & Adams
St. Francis, KS
785-332-3172

Monday - Thursday, 10:30 p.m. - 9 p.m.
Friday & Saturday, 9 a.m. - 11 p.m.

Beef N' Wine,

Beef N' Salad,

Beef N' Spuds.....

DINNER!

A WHOLE NEW ANIMAL IN WHOLE-HOME ENTERTAINMENT

FREE Hopper
WHOLE-HOME HD DVR
With America's Top 200 package or above

PROMOTIONAL PRICES START AT
\$19.99/mo
FOR 12 MONTHS WITH 24-MONTH AGREEMENT

BLOCKBUSTER @HOME
INCLUDED For 3 months

\$5/mo credit for Blockbuster @Home (regularly \$10/mo for one disc at a time) plus \$5/mo credit for core programming package (prices vary).



Video Kingdom SHARE THE EXCITEMENT!
414 W. Washington • St. Francis • 785-332-3207 AUTHORIZED RETAILER

dish



GPDA
Goulds Pumps
Pressure Tanks
Stock Tanks



Constant Pressure
Solar Pumps
Trenching

We are now an authorized Ritchie Waters Dealer



Ross Manufacturing

301 W. Washington ~ St. Francis, KS
785-332-3367 • 785-332-3012 • (cell) 785-332-8560