

# Petition filed in court for probate of will

Published in The Saint Francis Herald, St. Francis, Kansas, February 23, March 1, March 8, 2012. (08, 09, 10)

IN THE DISTRICT COURT OF CHEYENNE COUNTY, KANSAS

In the Matter of the Estate of ROY W. TROUTT, Deceased

A Petition Pursuant to K.S.A. Chapter 59

Case No. 2012-PR-03

## NOTICE TO CREDITORS

THE STATE OF KANSAS TO ALL PERSONS CONCERNED:

You are notified that on February 7, 2012, a Petition for Probate of Will and for Appointment of Personal Representative was filed in this Court by Leo G. Mazon, an heir, devisee and legatee, and personal representative named in the Last Will and Testament of Roy W. Troutt, deceased dated October 27, 2010, requesting the will filed with the petition be admitted to probate and record; petitioner be appointed as personal administrator, without bond; and for petitioner be granted Letters of Administration.

You are required to file your written defenses to the petition on or before March 19, 2012 at 9:00 a.m. in the District Court of Cheyenne County, Kansas, at which time and place the cause will be heard. Should you fail to file your written defenses, judgment and decree will be entered in due course upon the petition.

All creditors are notified to exhibit their demands against the Estate within the latter of four months from the date of first publication of notice under K.S.A. 59-2236 and amendments thereto, or if the identity of the creditor is known or reasonably ascertainable, 30 days after actual notice was given as provided by law, and if their demands are not thus exhibited, they shall be forever barred.

Leo G. Mazon, petitioner

MICHAEL J. DAY, #8523  
KITE & DAY  
112 W. Washington, P.O. Box 575  
St. Francis, KS 67756  
(785) 332-3323  
Attorney for Petitioner



One of the goals of the Association is to develop a community-wide interest in the history of this area. We are attempting to make this history not only relative, but exciting to the readers. History is important to adults and youth of the present generations because it is like a blueprint of many of the

families of today.

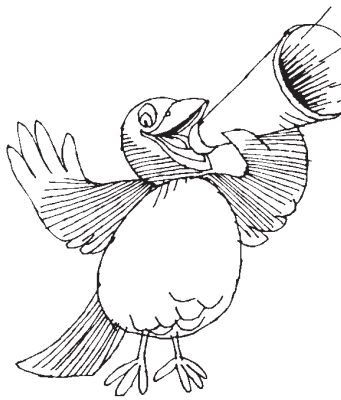
To achieve one aspect of this goal, the Association has developed a historical newsletter for young adult readers that can be adapted to all levels of classroom use by teachers. This is entitled, The Mystery of the Past, issued once a month throughout the school year. Each member of the

Association has chosen a category as follows: Out of the Past, the Craft Corner, The Photo Place, The Mystery Sleuth, Keepsakes, The Map Quest, Poetry of the Land, Book Corner, Pieces of History and Items of Historical Interest. These issues make interesting reading for all – young people as well as adults.

Mr. Bolen has made copies of each issue for all teachers from grade 1 through 12.

For information on the availability of these issues, please contact one of the Bird City Historical Association, Inc. committee:

Dorothy Mast – 734-2750  
Rosemary Powell – 734-2441  
Wanda Dowdy – 734-2383



## Specials

### Sunday

Smothered Chicken Breast

Fresh made burritos

Grab & Go anytime

Don't forget the discount for cash fuel

Money Grams, Tracofones  
Money Orders  
available

Majestic Service & Truck Stop

510 West Highway 36  
St. Francis, Ks.  
785.332.2905

## Business Directory

To list your business, call 785-332-3162.

### The Saint Francis Herald Bird City Times

Advertising Manager

Tim Burr

tburr@nwks.com

Phone 719-761-6238

785-332-3162

PO Box 1050

785-332-3001 (fax)

St. Francis, KS 67756

sf.herald@nwks.com

### Howards Tri State Construction

>Drywall >Painting >Carpentry  
>Roofing >Tile Work >Insulation  
>Garages >Additions >Basements  
New or remodel- We do it all!

Free estimates!

Jason 1-970-630-9051

Travis 1-970-630-5122



### Elmer Kellner Field Representative

U.S. 36 Highway Association, Inc.  
www.us36highway.com

The shortest route between Indianapolis and Denver



1565 US Highway 36

St. Francis, KS 67756-5901

785-332-2950

eldoro1@juno.com

### THE CLASSIC ROSE FLORIST



116 W. Washington Street

Saint Francis, Kansas 67756

Phone: 785-332-2200

Toll Free: 855-700-ROSE (7673)

We are here to help with all your floral needs!

www.TheClassicRose.com

RoseMary@TheClassicRose.com

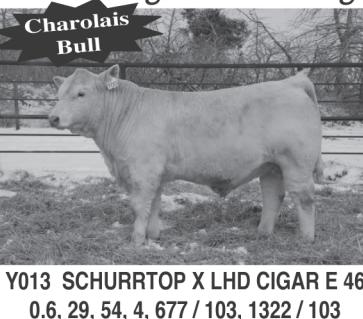
## Raile Charolais/Red Angus

# 23rd Annual Production Sale

Monday, March 19, 2012 • 1:00 p.m. CST

St. Francis Auction Market • St. Francis, KS

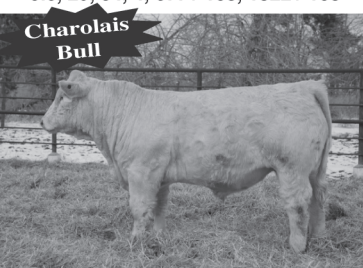
Tri-State areas original source (42 years) of Docile, Top Quality, High Performing Charolais and Red Angus breeding stock!



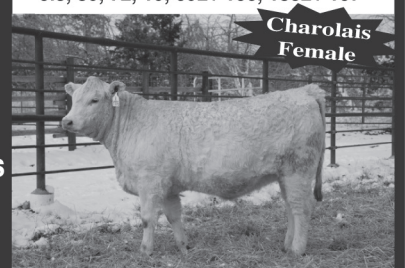
Y013 SCHURRTOP X LHD CIGAR E 46  
0.6, 29, 54, 4, 677 / 103, 1322 / 103



Y107 RAILE 6675 V153 X RAILE RUTH V034  
0.8, 39, 72, 19, 692 / 106, 1352 / 107



Y053 2250 X SUPER CHARILE  
1.4, 24, 42, 16, 669 / 102, 1240 / 97



Y176 FINKS 2250 X RC CIGAR 203  
-2.4, 21, 42, 15, 610 / 106, 1034 / 104

### Selling 78 Bulls:

54 Charolais

17 Red Angus

8 CharolaisXRed

Angus Composites

Also Selling 45

Yearling Females,

25 TOP END

Purebred Charolais

(Deep and Broody)

8 Fancy CharXRed

Angus and CharXAngus

and 12 Commercial

Red Angus

Sale will be broadcast

live on DV Auction.

EPD'S: BIRTH, WW, YW, MILK, ADW / RATIO, ADY / RATIO

## RAILE Charolais

Cliff & Judy Raile • 785-332-2794

Mark Hilt • 303-638-5107

craile@wildblue.net

www.railebeef.com

# New Oncology Clinic Brings Specialized Cancer Services To You



## Dr. January Fields Medical Oncologist/Hematologist

Dr. January Fields, oncologist and hematologist will see and evaluate new patients, manage patients currently receiving treatment and provide follow-up services at a new clinic in Colby.

**Oncology – Dr. January Fields  
Twice Monthly  
Citizens Medical Center  
Specialty Clinic  
100 E. College Drive - Colby**

The cancer program at HaysMed is accredited by the American College of Surgeons Commission on Cancer. Its fellowship-trained cancer specialists provide these state-of-the-art cancer care services:

- Medical oncology
- Radiation oncology
- Hematology
- Breast Care Center
- Cancer prevention, screening and early detection
- Diagnosis, consultation, treatment
- Patient support and education
- Clinical research
- Cancer survivorship services

To schedule an appointment or for more information, consult your primary care physician. Or call 785-623-5774 or Toll Free 1-800-248-0073 and ask for Medical Oncology.



**Dr. Babu Prasad  
Radiation Oncologist**



**Dr. Anne O'Dea  
Medical Oncologist/Hematologist**



**Dr. Sameh G. Abuerreish  
Medical Oncologist/Hematologist**

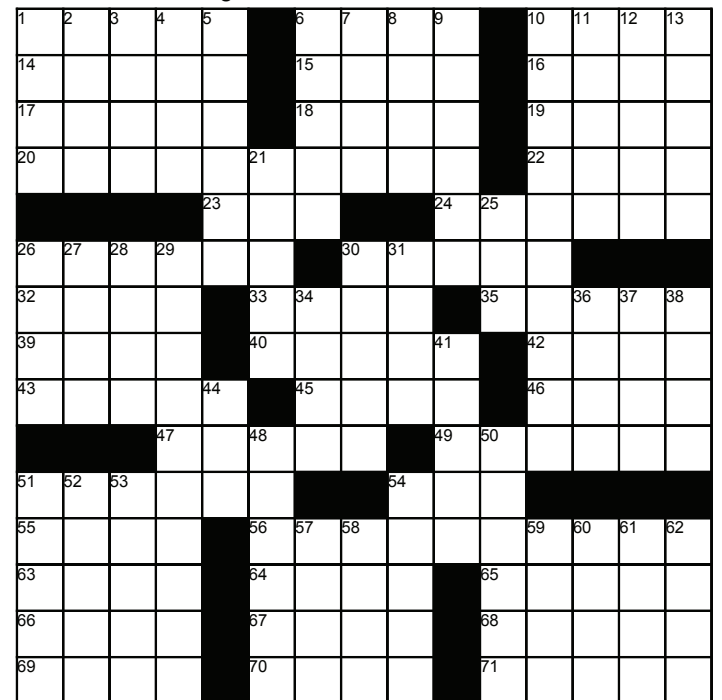


2220 Canterbury Drive – Hays  
785-623-5774  
www.haysmed.com/cancer

## Prehistoric Puzzling

### ACROSS

1. Cries one's eyes out
6. "\_\_\_ boy!"
10. Spill the beans
14. Disney's Little Mermaid
15. Buddy
16. Ancient stringed instrument
17. Where the buffalo roam
18. Colonist loyal to Britain
19. Yard sale caveat
20. Number of red cells, white cells and platelets
22. Pinocchio's protuberance
23. Long-snouted fish
24. Short sock
26. Went for apples
30. \_\_\_ boom
32. Lab gel
33. Sicilian erupter
35. \_\_\_ in (introduce gradually)
39. "So what \_\_\_ is new?"
40. Canines and incisors
42. MBA's subj.
43. Recovery clinic, for short
45. Relaxation
46. Neighbor of Sudan
47. Pie-eyed
49. Magic Johnson's old team
51. Freight train unit
54. Football filler
55. "Your turn," in communications
56. Razzberry
63. Hash house handout
64. Polly, to Tom Sawyer



American Profile Hometown Content

3/4/2012

### DOWN

1. Cutting remark
2. Sea east of the Caspian
3. Skid row denizen
4. Brand of toy blocks
5. Heavy hammer
6. Role player
7. First word of many Commandments
8. Go left or right
9. "The Joy Luck Club" author
10. Total freedom of action
11. Popular disinfectant
12. Respond to reveille
13. Trouble persistently
21. Midshipman's counterpart
25. \_\_\_ and tuck
26. Buddy, Max or Bugs
27. Look at flirtatiously
28. Big party
29. Bit of a cutlet's coating, often
30. Move stealthily
31. Nose bag morsels
34. High schooler, usually
36. Need liniment
37. Fly like an eagle
38. Objectives
41. Spiral
44. Bikini top
48. Elegant in manner
50. Like a frightened cat's back
51. B-52's payload
52. In broad daylight
53. City near Dayton
54. Starts the pot
57. Make a shambles of
58. Not tricked by
59. Angelic topper
60. Historical periods
61. Suffix with major or novel
62. Saxophonist's need

Brought to you by:



# The Saint Francis Herald