

SUMMER IS OVER — winter has arrived, but what happened to autumn! Brad Schneider puts away the bicycle during the snow that fell last Thursday.

Trail ride rescheduled for Sunday

By Karen Krien
karenk@nwkans.com

The weekend was cloudy, cold and mixed with rain and snow so the 19th Cheyenne County Trail Ride was postponed to Sunday. According to the National Weather Service's seven-day report, the highs are to be in the high 60s — good weather for a trail ride.

The time is the same — 2 p.m. sharp at the Roger Samler farm, 18 miles northwest of St. Francis. The ride will last about 2.5 hours. If weather conditions are too cold, rainy or snowy, it will be rescheduled to the following Sunday.

Gary Cooper, one of the coordinators, said this will be a ride with rough terrain but there are no water crossings. New this year after the ride will be a barbecue served from a chuck wagon. Fred Magley owns the chuck wagon and the barbecue is furnished by the 4-H horse club members.

This is the horse club's only money-making project which is used to help buy trophies for the St. Francis show.

Those on the ride will also be able to donate to St. Jude Children's Research Hospital.

"Donations will be accepted for the kids who would like to saddle up but can't," said Sharon Olofson, coordinator.

Signs will be posted at various points. Directions from St. Francis: 13.4 miles north on K-27 to Road W, then 4 miles west to Road 3;

turn west and drive into the yard with a new shop building.

Directions from Haigler include: 8 miles south from the Kansas/Nebraska state line on K-27 to Road W; 4 miles west to Road 3, turn west and drive into

the yard. For more information, contact Mr. Cooper, 785-332-2904; Mrs. Olofson, 785-332-2248, Joe Hoffman, 785-332-2154, Todd Krien, 785-332-3246 or Frank Tracy, 308-423-2646.



OCTOBER BIRTHDAYS celebrated at the Senior Center were Edna Roesener and Darlene Brubaker. Times staff photo by Linda Schneider

2008 DELINQUENT PERSONAL PROPERTY TAXES

Published in The St. Francis Herald, St. Francis, Kansas, and the Bird City Times, Bird City Kansas. Thursdays Oct. 8, 15, and 22, 2009. (41-43) In accordance with 19-547 law general statute 1982 Kansas, the following Personal Property/16/20M Truck tax warrants were returned by the Sheriff of Cheyenne County, KS to my office this Oct 2009. Dolores Jenik, Cheyenne County Treasurer

Name	Address			Total Due
Austin, Kenneth MD	PO Box 729	Goodland	KS	67735 52.97
Fun and Games c/o Moffett, Tony	PO Box 1002	Goodland	KS	67735 118.24
Heritage Corner c/o Miller, Connie	PO Box 429	Bird City	KS	67731 213.22
Johnson Body Shop	1484 US HWY 36	St Francis	KS	67756 56.77
K&M Pipe and Supply Co Inc c/o McAtee, Farrell	320 E First	St Francis	KS	67756 1,235.44
Kimmel, Cossette L	PO Box 266	Bird City	KS	67731 115.66
Mayfield, Gideon	2730 Youce Street	Golden	CO	80401 47.42
Truett, Mary	14905 NE 51st	Vancouver	WA	98682 67.11
Zweygardt, Kelly	PO Box 342	St Francis	KS	67756 288.81
Zweygardt, Kelly	PO Box 342	St Francis	KS	67756 54.90
Zweygardt, Kenji	6459 Buck Creek RD	Oskaloosa	KS	66066 874.97
Zweygardt, Kenji	6459 Buck Creek RD	Oskaloosa	KS	66066 123.21

Business Directory

To list your business, call 785-332-3162.

Jason Howard Construction

Insured, clean, reliable work! Free Estimates on all your construction needs. New Construction, Remodeling and additions. Specialized in drywall hanging, finishing and painting. Also able to do farm painting.

Jason 1-785-332-3152
Cell# 1-970-630-9051
May God Richly bless You!



St. Francis Mercantile Equity Exchange

Janice Irwin Farm Store

1-800-295-2113 Toll Free
785-332-2113 Main Office & Grain
785-332-2421 Station, Bulk Fuels, LP
785-332-2129 Fertilizer, Feed, Chemicals, Seed
308-297-3223 Haigler Branch
785-332-3450 Fax



123 N. River St. • St. Francis, Kansas 67756

St. Francis Mercantile Equity Exchange

Travis Gattshall Agronomy Sales
Cell-785-728-7041
tgattshall@cityofstfrancis.net

1-800-295-2113 Toll Free
785-332-2113 Main Office & Grain
785-332-2421 Station, Bulk Fuels, LP
785-332-2129 Fertilizer, Feed, Chemicals, Seed
308-297-3223 Haigler Branch
785-332-3450 Fax



123 N. River St. • St. Francis, Kansas 67756



Complete Bow Shop & Services
Josh Moberly
1430 Rd. 6 — St. Francis, KS. 67756
785-332-2500 shop or 970-630-1196 cell
Call for business hours & Services
email: MobsArchery@Live.com

Football teams loses game after a big win at home

The Cougars high school varsity football team traveled to Grainfield for the game Oct. 9. Cheylin lost to Wheatland/Grinnell 36-14.

Touchdowns were made by Caleb Keltz who had one touchdown and 5-of-20 passes for 98 yards. Health Antholz added one touchdown and one catch for 39 yards.

Rushing yards: Dalton Magnani had 21 carries for 40 yards, Keltz had six carries for 22 yards and Antholz had five for 18 yards.

Receiving: Magnani had three receptions for 27 yards and Ethan Young one for 32 yards. Passes were intercepted by Jeremiah White, Chris Walden

and Kenan Reeh for a total of three interceptions. Tackles saw Magnani with 15, Walden with 14, Keltz with 12, Max Hengen with 11 and Antholz with 10.

Cheylin 40 Northern Valley 16

The Cougar varsity football team played at home against Northern Valley on Oct. 2 and won 40-16.

Keltz scored a touchdown and had seven of 14 passes completed for 105 yards. Rushing leader was Jared Cahoj with 20 carries for 197 yards. Magnani had 13 carries for 79 yards, Keltz had eight carries for 27 yards, Antholz had four carries for 25 yards and Adam Orten had two carries for 5 yards.



Lady Cougars play well

The Cheylin junior high volleyball team traveled to Brewster last Thursday where they played both the Brewster and Triplains volleyball teams. Cheylin beat out the Bulldogs 25-19, 25-11 to win the first match of the afternoon.

The Cheylin teams' serving percentage was 91 percent in the Brewster match, stats confirmed that Shayla Hubbard and Susannah Jones led the team in passes.

Hubbard had the most sets during this match setting eight for eight and played the net.

The team talked much better to each other during the game and the sets just played out in Cheylin's favor.

Jones with eight for 10 serves and Allie Frisbie five for six, highlight this match both leading the team in successful hits.

B-team

The B-team played Brewster first. They started out strong and showing improvement at the serving line and with their passing game.

The girls won the first set 25-17, lost their second set 21-25, and had a disappointing third set losing to Brewster 14-16.

Elizabeth Keltz served in 13 of the 24 points in the first set and again in the third set added half of the team's points to the board, 7 to 14.

"We have seen so much improvement in these young ladies and although we did not take home

a win, and as equally as we were matched with this Brewster team, our girls played hard!" said Coach Tammi Carmichael.

A-team

The last match of the day was Cheylin's A-team, junior high varsity taking on Triplains.

The girls won both sets 25-20 and 25-16. The team hit the floor talking, passing up the serves, and exhibiting to their fans just what they are capable of doing as a team.

With the two wins added, the

A-team record stands at 5-3. These young ladies will have a week off this week which will give them some rest and the opportunity to prepare themselves to take on the Sharon Springs Wildcats on Friday at Sharon Springs.

"So many times we do not communicate on the floor throughout our matches, we have been slow to start up the first set and show aggression, but not today," said Coach Carmichael.

Children's theatre to perform live musical

The Wichita Children's Theatre Professional Touring Company will present a live musical adaptation of the Brothers Grimm story, "Little Red Riding Hood" on Tuesday and Wednesday, Oct. 20 and Oct. 21. They will perform at five different elementary schools: Tuesday, 8:30 a.m., Oberlin Grade School, 10:30 a.m. Atwood Elementary School, and 2 p.m. Colby Elementary School. The Wednesday performances will be 9:30 a.m. at the Oakley Elementary School, and 2 p.m. mountain time, at Goodland Elementary School.

This delightful retelling of the Brothers Grimm story introduces those attending to the endearing,

yet capricious Little Red, her understanding mother, her doting, yet wise grandmother, the brave and kindly woodsman, and the silly, bumbling wolf who is more interested in Little Red's basket of goodies than he is in Little Red. This show, written by Kevin Reese, will educate as well as entertain the audience. These performances are made possible by Western Plains Arts Association, with additional funding from the Kansas Arts Commission, a regional affiliate of the National Endowment for the Arts. Western Plains Arts Association ticket holders are welcome to these performances.

160 ACRES CHEYENNE CO., KS CROPLAND

"MULTI-PARCEL" ABSOLUTE AUCTION

TUESDAY, OCT. 20, 2009 @10:30 AM, CDT
AUCTION LOCATION: LEGION HALL, BIRD CITY, KS

SELLER:
Waters Grandview Farms, LLC.

LEGAL DESCRIPTIONS:
TRACT 1: N/2SW/4 OF 34-4-38
TRACT 2: E/2NW/4 OF 34-4-38

MANNER OF SALE: This real estate will be offered as a "Multi-Parcel" auction in 2 individual tracts and in combinations of tracts. Auction procedure and increments of bidding are at the discretion of the auction company.

TERMS: 10% down day of sale, with the balance to be paid on or before November 20, 2009. **Announcements made day of sale take precedence over printed material and previously made oral statements.**

MINERAL RIGHTS: All of the Seller's interest will transfer to the Buyer(s) at closing.

CROPS: There are no growing crops. Stubble has been sprayed at Seller's expense.

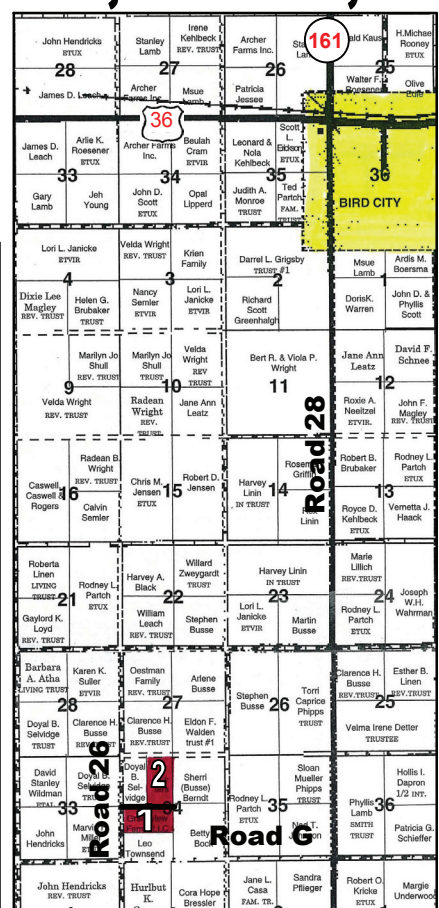
FSA PAYMENTS: Buyer(s) will receive the 100% of all FSA payments associated with 2010 crop year.

Seller will retain the landlord's share of all FSA payments associated with the 2009 crop year.

CLOSING: Date of closing will be on or before November 20, 2009.

POSSESSION: Date of closing.

AGENCY: Farm & Ranch Realty, Inc., its agents and representatives, are the Exclusive Agents of the Seller.



TRACT	TOTAL ACRES	CROP LAND ACRES	WHEAT BASE/DCP YLD	GRAIN SORGHUM BASE/DCP YLD	2008 TAXES
1	80.0	79.4	31.80/33	21.95/44	Taxes are combined-
2	80.0	79.4	31.80/33	21.95/44	\$428.24
	160.0	158.8			

FARM & RANCH REALTY, INC.

RON EVANS, AGENT (785-443-2416)
P.O. Box 947 • 1420 W. 4th • Colby, KS 67701
(785) 462-3904 OR (800) 247-7863

Donald L. Hazlett, Broker/Auctioneer
www.farmandranchrealty.com
"When you list with Farm & Ranch, it's as good as SOLD!"