



THE JUDGE checks out Gaten Cooper's rocking horse wood project.

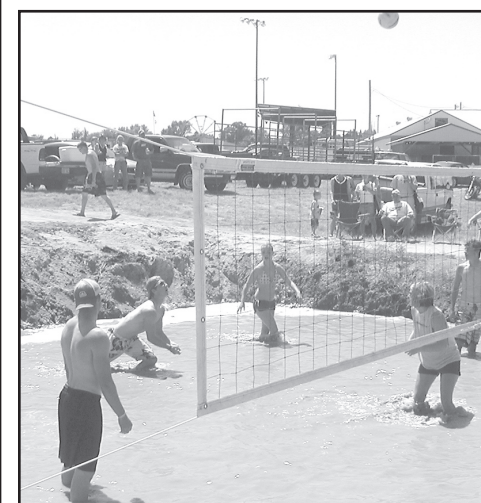


Hilltop General Store

U.S. 36 & Benton • St. Francis • 785-332-2277

Uptown Meat Market & Deli

413 W. Washington • St. Francis • 785-332-2277



Congratulations to the many citizens of Cheyenne County that helped to make the 2009 Cheyenne County Fair great!!

KNODEL FUNERAL HOME

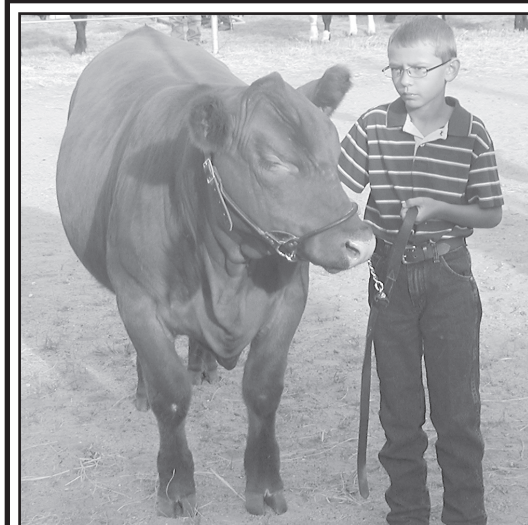
202 S. Benton • St. Francis 785-332-3131

Clip & Send

Comments Or Suggestions

The Cheyenne County Fair Board would like to hear your comments or suggestions on what you would like changed or perhaps done differently during the fair. Please write on the form below and send it to: Cheyenne County Fair Board, P.O. Box 178, St. Francis, Ks. 67756.

Form with multiple horizontal lines for writing comments or suggestions.



We're proud to be a part of a community that pulls together to create a Fair and Parade like Cheyenne County.

Dr. Melvin and Barb Dunn

785-332-2062
300 N. College • St. Francis

Congratulations on a great Derby!!



Neitzel Insurance Service

208 W. Washington • St. Francis • 785-332-2111