

Trucker event benefits local Special Olympians

Motocyclists have bike rides for charity and runners have races, but for the longest time, truckers have not had a charity event to call their own. However, now, the wait is over for Colby-area truckers as the 2007 World's Largest Truck Convoy rolls into town on Sept. 15.

This unique event will begin and end at Truck Town, 105 W. Horton Ave., Colby. Registration begins at 10 a.m. and the convoy rolls down the highway at 11 a.m. All proceeds benefit the athletes of Special Olympics Kansas.

In an attempt to maintain Guinness Book of World Record status, truckers from the Colby area will join forces with other truckers throughout the nation to hold the World's Largest Truck Convoy. While this event has been held in cities around the nation for multiple years, it is only through the devotion

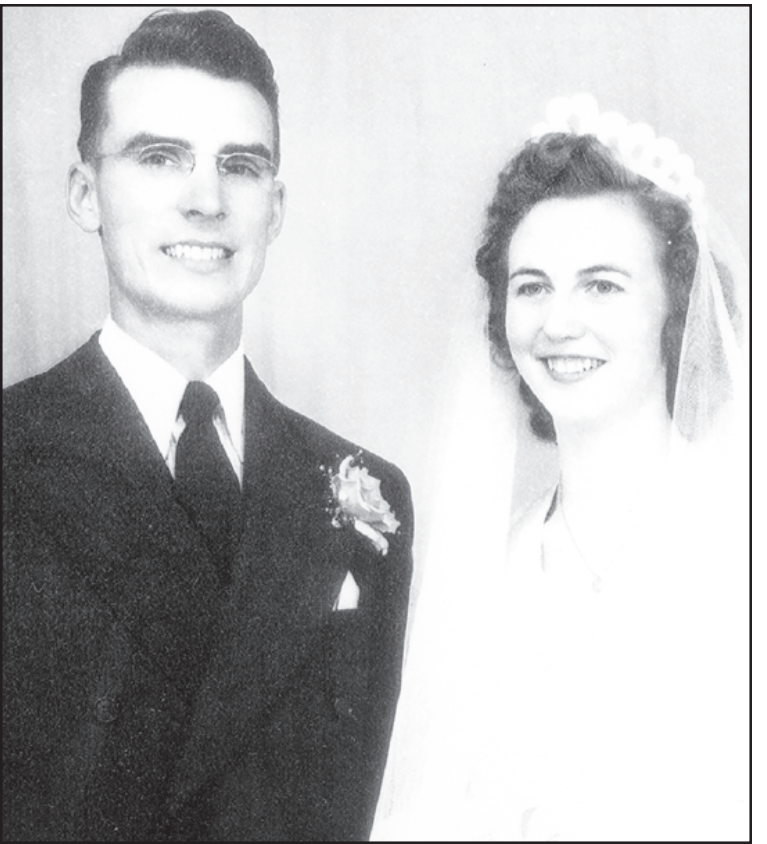
of Joe and Jane Mentlick, two Special Olympics volunteers, that the convoy is rolling through Colby.

Truckers and trucking companies are encouraged to register now for this worthwhile event! The registration fee is \$100 per truck, which includes participation in the convoy, goodie bag, lunch and entertainment. To participate, vehicles must be of 10-gross vehicle weight or larger, drivers must sign a waiver of liability and show a valid drivers license and proof of insurance.

All proceeds from the World's Largest Truck Convoy will support Special Olympics programming through such items as medals, meals, competition venues and sporting equipment. For more information and to register, visit www.kansastorchrun.org or call Joe Mentlick at 785-443-1682 or Jane Mentlick at 785-460-2818.



AUGUST BIRTHDAYS celebrated at the Bird City Senior Center on Monday were: (l to r) Lucille Wright, Bill Leach, Val Coleman, Treva Henry, Larry Henry and Elvera Neitzel. Times staff photo by Karen Krien



Mr. and Mrs. Canniff

Couple to celebrate 60th anniversary

Calvin and Frances (Fredrickson) Canniff will be celebrating their 60th wedding anniversary on Aug. 28. Their daughters, Rita Herrington and Ruth McCabe are asking family and friends to join the celebration by sending cards to the couple at their home, 435 West 2nd, Junction City, KS 66441.

The Canniffs taught in the public schools, having been in Bird City from 1957 to 1960, and in St. Francis from 1961 to 1971. They then moved to Junction City and have

called it "home" for the past 36 years.

They were married on Aug. 28, 1947, at the First Christian Church in St. Francis.



Ag Talk with Jeanne

Wheat Production: Balancing Risks with Varieties
By Jeanne Falk,
K-State Multi-County Agronomist

Don't put all of your eggs in one basket.

This is one philosophy for managing risk. This is the same for managing risks with wheat production. Most producers plant two or three varieties to help manage environmental risks that affect wheat yield.

According to Bob Klein, cropping systems specialist at University of Nebraska, because there is no single perfect wheat variety for all production systems or in all years, using complementary varieties will enable you to realize the greatest benefit from a specific variety's strengths and offset, to a high degree, its potential weaknesses. This compensation improves the opportunity for yield stability and profitability of your entire wheat production system. The number of complementary varieties that are grown as part of a wheat farming enterprise and the acres planted to each variety will depend entirely on specific production conditions and any special needs (common diseases or insects, etc.).

There are four steps in developing and updating your wheat farm's variety complementation strategy:

1) Identify your workhorse varieties. These are the varieties you now grow on a majority of your wheat acres because they have a reliable and proven record of perfor-

mance over several years in your preferred production management system.

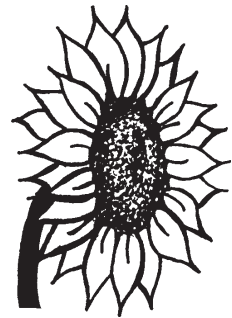
2) Complement your production needs and limits. Select a variety or varieties that have characteristics needed for specific production practices (e.g., straw strength or height) and typical soil conditions. Choose varieties that offer the best level of protection from expected diseases and other yield limiting factors common to your growing conditions or area.

3) Complement with a range in maturity. Because you can never be sure about the weather during that critical time or year, select varieties that will mature earlier (or later or some of both) than your workhorse variety. A spread of maturities also will allow you to stagger your harvest schedule and take maximum advantage of your available equipment, plus reduce losses to yield (e.g., from shattering) and end-use quality (e.g., from weathering).

4) Complement with different genetic families. Varieties with closely related genetic backgrounds often can be susceptible to the same diseases and production stresses. You can lower those risks by selecting varieties that share 50 percent or

less common parentage with your workhorse variety and each other. Varieties with similar backgrounds often can be susceptible to the same disease, insects and production risks.

Finally, look at the performance tests location from K-State Research and Extension. These yields are available in the Wheat Book that is available at the Extension office. There is also a section of this book that discusses the resistance of popular varieties to certain diseases



and insects. If you have any questions, please contact the Extension office for more information.

Club Clip

Go Getters 4-H Club

The Go-Getters 4-H Club had their July meeting on the 24th after the fair clean-up.

The meeting was called to order by President Aryn Sturgeon. Secretary Isaac Sturgeon took roll call. Eleven members answered to "What is your favorite project, you are taking to the fair." There were also seven parents and three guests present.

Secretary Isaac Sturgeon read the minutes from the previous meeting and they were accepted.

Treasurer Craig Busse gave the treasurer's report.

Everyone was given a t-shirt to wear at the fair.

The club tour was decided to be Wednesday night at the fair.

Song leader Racheal Keltz led the club in the song, "Down By The Banks of the Hanky Panky."

The meeting was adjourned and the club enjoyed a barbecue.

Recreation leader Josh Keltz led the club in a game of tag.
Reporter, Isaac Sturgeon

WANTED Bird City Times Associate-Editor

Looking for an energetic person, living in the Bird City area. The applicant must have some computer, writing and some photography skills, get along well with customers, be able to cover meetings, school activities and other happenings within the communities of Bird City and McDonald.

To apply or for more information, contact Casey McCormick or Karen Krien at the St. Francis Herald, 785-332-3162 or stop by the office at 310 W. Washington, St. Francis.

Published in The Saint Francis Herald, St. Francis, Kansas and the Bird City Times, Bird City, Kansas, Thursday, August 16, 2007 (33)
State of Kansas
City/County
2008

Notice of Budget Hearing

The governing body of **CHEYENNE COUNTY, KANSAS** will meet on the **31st** day of **August**, 2007 at **9:00 A.M.**, at the **County Courthouse** for the purpose of hearing and answering objections of taxpayers relating to the proposed use of all funds and the amount of ad valorem tax. Detailed budget information is available at the **COUNTY CLERK'S OFFICE** and will be available at this hearing.

Budget Summary

Proposed Budget 2008 Expenditures and Amount of 2007 Ad Valorem Tax establish the maximum limits of the 2008 budget. Estimated Tax Rate* is subject to change depending the final assessed valuation.

Fund	2006		2007		PROPOSED BUDGET 2008		
	Prior Year Actual Expenditures	Actual Tax Rate*	Current Year Estimate of Expenditures	Actual Tax Rate*	Expenditures	Amount of 2007 Ad Valorem Tax	Est. Tax Rate*
General	1,682,852	26.245	1,664,674	21.862	1,942,795	1,210,621	31.010
Road and Bridge	829,453	11.293	978,200	16.221	914,850	362,674	9.290
Bridge Building	71,958	0.840	15,987	0.057	85,000	84,820	2.173
Noxious Weed	35,109	0.556	37,100	0.665	34,500	16,552	0.424
Bond and Interest	303,880	5.569	307,500	5.353	27,308	0	0.000
Hospital	527,582	5.625	525,000	6.560	525,000	223,109	5.715
Prairie Dog	13,262		11,500		10,722		
Special Parks & Recreation	700		1,100		3,408		
Special Alcohol	3,110		1,000		4,896		
Health Grants	27,650		20,000		43,712		
Special Machinery	176,071						
Noxious Weed Capital Outlay	0						
Spec Ambulance Cap Outlay	0						
Equipment Reserve	37,156						
Multi-Year Capital Improvement	0						
Motor Vehicle Fund	20,934		27,415		31,254		
Totals	3,729,717	50.128	3,589,476	50.718	3,623,445	1,897,778	48.612
Less: Transfers	249,744		214,500		214,308		
Net Expenditures	3,479,973		3,374,976		3,409,137		
Total Tax Levied	1,398,097		2,204,149				
Assessed Valuation	40,501,431		43,460,833		39,039,310		
Outstanding Indebtedness, January 1							
	2005		2006		2007		
GO Bonds	925,200		636,000		336,800		
Lease-Purchase	0		0		0		
Total	925,200		636,000		336,800		
Fire Districts:							
No. 1 - General	51,310	1.172	33,400	1.164	38,000	24,123	0.823
No. 1 - Equip Reserve	0						
No. 1 - Special Equip	0						

*Tax Rates are expressed in mills.

Terry Miller
Clerk

Business Directory

To list your business, call 785-332-3162.



Bison

Rx compounding & Therapy
James E. Hampton, RPh, PCCA Member
416 State Street, Suite A
Atwood, Kansas 67730
(785) 626-3237 • (800) 696-3214
Bison Rxcompounding@atwoodtv.net

Customized prescriptions for patients with unique medical situations requiring unique medical solutions.

Residential & Commercial ROOFING

Local DURO-LAST Contractor

Murray Roofing

740 E. 4th
Colby, KS 67701
785-462-6908
800-794-3204



FREE ESTIMATES

Jeff Dreiling/Sales

FLANDERS GUTTERING

"A better way to go"

- 5 inch seamless guttering • Roofing
- Windows • Soffit and Fascia

FREE ESTIMATES

SPECIALIZING IN:

CALL FOR SPRING SPECIALS!

785-694-2865 or 785-462-0632

WESTERN KANSAS CENTER FOR COMPREHENSIVE DENTAL DIAGNOSIS & REHABILITATION

460-3999 or toll free 1-866-305-3999

Jeffrey M. Rayl, D.D.S.
1690 W. 4th • Colby, KS