

# Seed company has new manager

By Karen Krien

St. Francis man, Derrick Tice, has taken the position of district sales manager for Producers Hybrids.

The company, a division of Ag Reliant Genetics, is a mid-west seed company, specializing in corn, soybeans, grain sorghum, forages, alfalfa and sunflowers. The main office is located in Battle Creek, Neb.

Mr. Tice joins a force of 31 district sales managers in a seven-state sales area. He will be managing his sales district of eastern Colorado and northwest Kansas.

"It is an exciting time in the seed business with the new technologies that are available for the agricultural community, as well as the opportunities opened up by ethanol demands," Mr. Tice said.

He began on April 16. He has been establishing corn test plots in the area as well as meeting local farmers.

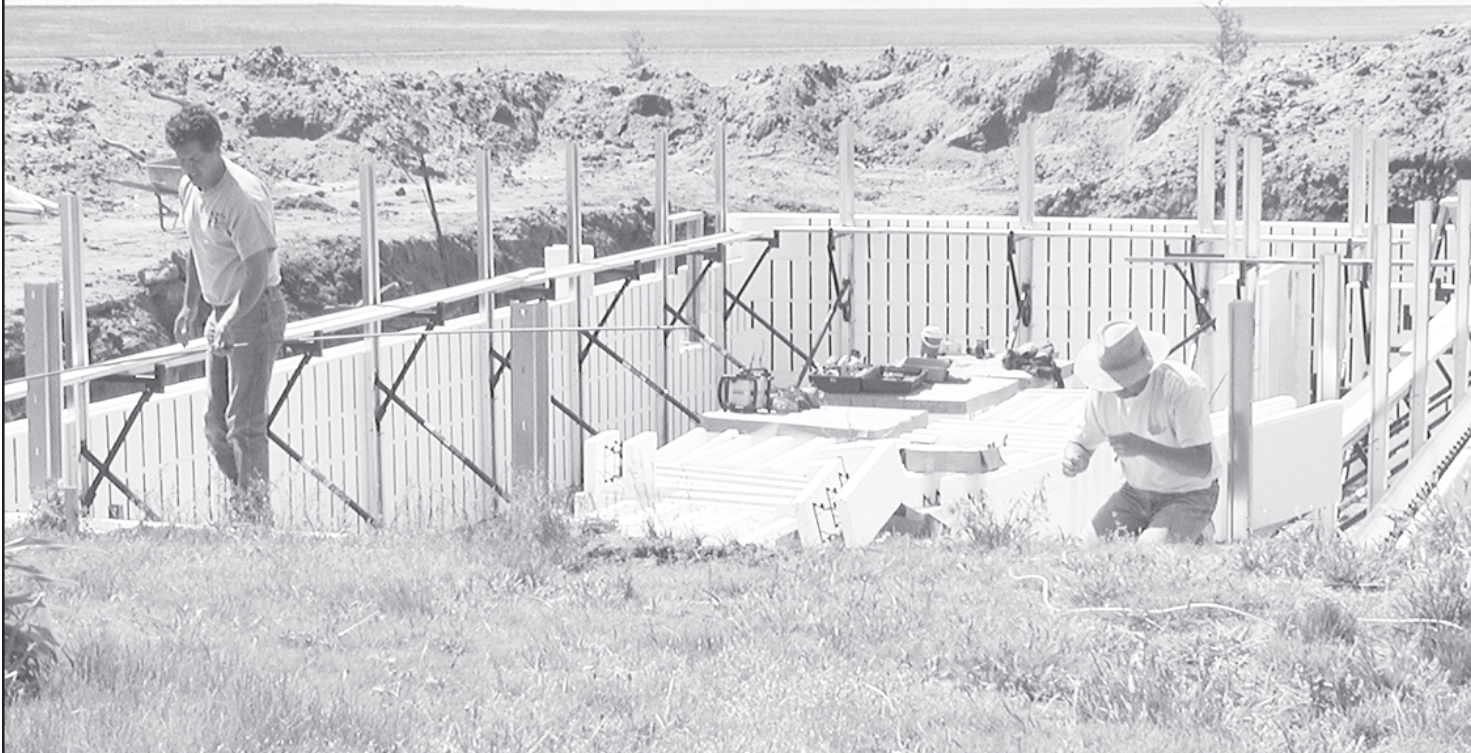
Prior to joining the company, Mr.



Tice

Tice was a sales representative for Yost Farm Supply in St. Francis.

He received his education at Fort Hays State University. He and his wife, Heidi, and children, Madi, 7-years-old, and Kobe, 4-years-old, live in St. Francis.



REBUILDING BEGINS at the Ketzner farm. Nick Ketzner and Roy Shrader are putting the styrofoam forms and getting ready to pour concrete.

Times staff photo by Melinda Basnett

## Roles of similar organizations are discussed

By Karen Krien

karenk@nwkans.com

The roles of two similar organizations, the Cheyenne Initiatives Association and the Cheyenne County Development Corporation, were discussed at a board meeting held May 17 in Bird City.

Those attending agreed that the current objectives are to:

- Come along side and assist existing businesses to promote economic development.
- Assist current residents of the county to start their business.
- Recruit new businesses and people to the county.

The Development Corporation is on board with the mission of the Association with manpower and resources to work together. The Corporation will be focusing on budget development to present budget requests to the commissioners and city councils.

They decided that the three main goals of the Development Corporation are to continue with the BREES for St. Francis; create an updated DVD of the county for business and resident recruitment; and to update the county strategic plan.

The question was asked if the Bird City Century II could provide funding assistance to the Development Corporation. Cathy Domsch, coordinator, said she would bring the matter up for discussion at the next board meeting but felt that Century II is supporting the Corporation and county economic development by the work and projects that are taking place in Bird City, even though the foundation is not monetarily supporting. Other projects which could be worked on together could include the DVD, strategies plan, grant writing and marketing.

It was the consensus that the Association is a support system for the Development Corporation. The Association has a two-year plan, after that, they may or may not continue to exist. It was suggested that the Association plan to exist after the two years, especially for the purposes of networking county leaders, meeting at least one time per month to update leaders of meetings that they have been attending and to keep everyone abreast of new or ongoing projects in the county.

Roger Jensen, St. Francis City Council member, made sure that the Development Corporation knew that there were funds available for advertising through the transient tax at the city.

### Vision/mission statements

Tom Keller, chairman, presented the following vision and mission statements for the Association.

Vision statement: Networking Cheyenne County residents with themselves and the world.

Mission statement: Facilitating communication and promoting the most effective and efficient use of all the county's commonwealth resources.

The county's commonwealth resources include but are not limited to: renewable energy, foodshed, education, entrepreneurship, sense of place, leisure and recreation,

health, charitable giving, soil and mineral cycle, wildlife and natural world, water cycle, history, arts, spirituality and political power

Both statements were accepted.

### Next meetings

The next meeting has been set for 7:30 p.m. on Thursday, June 14, at First National Bank in St. Francis.

Mr. Keller reported he received an e-mail from Darryl Birkenfeld, OC Coordinator. The next cluster session will focus on leadership training and will be held from 5 to 9 p.m. on June 11, Burlington.

Members present at the May 17 meeting were: Dan Carson, Susan Dinkel, Rick Reeser, Kari Milliken, David Butler, Kim Zweygardt, Tom Keller, Scott Schultz, Lyle Knebel, Norman Morrow, Ernie Ketzner, Cathy Domsch and Roger Jensen.

## Substantial Success is waiting for you at Friends University



The College of Adult and Professional Studies (CAPS) offers a variety of degrees and majors with schedules formatted to fit **YOUR** busy life.

**CALL TODAY**  
**1-800-715-9438**

- Classes are held at the community college
- Classes taught by professionals

**FRIENDS UNIVERSITY**

Visit us at [www.go2friends.com](http://www.go2friends.com)

2100 W. University Ave.  
Wichita, KS 67213

Friends University is accredited by The Higher Learning Commission and is a member of the North Central Association, telephone: 1-312-263-0456, [www.ncahigherlearningcommission.org](http://www.ncahigherlearningcommission.org).

## Useless Facts

• The name Jeep came from the abbreviation used in the army for the "General Purpose" vehicle, G.P.

• No NFL team which plays its home games in a domed stadium has never won a Superbowl.

• The only two days of the year in which there are no professional sports events (MLB, NBA, NHL, or NFL) are the day before and the day after the Major League all-stars Game.

• Only one person in two billion will live to be 116 or older.

• The name Wendy was made up for the book "Peter Pan."

• The Pentagon, in Arlington,

Virginia, has twice as many bathrooms as is CURRENTLY necessary. Because, when it was built in the 1940s, the state of Virginia still had segregation laws requiring separate toilet facilities for blacks and whites.

## COMPARE OUR CD RATES.

Bank issued, FDIC-insured to \$100,000

Term	APY*	Minimum deposit
1-year	5.15% APY*	\$5,000
3-year	5.10% APY*	\$5,000
5-year	5.15% APY*	\$5,000

\*Annual Percentage Yield (APY), effective 5/30/07. Certificates of Deposit (CDs) are federally insured up to \$100,000 (principal and interest accrued but not yet paid) per issuing institution. CDs are also federally insured up to \$250,000 (principal and interest accrued but not yet paid) in qualified retirement accounts per issuing institution. Subject to availability and price change. CD values may decline in a rising interest rate environment, and the market value may fluctuate if sold prior to maturity. The amount received from the sale of a CD at current market value may be more than, less than or equal to the amount initially invested. FDIC insurance does not cover losses in market value in these instances. Early withdrawal may not be permitted. Yields quoted are net of all commissions. You pay no additional commissions, annual fees or periodic charges. The estate feature allows heirs to redeem the CDs upon the death of an owner at face value plus interest earned, subject to limitations. CDs require the distribution of interest and do not allow interest to compound. CDs offered through Edward Jones are issued by banks and thrifts nationwide. \$5,000 minimum investment per issuing institution. All CDs sold by Edward Jones are registered with the Depository Trust Corp. (DTC).

Call or stop by today.

**Kris Yost**  
Financial Advisor

114 East 11th  
P.O. Box 647  
Goodland, KS 67735  
Ofc. 785-899-3611  
800-755-4596  
kris.yost@edwardjones.com

[www.edwardjones.com](http://www.edwardjones.com)

**Edward Jones**

MAKING SENSE OF INVESTING

## Public Notice

# Sale of real estate on execution is set

Published in The Saint Francis Herald, St. Francis, Kansas, Thursdays, May 24, May 31 and June 7, 2007.

IN THE DISTRICT COURT OF CHEYENNE COUNTY, KANSAS KIMBERLY PSALTIS,

as an individual and as Special Administrator of the Estate of Eloyce A. Pettijohn, deceased, Plaintiff,

vs. Case No. 06-CV-10 JIM MELTON AND TONYA MCLINN, Defendants.

A PROCEEDING PURSUANT TO K.S.A. CHAPTER 60

**NOTICE OF SALE OF REAL ESTATE ON EXECUTION**

Notice is hereby given that under and by virtue of an Order of Sale issued by the Clerk of the District Court of Cheyenne County, Kansas, in a certain action in said Court numbered 06-CV-10, wherein the parties above named were respec-

tively plaintiff and defendants, and to me, the undersigned, Sheriff of said County, directed. I will offer for sale at public auction, and sell to the highest bidder for cash in hand, at the front door of the Court house in the city of St. Francis, Kansas, on the 15<sup>th</sup> day of June, 2007, at 10:00 A.M. time, the following described real estate, situated in the County of Cheyenne and State of Kansas, to-wit:

Lots Eight (8), Nine (9), Ten (10), Eleven (11), Twelve (12), Thirteen (13), Fourteen (14), Fifteen (15), Sixteen (16), Seventeen (17), Eighteen (18), Nineteen (19), Twenty (20), Twenty-one (21) and Twenty-two (22), Block Three (3) in original Town of Wheeler, according to the recorded plat thereof.

/s/ Troy Gardner  
Sheriff of Cheyenne County,  
Kansas.

# Kansas Classified Ad Network

### Adoption

Adoption: We promise your newborn a loving, secure and happy home. Full time Mom, devoted Dad. Expenses paid. Please call Theresa or John: 1-800-484-6765 PIN #0369.

### Auctions

Internal Revenue Service Judicial Sale. June 20th, 8 parcels of western Kansas farm land totaling 1,600 acres. Go to [www.irsauctions.gov](http://www.irsauctions.gov) for information and pictures.

**Business Opportunity**  
ALL CASH CANDY ROUTE. Do you earn \$800 in a day? Your own local candy route. Includes 30 Machines and Candy. All for \$9995. 1-888-753-3441.

### Educational

MISSOURI WELDING INSTITUTE, INC. Nevada, Missouri. Become a Certified Pipe and Structural Welder. Earn top pay in 18 weeks. Many companies seek our graduates. 1-800-667-5885.

### Employment Opportunity

Earn Up To \$550 Weekly. Helping the Government PT, No experience needed. Call Today! 1-800-488-2921. Ask for Department M. \$87 investment required.

### For Sale

\$500 Police Impounds! Cars from \$500! Tax Repos, US Marshal and IRS sales! Cars, Trucks, SUVs, Toyotas, Hondas, Chevys, more! For Listings, Call 1-800-298-4150 x1026.

**BANK FORECLOSURES!** Homes for \$10,000! 1-3 bedroom available! HUD, Repos, REO, etc. These homes must sell! For Listings Call 1-800-425-1620 ext. 3425. Destin. Edgewater Beach Condos. Gulf-front 1-3 Brs. Free fitness center, beach, set-up and wireless internet. Two pools, spa. Ask for Spring Special! 800-822-4929. [www.edgewaterbeach.com](http://www.edgewaterbeach.com).

### Help Wanted

California Bound. Full time travel.

Represent today's hottest publications. Hotel & transportation provided. Casual atmosphere. Must be 18 or older. Start Today! Call 866-350-2220.

DEFEND FREEDOM \$15,000 Prior Service Bonus. Up To \$20,000 Non-Prior Service Bonus. Join Our Team! Kansas Army National Guard 1-800-464-8273. [www.kansasarmynationalguard.com](http://www.kansasarmynationalguard.com). Get Crane Trained! Crane/Heavy Equip. Training. National Certification Prep. Placement Assistance - Financial Assistance. \$12-\$55/hr Starting Pay. Oklahoma College of Construction. [www.OK-CC.com](http://www.OK-CC.com). 1-866-726-0577.

Immediate Openings - Heavy Equipment/Diesel Mechanic; Operator. Excellent pay, benefits. Resume to PO Box 218, Goddard, KS 67052, or call Bob, 316-794-8898. Nowak Construction. EOE. Wanted: Distributor, Dealer, person wanting business expansion op-

portunity selling affordable compact diesel tractors 20-40 HP, "convertible" zeroturn mowers. Introductory pricing, warranties, financing, 1-800-284-7066 for territories/information.

**Help Wanted/Truck Driver**  
CDL-A DRIVERS: Expanding Fleet offering Regional/OTR runs. Outstanding Pay Package. Excellent Benefits. Generous Hometime. Lease Purchase on '07 Peterbilts. NATIONAL CARRIERS 1-888-707-7729 [www.nationalcarriers.com](http://www.nationalcarriers.com). Class A Drivers. You've got the drive. We've got the direction. Prepass Ez-pass. Every 60K miles raises. 2006 and newer equipment. 100% NO touch. 1-800-528-7825. Drivers - Flatbed Drivers Needed. Average \$1,001/wk Gross. Home Often. 379 Long Nose Petes. \$1,000 Sign-On Bonus. 866-290-1568 [www.apassmore.com](http://www.apassmore.com). Drivers...Get Movin'! 36-43 cpm/

\$1.20 pm. Sign on bonus. \$0 Lease New Trucks. CDL-A + 3 mos OTR. 800-635-8669.

### Land for Sale

Build a New Home with 100% Financing. Earn Thousands in equity the day you move in! No payments while building! [www.iheonline.com](http://www.iheonline.com). 877-386-3989 x 510.

### Legal Services

Social Security disability claims; Saunders & Saunders Attorneys at Law. No recovery, No fee! 1-800-259-8548.

### Misc.

AIRLINES ARE HIRING - Train for high paying Aviation Maintenance Career. FAA approved program. Financial aid if qualified - Job placement assistance. Aviation Institute of Maintenance (888) 349-5387.

### Special Events

Beef Empire Days, the High Plains original celebration of the beef and cattle feeding industries! Join us in

Garden City May 30 - June 10. For information contact us at (620) 275-6807, [www.beefempiredays.com](http://www.beefempiredays.com) or by email at [beefempiredays@gnet.com](mailto:beefempiredays@gnet.com).

### Steel Buildings For Sale

20x8x8; 40x8x8; 48x8.5x9.5 SHIPPING CONTAINERS. Camlock doors, hardwood floors support fork-lift. Delivery available. 1-785-655-9430 Solomon; 620-277-2367 Garden City. [www.chuckhenry.com](http://www.chuckhenry.com) complete web listing, photos, specs, pricing. ALL STEEL! Clear Span & Truss buildings. Excellent value and service. Spring and summer discounts. Sentinel Building Systems, 800-327-0790, ext. 26. [www.sentinelbuildings.com](http://www.sentinelbuildings.com). Must Sell!! Steel Buildings! Ideal for all uses. Factory Direct. Huge Savings. 24x30, 40x60, 30x48, 50x72, 60x96, 70x84, 75x108, 80x128 and more. [www.DMACBuildings.com](http://www.DMACBuildings.com). 1-877-704-7283.