

# MAY IS BEEF MONTH



**Supporting the Beef Industry in Northwest Kansas**

Everything for your Summer Grilling Season

- Steaks •Pork •Chicken
- Brats •Sausage •Hamburger



## P&L MEAT MARKET

YOUR HOME TOWN MEAT MARKET

LESLIE K. DOGGETT - OWNER

413 E. Washington • St. Francis • 785-332-2236

Now Accepting  
VISA,  
MasterCard,  
Discover

*Salute To*  
**BEEF PRODUCERS**

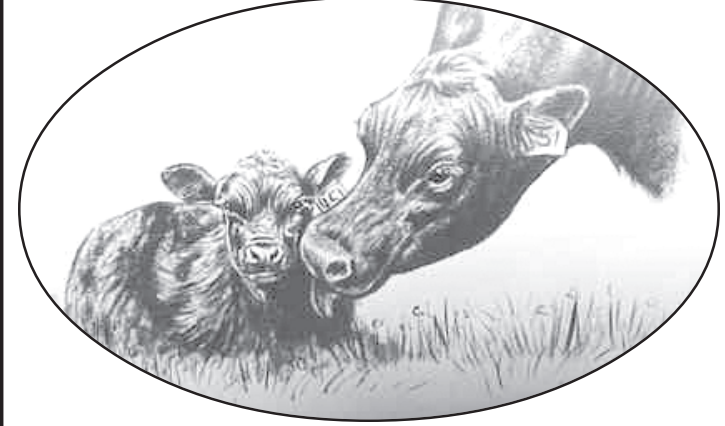
Licensed in Kansas, Colorado, and Nebraska for your Real Estate needs!

**Western** Auction & Real Estate, LLC

[www.westernauctionandrealestate.com](http://www.westernauctionandrealestate.com)

Skip Petersen, Sales Agent & Auctioneer ~ 785.332.2368  
Jeff Raile, Personal Property Auctioneer ~ 785.332.8951  
Robin A. Witzel, Assoc. Broker, Appraiser & Auctioneer ~ 785.332.5586  
Brett Petersen, Sales Agent & Auctioneer  
W. Hwy. 36 ~ P.O. Box 928  
St. Francis, Kansas 67756 ~ 785.332.8990  
Betty L. Petersen, Broker & Appraiser

Agricultural animals have always made a major contribution to the welfare of human societies by providing food, shelter, fuel, fertilizer and other products and services. They are a renewable resource, and utilize another renewable resource, plants, to produce these products and services. In addition, the manure produced by the animals helps improve soil fertility and, thus, aids the plants. In some developing countries the manure cannot be utilized as a fertilizer but is dried as a source of fuel.

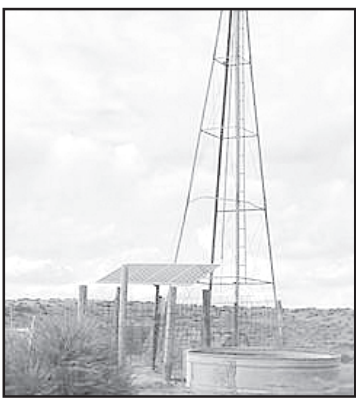


## The Saint Francis Herald

785-332-3162 ~ 310 W. Washington ~ St. Francis

*Bird City Times*

785-538-2289 ~ P.O. Box 220 ~ Bird City



## May is Beef Month

Check into a **SOLAR PUMP** to keep those cattle watered efficiently ...

Authorized Dealers for:



☐ We Offer Fiberglass Stock Tanks

☐ We'll Design your pump to fit your water needs

☐ Wells from 20 ft. to 500 ft. deep

☐ From 1 gpm to 20 gpm

## Ross Manufacturing

W. Hwy. 36 ~ St. Francis, KS

785-332-3387 • 785-332-3012 • (cell) 785-332-8560

## Salute to Beef Producers

Gelbvieh originated in Bavaia, in southern Germany. The breed was introduced into the United States by Carnation Genetics through the importations of semen from Germany, starting in July of 1971.

**WESTERN STATE BANK** FDIC

Troy Hilt  
Vice President  
LPO Manager

"Achieving goals by Building Relationships"

785-332-3100 [www.wsbs.com](http://www.wsbs.com)  
P.O. Box 1102 ~ 114 E. Washington ~ St. Francis

## There's more to our beef than award-winning taste.

**CALLICRATE BEEF**  
Celebrate goodness. Celebrate life.

☐ Voted "best reason for a burger" by the *Colorado Springs Independent*

**ALL NATURAL!**  
•No Hormones •No Antibiotics  
•No Animal By-Products  
are used during our feeding period.

[www.ranchfoodsdirect.com](http://www.ranchfoodsdirect.com)  
**Callicrate Feed Yard**  
PO Box 748 ~ St. Francis, KS 67756  
Phone 785-332-3344/Fax 785-332-3250  
[www.nobull.net](http://www.nobull.net)

**Our beef is better... Better for you.  
Better for ranchers. Better for the community.**

## BEEF

Keeping America Strong

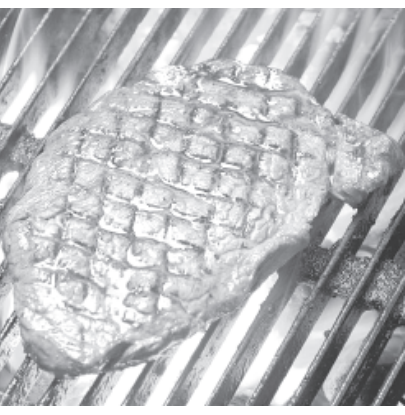
Hereford Cattle first came to the United States in 1817 when the great statesman Henry Clay of Kentucky made the first importation - a bull and two females. These cattle and their offspring attracted considerable attention, but they were eventually absorbed by the local cattle population and disappeared from permanent identity. The first breeding herd in America is considered to be one established in 1840 in Albany, New York.

**FIRST NATIONAL BANK** FDIC  
[www.fnb.com](http://www.fnb.com)

785-332-2100  
210 Bird Ave.  
BIRD CITY

785-332-2145  
201 W. Washington  
ST. FRANCIS

## MAY IS BEEF MONTH



Steak is the single most popular beef dish in-home, eaten more than once a month by the average person. Hamburger is the second most popular in-home item.

Proud to support our area **BEEF INDUSTRY**

**St. Francis SUPERS**  
120 E. Washington  
St. Francis  
785-332-2064  
*"Your neighborhood grocery store"*