

# Program designed to help ranchers make changes

**By Joan Gienger, District Conservationist**  
 Nine years of drought have taken their toll on the grasslands of Cheyenne County and the surrounding area. In many pastures, up to 50 percent of the grass plants have died out, leaving bare ground that provides a spot for weedy species to sprout and grow whenever rain showers grace the plains. Cattle numbers are down and, in some cases, whole herds have been sold. These are stressful times for ranchers. Difficult questions surface: Is the drought over? Will my grass recover to pre-drought conditions? How long will it take? When do I start rebuilding my herd? Should I rebuild my herd to pre-drought conditions? Can I afford to

keep my cow herd numbers down? How will these decisions affect my grass? My pocketbook?  
 For ranchers struggling with these questions, there is help through the Environmental Quality Incentives Program under the Grazing Land Health resource concern. The program is designed to help ranchers make long term management changes that will result in improved grasslands. Incentive payments are made for three years to help softened the blow of these changes; cost-share is available if structural practices (i.e. well, pipeline, cross-fence, etc.) are needed. Contracts last one year longer than the last paid practice, but usually are from four to five years.  
 In exchange for the incentive or

cost-share funds, the land owner agrees to three main things: (1) half of whatever grows in any one year is to remain on the grass plant (key specie) at the end of the growing season; (2) exclusion cages will be installed to help monitor this use; and (3) a level of rest (determined by the landowner) will be provided during the growing season.  
 Ranchers who are interested in this program should visit the conservation office located in the United States Department of Agriculture Service Center on West Highway 36 in Saint Francis. Deadline for consideration for the 2005 program year is January 21. An application and a self-assessment form are to be completed by this date, so early inquiries are recommended.

# Ewe replacement sign-up deadline set for January 13

Sign-up ends Jan. 13 for the \$18 million Ewe Lamb Replacement and Retention Payment Program, which pays producers to expand their ewe lamb breeding stock. Sign-up for the program began Oct. 25.

Sheep and lamb operations in the United States have experienced long-term poor market conditions, which has led to reduced incomes. Increased imports and extreme drought conditions in domestic sheep-producing areas have forced producers to decrease production and flock size.

The program aims to strengthen the lamb industry by boosting the purchasing power of producers, including their ability to invest in larger and genetically-improved breeding stocks.

Program payments are expected to begin by the end of January. Subject to the availability of funds, producers will receive \$18 for each qualifying ewe lamb retained or purchased for breeding purposes during a specified period. If the amount of approved applications exceeds available funding, the United States Department of Agriculture will uniformly apply a national factor to reduce payments to

producers.  
 An eligible producer must have purchased or retained ewe lambs for breeding purposes between Aug. 1, 2003, and July 31, 2004, and must have retained the qualifying ewe lambs in the herd for at least one complete offspring lambing cycle. The producer must not have received funds under the Department of Agriculture's Lamb Meat Adjustment Assistance Program for the same ewe lamb.  
 In addition, during at least part of the base period (Aug. 1, 2003, to July 31, 2004), qualifying female ewe lambs must not have been older than 18 months and must not have pro-

duced an offspring. Other conditions apply as provided for in the program regulations and applications.

Producers must apply for the program by completing form FSA-384, "Ewe Lamb Replacement/Retention Payment Program Application." This form is available at the Cheyenne County Farm Service Agency office at West Highway 36 or on the Department of Agriculture's Web site at: <http://forms.sc.egov.usda.gov/eforms/mainservlet>.

More information on the program is available at the Farm Service Agency office and on Farm Service Agency's Web site at: [www.fsa.usda.gov](http://www.fsa.usda.gov).

## South of McDonald

**By Sandy Binning**

Sunday evening and supper guests of Lynn and Rita Officer were John and Linda Allacher, Jim and Lois Morelock and Albert and Annie Antholz.

Josh Johnson attended the Cheylin FFA National "Western Stock Show and ski trip Jan. 8-9.

Kathy Banister attended the Cheylin basketball games in

McDonald Friday evening. David Banister attended the Cheylin FFA ski trip Saturday and Sunday.

Friday evening Jim and Cheryl Banister were guests of Gladys Sramek to help Ty Carmichael celebrate his ninth birthday. Additional guests for cake and ice cream were Wade and Tami Carmichael, Teryn and friends. They all went bowling afterward.



**Mick Cox**  
 Performance-Tested/Carcass-Evaluated  
**PRODUCTION SALE**

**JANUARY 21, 2005 • 1 P.M.**

Tri-State Livestock Auction, McCook, Nebraska

**500 Angus Sell**

90 Power-Packed, Performance-Tested, Carcass Evaluated Bulls  
 300 Fancy, Bred, One Iron Angus Heifers  
 100+ Fancy, One-Iron Angus Replacement Heifers



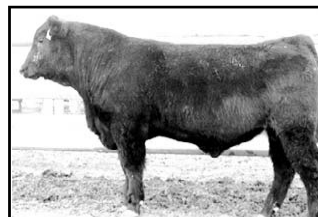
**MILL BAR DATELINE 3860**  
 Sire: Vermillion Dateline 7078 Dam's Sire: EXT

**LOT 25**  
 205 DAY WT. 766  
 RATIO 100 ET  
 EPD's:  
 BW +4.8  
 WW +56  
 Milk +16  
 YW +99



**MILL BAR ALLIANCE 3810**  
 Sire: Sitz Alliance 6595  
 Dam's Sire: GAR Sleep Easy 1009

**LOT 4**  
 205 DAY WT. 727  
 RATIO 112  
 EPD's:  
 BW +2.1  
 WW +42  
 Milk +29  
 YW +73



**MILL BAR FORECAST 3816**  
 Sire: Connealy Forecast  
 Dam's Sire: New Design 878

**LOT 7**  
 205 DAY WT. 766  
 RATIO 106  
 EPD's:  
 BW +2.1  
 WW +51  
 Milk +25  
 YW +85

- 90 Power-Packed, Performance-Tested, Carcass Evaluated Bulls  
 > Sons of Alliance, Hyline Right Time 338, Mill Bar Powerhouse VRD 2676, Connealy Forecast, VRD and Leachman Boomtime. Big, stout, January and February yearlings. Mill Bar will keep and feed your bulls until April 1, 2005 at no charge and deliver to adjoining states after having them fertility tested in March. First breeding season guarantee.
- 300 Fancy, Bred, One Iron Angus Heifers - Absolutely the best to sell in Nebraska this year.  
 > AI synchronized and ultrasounded to Bon View New Design 878 and Mill Bar Next Design 2604. Due to start calving February 10. These heifers will weigh 1050 - 1150# by sale day. Strictly top shelf genetics from Mill Bar Angus bull customers.
- 100+ One Iron Angus Replacement Heifers  
 > Superior individuals, several A.I. sired, they will sell in sire groups to suit the buyer, including daughters of Mill Bar Next Design 2604, Alliance and Hyline Right Time 338. These heifers will weigh 700 - 750# by sale day. These will be the fanciest heifers to sell in the west this year.

Featuring Sons of:

Alliance, Hyline Right Time 338, Mill Bar Powerhouse VRD 2676, Connealy Forecast, VRD, and Leachman Boomtime.



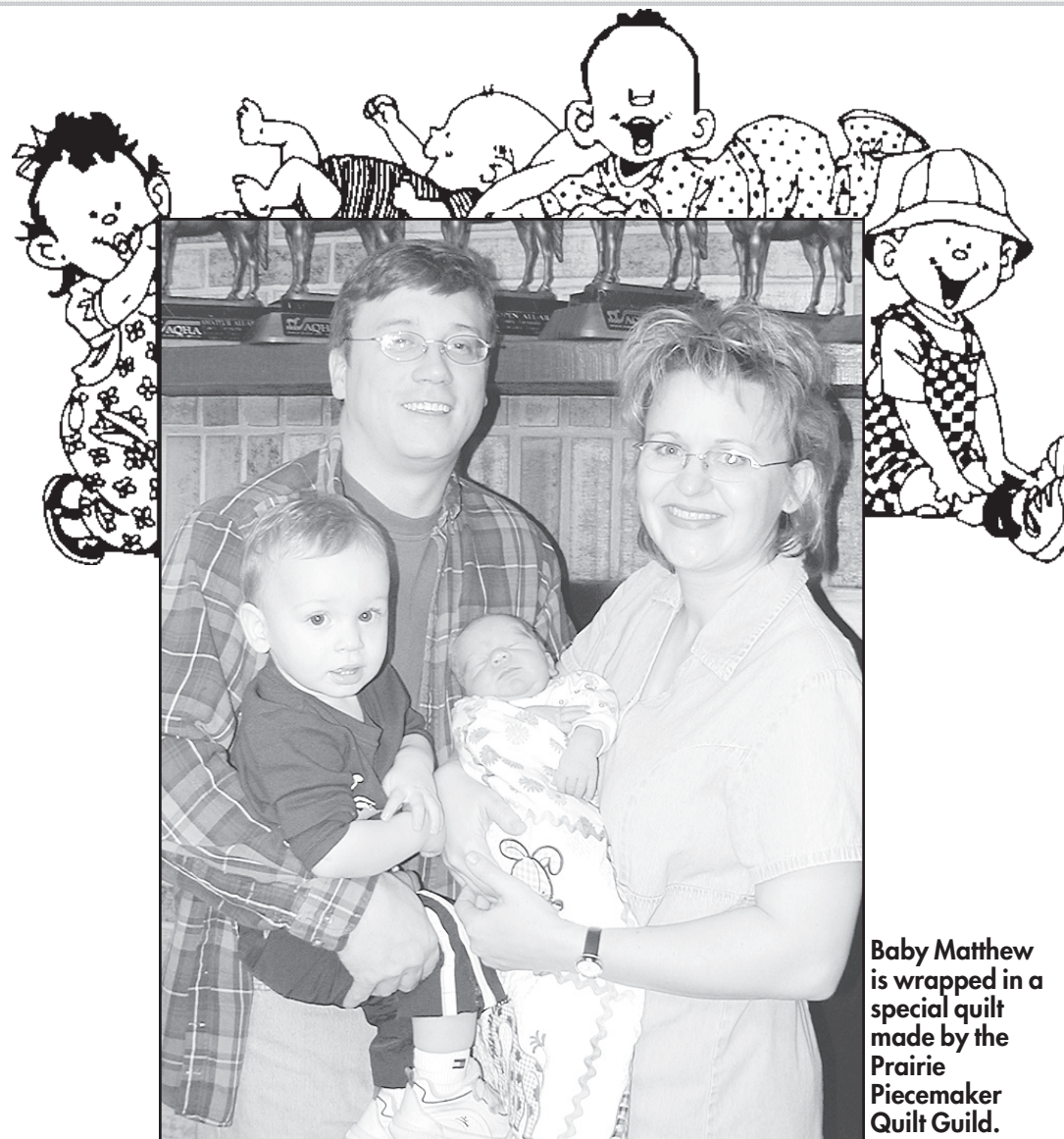
View our catalog online @  
[www.millbarangus.com](http://www.millbarangus.com)

**Mick Cox**  
 73787 Ave. 357  
 Hayes Center, NE 69032  
 308/286-3416  
[millbarangus@hotmail.com](mailto:millbarangus@hotmail.com)

**SPECIAL NOTE:** The Mill Bar commercial herd has continually produced large numbers of home-raised steers that have consistently achieved a 50% acceptance rate for Certified Angus Beef while grading 92% USDA Choice and Prime.

# Matthew Ellis Berens

Matthew made his first appearance on Wednesday, January 5th at the Goodland Regional Medical Center. Matthew weighed 7 lbs. 11 oz. Congratulations to his parents Kevin and Angie; and big brother Joshua



Baby Matthew is wrapped in a special quilt made by the Prairie Piecemaker Quilt Guild.

## Baby Photo Album



114 W. Washington • St. Francis  
 785-332-2833

## 2 Bottles of Champagne Burr Retail Liquor

Hwy. 36 • St. Francis  
 785-332-3172

Spinal Adjustment for Mommy & Baby plus a tube of Biofreeze

## POLING

Chiropractic & Family Health Center

709 S. Benton ~ St. Francis  
 785-332-3105

## FREE Full Car Wash! St. Francis Equity

105 S. River • St. Francis, KS  
 785-332-2421

## \$50 Savings Bond BANKWEST OF KANSAS



121 Washington • St. Francis • 785-332-3333  
 Colby Other Locations FDIC  
 LENDER Goodland Idalia, CO

## Baby Gift OWENS True Value

Help Is Just Around The Corner.

113 E. Washington • St. Francis  
 785-332-2411

## Baby Basket Krien Pharmacy

105 W. Washington ~ St. Francis  
 785-332-2177

## \$50 Savings Bond

"Where The Employees Are The Owners"  
  
 FIRST NATIONAL BANK  
[www.fnb.com](http://www.fnb.com)  
 Bird City, Colby, Goodland, Kirk, Oberlin, Quinter, Sharon Springs & ST. FRANCIS

## \$50 Gift Certificate

St. Francis  
**SUPERS**  
 120 E. Washington • St. Francis  
 785-332-2064

## FREE Subscription to the:

The Saint Francis Herald or The Bird City Times  
 310 W. Washington • St. Francis  
 785-332-3162